



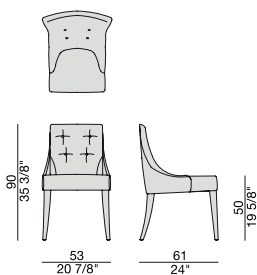
Sedia con struttura in massello di noce canaletta o frassino e rivestimento nei tessuti della collezione.

Chair with frame in solid canaletta walnut or ash and cover in the fabrics of the collection.

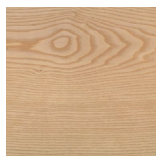
Stuhl mit Gestell aus massivem Nussbaum Canaletta oder Esche und Bezug in den Stoffen der Kollektion.

Chaise avec structure en noyer canaletta ou frêne massif et revêtement dans les tissus de la collection.

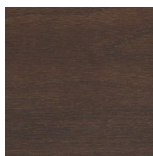
Silla con estructura en nogal canaletta o fresno macizo y revestimiento en las telas de la colección.



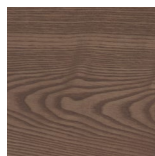
Essenze | Wood



FRASSINO NATURALE
Natural Ash



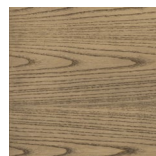
FRASSINO
Ash
tinto/stained moka



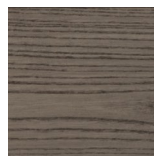
FRASSINO
Ash
tinto/stained canaletta walnut



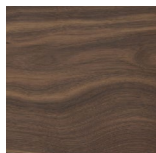
FRASSINO
Ash
tinto/stained wengé



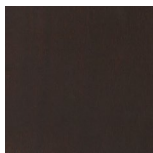
FRASSINO
Ash
tinto/stained canapa



FRASSINO
Ash
tinto/stained caffè



NOCE CANALETTA
Canaletta Walnut

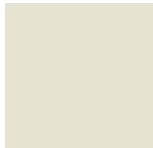


NOCE CANALETTA
Canaletta Walnut
tinto/stained moka

Laccato opaco poro aperto/chiuso | Matt Lacquered open/closed pore



BLANCO
White
(RAL 9016)



AVORIO
Ivory
(RAL 1013)



ARGILLA
Argilla
(RAL 7006)



PIOMBO
Piombo
(NCS S5005G20Y)



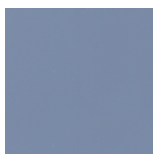
NERO
Black
(RAL 9005)



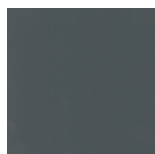
GRANATA
Granata
(NCS S4050Y90R)



PISTACCHIO
Pistacchio
(PANTONE 5825)



AVIO
Avio
(PANTONE 5415)



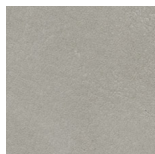
IRON
Iron
(RAL 7011)



CIOCCOLATO
Chocolate
(RAL 8019)

Pelle | Leather

Cat. LUX



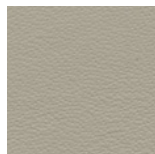
Nabuk

Cat. PLUS



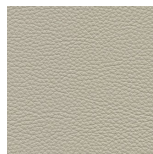
Pelle PLUS

Cat. EXTRA



Pelle EXTRA

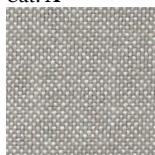
Cat. PELLE



Pelle

Rivestimento | Cover

Cat. A

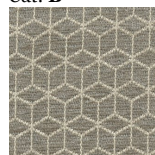


Hallindal 65



Hound

Cat. B



Rabat



Milord

Cat. C



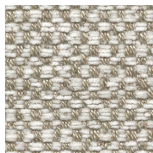
Armam



Fashion



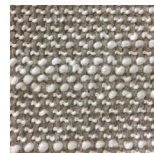
Flax



Ikat



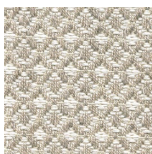
Loom



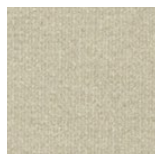
Madras



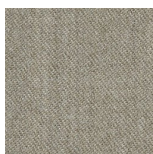
Moran



Thalys

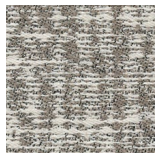


Velvet

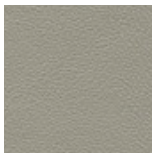


Wool

Cat. D



Astra



Ecopelle



Range



Tress

Cat. E



Cotone



Dorian



In Bianco/Calico

Cat. COM

Disponibile con tessuto fornito dal cliente.

Available with fabric supplied by the customer.

Verfügbar mit Kundenstoff.

Disponible avec tissu du client.

Disponible con tela suministrada por el cliente.