



MERONI & COLZANI
M I L A N O

CORSOCOMO armchair

MC Lab



DESCRIPTION

Modernity conceived in an essence. The most sophisticated. Corsocomo is a armchair with clear-cut lines, bearer of a fresh mood capable of expressing an essential image. Its details - such as the visible stitching and the solid wood legs - are extremely refined. Available also with saddle back

TECHNICAL INFORMATION

Typology

Armchair

Structure and padding

Wood covered in differential density polyurethane with dacron layers and fine velvet in nylon fibre.
Seat cushion in 100% goose down with insert in differential-density polyurethane.
Back cushions in 100% goose down.

Base

Metal in MC chrome finish | wheels for version with saddle back

Cover

Completely removable cover in fabric, not removable cover structure in leather.

Stitch

stitch, colors of sample book.

Back

Saddle for versione with saddle back

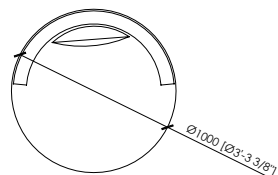
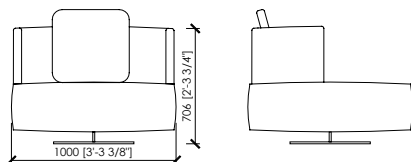


MERONI & COLZANI
M I L A N O

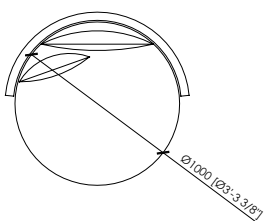
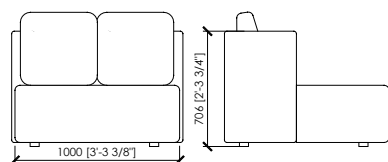
CORSOCOMO armchair

MC Lab

POLTRONA GIREVOLE DIAM.100
SWIVELLING ARMCHAIR DIA. 100



POLTRONA GIREVOLE SCHIENALE CUIO DIAM.100
SWIVELLING ARMCHAIR SADDLE BACK DIA 100



POLTRONA GIREVOLE SCHIENALE CUIO DIAM.130
SWIVELLING ARMCHAIR SADDLE BACK DIA 130

