



MERONI & COLZANI
M I L A N O

LAGUNA

MC Lab



DESCRIPTION

Extremely versatile modular system that allows the configuration of furnishing solutions for various rooms from the living area to the home-office or the sleeping area. The aesthetic originality of Laguna, minimal but rich in refined details and precious finishes, interprets the functional needs of the contemporary home with great personality. Its modules are totally customizable: from the type of containers to the choice of the doors in glass or wood, passing through that of the finishes of the MC collection.

TECHNICAL INFORMATION

Typology

Modular system

External structure

MDF panel lacquered | canaletto walnut veneered | ash veneered

Internal structure

Blockboard panel ash veneered

Doors

MDF panel lacquered | canaletto walnut veneered | ash veneered | painted metal for glass door

Handle (plain door)

Metal in MC chrome finish | Painted metal in grey, champagne, satin brass dark and light, black finish

Shelves

Smocked glass

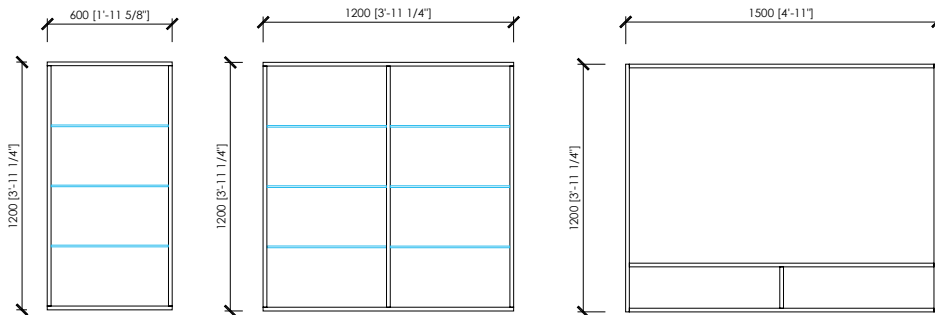
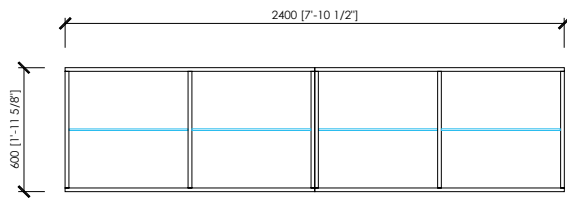
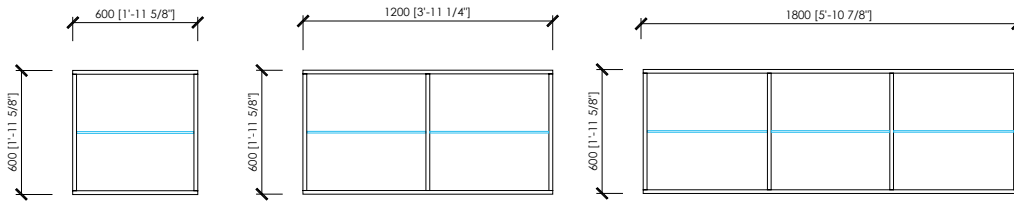


MERONI & COLZANI
M I L A N O

LAGUNA

MC Lab

elementi a giorno | open units





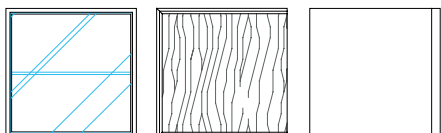
MERONI & COLZANI
M I L A N O

LAGUNA

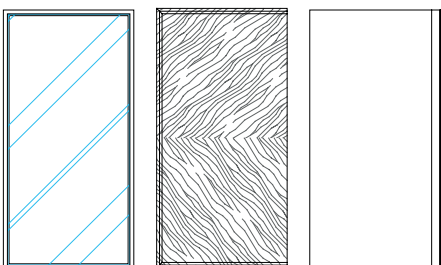
MC Lab

OPEN UNIT

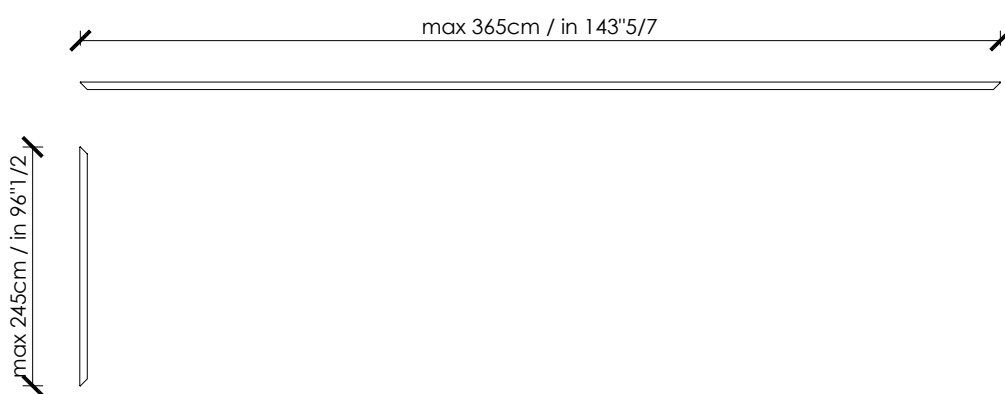
ante per elementi a giorno h 60cm | doors for open units h 60cm - in 1'-11 5/8"



ante per elementi a giorno h 120cm | doors for open units h 120cm - in 3'-11 1/4"



struttura esterna | external structure





MERONI & COLZANI
MILANO

LAGUNA

MC Lab

WOODEN DOORS

composizioni | compositions

