



MERONI & COLZANI
M I L A N O

PANTHEON

Maurizio Di Mauro architetto



DESCRIPTION

Pantheon is a wardrobe defined by the particular processing of its doors, plus their material play with the structure wooden essence and the doors frame. Its compositional versatility allows it to be placed in any ambience, always offering the maximum capacity. A modular system with a strong visual impact - designed to be assembled by your imagination and needs: its modules can be customized with different sizes and configurations. Shelves, drawers and accessories are available in aluminum with leather details.

TECHNICAL INFORMATION

Typology

Wardrobe system

Opening

Leaf door

Inside structure

Honeycomb panel veneered with canaletto walnut or ash open-pore

Base and top

Blockboard panel veneered with canaletto walnut or ash open-pore

Doors

Varnished frame | Glass

NOTES

Integrated handle | Back available in mirror | Inside accessories: drawers, trousers rack, shelves, light shelves, jewellery cases, hanger and reach hook hanger

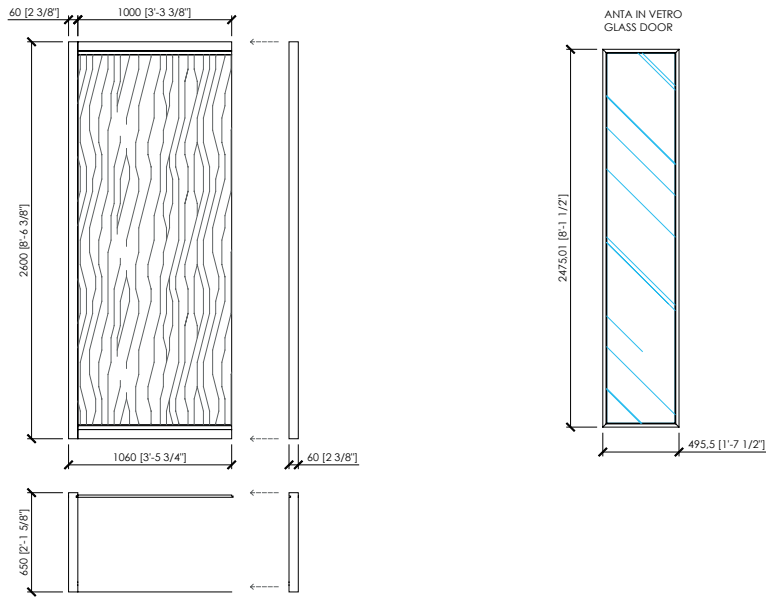


MERONI & COLZANI
MILANO

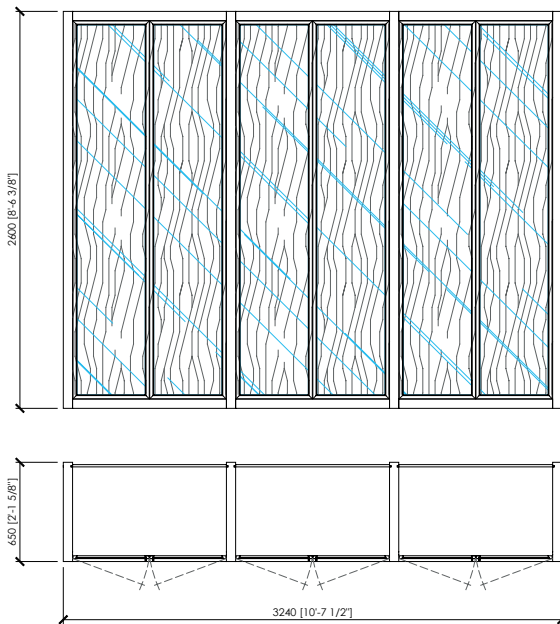
PANTHEON

Maurizio Di Mauro architetto

MODULO CON SPALLA DA CM 6
ELEMENT WITH CM 6 | IN 2"1/3 SHOULDER



ESEMPIO DI MODULARITA'
MODULARITY EXAMPLE



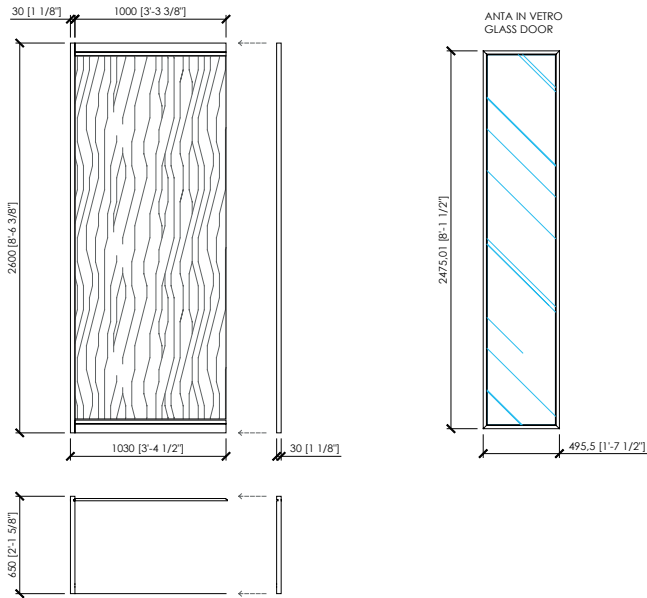


MERONI & COLZANI
M I L A N O

PANTHEON

Maurizio Di Mauro architetto

MODULO CON SPALLA DA CM.3
ELEMENT WITH CM.3 | IN 1"1/8 SHOULDER



ESEMPIO DI MODULARITA'
MODULARITY EXAMPLE

