

AA1

ALVAR AALTO



Historical product of 1932.

Alvar Aalto's **sofa bed** is a mostly unknown part in the biography of the Finnish master. Towards the end of the 1920's Aalto adhered to the Germanic-influenced Functionalist Movement and in 1929 took part in the CIAM congress about the "Existenzminimum" at Frankfurt where he got in contact with Gropius, Moholy-Nagy and Giedion. It was also Siegfried Giedion who called on him for a collection he realized for Wohnbedarf and then put in production a chair as well as the adjustable sofa bed which, in fact, reflects perfectly the principles of economy, simplicity of use and "lightness" in the figurative sense recommended at Frankfurt. The sofa, slightly modified on Giedion's advice, was presented at Stockholm in 1932 and on the occasion of the Universal Exposition at Brussels in 1935.

TYPE / SOFAS

TECHNICAL DESCRIPTION

Sofabed, numbered piece.

Structure in tubular chromed steel, armrests in solid wood black lacquer.

Inclination of seat and back are adjustable, up to 180° to become a bed.

Removable cover in fabric or leather.

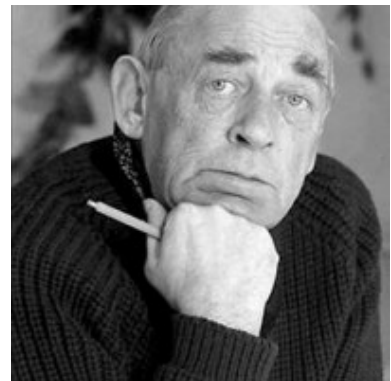
MisuraEmme®



DESIGNER

ALVAR AALTO

From 1927 to 1935 **Alvar Aalto** worked on two buildings which were to become the masterpieces of his juvenile period and contribute to his fame on an international level: the Municipal Library of Viipuri and the Paimio Sanatorium. In these constructions of rationalistic imprint, Aalto succeeded in introducing the defining character of organic architecture as exemplified in the use of form and material which eventually led to a new understanding of architecture. Based on the experience with the furniture designed for these two buildings, Aalto together with both his wife Aino and Maire Gullichsen, founded the Artek trademark in 1935 that specialized in the production of warped wood furniture achieved through new techniques developed by Aalto. From this point on, his biography is rich with events and success, ranging from the design of a simple sauna stool in birch to urbanistic projects such as the SÄYNÄTSALO Island and the reconstruction plans for Rovaniemi. He was also responsible for numerous projects abroad, including the M.I.T. dormitory in Cambridge, MA (USA) and the Riola Church near Bologna, Italy. Outside his homeland, however, the organic approach to architecture was intended as a pure relationship between man-made projects and nature. Alvar Aalto died in 1976 at the age of 78.



MisuraEmme®

COVER FINISHINGS

FABRICS



A_AS1 Saari



A_AS2 Saari



A_AS4 Saari



A_AS5 Saari



A_AS7 Saari



B_CAE Cocò



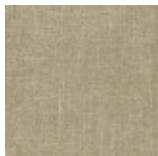
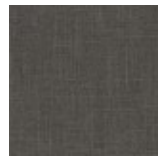
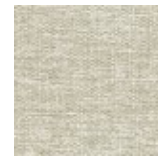
B_CAM Cocò



B_CAK Cocò



B_CAF Cocò

B_BC1
BuranaB_BC3
BuranaB_BC4
BuranaB_BC6
Burana

C_C10 Star



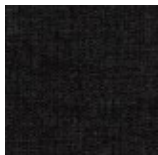
C_C11 Star



C_C17 Star



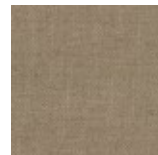
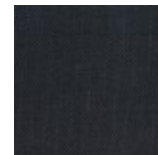
C_C16 Star



C_C18 Star



C_C15 Star

D_D91
PanamaD_D92
PanamaD_D93
PanamaD_D94
PanamaD_D95
PanamaD_D98
Panama

D_i71 Clou



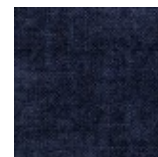
D_i74 Clou



D_i79 Clou



D_i72 Clou



D_i78 Clou

D_D01
UbyeD_D03
Ubye

MisuraEmme®



D_D05
Ubaye



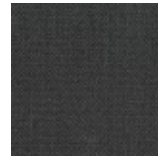
E_E20 Mood



E_E25 Mood



E_E22 Mood



E_E26 Mood



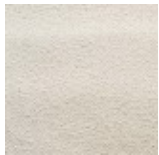
E_E27 Mood



E_E21 Mood



E_E28 Mood



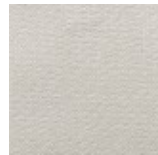
E_E51 Lido



E_E52 Lido



E_E54 Lido



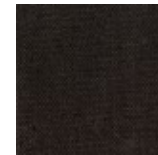
F_E50 Luxus



F_F01 Luxus



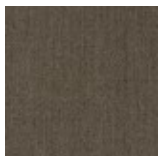
F_F02 Luxus



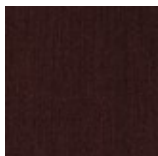
F_F03 Luxus



F_F05 Luxus



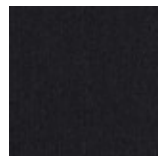
F_F11 Lama



F_F14 Lama



F_F12 Lama



F_F15 Lama



F_F25
Gaucho



F_F21
Gaucho



F_F23
Gaucho



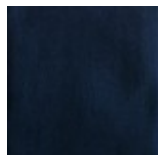
F_F24
Gaucho



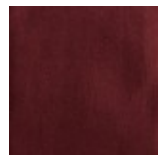
F_F33 Velvet



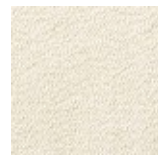
F_F35 Velvet



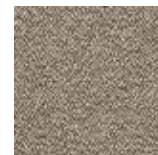
F_F32 Velvet



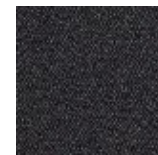
F_EM5
Velvet



H_H42 Sera



H_H44 Sera



H_H47 Sera



H_H48 Sera



H_H50
Opera

H_H53
Opera

H_H55
Opera

H_H56
Opera

SMOOTH LEATHERS



H30 Gesso

H38 Sand

H36
Camoscio

H32 Acacia

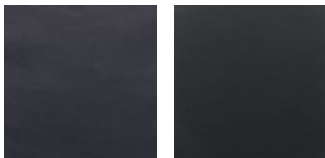
H31
Naturale

H37
Marmotta

H71 Testa di
Moro



H35 Grigio
Chiaro



H40 Blu
Notte

H73 Nero

NUBUCK



HN2
Carbone

HN3 Grigio

SMOOTH ECO-LEATHERS



C_CE1

C_CD3

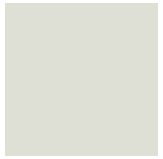
C_CF6

C_CD1

C_CD4

C_CD5

EMBOSSSED ECO-LEATHERS



C_CE3



C_CE5



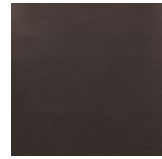
C_CL1



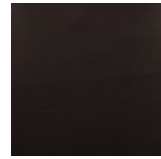
C_CL3



C_CL7



C_CL8



C_CL6

STRUCTURE FINISHINGS

METALS



501 Cromo
naturale

DIMENSIONS

Sofa bed

