

ANTIBES

FERRUCCIO LAVIANI



The **Antibes** sofa combines subtlety with lightness. The wooden base, tapered feet and fabric upholstery come together to create an inviting, whispered aesthetic, where sophisticated craftsmanship and stunning design strike a perfect balance.

TYPE / SOFAS

TECHNICAL DESCRIPTION

Antibes is a sofa system available in a fixed and modular version.

It includes 3 fixed sofas, with 6 terminal and corner units and 1 chaise longue unit to form many different linear or corner compositions.

Sofa base in solid wood in oak stained, structure in wood and multilayer board with elastic belts covered with polyurethane foam, dacron fibre and light velvet.

Cushions in polyurethane foam with different densities and feather inlay, cushions with removable covers.

Structure in fabric that can be removed after the wooden base is taken off, structure in leather is not removable. Upholstered fabric or leather.

MisuraEmme[®]



DESIGNER

FERRUCCIO LAVIANI

Born in Cremona in 1960 Laviani attends the Istituto Professionale Internazionale per l'Artigianato Liutario e del Legno di Cremona, receiving his degree in 1978. He later attends the Faculty of Architecture, at the Politecnico di Milano where he graduates in 1986, while attending at the same time the Scuola Politecnica di Design in Milan from 1982 to 1984. In 1983 he starts working for Michele De Lucchi; he becomes a partner in 1986 and works there until 1991, when he decides to open his own studio in Milan. Laviani's work mainly focuses on product design, interior design, art direction and graphic. Since 1991, he is the Art Director for Kartell; same role he has played for other companies. He designs retail spaces and set-ups, offices and houses for private clients, as well as for furniture and fashion. In 2008 an exhibition was dedicated to the lamps he designed for Kartell. Bourgie and Take lamps for Kartell are part of the permanent Collection of IMA, *Indianapolis Museum of Art (USA)*; also other products have been featured in museums and shows all over the world. In 2015, Laviani develops the new concept for Kartell Museum in Noviglio, updating the interior design he had conceived in 1999, when he received the award Premio Guggenheim Impresa & Cultura 2000, as the best museum of a company. Last year, he has started a collaboration with the Italian mosaic brand Bisazza. In 2016 Ferruccio has designed the pop-up store for the fashion designer Paula Cademartori and the set-up for the Haute Couture Women show for Dolce e Gabbana, at Laboratori Ansaldo, Teatro alla Scala, Milan.

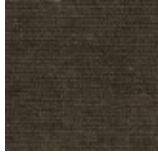


COVER FINISHINGS

FABRICS



A_AS1 Saari



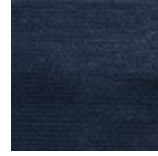
A_AS2 Saari



A_AS4 Saari



A_AS5 Saari



A_AS7 Saari



B_CAE Cocò



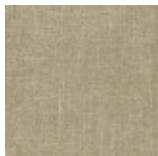
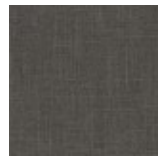
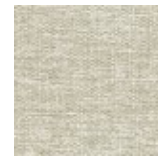
B_CAM Cocò



B_CAK Cocò



B_CAF Cocò

B_BC1
BuranaB_BC3
BuranaB_BC4
BuranaB_BC6
Burana

C_C10 Star



C_C11 Star



C_C17 Star



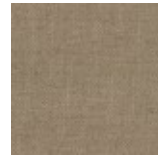
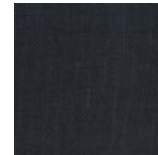
C_C16 Star



C_C18 Star



C_C15 Star

D_D91
PanamaD_D92
PanamaD_D93
PanamaD_D94
PanamaD_D95
PanamaD_D98
Panama

D_i71 Clou



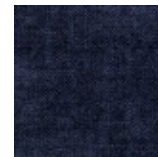
D_i74 Clou



D_i79 Clou



D_i72 Clou



D_i78 Clou

D_D01
UbayeD_D03
Ubaye

MisuraEmme®



D_D05
Ubaye



E_E20 Mood



E_E25 Mood



E_E22 Mood



E_E26 Mood



E_E27 Mood



E_E21 Mood



E_E28 Mood



E_E51 Lido



E_E52 Lido



E_E54 Lido



F_E50 Luxus



F_F01 Luxus



F_F02 Luxus



F_F03 Luxus



F_F05 Luxus



F_F11 Lama



F_F14 Lama



F_F12 Lama



F_F15 Lama



F_F25
Gaucho



F_F21
Gaucho



F_F23
Gaucho



F_F24
Gaucho



F_F33 Velvet



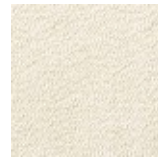
F_F35 Velvet



F_F32 Velvet



F_EM5
Velvet



H_H42 Sera



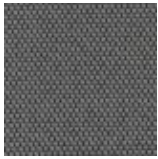
H_H44 Sera



H_H47 Sera



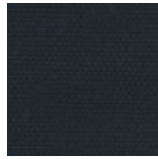
H_H48 Sera



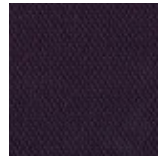
H_H50
Opera



H_H53
Opera



H_H55
Opera



H_H56
Opera

SMOOTH LEATHERS



H30 Gesso



H38 Sand



H36
Camoscio



H32 Acacia



H31
Naturale



H37
Marmotta



H71 Testa di
Moro



H35 Grigio
Chiaro

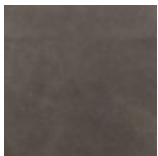


H40 Blu
Notte

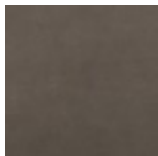


H73 Nero

NUBUCK

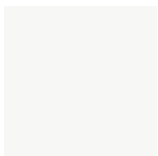


HN2
Carbone



HN3 Grigio

SMOOTH ECO-LEATHERS



C_CE1



C_CD3



C_CF6



C_CD1

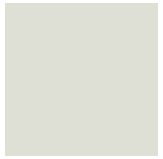


C_CD4



C_CD5

EMBOSSSED ECO-LEATHERS



C_CE3



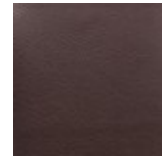
C_CE5



C_CL1



C_CL3



C_CL7



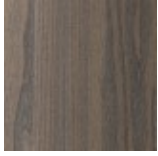
C_CL8



C_CL6

BASE FINISHINGS

MATT VENEERS



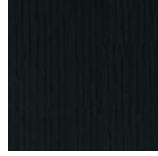
53 Olmo
grey



50 Rovere
cenere



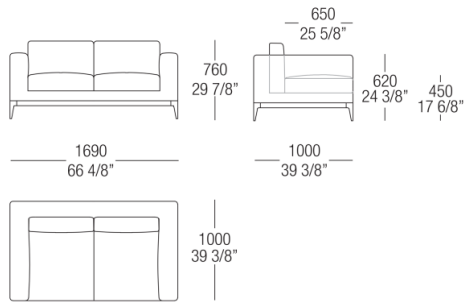
52 Rovere
fumé



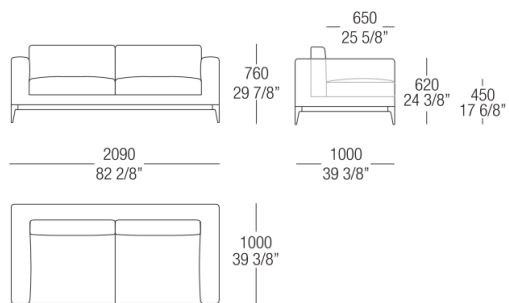
51 Oak Black

DIMENSIONS

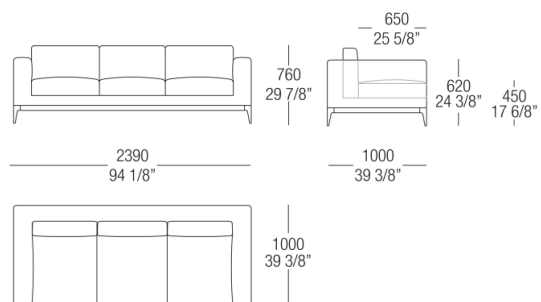
Fixed sofa



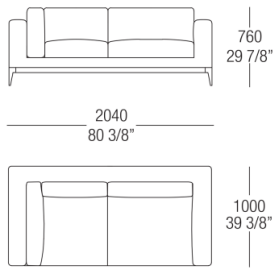
Fixed sofa



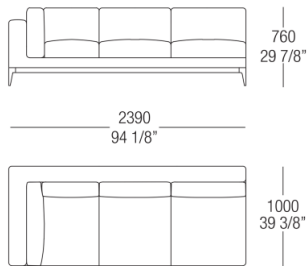
Fixed sofa



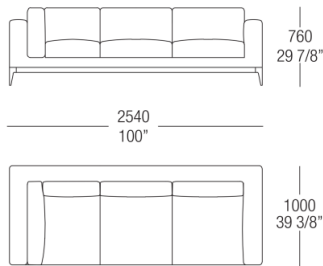
Corner element



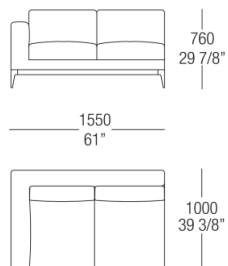
Corner element



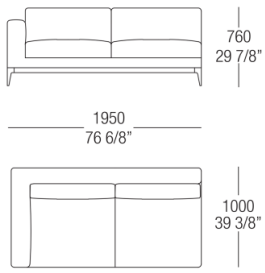
Corner element



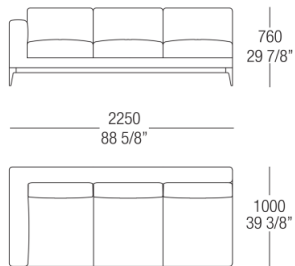
Terminal element



Terminal element



Terminal element



Chaise longue

