

BRITISH

FERRUCCIO LAVIANI



The eye-catching **British** sofa is the ideal choice for both classic and modern spaces. Soft cushions in expanded polyurethane sit atop a seat pad in down and jersey, with the sofa's style capable of holding its own against our contemporary lifestyles.

TYPE / SOFAS

TECHNICAL DESCRIPTION

Collection consisting of sofas in three different widths: 1900/2300/2700mm. (74 6/8" - 90 4/8" - 106 2/8" inch).

Structure in wood with belts on the seats and armrests and backrests in wooden hollow frame.

Padding: back filled with shaped polyurethane foam covered with knit fibre.

Cushions: seats filled with polyurethane foam covered in knit fibre.

Backrests in polyurethane foam covered with fibre with polyester jersey.

Covers of cushions, seat and backrest can be removed. Cover of the structure removable by expert personnel.

Feet in brass varnished gun metal.

MisuraEmme®



DESIGNER

FERRUCCIO LAVIANI

Born in Cremona in 1960 Laviani attends the Istituto Professionale Internazionale per l'Artigianato Liutario e del Legno di Cremona, receiving his degree in 1978. He later attends the Faculty of Architecture, at the Politecnico di Milano where he graduates in 1986, while attending at the same time the Scuola Politecnica di Design in Milan from 1982 to 1984. In 1983 he starts working for Michele De Lucchi; he becomes a partner in 1986 and works there until 1991, when he decides to open his own studio in Milan.

Laviani's work mainly focuses on product design, interior design, art direction and graphic. Since 1991, he is the Art Director for Kartell; same role he has played for other companies. He designs retail spaces and set-ups, offices and houses for private clients, as well as for furniture and fashion. In 2008 an exhibition was dedicated to the lamps he designed for Kartell. Bourgie and Take lamps for Kartell are part of the permanent Collection of IMA, *Indianapolis Museum of Art (USA)*; also other products have been featured in museums and shows all over the world. In 2015, Laviani develops the new concept for Kartell Museum in Noviglio, updating the interior design he had conceived in 1999, when he received the award Premio Guggenheim Impresa & Cultura 2000, as the best museum of a company. Last year, he has started a collaboration with the Italian mosaic brand Bisazza. In 2016 Ferruccio has designed the pop-up store for the fashion designer Paula Cademartori and the set-up for the Haute Couture Women show for Dolce e Gabbana, at Laboratori Ansaldo, Teatro alla Scala, Milan.



COVER FINISHINGS

FABRICS



A_AS1 Saari



A_AS2 Saari



A_AS4 Saari



A_AS5 Saari



A_AS7 Saari



B_CAE Cocò



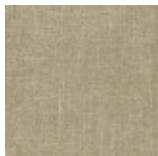
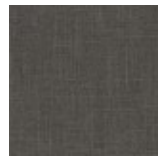
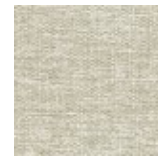
B_CAM Cocò



B_CAK Cocò



B_CAF Cocò

B_BC1
BuranaB_BC3
BuranaB_BC4
BuranaB_BC6
Burana

C_C10 Star



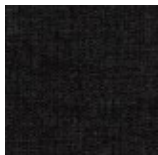
C_C11 Star



C_C17 Star



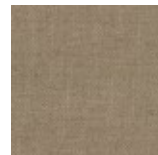
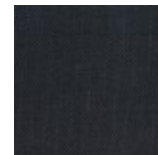
C_C16 Star



C_C18 Star



C_C15 Star

D_D91
PanamaD_D92
PanamaD_D93
PanamaD_D94
PanamaD_D95
PanamaD_D98
Panama

D_i71 Clou



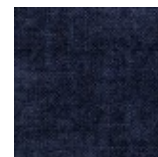
D_i74 Clou



D_i79 Clou



D_i72 Clou



D_i78 Clou

D_D01
UbyeD_D03
Ubye

MisuraEmme®



D_D05
Ubaye



E_E20 Mood



E_E25 Mood



E_E22 Mood



E_E26 Mood



E_E27 Mood



E_E21 Mood



E_E28 Mood



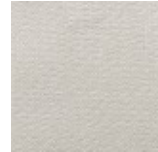
E_E51 Lido



E_E52 Lido



E_E54 Lido



F_E50 Luxus



F_F01 Luxus



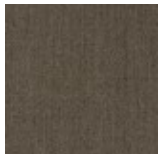
F_F02 Luxus



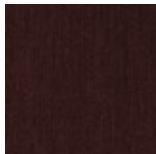
F_F03 Luxus



F_F05 Luxus



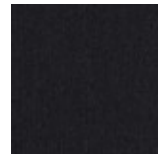
F_F11 Lama



F_F14 Lama



F_F12 Lama



F_F15 Lama



F_F25
Gaucho



F_F21
Gaucho



F_F23
Gaucho



F_F24
Gaucho



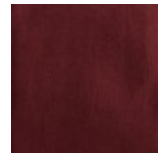
F_F33 Velvet



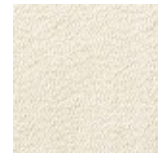
F_F35 Velvet



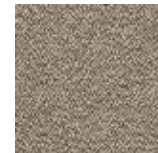
F_F32 Velvet



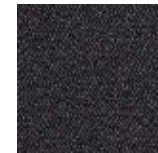
F_EM5
Velvet



H_H42 Sera



H_H44 Sera



H_H47 Sera



H_H48 Sera



H_H50
Opera

H_H53
Opera

H_H55
Opera

H_H56
Opera

SMOOTH LEATHERS



H30 Gesso

H38 Sand

H36
Camoscio

H32 Acacia

H31
Naturale

H37
Marmotta

H71 Testa di
Moro



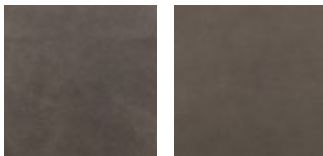
H35 Grigio
Chiaro



H40 Blu
Notte

H73 Nero

NUBUCK



HN2
Carbone

HN3 Grigio

SMOOTH ECO-LEATHERS



C_CE1

C_CD3

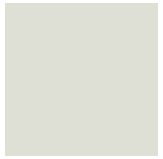
C_CF6

C_CD1

C_CD4

C_CD5

EMBOSSSED ECO-LEATHERS



C_CE3



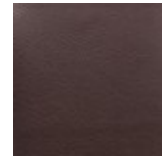
C_CE5



C_CL1



C_CL3



C_CL7



C_CL8



C_CL6

FEET FINISHINGS

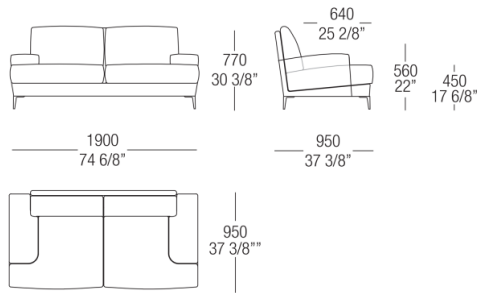
METALS



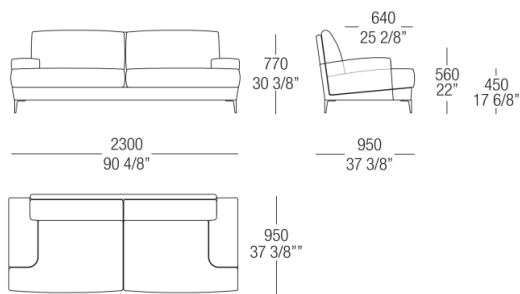
524
Verniciato
Canna di
fucile

DIMENSIONS

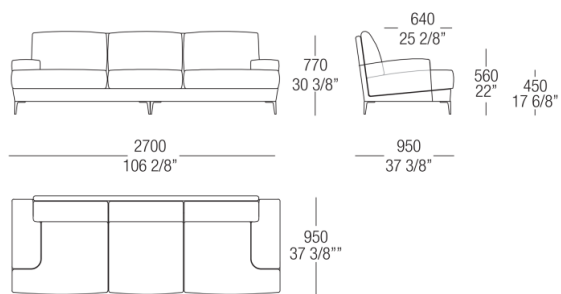
Linear sofa - 2 seaters



Linear sofa - 2 maxi seaters



Linear sofa - 3 seaters



MisuraEmme®