

# КАННЫ

ФЕРРУЧЧО ЛАВИАНИ



**Канны** диван больше похож на набор различных элементов, которые могут быть подключены, чтобы создать в целом. Эти отдельно стоящие детали можно смешивать и подбирать по вкусу каждого владельца, гарантируя, что ни одно из двух решений не будет одинаковым. Стиль и практичность являются лозунгами этого современного дивана.

## ТИП / ДИВАНЫ

### ТЕХНИЧЕСКОЕ ОПИСАНИЕ

*Cannes - это система диванов, доступная в фиксированной и модульной версии, которая предлагает множество различных возможностей композиций. Он состоит из 9 базовых блоков, которые можно комбинировать для формирования линейных и угловых композиций.*

***Конструкция** из дерева с эластичными ремнями, покрытая пенополиуретаном различной плотности и перьевым вкладышем на спинку и подушки сидений. Все металлические детали из сатинированного никеля. Доступен с или без боковых декоративных кронштейнов.*

***Покрывтия** доступны из ткани или кожи. Тканевые чехлы могут быть сняты квалифицированным персоналом после разборки спинки, кожаная обивка не снимается.*

***Верхняя часть лотка** матовая, лакированная, W 380 D 1070 мм (W 15 "D 42 1/8").*

**MisuraEmme®**



## ДИЗАЙНЕР

### ФЕРРУЧЧО ЛАВИАНИ

Born in Cremona in 1960 Laviani attends the Istituto Professionale Internazionale per l'Artigianato Liutario e del Legno di Cremona, receiving his degree in 1978. He later attends the Faculty of Architecture, at the Politecnico di Milano where he graduates in 1986, while attending at the same time the Scuola Politecnica di Design in Milan from 1982 to 1984. In 1983 he starts working for Michele De Lucchi; he becomes a partner in 1986 and works there until 1991, when he decides to open his own studio in Milan. Laviani's work mainly focuses on product design, interior design, art direction and graphic. Since 1991, he is the Art Director for Kartell; same role he has played for other companies. He designs retail spaces and set-ups, offices and houses for private clients, as well as for furniture and fashion. In 2008 an exhibition was dedicated to the lamps he designed for Kartell. Bourgie and Take lamps for Kartell are part of the permanent Collection of IMA, *Indianapolis Museum of Art (USA)*; also other products have been featured in museums and shows all over the world. In 2015, Laviani develops the new concept for Kartell Museum in Noviglio, updating the interior design he had conceived in 1999, when he received the award Premio Guggenheim Impresa & Cultura 2000, as the best museum of a company. Last year, he has started a collaboration with the Italian mosaic brand Bisazza. In 2016 Ferruccio has designed the pop-up store for the fashion designer Paula Cademartori and the set-up for the Haute Couture Women show for Dolce e Gabbana, at Laboratori Ansaldo, Teatro alla Scala, Milan.

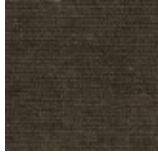


# COVER FINISHINGS

## FABRICS



A\_AS1 Saari



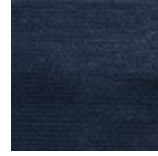
A\_AS2 Saari



A\_AS4 Saari



A\_AS5 Saari



A\_AS7 Saari



B\_CAE Cocò



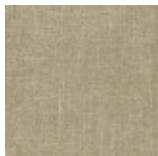
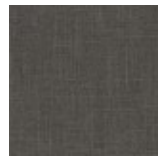
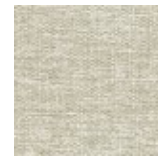
B\_CAM Cocò



B\_CAK Cocò



B\_CAF Cocò

B\_BC1  
BuranaB\_BC3  
BuranaB\_BC4  
BuranaB\_BC6  
Burana

C\_C10 Star



C\_C11 Star



C\_C17 Star



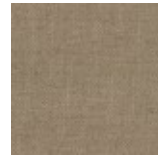
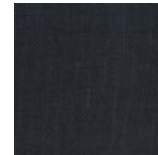
C\_C16 Star



C\_C18 Star



C\_C15 Star

D\_D91  
PanamaD\_D92  
PanamaD\_D93  
PanamaD\_D94  
PanamaD\_D95  
PanamaD\_D98  
Panama

D\_i71 Clou



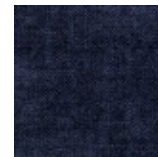
D\_i74 Clou



D\_i79 Clou



D\_i72 Clou



D\_i78 Clou

D\_D01  
UbyeD\_D03  
Ubye

**MisuraEmme®**



D\_D05  
Ubaye



E\_E20 Mood



E\_E25 Mood



E\_E22 Mood



E\_E26 Mood



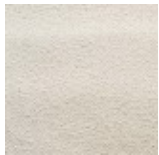
E\_E27 Mood



E\_E21 Mood



E\_E28 Mood



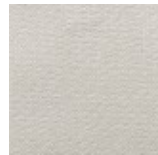
E\_E51 Lido



E\_E52 Lido



E\_E54 Lido



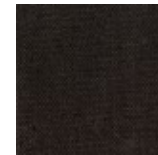
F\_E50 Luxus



F\_F01 Luxus



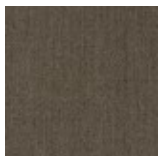
F\_F02 Luxus



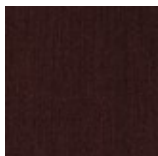
F\_F03 Luxus



F\_F05 Luxus



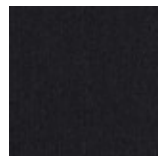
F\_F11 Lama



F\_F14 Lama



F\_F12 Lama



F\_F15 Lama



F\_F25  
Gaucho



F\_F21  
Gaucho



F\_F23  
Gaucho



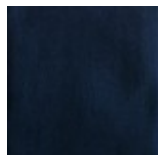
F\_F24  
Gaucho



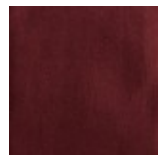
F\_F33 Velvet



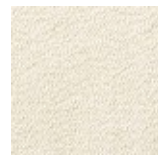
F\_F35 Velvet



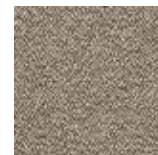
F\_F32 Velvet



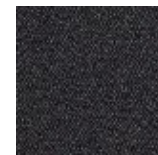
F\_EM5  
Velvet



H\_H42 Sera



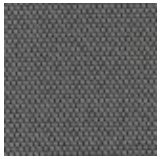
H\_H44 Sera



H\_H47 Sera



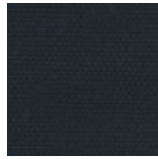
H\_H48 Sera



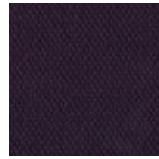
H\_H50  
Opera



H\_H53  
Opera



H\_H55  
Opera



H\_H56  
Opera

### SMOOTH LEATHERS



H30 Gesso



H38 Sand



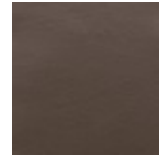
H36  
Camoscio



H32 Acacia



H31  
Naturale



H37  
Marmotta



H71 Testa di  
Moro



H35 Grigio  
Chiaro



H40 Blu  
Notte

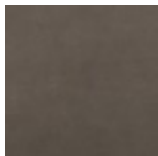


H73 Nero

### NUBUCK

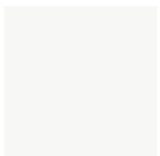


HN2  
Carbone



HN3 Grigio

### SMOOTH ECO-LEATHERS



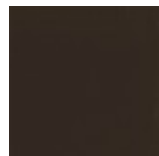
C\_CE1



C\_CD3



C\_CF6



C\_CD1



C\_CD4



C\_CD5

## EMBOSSSED ECO-LEATHERS



C\_CE3



C\_CE5



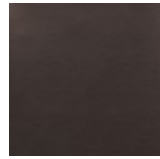
C\_CL1



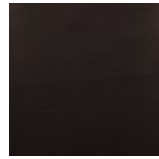
C\_CL3



C\_CL7



C\_CL8



C\_CL6

# STRUCTURE FINISHINGS

## METALS



522 Satinato

# TRAY FINISHINGS

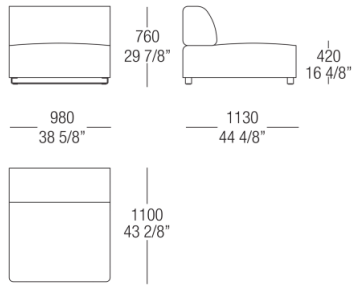
## MATT LACQUERED COLOURS



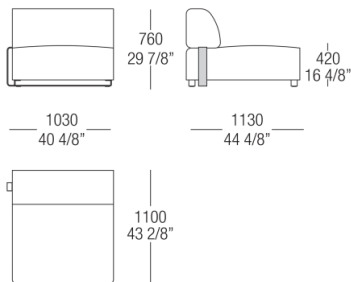


# DIMENSIONS

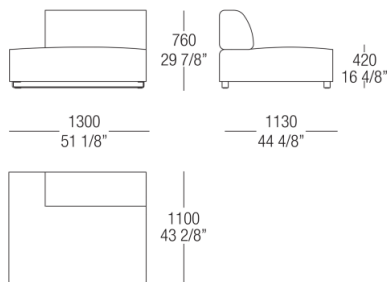
## Central element



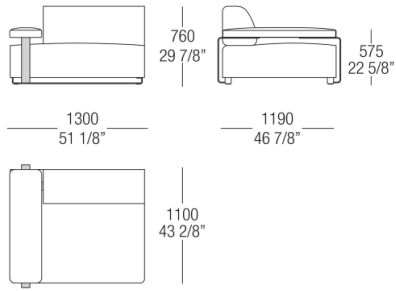
## Element with side metal bracket left/right



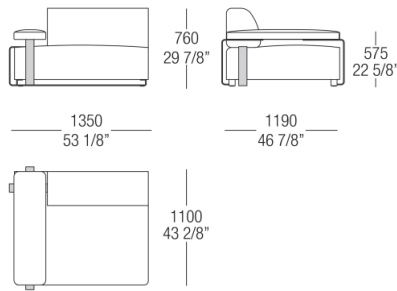
## Element without armrest left/right



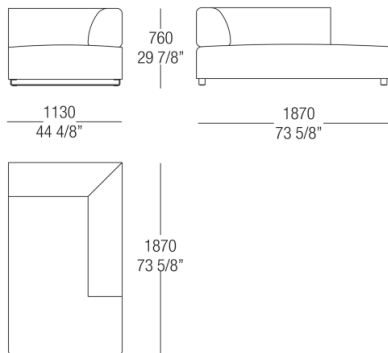
Element with armrest left/right



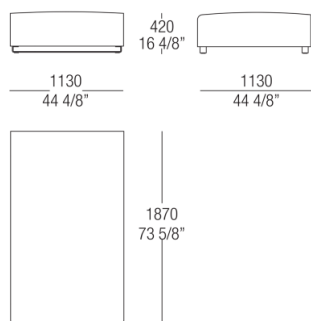
Element with armrest and side bracket left/right



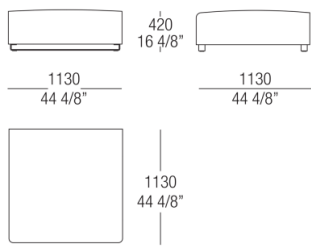
Chaise longue left/right



Rectangular pouf



### Square pouf



### Square pouf with tray top left/right

