

СКРЕЩИВАНИЕ

МАУРО ЛИППАРИНИ



Crossing - это универсальная модульная система панелей, с помощью которой можно создавать настенные стеллажи. Полностью регулируемый по трехмерным осям, он может выдержать до 400 кг. Программа предлагает серию модулей разных типов и размеров, подвесные шкафы с откидными, створчатыми или раздвижными дверцами, а также ящики разных размеров. Пересечение доступно в версии Fusion (с частями в облицованной или лакированной древесно-стружечной плите) или в версии Listellare (фанерованный или ламинированный тополь). В отсеках установлена специальная светодиодная система освещения. Отделка: матовый лак, глянцевые цвета, натуральное дерево, шпон / облицовка.

ТИП / СИСТЕМЫ

ТЕХНИЧЕСКОЕ ОПИСАНИЕ

Наш научно-исследовательский центр нашел материал высокой стабильности и неоспоримой легкости: три пересечения слоев твердой древесины тополя между двумя слоями из МДФ и облицованы.

Стороны - Основания - Полки - Настенные полки th.38mm.

*Панель th.38mm. в картоне из тополя с тремя скрещенными слоями и двумя поверхностными слоями панели МДФ, 38 мм, шпоном дерева или лакированной поверхностью. **Верхняя часть** Древесно-стружечная плита th.19mm из меламина, лакированная поверхность или дерево.*

Растровая вставка th.14mm. Серия боков и полок из МДФ, th.14 мм., Полки с задними панелями с подсветкой или без, включая алюминиевую профилированную крышку, с крепежом для задней части и светодиодным отделением в матовом или матовом лаке. **Задние панели Панели из**

MisuraEmme®

древесно-стружечных плит класса E1 th.14mm. матовая лакировка или отделка деревом.
Деревянные фасады Панели из ДСП с меламиновым покрытием, тыс. Т 22 мм лакированная поверхность или дерево с горизонтальным зерном. **Профиль фронтов «0»**

Melamine panel th.19mm. with applied tempered glass th.4mm, eco-leather, tecnomarble, wood panel. Aluminium or Gun metal profile.

Hinged and flap door "Narcisse Day"

th.22mm., metal frame in gun metal finish, dedicated handle, tempered glass.

"Bar" flap door

Folding th.50mm., includes led light inserted in upper protruding shelf, with eco-leather mat on the internal base shelf. Optional: mirror on back, n.2 compartment partitions with 1 glass shelf and n. 3 eco-leather mats on the internal base shelf, n.1 eco-leather mat inside the flap front panel.

"Teka" hinged doors

Box-shaped tempered glass th.6mm with visible hinges in brushed steel.

Panels to be inserted for external TV

Wood particleboard panel, class E1 th.25mm, in melamine facing, lacquered finish or wood.

Step-ladder

Tubular welded steel varnished metallic grey, steps in varnished tubular steel covered with non-slip plastic material. Fixture to the rails in plastic material.

Drawer interiors

Wood particleboard panels in class E1 Th.14mm, melamine faced. Drawer bottom: wood particleboard panels in class E1 Th.8mm.

All electrical systems are provided pre-wired in compliance with current laws.

SPALLE SOSPESE A MURO
HANGING SIDE PANELS



DESIGNER

MAURO LIPPARINI

Mauro Lipparini earned a degree in Architecture in 1980 from Università degli Studi of Florence, where he also worked as a professor. He won the international design contests Young & Designer Milan (1987) and International Du Pont Award Köln (Germany, 1988 and 1989). Lipparini's intense activity in the field of industrial design covers office and home furniture, the textile industry and other products created for many companies in Europe and Japan. In architecture and interior design, Lipparini has concentrated mainly on private and public housing, on showrooms, retail sales outlets and exposition installations. Furthermore, Lipparini also designs and realizes advanced corporate identity image systems that range from graphics to editorial services to production. Lipparini's style is based on the essential shapes and the clear and decisive lines that are characteristic of natural minimalism. His creations are imbued with a joyful spirit and with an elating sense of aesthetic pleasure and creativity. Thanks to his free use of color, organic weave patterns and original visual ideas, Lipparini amplifies the palette of minimalism, conveying the spontaneity and power of this aesthetic style and projecting it towards a new era of great maturity and wellbeing.



MisuraEmme

SIDE PANEL / BASE / SHELF / WALL SHELF FINISHINGS

MATT LACQUERED COLOURS



MisuraEmme®

MELAMINE



877
Ambience



878 Olmo
tranchè



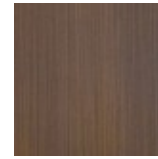
866 Cenere



853 Tabacco



841 Metallic
Champagne



842 Metallic
Dark Bronze

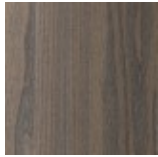


840 Metallic
Graphite

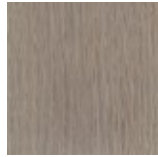
MATT VENEERS



66 Tabacco



53 Olmo
grey



50 Rovere
cenere



52 Rovere
fumé



51 Oak Black

TOP FINISHINGS

MATT LACQUERED COLOURS



MELAMINE



877
Ambience



878 Olmo
tranchè



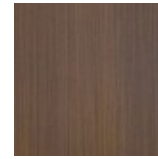
866 Cenere



853 Tabacco



841 Metallic
Champagne



842 Metallic
Dark Bronze

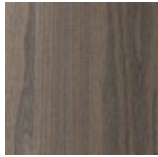


840 Metallic
Graphite

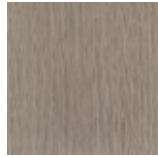
MATT VENEERS



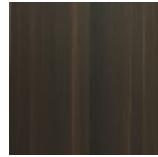
66 Tabacco



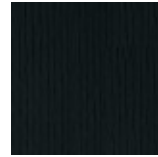
53 Olmo
grey



50 Rovere
cenere



52 Rovere
fumé



51 Oak Black

RASTER FINISHINGS

MATT LACQUERED COLOURS



BACK PANEL FINISHINGS

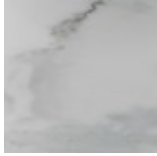
MATT LACQUERED COLOURS



TECNO-MARBLE



T01
Calacatta
Smooth Vena
grigia



T02
Calacatta
Oro

MELAMINE



877
Ambience



878 Olmo
tranchè



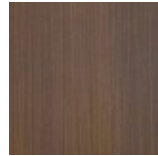
866 Cenere



853 Tabacco



841 Metallic
Champagne



842 Metallic
Dark Bronze

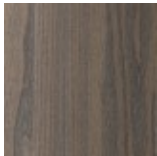


840 Metallic
Graphite

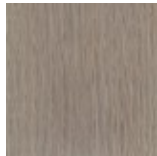
MATT VENEERS



66 Tabacco



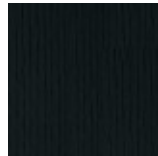
53 Olmo
grey



50 Rovere
cenere



52 Rovere
fumé



51 Oak Black

WOODEN FRONT FINISHINGS

MATT LACQUERED COLOURS



MATT LACQUERED ANTIQUE BRASS COLOURS



7R Ottone
Anticato



5R Dark
Bronze
Anticato



6R Graphite
Anticato

HIGH GLOSS LACQUERED COLORS



L01 Gesso



L8B Caolino



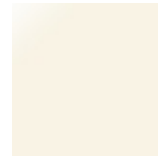
L9G Ostrica



L6B Grigio
Pietra



L14 Nero



L02 Talco



L9F Sand



L4G Argilla



L8C
Cappuccino



L5B Grigio
Lava



L72 Sabbia



L8A Beige



L9T Toffee



L93 Melange



L13 Sepia



L09 Wengè



L98 Oliva



L8S Giallo



L9B Senape



L94 Marsala



L81 Fuoco



L95 Ruggine



L9H Petrolio



L9E Deep
Blu

MELAMINE



877
Ambience



866 Cenere



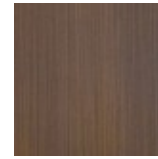
853 Tabacco



851 Rovere
Nero



841 Metallic
Champagne



842 Metallic
Dark Bronze

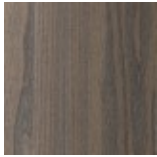


840 Metallic
Graphite

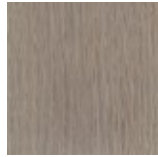
MATT VENEERS



66 Tabacco



53 Olmo
grey



50 Rovere
cenere



52 Rovere
fumé



51 Oak Black



62 Ebano



54 Eucalipto

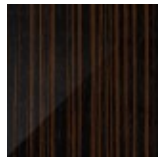
GLOSSY VENEERS



L53 Olmo
Grey



L51 Rovere
Nero



L62 Ebano



L54
Eucalipto

FRONT PROFILE "0" FINISHINGS

VARNISHED GLASS



01 Gesso

8B Caolino

9G Ostrica

6B Grigio
Pietra

14 Nero

02 Talco

9F Sand



4G Argilla

8C
Cappuccino5B Grigio
Lava

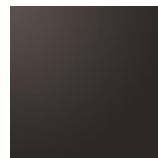
72 Sabbia

8A Beige

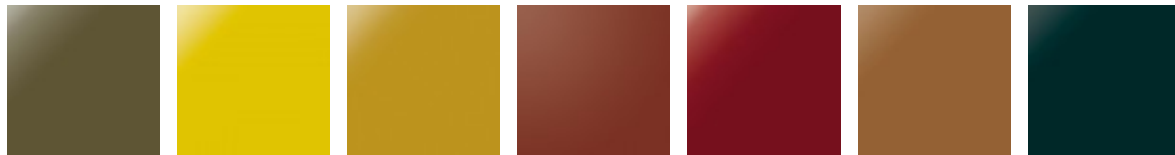
9T Toffee

93 Melange

13 Sepia



09 Wengè



98 Oliva

8S Giallo

9B Senape

94 Marsala

81 Fuoco

95 Ruggine

9H Petrolio

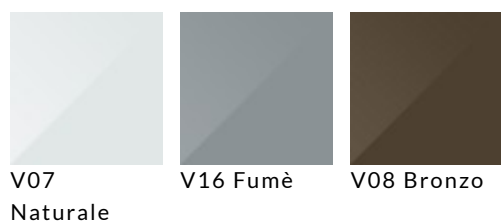


9E Deep Blu

FROSTED VARNISHED GLASS



MIRRORS



FROSTED MIRROR

V02
Naturale

V17 Grey



V11 Bronzo

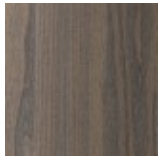
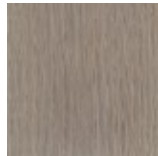
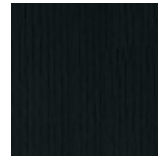
TECNO-MARBLE

T01
Calacatta
Smooth Vena
grigiaT02
Calacatta
Oro

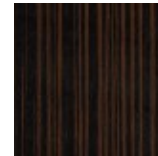
MATT VENEERS



66 Tabacco

53 Olmo
grey50 Rovere
cenere52 Rovere
fumé

51 Oak Black



62 Ebano

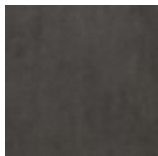
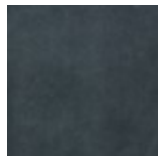


54 Eucalipto

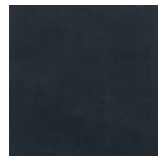
SUEDE LEATHERS



HA6 Neve

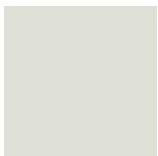
HA5
Marmotta

HA2 Nuvola



HA3 Blu

EMBOSSSED ECO-LEATHERS



C_CE3



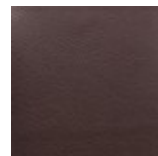
C_CE5



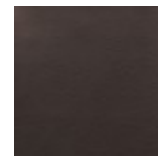
C_CL1



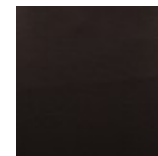
C_CL3



C_CL7



C_CL8



C_CL6

MisuraEmme®

DOOR NARCISSE DAY FINISHINGS

VARNISHED GLASS



01 Gesso



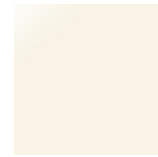
8B Caolino



9G Ostrica

6B Grigio
Pietra

14 Nero



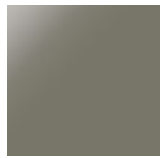
02 Talco



9F Sand



4G Argilla

8C
Cappuccino5B Grigio
Lava

72 Sabbia



8A Beige



9T Toffee



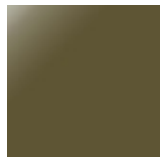
93 Melange



13 Sepia



09 Wengè



98 Oliva



8S Giallo



9B Senape



94 Marsala



81 Fuoco



95 Ruggine



9H Petrolio

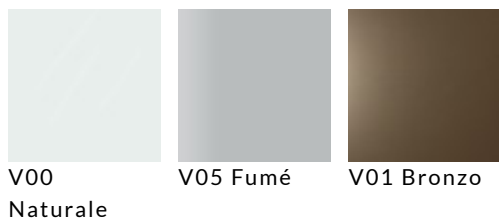


9E Deep Blu

FROSTED VARNISHED GLASS



TRANSPARENT GLASS



REFLECTING GLASS



V18
Naturale



V04 Fumé



V03 Bronzo

DRAWER INTERIOR FINISHINGS

MELAMINE



877

Ambience

TV PANEL FINISHINGS

MATT LACQUERED COLOURS



HIGH GLOSS LACQUERED COLORS



L01 Gesso



L8B Caolino



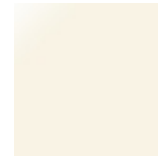
L9G Ostrica



L6B Grigio
Pietra



L14 Nero



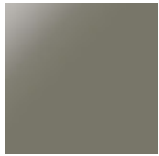
L02 Talco



L9F Sand



L4G Argilla



L8C
Cappuccino



L5B Grigio
Lava



L72 Sabbia



L8A Beige



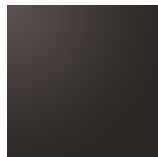
L9T Toffee



L93 Melange



L13 Sepia



L09 Wengè



L98 Oliva



L8S Giallo



L9B Senape



L94 Marsala



L81 Fuoco



L95 Ruggine



L9H Petrolio



L9E Deep
Blu

MELAMINE



877
Ambience



866 Cenere



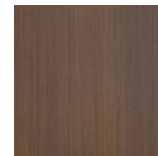
853 Tabacco



851 Rovere
Nero



841 Metallic
Champagne



842 Metallic
Dark Bronze

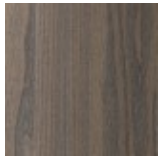


840 Metallic
Graphite

MATT VENEERS



66 Tabacco



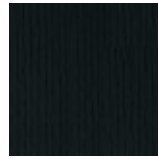
53 Olmo
grey



50 Rovere
cenere



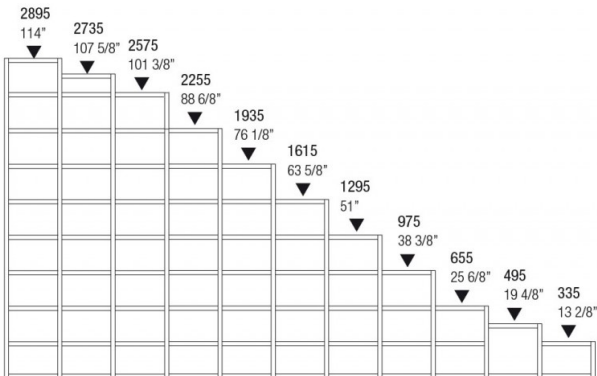
52 Rovere
fumé



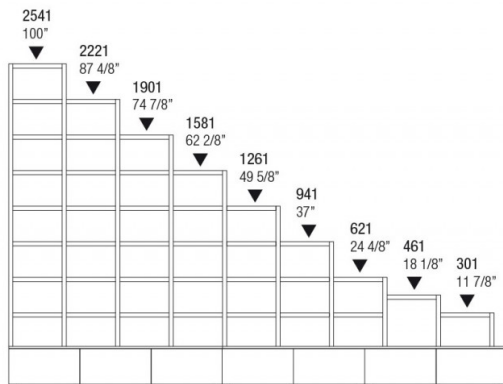
51 Oak Black

DIMENSIONS

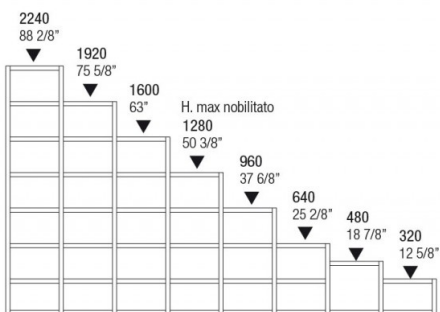
ALTEZZA PER MODULI A TERRA
HEIGHTS FOR FLOOR-BASED MODULES



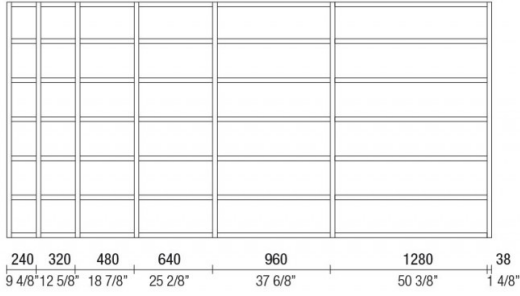
ALTEZZA PER MODULI SOPRALZO SU CONTENITORI
HEIGHTS FOR OVERHANGING MODULES ON CONTAINERS



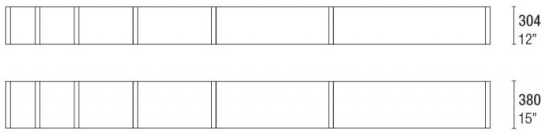
ALTEZZA PER MODULI PENSILI
HEIGHTS FOR HANGING MODULES



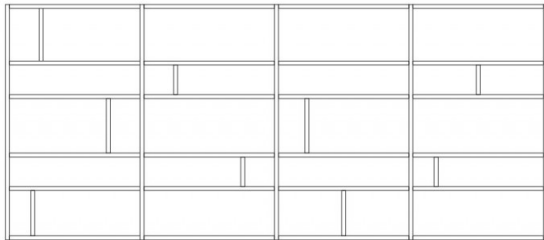
LARGHEZZA
WIDTH



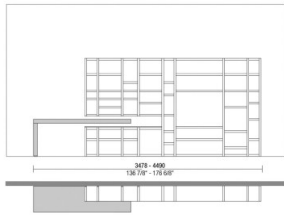
PROFONDITÀ
DEPTH



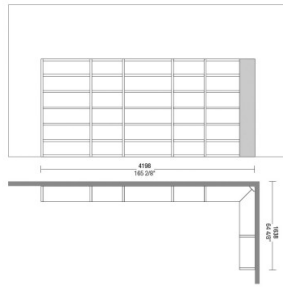
SPALLE DA INSERIMENTO sp.38mm.
INSERTION PANELS th.38 mm (1 4/8")



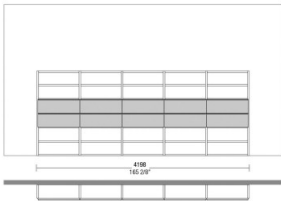
Esempio composizione / Composition example
Crossing CR07-08



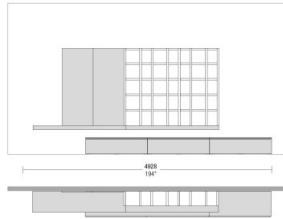
Esempio composizione / Composition example
Crossing CR08-08



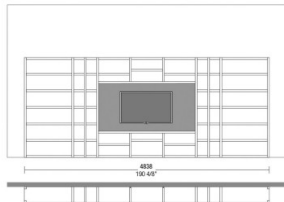
Esempio composizione / Composition example
Crossing CR03-08



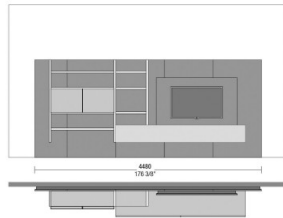
Esempio composizione / Composition example
Crossing CR13-08



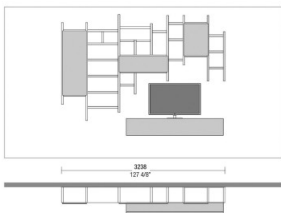
Esempio composizione / Composition example
Crossing CR04-08



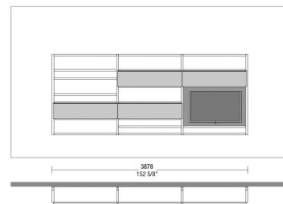
Esempio composizione / Composition example
Crossing CR02-17



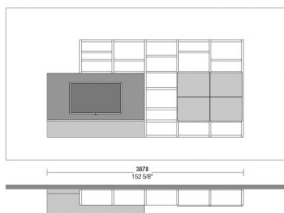
Esempio composizione / Composition example
Crossing CR01-17



Esempio composizione / Composition example
Crossing CR12-08



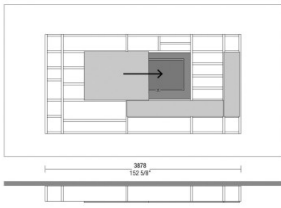
Esempio composizione / Composition example
Crossing CR01-10



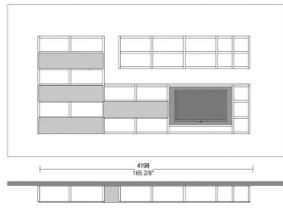
Esempio composizione / Composition example
Crossing CR03-17



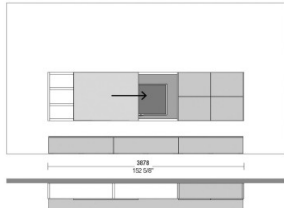
Esempio composizione / Composition example
Crossing CCR11-10



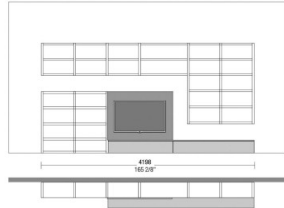
Esempio composizione / Composition example
Crossing CCR10-10



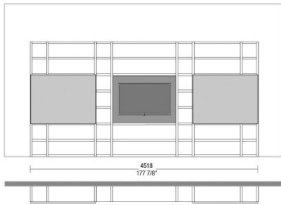
Esempio composizione / Composition example
Crossing CCR06-10



Esempio composizione / Composition example
Crossing CCR09-10



Esempio composizione / Composition example
Crossing CR09-08



Esempio composizione / Composition example
Crossing CR19-08

