

ЭЛЕГИЯ

ИГНАЦИО ГАРДЕЛЛА



Исторический продукт 1949 года

Новая редакция дизайна Игнацио Гарделлы 1949 года, отмеченная также как одна из самых первых реализаций, которая предвосхитила концепцию модульности.

Алюминиевые металлические стойки с отверстиями, просверленными каждые 40 мм. (1 5/8 ") и в комплекте с необходимыми креплениями к стене, в черной эпоксидной эмалию на хромированной металлической основе. Доступны две полки с держателями полок из хромированного металла, матового лака или шпона. Полки глубиной 460 мм (18 1/8 ") можно использовать как стол, подставку под телевизор или для размещения систем HI-FI. Композиция получается простым размещением нескольких модулей рядом друг с другом.

ТИП / КНИЖНЫЕ ШКАФЫ

ТЕХНИЧЕСКОЕ ОПИСАНИЕ

В вертикальном положении: из тянутой стали 100 x 100 мм (3 7/8 "x 3 7/8" дюйма), черная эпоксидная эмаль, кронштейн для крепления на стене из хромированной стали.

Держатели полок подвижные, из литого хромированного замака с эксцентриковым штифтом для регулировки полки.

Основа из хромированной стали с хромированными латунными наконечниками.

Полки 20 мм (6/8 дюйма); щитовая панель из елового дерева, покрытая двумя слоями МДФ, толщиной 3 мм (1/8 дюйма), края толщиной 1 мм (1/16 дюйма).

Матовая лакированная поверхность: полуматовый пигментированный лак на водной основе с

MisuraEmme®

закрытыми порами или полуматовый пигментированный лак с закрытыми порами.

Отделка дерева: *полированный прозрачный полуматовый лак с открытыми порами.*

трап *and ladder support in metal, painted black with details in chromed brass.*



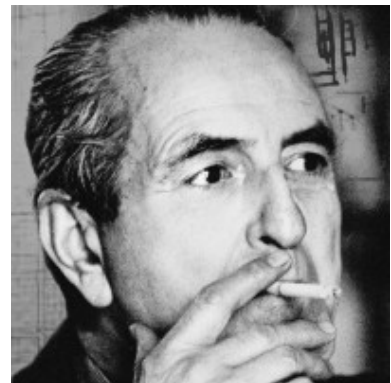
DESIGNER

IGNAZIO GARDELLA

The descendent of a family of engineers and architects – a tradition that he respected, graduating in Civil Engineering from the Politecnico di Milano in 1928 –, Ignazio Mario Gardella, born in 1905 and deceased in 1999, played a central role in all the new developments of the 20th century, becoming one of the architects of the changes underway in the world of design and architecture. His numerous trips abroad, the connections he made during his university years and the work that came from his father's firm put him into contact with a series of prominent figures of the time who left a deep mark on his architectural approach, a precious legacy for the modern day that fused methodical precision and intellectual curiosity.

It was mainly the city of Milan that benefitted from his eclectic and disruptive personality, ever since Gardella became one of the promoters of the *Piano A.R.* ("Architects Reunited Plan") in 1943: this project for a new city plan constituted one of the greatest tests for Milanese architects due to its optimistic desire to rethink and rebuild the city as an expression of a new democratic society. With this in mind, in 1945 he became one of the founders of the Movimento di Studi per l'Architettura (MSA – Movement for Architectural Studies), committing himself to tackling the main issues of the architectural and city planning debate regarding reconstruction.

His conception of architecture as "art", somewhere between a utilitarian construction and an artistic work, inevitably influenced the products that resulted from his collaboration with MisuraEmme, which began in the '70s.

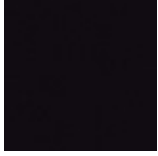


MisuraEmme®

Gardella redesigned historic pieces and created a new collection, marking an important moment in the company's history. The richness and variety of the products that ensued was also the subject of the "Ignazio Gardella Architetto" exhibition held in the spring of 1989 and organized by MisuraEmme and by the Museum of Contemporary Furnishing in Ravenna. The timeless emblem of this exchange of knowledge is the Elegie bookcase, which over the years has become an iconic piece of modern design.

UPRIGHT FINISHINGS

METALS



538

Verniciato

Nero

SHELF SUPPORTS / FEET FINISHINGS

METALS



502
Nichelato
oro

SHELVES FINISHINGS

MATT LACQUERED COLOURS



MATT VENEERS



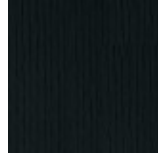
53 Olmo
grey



50 Rovere
cenere



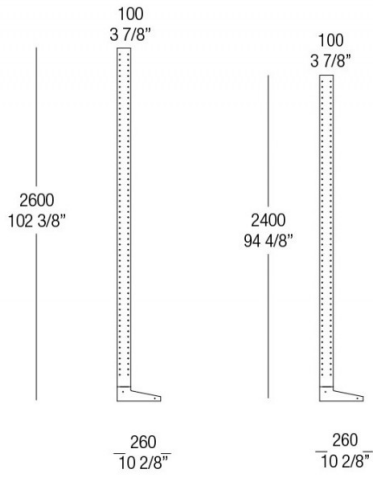
52 Rovere
fumé



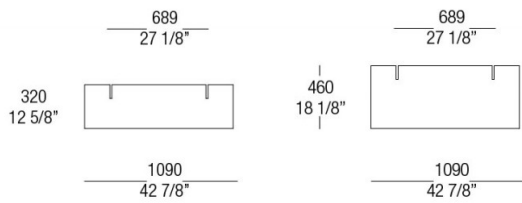
51 Oak Black

DIMENSIONS

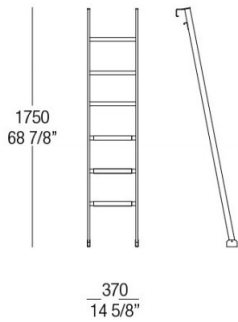
MONTANTI / UPRIGHT



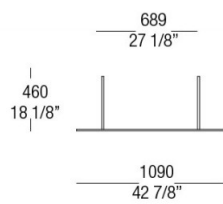
RIPIANI / SHELVES



SCALETTA / LADDER

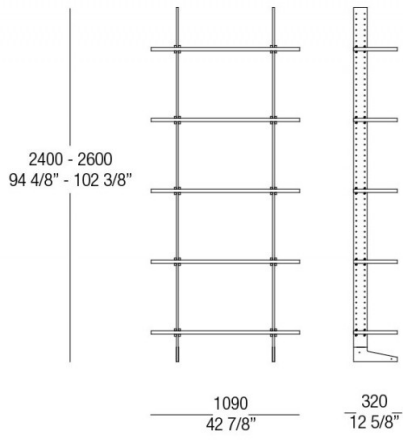


SOSTEGNO PER SCALETTA SUPPORT FOR STEP-LADDER

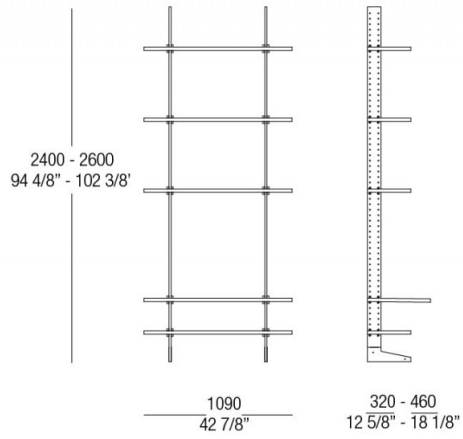


MisuraEmme®

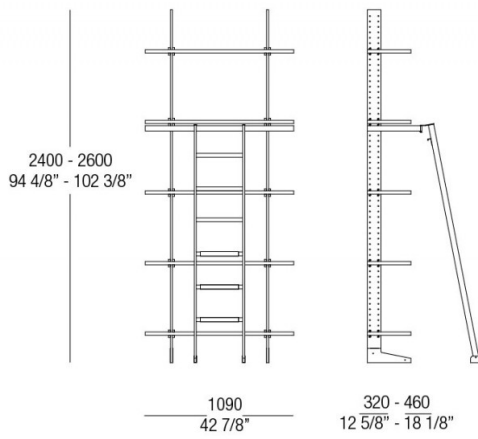
COMPOSIZIONE / COMPOSITION



COMPOSIZIONE / COMPOSITION



COMPOSIZIONE / COMPOSITION



COMPOSIZIONE / COMPOSITION

