

# MADISON

MAURO LIPPARINI



The carefully calibrated, subtle aesthetics of the large **Madison** sofa provide an instant sensation of comfort. Its sleek feet make it an almost ethereal presence in the living room, bringing a sense of contemporaneity to the home.

## TYPE / SOFAS

### TECHNICAL DESCRIPTION

*Collection comprising linear sofas with fixed shapes in three different widths: W 2000-2400-2800 mm (78 6/8" - 94 4/8" - 110 2/8" inch).*

**Base:** *shaped multilayer panel reinforced with tubular frame in varnished metal.*

**Feet** *in satined metal or metal gun.*

**Frame, armrests and back panels** *in wooden hollow frame fixed to the base.*

**Padding:** *base covered with shaped polyurethane foam matched to light velvet.*

**Armrests and backrests:** *shaped polyurethane foam with different densities covered in fibre with polyester jersey.*

**Seat** *in polyurethane foam with different densities covered in fibre 200/400gr with polyester jersey.*

*Removable cover on seat and backrest cushions.*

**MisuraEmme®**



## DESIGNER

MAURO LIPPARINI

**Mauro Lipparini** earned a degree in Architecture in 1980 from Università degli Studi of Florence, where he also worked as a professor. He won the international design contests Young & Designer Milan (1987) and International Du Pont Award Köln (Germany, 1988 and 1989). Lipparini's intense activity in the field of industrial design covers office and home furniture, the textile industry and other products created for many companies in Europe and Japan. In architecture and interior design, Lipparini has concentrated mainly on private and public housing, on showrooms, retail sales outlets and exposition installations. Furthermore, Lipparini also designs and realizes advanced corporate identity image systems that range from graphics to editorial services to production. Lipparini's style is based on the essential shapes and the clear and decisive lines that are characteristic of natural minimalism. His creations are imbued with a joyful spirit and with an elating sense of aesthetic pleasure and creativity. Thanks to his free use of color, organic weave patterns and original visual ideas, Lipparini amplifies the palette of minimalism, conveying the spontaneity and power of this aesthetic style and projecting it towards a new era of great maturity and wellbeing.



**MisuraEmme®**

# COVER FINISHINGS

## FABRICS



A\_AS1 Saari



A\_AS2 Saari



A\_AS4 Saari



A\_AS5 Saari



A\_AS7 Saari



B\_CAE Cocò



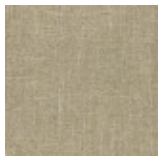
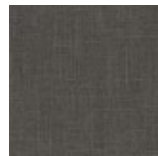
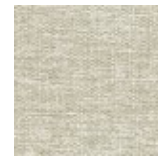
B\_CAM Cocò



B\_CAK Cocò



B\_CAF Cocò

B\_BC1  
BuranaB\_BC3  
BuranaB\_BC4  
BuranaB\_BC6  
Burana

C\_C10 Star



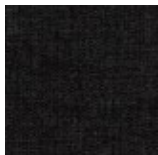
C\_C11 Star



C\_C17 Star



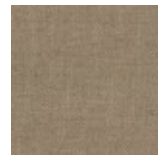
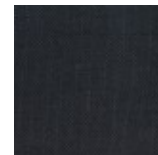
C\_C16 Star



C\_C18 Star



C\_C15 Star

D\_D91  
PanamaD\_D92  
PanamaD\_D93  
PanamaD\_D94  
PanamaD\_D95  
PanamaD\_D98  
Panama

D\_i71 Clou



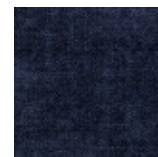
D\_i74 Clou



D\_i79 Clou



D\_i72 Clou



D\_i78 Clou

D\_D01  
UbayeD\_D03  
Ubaye

**MisuraEmme®**



D\_D05  
Ubaye



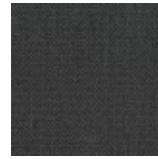
E\_E20 Mood



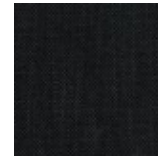
E\_E25 Mood



E\_E22 Mood



E\_E26 Mood



E\_E27 Mood



E\_E21 Mood



E\_E28 Mood



E\_E51 Lido



E\_E52 Lido



E\_E54 Lido



F\_E50 Luxus



F\_F01 Luxus



F\_F02 Luxus



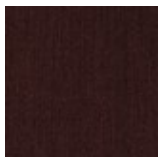
F\_F03 Luxus



F\_F05 Luxus



F\_F11 Lama



F\_F14 Lama



F\_F12 Lama



F\_F15 Lama



F\_F25  
Gaucho



F\_F21  
Gaucho



F\_F23  
Gaucho



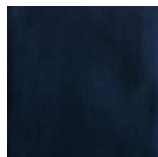
F\_F24  
Gaucho



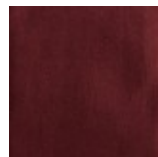
F\_F33 Velvet



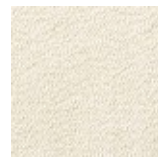
F\_F35 Velvet



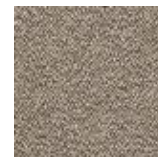
F\_F32 Velvet



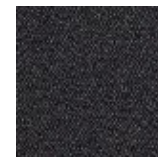
F\_EM5  
Velvet



H\_H42 Sera



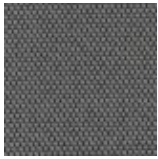
H\_H44 Sera



H\_H47 Sera



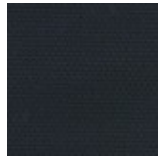
H\_H48 Sera



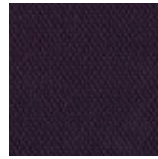
H\_H50  
Opera



H\_H53  
Opera



H\_H55  
Opera



H\_H56  
Opera

### SMOOTH LEATHERS



H30 Gesso



H38 Sand



H36  
Camoscio



H32 Acacia



H31  
Naturale



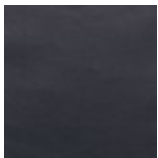
H37  
Marmotta



H71 Testa di  
Moro



H35 Grigio  
Chiaro

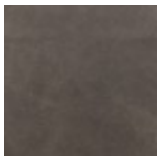


H40 Blu  
Notte

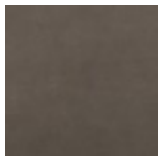


H73 Nero

### NUBUCK

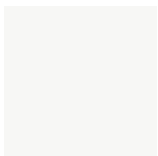


HN2  
Carbone



HN3 Grigio

### SMOOTH ECO-LEATHERS



C\_CE1



C\_CD3



C\_CF6



C\_CD1



C\_CD4



C\_CD5

## EMBOSSSED ECO-LEATHERS



C\_CE3



C\_CE5



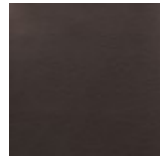
C\_CL1



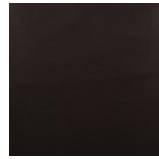
C\_CL3



C\_CL7



C\_CL8



C\_CL6

# FEET FINISHINGS

## METALS



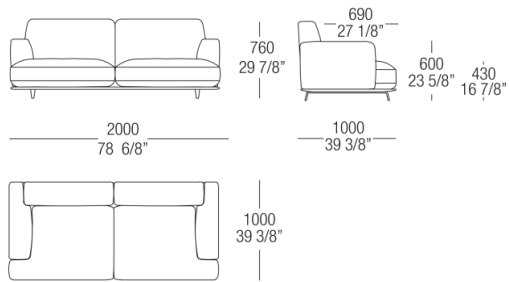
522 Satinato



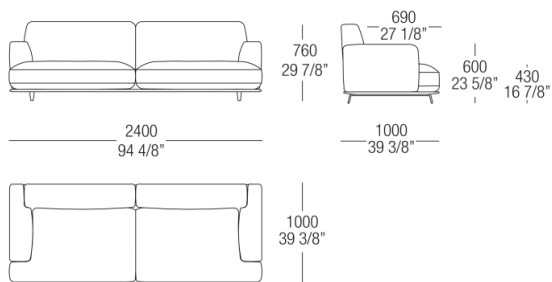
524  
Verniciato  
Canna di  
fucile

# DIMENSIONS

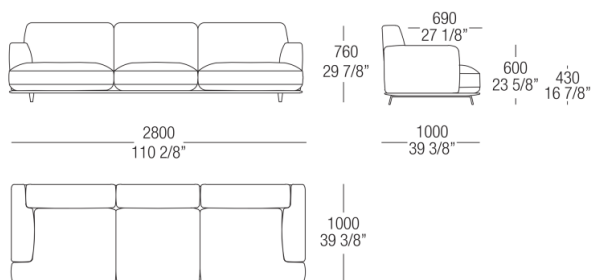
## Linear sofa - 2 seaters



## Linear sofa - 2 seaters maxi



## Linear sofa - 3 seaters





**MisuraEmme®**