

# НИЦЦА

ФЕРРУЧЧО ЛАВИАНИ



Ницца. Мягкая кровать выбрана за ее мягкость, комфорт и форму. Проект был разработан с учетом этих фиксированных точек. Привлекательное изогнутое изголовье, которое дает поддержку при чтении книги или мягкое и удобное в состоянии покоя, которое становится частью конструкции, которая также дополнена как в продольных полосах, так и в опорах с большими индивидуальными деталями. Пенополиуретановая структура с холодным напылением, обитая кожей, со съемным покрытием.

ТИП / КРОВАТИ

**MisuraEmme®**



## ДИЗАЙНЕР

### ФЕРРУЧЧО ЛАВИАНИ

Born in Cremona in 1960 Laviani attends the Istituto Professionale Internazionale per l'Artigianato Liutario e del Legno di Cremona, receiving his degree in 1978. He later attends the Faculty of Architecture, at the Politecnico di Milano where he graduates in 1986, while attending at the same time the Scuola Politecnica di Design in Milan from 1982 to 1984. In 1983 he starts working for Michele De Lucchi; he becomes a partner in 1986 and works there until 1991, when he decides to open his own studio in Milan. Laviani's work mainly focuses on product design, interior design, art direction and graphic. Since 1991, he is the Art Director for Kartell; same role he has played for other companies. He designs retail spaces and set-ups, offices and houses for private clients, as well as for furniture and fashion. In 2008 an exhibition was dedicated to the lamps he designed for Kartell. Bourgie and Take lamps for Kartell are part of the permanent Collection of IMA, *Indianapolis Museum of Art (USA)*; also other products have been featured in museums and shows all over the world. In 2015, Laviani develops the new concept for Kartell Museum in Noviglio, updating the interior design he had conceived in 1999, when he received the award Premio Guggenheim Impresa & Cultura 2000, as the best museum of a company. Last year, he has started a collaboration with the Italian mosaic brand Bisazza. In 2016 Ferruccio has designed the pop-up store for the fashion designer Paula Cademartori and the set-up for the Haute Couture Women show for Dolce e Gabbana, at Laboratori Ansaldo, Teatro alla Scala, Milan.



**MisuraEmme®**

# HEADBOARD FRONT FINISHINGS

## FABRICS



A\_AS1 Saari



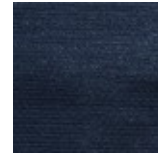
A\_AS2 Saari



A\_AS4 Saari



A\_AS5 Saari



A\_AS7 Saari



B\_CAE Cocò



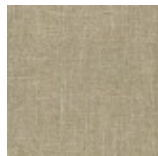
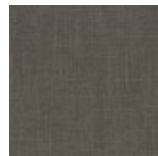
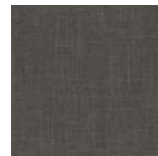
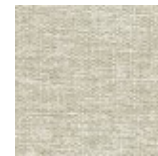
B\_CAM Cocò



B\_CAK Cocò



B\_CAF Cocò

B\_BC1  
BuranaB\_BC3  
BuranaB\_BC4  
BuranaB\_BC6  
Burana

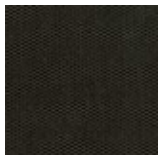
C\_C10 Star



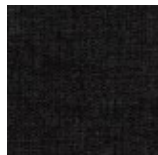
C\_C11 Star



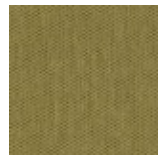
C\_C17 Star



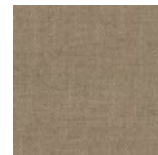
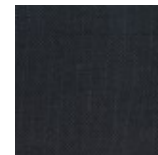
C\_C16 Star



C\_C18 Star



C\_C15 Star

D\_D91  
PanamaD\_D92  
PanamaD\_D93  
PanamaD\_D94  
PanamaD\_D95  
PanamaD\_D98  
Panama

D\_i71 Clou



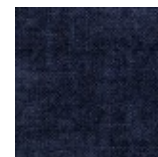
D\_i74 Clou



D\_i79 Clou



D\_i72 Clou



D\_i78 Clou

D\_D01  
UbyeD\_D03  
Ubye

**MisuraEmme®**



D\_D05  
Ubaye



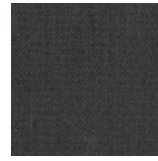
E\_E20 Mood



E\_E25 Mood



E\_E22 Mood



E\_E26 Mood



E\_E27 Mood



E\_E21 Mood



E\_E28 Mood



E\_E51 Lido



E\_E52 Lido



E\_E54 Lido



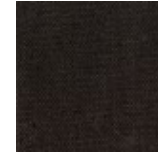
F\_E50 Luxus



F\_F01 Luxus



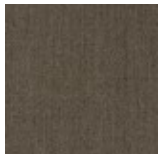
F\_F02 Luxus



F\_F03 Luxus



F\_F05 Luxus



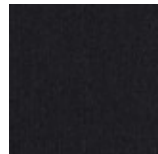
F\_F11 Lama



F\_F14 Lama



F\_F12 Lama



F\_F15 Lama



F\_F25  
Gaucho



F\_F21  
Gaucho



F\_F23  
Gaucho



F\_F24  
Gaucho



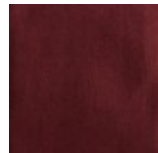
F\_F33 Velvet



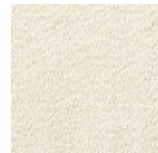
F\_F35 Velvet



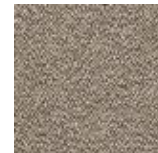
F\_F32 Velvet



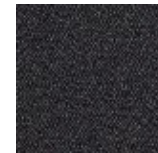
F\_EM5  
Velvet



H\_H42 Sera



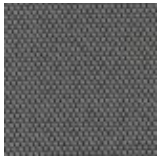
H\_H44 Sera



H\_H47 Sera



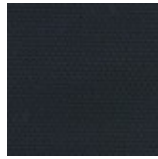
H\_H48 Sera



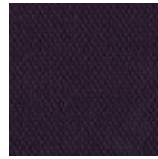
H\_H50  
Opera



H\_H53  
Opera



H\_H55  
Opera



H\_H56  
Opera

### SMOOTH LEATHERS



H30 Gesso



H38 Sand



H36  
Camoscio



H32 Acacia



H31  
Naturale



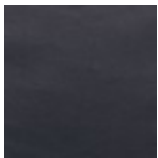
H37  
Marmotta



H71 Testa di  
Moro



H35 Grigio  
Chiaro

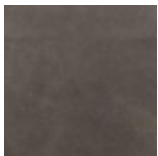


H40 Blu  
Notte

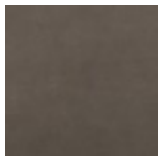


H73 Nero

### NUBUCK

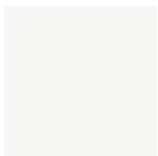


HN2  
Carbone



HN3 Grigio

### SMOOTH ECO-LEATHERS



C\_CE1



C\_CD3



C\_CF6



C\_CD1

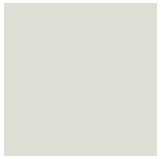


C\_CD4



C\_CD5

## EMBOSSSED ECO-LEATHERS



C\_CE3



C\_CE5



C\_CL1



C\_CL3



C\_CL7



C\_CL8



C\_CL6

# BEDFRAME / HEADBOARD BACK FINISHINGS

## FABRICS



A\_AS1 Saari



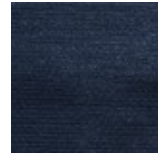
A\_AS2 Saari



A\_AS4 Saari



A\_AS5 Saari



A\_AS7 Saari



B\_CAE Cocò



B\_CAM Cocò



B\_CAK Cocò



B\_CAF Cocò

B\_BC1  
BuranaB\_BC3  
BuranaB\_BC4  
BuranaB\_BC6  
Burana

C\_C10 Star



C\_C11 Star



C\_C17 Star



C\_C16 Star



C\_C18 Star



C\_C15 Star

D\_D91  
PanamaD\_D92  
PanamaD\_D93  
PanamaD\_D94  
PanamaD\_D95  
Panama



D\_D98  
Panama



D\_i71 Clou



D\_i74 Clou



D\_i79 Clou



D\_i72 Clou



D\_i78 Clou



D\_D01  
Ubaye



D\_D03  
Ubaye



D\_D05  
Ubaye



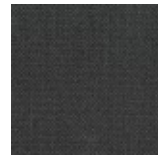
E\_E20 Mood



E\_E25 Mood



E\_E22 Mood



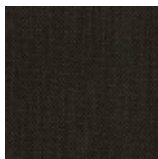
E\_E26 Mood



E\_E27 Mood



E\_E21 Mood



E\_E28 Mood



E\_E51 Lido



E\_E52 Lido



E\_E54 Lido



F\_E50 Luxus



F\_F01 Luxus



F\_F02 Luxus



F\_F03 Luxus



F\_F05 Luxus



F\_F11 Lama



F\_F14 Lama



F\_F12 Lama



F\_F15 Lama



F\_F25  
Gaucho



F\_F21  
Gaucho

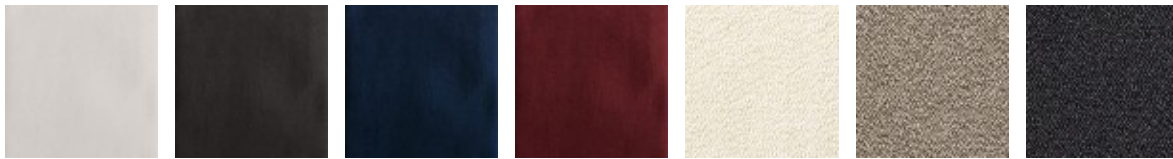


F\_F23  
Gaucho



F\_F24  
Gaucho





F\_F33 Velvet

F\_F35 Velvet

F\_F32 Velvet

F\_EM5  
Velvet

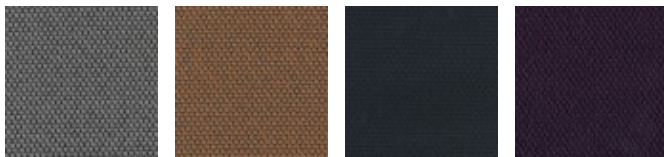
H\_H42 Sera

H\_H44 Sera

H\_H47 Sera



H\_H48 Sera



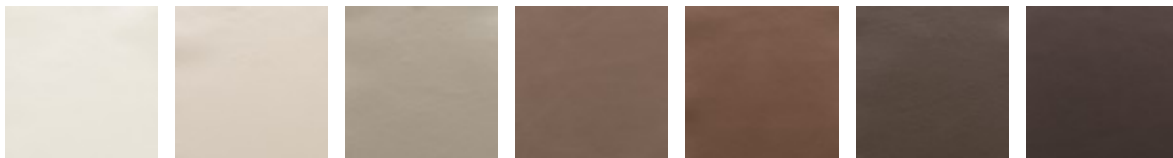
H\_H50  
Opera

H\_H53  
Opera

H\_H55  
Opera

H\_H56  
Opera

### SMOOTH LEATHERS



H30 Gesso

H38 Sand

H36  
Camoscio

H32 Acacia

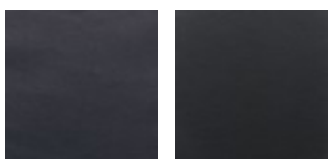
H31  
Naturale

H37  
Marmotta

H71 Testa di  
Moro



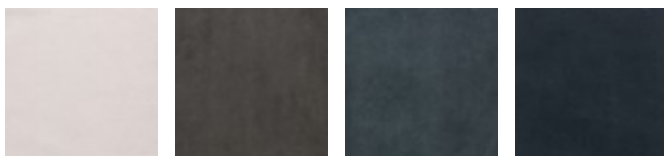
H35 Grigio  
Chiaro



H40 Blu  
Notte

H73 Nero

### SUEDE LEATHERS



HA6 Neve

HA5  
Marmotta

HA2 Nuvola

HA3 Blu

### NUBUCK



HN2  
Carbone

HN3 Grigio

### SMOOTH ECO-LEATHERS



C\_CE1

C\_CD3

C\_CF6

C\_CD1

C\_CD4

C\_CD5

### EMBOSSSED ECO-LEATHERS



C\_CE3

C\_CE5

C\_CL1

C\_CL3

C\_CL7

C\_CL8

C\_CL6

**MisuraEmme®**