

# OVER

CASTIGLIA ASSOCIATI



The freedom of composition **Over** enables the design of broader spans as long as 2200 mm, asymmetrical geometries able to lighten the visual perception by breaking free of the concept of a pure day system and, in support, the horizontal electrified woodwork creates an integrated lighting system. Finishes give an extra special touch and a truly personalization: wood, tecno-marble, tecno-metal, glass and leather are combined in an exceptional material and colours balance that displays – at every combination – a new **Over**.

## TYPE / SYSTEMS

### TECHNICAL DESCRIPTION

**Over** is a modular system of units 380mm. (15") deep available in 7 widths and 2 heights. Back panels th. 25mm (1") available in different finishes that can be overlapped through aluminum trims system, patented by MisuraEmme, integrated with a recessed lighting system.

#### **Side Panels - Bases - Wooden Shelves**

Panel th.38mm (1 4/8") in poplar blockboard with three crisscrossed layers and two surface layers of MDF panel th.38mm (1 4/8").

#### **Side Panels**

Option of inserts in different finishes to be matched to the back ones, fitted through flush channeling groove system, equipped with adjustable feet.

#### **Back panels**

Wood particleboard panels in class E1 th.25mm (1") matt lacquer or wood finish or to be matched as follows wood and wood / tecnomarble and wood / glass and wood.

**MisuraEmme®**

**Leather shelves th.38mm (1 4/8")**

Trapezoid shaped aluminum draw-plate structure with aluminum side covers, coated completely in smooth leather. Fitting to the back panel through aluminum trims, patented by MisuraEmme, included recessed Led lighting cables system. Led.

**Drawers**

External structure covered in tecnomarble, glass or matt lacquer. Internal structure in wood particleboard panels melamine Primo Fiore with totally pull-out guides. Drawer with under protruding opening.

**Hinged doors / flap down doors th.22mm (7/8")**

Hinged doors with push-pull opening. Flap down doors with over protruding opening. Aluminum frame in gun metal or titanium that can be matched with:

- wooden panel th.6mm (2/8") in matt lacquer or veneer
- glass panel th.4mm (1/8") rear varnished or transparent
- tecnomarble th.6mm (2/8")

**Finishings**

Side panels, bases and wooden selves: matt lacquer / wood.

Side panels inserts: matt lacquer / glass / mirror / tecnomarble.

Back panels: matt lacquer / wood, can be matched with matt lacquer / glass / mirror / tecnomarble.

Smooth leather selves.

Hinged doors and flap down doors "Narcisse Day": aluminum frame can be matched with wood / glass / tecnomarble.

# DESIGNER

## CASTIGLIA ASSOCIATI

**Sergio Castiglia** with **Marinella Santarelli** and **Maria Tiziana Tazza** have been creating, developing projects and promoting activities in the fields of design and architecture for more than thirty years, and their projects have contributed to the creation of Italian Style. The Studio's professional competence and heterogeneous experiences have built up a work-team able to deal with creative scenarios and manufacturing sites dedicated to the research of contents and aesthetics of the present. In these past few years, the Studio's working method has been subject to considerable changes, both because of the evolution of computer systems with consequent new graphic representation techniques, and the need to interpret the project as a whole, from its initial concept through its very communication. Successful relations in art direction have been established with several companies, thus enabling the designers to oversee the various project stages and therefore ensure a better product quality. Many are the successful products designed in these years, which have received mentions and won awards in exhibitions and fairs of various sectors. Since 2010 several collaborations abroad have begun functioning (Russia, Oman, Qatar and China) with important companies in the field of design and architecture.



# STRUCTURE / SHELVES FINISHINGS

## MATT LACQUERED COLOURS



## HIGH GLOSS LACQUERED COLORS



L01 Gesso



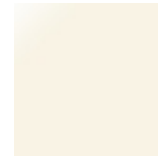
L8B Caolino



L9G Ostrica

L6B Grigio  
Pietra

L14 Nero



L02 Talco



L9F Sand



L4G Argilla

L8C  
CappuccinoL5B Grigio  
Lava

L72 Sabbia



L8A Beige



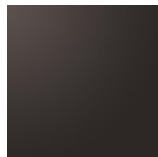
L9T Toffee



L93 Melange



L13 Sepia



L09 Wengè



L98 Oliva



L8S Giallo



L9B Senape



L94 Marsala



L81 Fuoco



L95 Ruggine



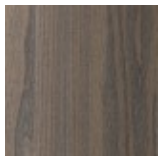
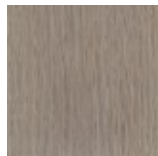
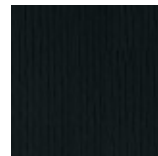
L9H Petrolio

L9E Deep  
Blu

## MATT VENEERS



66 Tabacco

53 Olmo  
grey50 Rovere  
cenere52 Rovere  
fumé

51 Oak Black

# SIDE PANEL / BACK PANEL INSERTS FINISHINGS

## MATT LACQUERED COLOURS



MATT LACQUERED ANTIQUE BRASS COLOURS



7R Ottone  
Anticato



5R Dark  
Bronze  
Anticato



6R Graphite  
Anticato

VARNISHED GLASS



01 Gesso



8B Caolino



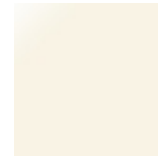
9G Ostrica



6B Grigio  
Pietra



14 Nero



02 Talco



9F Sand



4G Argilla



8C  
Cappuccino



5B Grigio  
Lava



72 Sabbia



8A Beige



9T Toffee



93 Melange



13 Sepia



09 Wengè



98 Oliva



8S Giallo



9B Senape



94 Marsala



81 Fuoco



95 Ruggine



9H Petrolio

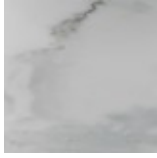


9E Deep Blu

## TECNO-MARBLE



T01  
Calacatta  
Smooth Vena  
grigia



T02  
Calacatta  
Oro



# ALUMINIUM SHELF FINISHINGS

## METALS



537  
Verniciato  
Ottone  
anticato



536  
Verniciato  
Graphite  
anticato



535  
Verniciato  
Dark Bronze  
anticato

## SMOOTH LEATHERS



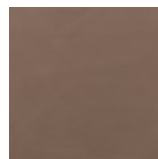
H30 Gesso



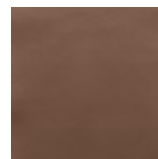
H38 Sand



H36  
Camoscio



H32 Acacia



H31  
Naturale



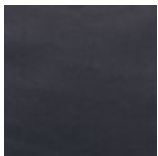
H37  
Marmotta



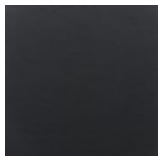
H71 Testa di  
Moro



H35 Grigio  
Chiaro



H40 Blu  
Notte



H73 Nero

# DRAWER FINISHINGS

## MATT LACQUERED COLOURS



MATT LACQUERED ANTIQUE BRASS COLOURS



7R Ottone  
Anticato



5R Dark  
Bronze  
Anticato



6R Graphite  
Anticato

VARNISHED GLASS



01 Gesso



8B Caolino



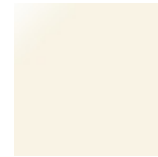
9G Ostrica



6B Grigio  
Pietra



14 Nero



02 Talco



9F Sand



4G Argilla



8C  
Cappuccino



5B Grigio  
Lava



72 Sabbia



8A Beige



9T Toffee



93 Melange



13 Sepia



09 Wengè



98 Oliva



8S Giallo



9B Senape



94 Marsala



81 Fuoco



95 Ruggine



9H Petrolio

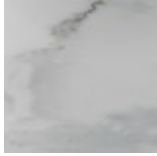


9E Deep Blu

## TECNO-MARBLE



T01  
Calacatta  
Smooth Vena  
grigia



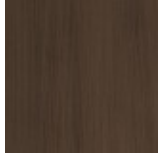
T02  
Calacatta  
Oro

# DOORS FINISHINGS

## MATT LACQUERED COLOURS



## MATT LACQUERED ANTIQUE BRASS COLOURS

7R Ottone  
Anticato5R Dark  
Bronze  
Anticato6R Graphite  
Anticato

## VARNISHED GLASS



01 Gesso



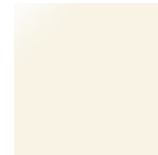
8B Caolino



9G Ostrica

6B Grigio  
Pietra

14 Nero



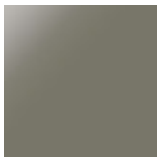
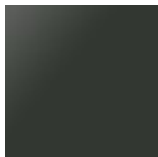
02 Talco



9F Sand



4G Argilla

8C  
Cappuccino5B Grigio  
Lava

72 Sabbia



8A Beige



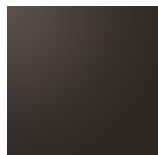
9T Toffee



93 Melange



13 Sepia



09 Wengè



98 Oliva



8S Giallo



9B Senape



94 Marsala



81 Fuoco



95 Ruggine



9H Petrolio

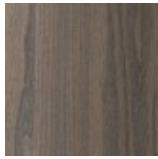


9E Deep Blu

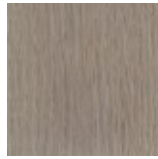
## MATT VENEERS



66 Tabacco



53 Olmo  
grey



50 Rovere  
cenere

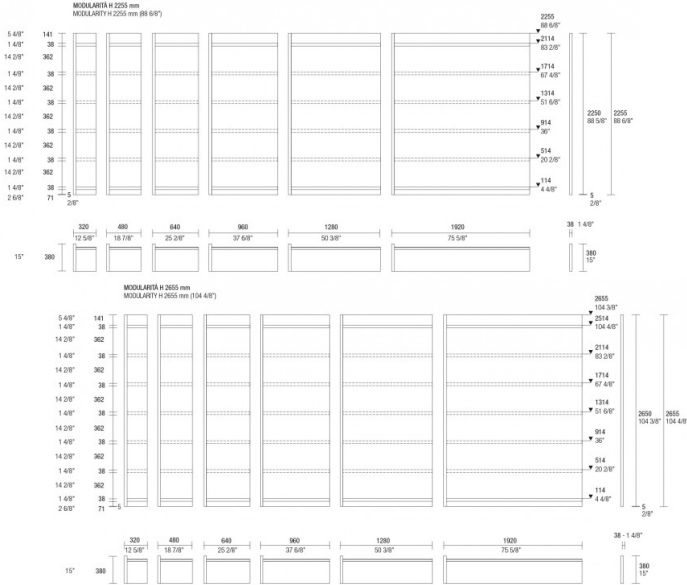


52 Rovere  
fumé

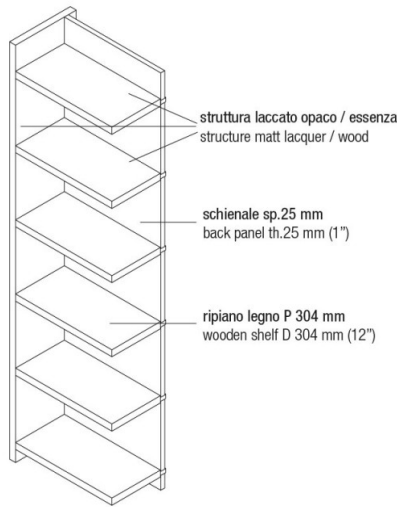


51 Oak Black

# DIMENSIONS

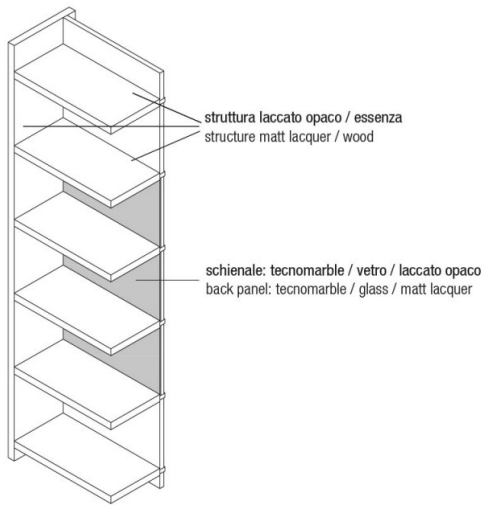


**MODULO SENZA INSERTI**  
UNIT WITHOUT INSERTS

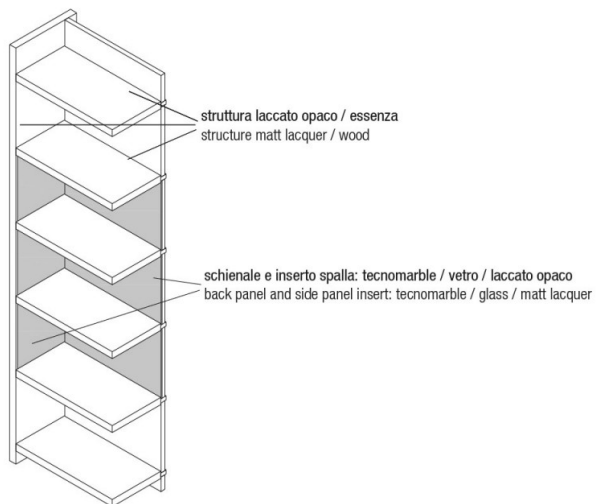




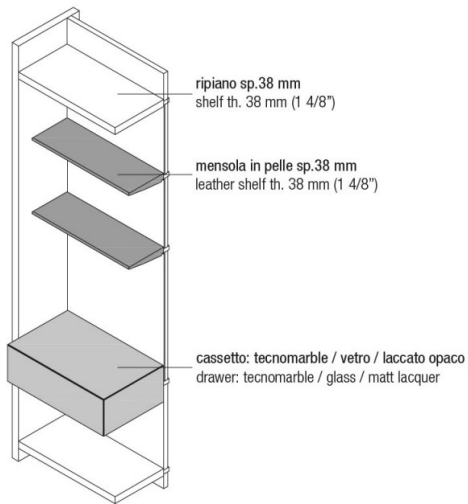
MODULO CON SCHIENALE ACCOPPIATO  
UNIT WITH BACK PANEL INSERT



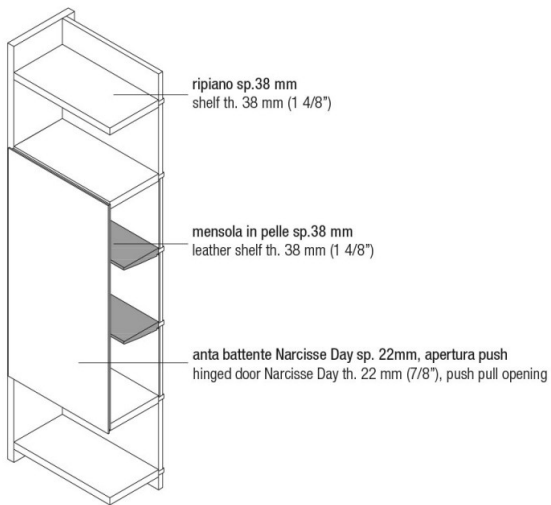
MODULO CON SCHIENALE ACCOPPIATO E INSERTO SULLA SPALLA  
UNIT WITH BACK PANEL AND SIDE PANEL INSERTS



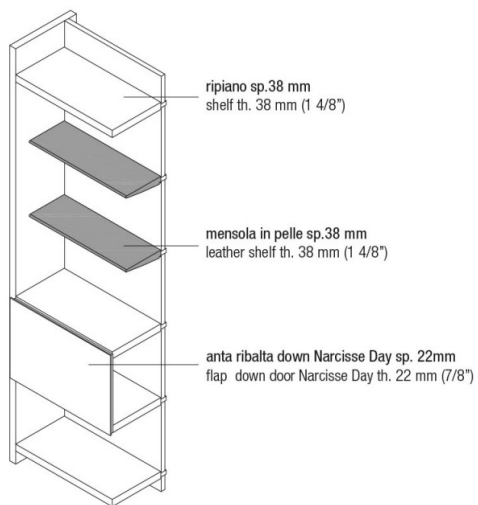
MODULO CON CASSETTO  
UNIT WITH DRAWER



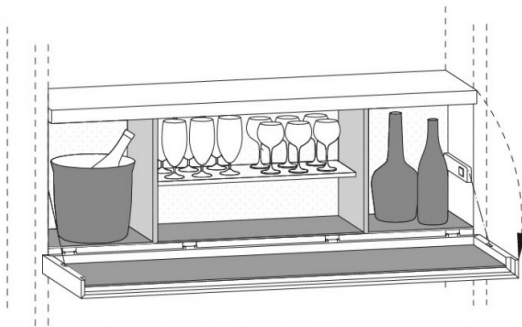
MODULO CON ANTA BATTENTE  
UNIT WITH HANGING DOOR



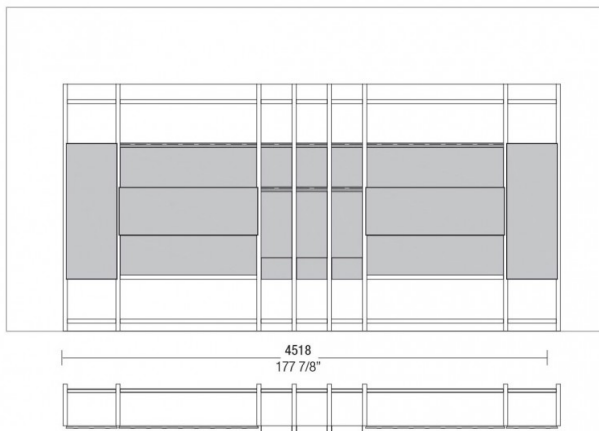
**MODULO CON ANTA RIBALTA DOWN**  
UNIT WITH FLAP DOWN DOOR



**ATTREZZATURA BAR PER ANTA RIBALTA DOWN**  
ACCESSORIES FOR FLAP DOWN BAR UNIT



Esempio composizione / Composition example  
Over H 2255mm / H 88 6/8"



Esempio composizione / Composition example  
Over H 2655mm / H 104 4/8"

