

SUPERHELLA

MAURO LIPPARINI



MisuraEmme®

*A chrome-plated metal structure is a nod to **Superhella's** stunning combination of the past and the future, a characteristic that makes it a perennial classic. There is a bold fluidity to the seat pad, which sits atop the sleek, metal base and is framed by slender armrests in black leather. In short, Superhella is a cosy refuge for you to recharge your batteries.*

TYPE / ARMCHAIRS

TECHNICAL DESCRIPTION

Armchair with structure cold foamed polyurethane frame, structure in chromed metal, armrests in black thick leather. Seat covered in fabric, ecoleather or leather.



DESIGNER

MAURO LIPPARINI

Mauro Lipparini earned a degree in Architecture in 1980 from Università degli Studi of Florence, where he also worked as a professor. He won the international design contests Young & Designer Milan (1987) and International Du Pont Award Köln (Germany, 1988 and 1989). Lipparini's intense activity in the field of industrial design covers office and home furniture, the textile industry and other products created for many companies in Europe and Japan. In architecture and interior design, Lipparini has concentrated mainly on private and public housing, on showrooms, retail sales outlets and exposition installations. Furthermore, Lipparini also designs and realizes advanced corporate identity image systems that range from graphics to editorial services to production. Lipparini's style is based on the essential shapes and the clear and decisive lines that are characteristic of natural minimalism. His creations are imbued with a joyful spirit and with an elating sense of aesthetic pleasure and creativity. Thanks to his free use of color, organic weave patterns and original visual ideas, Lipparini amplifies the palette of minimalism, conveying the spontaneity and power of this aesthetic style and projecting it towards a new era of great maturity and wellbeing.



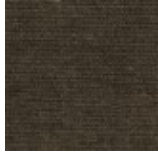
MisuraEmme®

COVER FINISHINGS

FABRICS



A_AS1 Saari



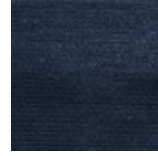
A_AS2 Saari



A_AS4 Saari



A_AS5 Saari



A_AS7 Saari



B_CAE Cocò



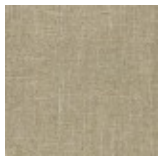
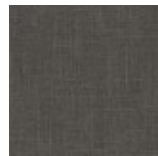
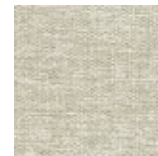
B_CAM Cocò



B_CAK Cocò



B_CAF Cocò

B_BC1
BuranaB_BC3
BuranaB_BC4
BuranaB_BC6
Burana

C_C10 Star



C_C11 Star



C_C17 Star



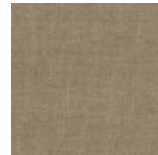
C_C16 Star



C_C18 Star



C_C15 Star

D_D91
PanamaD_D92
PanamaD_D93
PanamaD_D94
PanamaD_D95
PanamaD_D98
Panama

D_i71 Clou



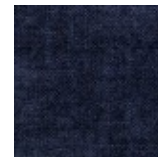
D_i74 Clou



D_i79 Clou



D_i72 Clou



D_i78 Clou

D_D01
UbyeD_D03
Ubye

MisuraEmme®



D_D05
Ubaye



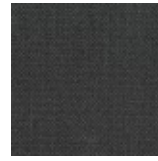
E_E20 Mood



E_E25 Mood



E_E22 Mood



E_E26 Mood



E_E27 Mood



E_E21 Mood



E_E28 Mood



E_E51 Lido



E_E52 Lido



E_E54 Lido



F_E50 Luxus



F_F01 Luxus



F_F02 Luxus



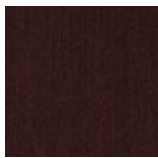
F_F03 Luxus



F_F05 Luxus



F_F11 Lama



F_F14 Lama



F_F12 Lama



F_F15 Lama



F_F25
Gaucho



F_F21
Gaucho



F_F23
Gaucho



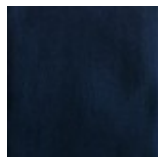
F_F24
Gaucho



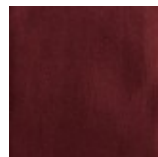
F_F33 Velvet



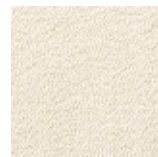
F_F35 Velvet



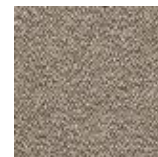
F_F32 Velvet



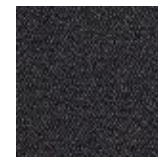
F_EM5
Velvet



H_H42 Sera



H_H44 Sera



H_H47 Sera



H_H48 Sera



H_H50
Opera

H_H53
Opera

H_H55
Opera

H_H56
Opera

SMOOTH LEATHERS



H30 Gesso

H38 Sand

H36
Camoscio

H32 Acacia

H31
Naturale

H37
Marmotta

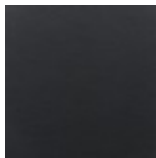
H71 Testa di
Moro



H35 Grigio
Chiaro



H40 Blu
Notte

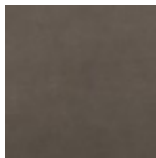


H73 Nero

NUBUCK

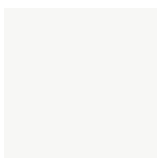


HN2
Carbone



HN3 Grigio

SMOOTH ECO-LEATHERS



C_CE1



C_CD3



C_CF6



C_CD1

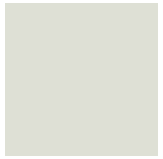


C_CD4



C_CD5

EMBOSSED ECO-LEATHERS



C_CE3



C_CE5



C_CL1



C_CL3



C_CL7



C_CL8



C_CL6

STRUCTURE FINISHINGS

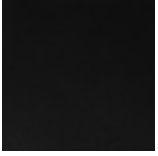
METALS



501 Cromo
naturale

ARMREST FINISHINGS

THICK LEATHER



K06 Nero

DIMENSIONS

Fixed armchair

