

URBAN

IRIAM BETTERA



The **Urban** system expands the creative possibilities starting from the choice of a freestanding or a wall-mounted composition, to the finishes range, up to the selection and placement of various featuring elements: colored metal boxes, storage units with flap door or fitted with drawer, tv panels, equipped with LED system, and glass sliding doors.

TYPE / SYSTEMS

TECHNICAL DESCRIPTION

Bookcase modules made of horizontal shelves in 20 lengths, with 120 mm pitch and interrupted by metal boxes or by insertion side panels, in 2 heights. Two-sided compositions or wall-mounted solutions can be created, and completed by inserting containers, flap doors or drawers, or TV panels.

Structure

Wood particleboard panel th.22mm with melamine facing or lacquered finish.

Metal boxes

Metal with an epoxy enamel finish.

Insertion side panels

Wood particleboard panel Th.22mm with melamine facing or lacquered finish.

Containers

Wood particleboard th.19mm with melamine facing.

Wood fronts

Fronts th.19mm. flush with the bookcase: wood particleboard panel, th.19mm, in lacquered finish or wood veneer.

Front panel with rebate on 3 sides: MDF panel th.19mm in lacquered finish.

"Narcisse day" flap doors

Metal frame th.22mm and dedicated handle in gun metal finish, tempered glass.

MisuraEmme®

Sliding doors in glass

Tempered glass th.6mm. The door can slide even in front of the containers inserted in the bookcase.

Upper/lower track of sliding door

Applied at the edge of the shelves, they contain the sliders and the open/close system's shock absorbers. All electrical systems are provided pre-wired in compliance with current laws.

BIFACCIALE
DOUBLE SIDE



DESIGNER

IRIAM BETTERA

Iriam Bettera was born in Clusone in 1960. Terminated his studies and he makes a short experience cooperating with a research and projects group to then open his own office where in 1990, a part from design, works in the residential and commercial architecture, dedicating himself also to projects of commercial spaces, fairs and hotels both in Italy as well as abroad. He operates also in the graphic field, packaging and communication. He feels that to design is assigned a social role which is to make the quality of life better through the creation of objects, easily replicable industrially, safe, sustainable, obviously beautiful but most of all usable even in an everyday life. This vision produces numerous collaborations with companies of various sectors: furniture and complements, electrical household appliances and electrical medical appliances, free time, urban furnishing, early childhood, fashion accessories, watches and accessories. He is in charge of architectonic projects and works on lay-outs of several furniture shops in Italy, as a consultant. He is committed as an interior designer in important projects in Italy and abroad.



MisuraEmme®

STRUCTURE / INSERTION SIDE PANELS FINISHINGS

MATT LACQUERED COLOURS



MELAMINE



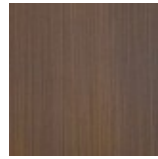
866 Cenere



853 Tabacco



841 Metallic
Champagne



842 Metallic
Dark Bronze



840 Metallic
Graphite

METAL BOX FINISHINGS

MATT LACQUERED COLOURS



MATT LACQUERED ANTIQUE BRASS COLOURS



7R Ottone
Anticato



5R Dark
Bronze
Anticato



6R Graphite
Anticato

CONTAINER FINISHINGS

MELAMINE



877

Ambience

WOODEN FRONT FINISHINGS

MATT LACQUERED COLOURS



HIGH GLOSS LACQUERED COLORS



L01 Gesso



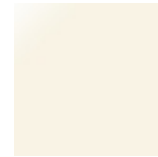
L8B Caolino



L9G Ostrica

L6B Grigio
Pietra

L14 Nero



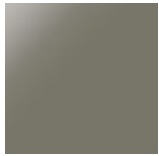
L02 Talco



L9F Sand



L4G Argilla

L8C
CappuccinoL5B Grigio
Lava

L72 Sabbia



L8A Beige



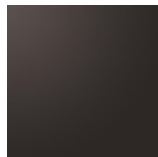
L9T Toffee



L93 Melange



L13 Sepia



L09 Wengè



L98 Oliva



L8S Giallo



L9B Senape



L94 Marsala



L81 Fuoco



L95 Ruggine



L9H Petrolio

L9E Deep
Blu

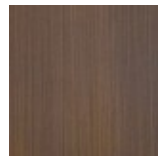
MELAMINE



866 Cenere



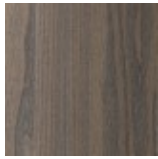
853 Tabacco

841 Metallic
Champagne842 Metallic
Dark Bronze840 Metallic
Graphite

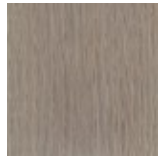
MATT VENEERS



66 Tabacco



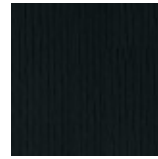
53 Olmo
grey



50 Rovere
cenere



52 Rovere
fumé



51 Oak Black



62 Ebano



54 Eucalipto

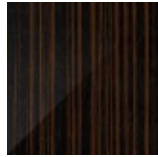
GLOSSY VENEERS



L53 Olmo
Grey



L51 Rovere
Nero



L62 Ebano



L54
Eucalipto

NARCISSE DAY DOOR FINISHINGS

VARNISHED GLASS



01 Gesso

8B Caolino

9G Ostrica

6B Grigio
Pietra

14 Nero

02 Talco

9F Sand



4G Argilla

8C
Cappuccino5B Grigio
Lava

72 Sabbia

8A Beige

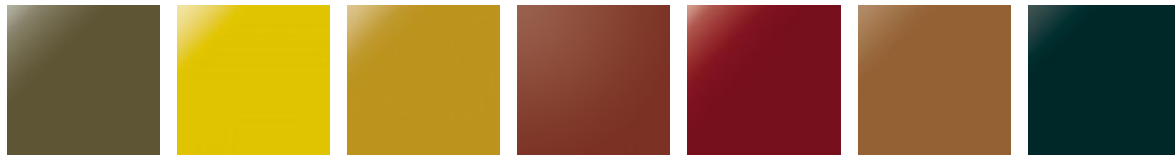
9T Toffee

93 Melange

13 Sepia



09 Wengè



98 Oliva

8S Giallo

9B Senape

94 Marsala

81 Fuoco

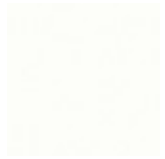
95 Ruggine

9H Petrolio

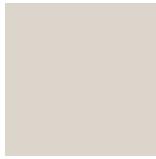


9E Deep Blu

FROSTED VARNISHED GLASS



01 Gesso



8B Caolino



9G Ostrica

6B Grigio
Pietra

14 Nero



02 Talco



9F Sand



4G Argilla

8C
Cappuccino5B Grigio
Lava

72 Sabbia



8A Beige



9T Toffee



93 Melange



13 Sepia



09 Wengè



98 Oliva



8S Giallo



9B Senape



94 Marsala



81 Fuoco



95 Ruggine

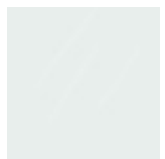


9H Petrolio



9E Deep Blu

TRANSPARENT GLASS

V00
Naturale

V05 Fumé



V01 Bronzo

REFLECTING GLASS



V18
Naturale



V04 Fumé



V03 Bronzo

SLIDING DOORS FINISHINGS

VARNISHED GLASS



01 Gesso



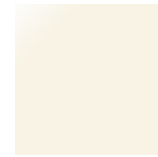
8B Caolino



9G Ostrica

6B Grigio
Pietra

14 Nero



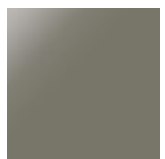
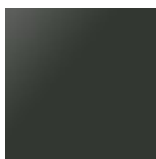
02 Talco



9F Sand



4G Argilla

8C
Cappuccino5B Grigio
Lava

72 Sabbia



8A Beige



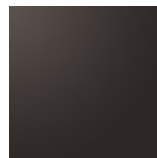
9T Toffee



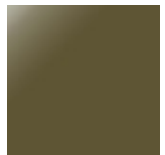
93 Melange



13 Sepia



09 Wengè



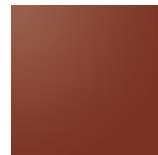
98 Oliva



8S Giallo



9B Senape



94 Marsala



81 Fuoco



95 Ruggine



9H Petrolio

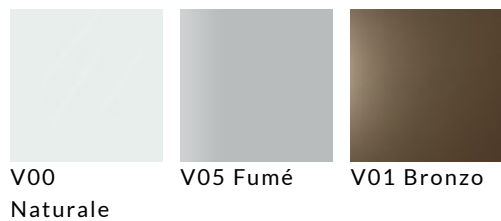


9E Deep Blu

FROSTED VARNISHED GLASS



TRANSPARENT GLASS



REFLECTING GLASS



V18
Naturale



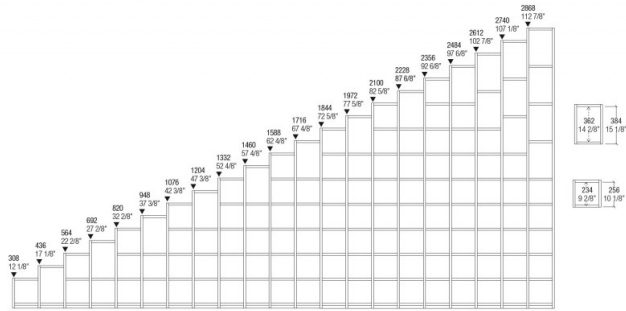
V04 Fumé



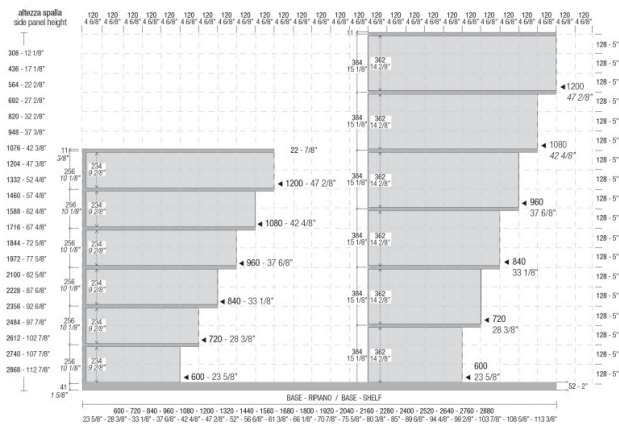
V03 Bronzo

DIMENSIONS

MODULARITÀ IN ALTEZZA / HIGH MODULARITY

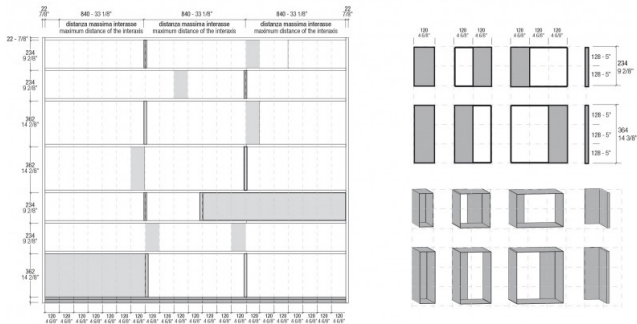


GRIGLIA DI SISTEMA / GRID SYSTEM



REGOLE DI COMPLEMENTARITÀ / COMPOSITION RULES

Posizionamento scatole e spallette per l'inserimento in griglia / Examples of use, of how the boxes and risers must be "placed" to be entered in the grid



CONTENTORI / CONTAINERS

Contentore frontale a "FILO LIBRERIA":
anta ribalta down e cassetto
Container with front "FLUSH TO THE BOOKCASE":
flap down and drawer

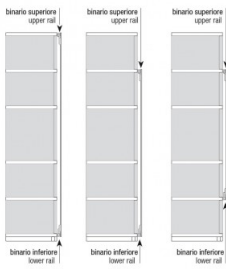


Contentore frontale "BATTUTA 3 LATI":
anta ribalta down e cassetto no apertura push
Container with front "WITH DOOR STOP ON 3 SIDES":
flap down and drawer (no open push)

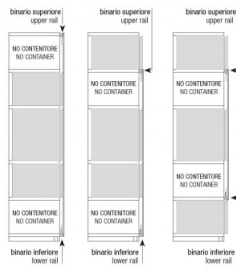


SCHEMA DI UTILIZZO CON ANTE SCORREVOLI / DIAGRAM ON THE USE OF CONTAINERS WITH SLIDING DOORS

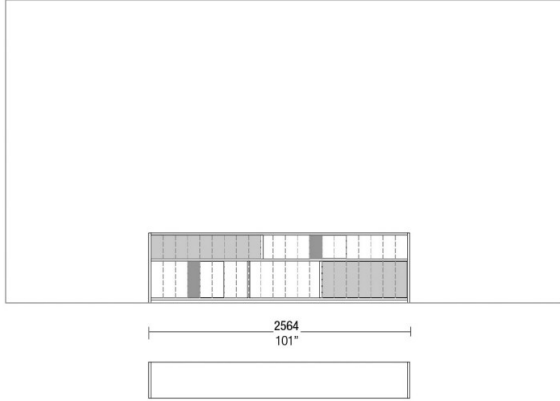
Contenitore con frontale "A FILO LIBRERIA"
Container with front panel "ALIGNED TO THE BOOKCASE"



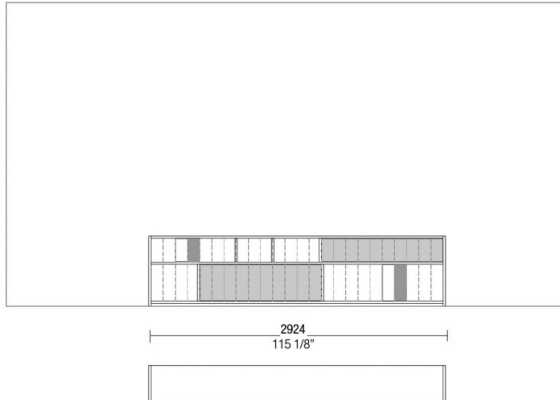
Contenitore avanzato per frontale "CON BATTUTA 3 LATI"
Container with external front "WITH REBATE ON 3 SIDES"



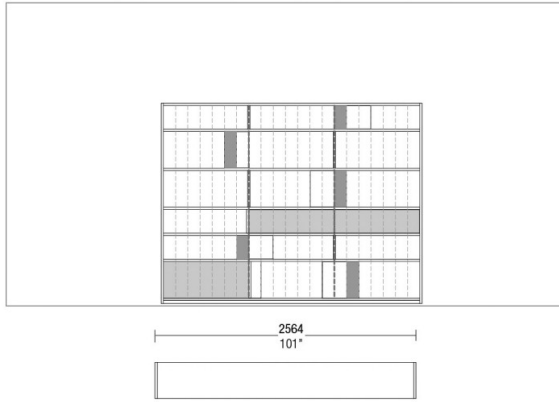
Esempio composizione / Composition example
Urban UBN001-17



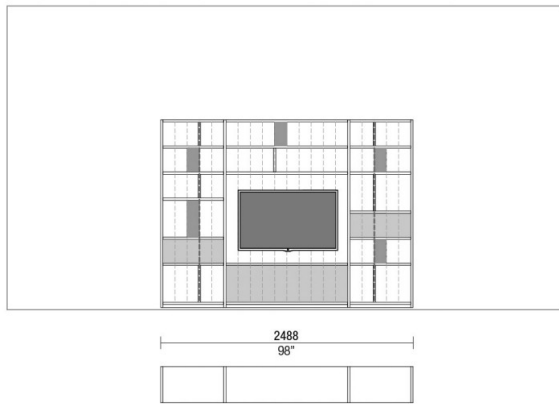
Esempio composizione / Composition example
Urban UBN002-17



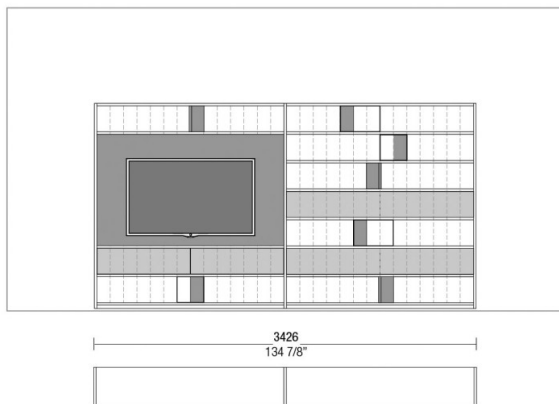
Esempio composizione / Composition example
Urban UBN007-17



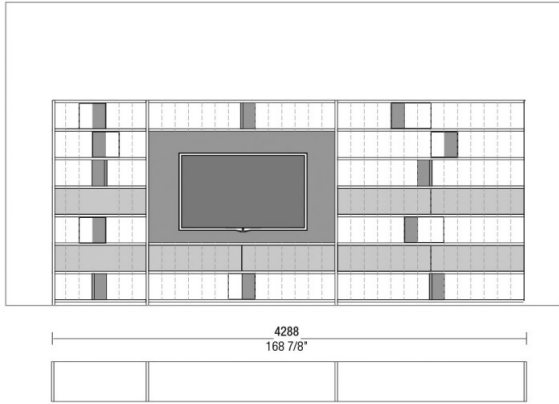
Esempio composizione / Composition example
Urban UBN005-17



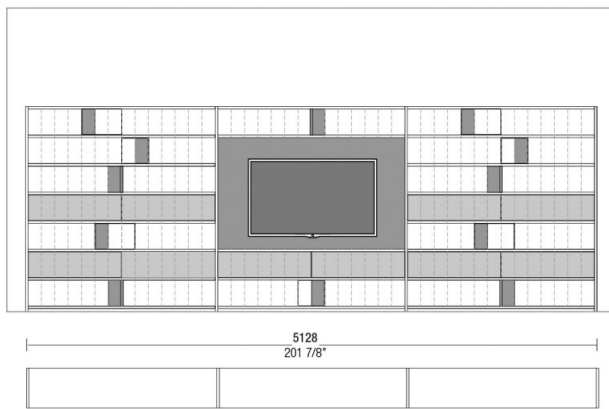
Esempio composizione / Composition example
Urban UBN009A-17



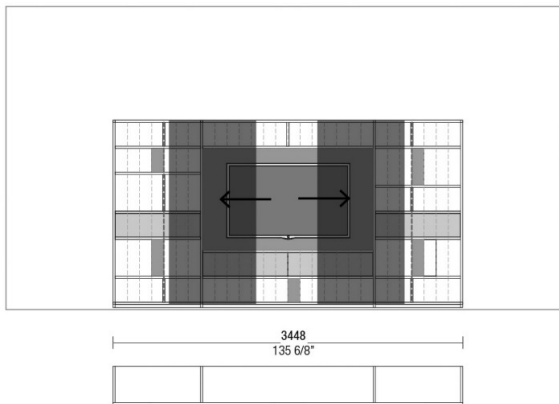
Esempio composizione / Composition example
Urban UBN009B-17



Esempio composizione / Composition example
Urban UBN009C-15



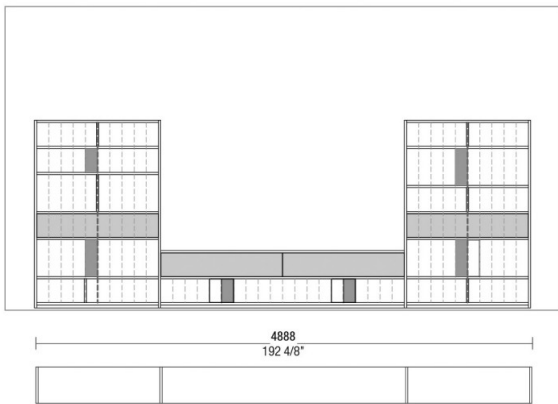
Esempio composizione / Composition example
Urban UBN0010-17



Esempio composizione / Composition example
Urban UBN0013-17



Esempio composizione / Composition example
Urban UBN0014-17



Esempio composizione / Composition example
Urban UBN0015-17

