

VIRGIN DINING CHAIR

MAURO LIPPARINI



A refined game of balances sets the Virgin dining chair apart, thanks to the creative flair of Mauro Lipparini. Available in two versions, with or without armrests, the model relies on striking architectural allure. The rear support becomes a pillar resting on the floor, upholstered and covered, in contrast with the slim frontal metal legs. The contemporary tone suggests the soft lines of the Fifties.

TYPE / CHAIRS

TECHNICAL DESCRIPTION

Collection composed by sofas, chairs and armchairs with or without armrests. The feature of the whole collection is its softness as a result of an elegant and tailored recover of soft lines typical of the fifties. It also provides a thin armrest section, an elliptical recover in the sofa seat. A contrast between smooth and rough, between the linear frontal feet and those rough and relaxing back once.

In the armrests version is available the bicolor variant with different finishings for both the front upholstery and the back one.

MisuraEmme®



DESIGNER

MAURO LIPPARINI

Mauro Lipparini earned a degree in Architecture in 1980 from Università degli Studi of Florence, where he also worked as a professor. He won the international design contests Young & Designer Milan (1987) and International Du Pont Award Köln (Germany, 1988 and 1989). Lipparini's intense activity in the field of industrial design covers office and home furniture, the textile industry and other products created for many companies in Europe and Japan. In architecture and interior design, Lipparini has concentrated mainly on private and public housing, on showrooms, retail sales outlets and exposition installations. Furthermore, Lipparini also designs and realizes advanced corporate identity image systems that range from graphics to editorial services to production. Lipparini's style is based on the essential shapes and the clear and decisive lines that are characteristic of natural minimalism. His creations are imbued with a joyful spirit and with an elating sense of aesthetic pleasure and creativity. Thanks to his free use of color, organic weave patterns and original visual ideas, Lipparini amplifies the palette of minimalism, conveying the spontaneity and power of this aesthetic style and projecting it towards a new era of great maturity and wellbeing.



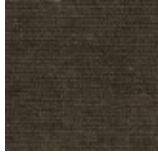
MisuraEmme®

COVER FINISHINGS

FABRICS



A_AS1 Saari



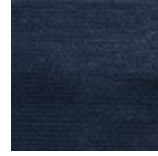
A_AS2 Saari



A_AS4 Saari



A_AS5 Saari



A_AS7 Saari



B_CAE Cocò



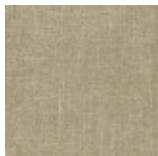
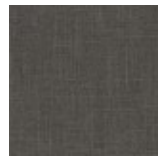
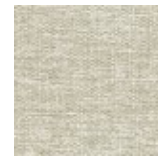
B_CAM Cocò



B_CAK Cocò



B_CAF Cocò

B_BC1
BuranaB_BC3
BuranaB_BC4
BuranaB_BC6
Burana

C_C10 Star



C_C11 Star



C_C17 Star



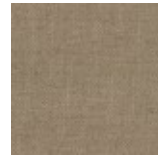
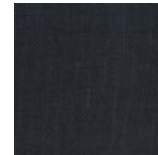
C_C16 Star



C_C18 Star



C_C15 Star

D_D91
PanamaD_D92
PanamaD_D93
PanamaD_D94
PanamaD_D95
PanamaD_D98
Panama

D_i71 Clou



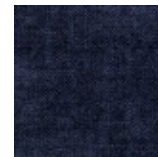
D_i74 Clou



D_i79 Clou



D_i72 Clou



D_i78 Clou

D_D01
UbyeD_D03
Ubye

MisuraEmme®



D_D05
Ubaye



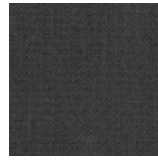
E_E20 Mood



E_E25 Mood



E_E22 Mood



E_E26 Mood



E_E27 Mood



E_E21 Mood



E_E28 Mood



E_E51 Lido



E_E52 Lido



E_E54 Lido



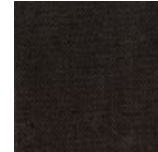
F_E50 Luxus



F_F01 Luxus



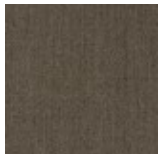
F_F02 Luxus



F_F03 Luxus



F_F05 Luxus



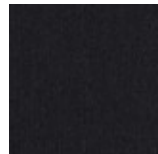
F_F11 Lama



F_F14 Lama



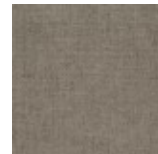
F_F12 Lama



F_F15 Lama



F_F25
Gaucho



F_F21
Gaucho



F_F23
Gaucho



F_F24
Gaucho



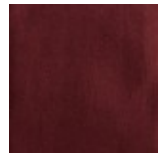
F_F33 Velvet



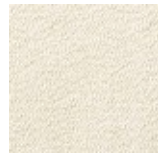
F_F35 Velvet



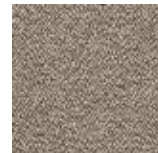
F_F32 Velvet



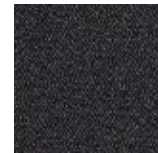
F_EM5
Velvet



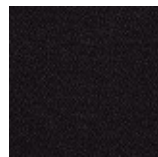
H_H42 Sera



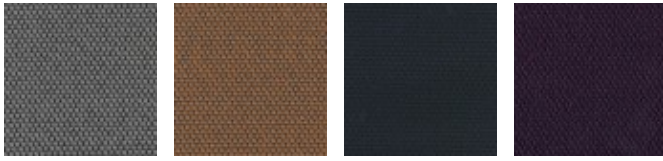
H_H44 Sera



H_H47 Sera



H_H48 Sera



H_H50
Opera

H_H53
Opera

H_H55
Opera

H_H56
Opera

SMOOTH LEATHERS



H30 Gesso

H38 Sand

H36
Camoscio

H32 Acacia

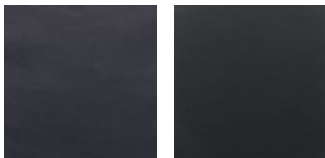
H31
Naturale

H37
Marmotta

H71 Testa di
Moro



H35 Grigio
Chiaro



H40 Blu
Notte

H73 Nero

NUBUCK



HN2
Carbone

HN3 Grigio

SMOOTH ECO-LEATHERS



C_CE1

C_CD3

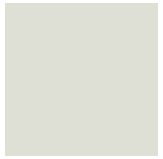
C_CF6

C_CD1

C_CD4

C_CD5

EMBOSSSED ECO-LEATHERS



C_CE3



C_CE5



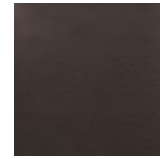
C_CL1



C_CL3



C_CL7



C_CL8



C_CL6

BACK FINISHINGS (BICOLOR VERSION)

SMOOTH LEATHERS



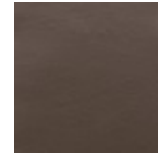
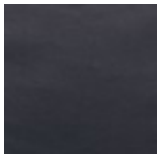
H30 Gesso



H38 Sand

H36
Camoscio

H32 Acacia

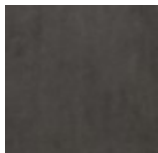
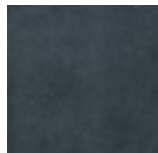
H31
NaturaleH37
MarmottaH71 Testa di
MoroH35 Grigio
ChiaroH40 Blu
Notte

H73 Nero

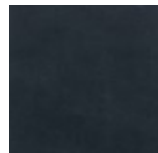
SUEDE LEATHERS



HA6 Neve

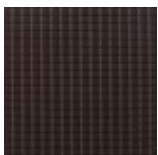
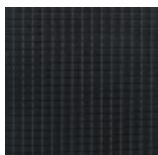
HA5
Marmotta

HA2 Nuvola



HA3 Blu

PRINTED LEATHERS

HV2
Marrone

HV1 Nero

NUBUCK



HN2
Carbone

HN3 Grigio

SMOOTH ECO-LEATHERS



C_CE1

C_CD3

C_CF6

C_CD1

C_CD4

C_CD5

EMBOSSSED ECO-LEATHERS



C_CE3

C_CE5

C_CL1

C_CL3

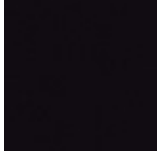
C_CL7

C_CL8

C_CL6

FEET FINISHINGS

METALS



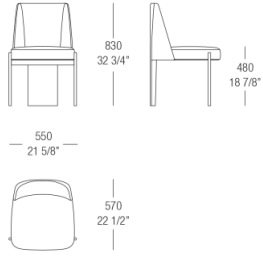
538

Verniciato

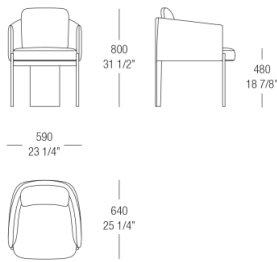
Nero

DIMENSIONS

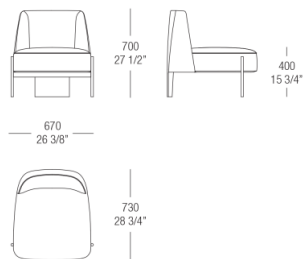
Chair without armrests



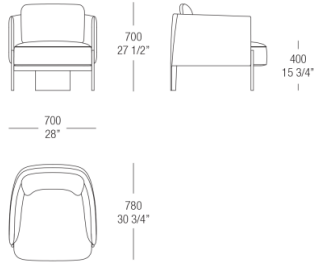
Chair with armrests



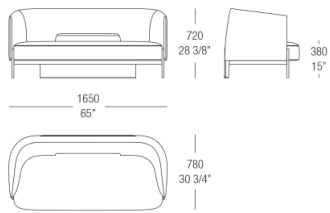
Armchair without armrests



Armchair with armrests



Linear sofa



Round sofa

