

Design by: Marc Sadler



Struttura in metallo ricoperto in vetro, pendagli in cristallo, illuminazione LED.

Metal frame covered with glass, crystal pendants, LED lighting system.

Metallstruktur mit transparentem Glas bedeckt, Kristall-Gehänge, LED Lichtsystem.

Structure métallique recouverte de verre, pendentifs en cristal, éclairage LED

**МЕТАЛЛИЧЕСКИЙ КАРКАС, ПОКРЫТЫЙ СТЕКЛОМ, ПОДВЕСЫ ИЗ ХРУСТАЛЯ, СВЕТОДИОДНОЕ ОСВЕЩЕНИЕ.**



**G03**  
Gold Frame  
Transparent Glass



**V32**  
Red Frame  
Red Glass



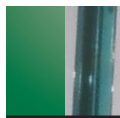
**G03**  
Gold Frame  
Orange Glass



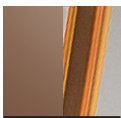
**G04**  
Chrome Frame  
Red Glass



**G14**  
Burnished brass  
Transparent Glass



**V61**  
Green frame  
Green Glass



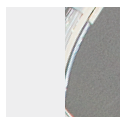
**V82**  
Brown Frame  
Orange Glass



**G04**  
Chrome frame  
Green Glass

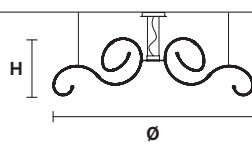


**G04**  
Chrome Frame  
Transparent Glass



**V95**  
White frame  
Transparent Glass

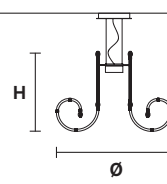
### RAQAM A CE



H 55 cm / 21.65"  
Ø 266 cm / 104.72"

LED x 128 W CRI>80  
3000 K - 13600 lm  
**Dimmable: PUSH+DMX**  
on request

### RAQAM C CE



H 70 cm / 27.55"  
Ø 100 cm / 39.37"

LED x 96 W CRI>80  
3000 K - 10200 lm  
**Dimmable: PUSH+DMX**  
on request

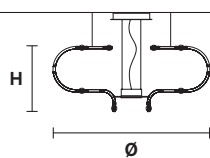
### RAQAM E CE



H 85 cm / 33.46"  
Ø 65 cm / 25.59"

LED x 96 W CRI>80  
3000 K - 10200 lm  
**Dimmable: PUSH+DMX**  
on request

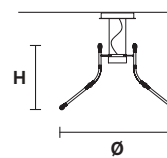
### RAQAM F CE



H 50 cm / 19.68"  
Ø 120 cm / 47.24"

LED x 128 W CRI>80  
3000 K - 13600 lm  
**Dimmable: PUSH+DMX**  
on request

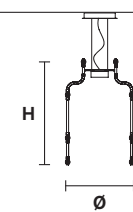
### RAQAM G CE



H 55 cm / 21.65"  
Ø 100 cm / 39.37"

LED x 96 W CRI>80  
3000 K - 10200 lm  
**Dimmable: PUSH+DMX**  
on request

### RAQAM H CE



H 95 cm / 37.40"  
Ø 60 cm / 23.62"

LED x 128 W CRI>80  
3000 K - 13600 lm  
**Dimmable: PUSH+DMX**  
on request

### RAQAM M6 CE



H 200 cm / 78.74"  
Ø 60 cm / 23.62"

LED x 256 W CRI>80  
3000 K - 27200 lm  
**Dimmable: PUSH+DMX**  
on request