



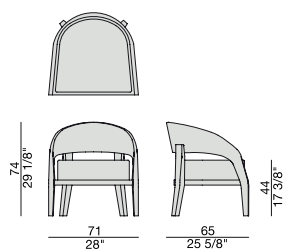
Poltrona con struttura in massello di noce canaletta o frassino e rivestimento nei tessuti della collezione.

Easy chair with frame in solid canaletta walnut or ash and cover in the fabrics of the collection.

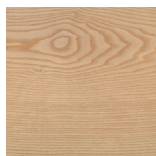
Sessel mit Gestell aus massivem Nussbaum Canaletta oder Esche und Bezug in den Stoffen der Kollektion.

Fauteuil avec structure en noyer canaletta massif ou frêne et revêtement dans les tissus de la collection.

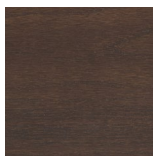
Sillón con estructura en nogal canaletta o fresno macizo y revestimiento en las telas de la colección.



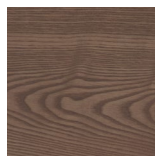
## Essenze | Wood



FRASSINONATURALE  
Natural Ash



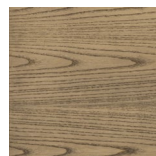
FRASSINO  
Ash  
*tinto/stained moka*



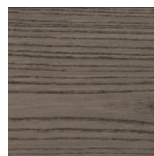
FRASSINO  
Ash  
*tinto/stained canaletta walnut*



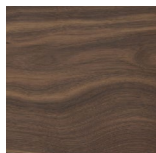
FRASSINO  
Ash  
*tinto/stained wengé*



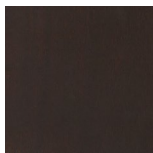
FRASSINO  
Ash  
*tinto/stained canapa*



FRASSINO  
Ash  
*tinto/stained caffè*



NOCE CANALETTA  
Canaletta Walnut

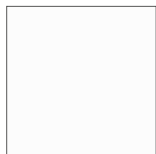


NOCE CANALETTA  
Canaletta Walnut  
*tinto/stained moka*



NOCE CANALETTA  
Canaletta Walnut  
*tinto/stained wengé*

## Laccato opaco poro aperto/chiuso | Matt Lacquered open/closed pore



BIANCO  
White  
(RAL 9016)



AVORIO  
Ivory  
(RAL 1013)



ARGILLA  
Argilla  
(RAL 7006)



PIOMBO  
Piombo  
(NCS S5005G20Y)



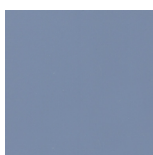
NERO  
Black  
(RAL 9005)



GRANATA  
Granata  
(NCS S4050Y90R)



PISTACCHIO  
Pistacchio  
(PANTONE 5825)



AVIO  
Avio  
(PANTONE 5415)



IRON  
Iron  
(RAL 7011)



CIOCCOLATO  
Chocolate  
(RAL 8019)

## Pelle | Leather

### Cat. LUX



Nabuk

### Cat. PLUS



Pelle PLUS

### Cat. EXTRA



Pelle EXTRA

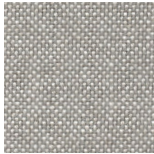
### Cat. PELLE



Pelle

## Rivestimento | Cover

### Cat. A



Hallingdal 65



Hound

### Cat. B



Rabat



Milord

### Cat. C



Armam



Fashion



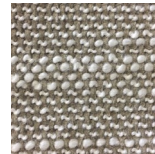
Flax



Ikat



Loom



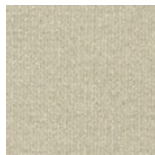
Madras



Moran



Thalys

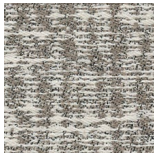


Velvet



Wool

### Cat. D



Astra



Ecopelle



Range



Tress

### Cat. E



Cotone



Dorian



In Bianco/Calico

### Cat. COM

Disponibile con tessuto fornito dal cliente.

Available with fabric supplied by the customer.

Verfügbar mit Kundenstoff.

Disponible avec tissu du client.

Disponible con tela suministrada por el cliente.