

# DOMINO TV

PORTA TV | TV STAND

Design T. Colzani

2007



La colonna è predisposta per il passaggio dei cavi attraverso il piattello fissato al pavimento. I cavi provenienti dalla parete possono entrare nella colonna attraverso i fori posti sulla stessa oppure direttamente attraverso le asole predisposte sulla piastra di ancoraggio del plasma / LCD. Per impedire le torsioni dei cavi di alimentazione la rotazione della colonna è limitata a 30° a destra e 30° a sinistra. Il cliente sotto la sua responsabilità può rimuovere il fermo svitando l'apposita vite posta del piattello a pavimento.

*The post allows the wires to run from the floor through the bottom plate. The wires coming from the wall can be introduced into the post through the holes foreseen on it or on the board for fl at screen (plasma or LCD). The rotation of the TV-stand is blocked at 30° on the right and at 30° on the left to prevent dangerous torsions of the wires. It is final customer responsibility to remove the lock unscrewing the screw located at the bottom plate.*

*Die Säule ist zur Kabeldurchführung vorbereitet die Kabel können vom Boden her durchgeführt werden. Die Kabel aus der Wand können in die Säule durch die Öffnungen die schon vorgebohrt sind oder durch die Öffnung auf der Plasma-Befestigungs-Platte geführt werden. Um Drehungen der Säule zu vermeiden durch die Kabel beschädigt werden können ist der Drehwinkel auf 30° rechts und 30° links begrenzt. Der Anschlag kann durch herausdrehen der Schraube in der Metallscheibe aufgehoben werden wobei dies auf Gefahr*

*La colonne permet le passage des câbles pour la fixation au sol. Les câbles qui sortent du mur peuvent rentrer dans la colonne par les trous prévus sur la colonne même ou par les trous prévus sur le dossier de l'élément d'accrochage du plasma ou LCD. Pour éviter la torsion des câbles la rotation est limitée à 30° à gauche et 30° à droite. Le client peut sous sa responsabilité retirer le bloqué en dévissant la vis prévue sur l'élément de fixation au sol.*

*La columna permite el pasaje de los cables de alimentación que suben por el disco fijado al suelo. Los cables de la pared pueden entrar en la columna por los agujeros en la misma o por los agujeros en la base del elemento de fijación para TV de plasma y LCD. Para impedir peligrosas torsiones de los cables de alimentación la rotación del porta TV está limitada a 30° a la derecha y a 30° a la izquierda. Es responsabilidad del cliente en cuanto lo quiera quitar el bloqueo desenroscando un tornillo en el disco fijado al suelo.*



# DOMINO TV

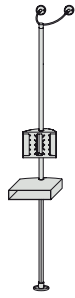
Design T. Colzani

COMPOSIZIONI | COMPOSITIONS

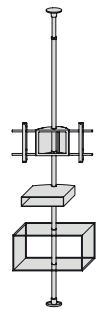
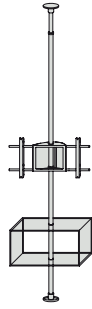
2007



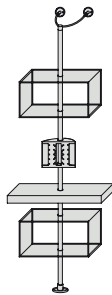
COMP. A



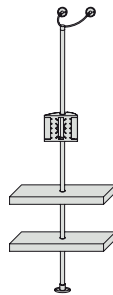
COMP. B



COMP. D



COMP. E



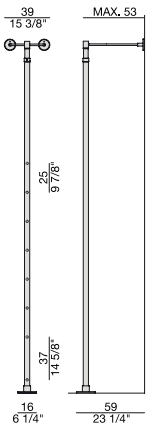
COMP. F

# DOMINO TV

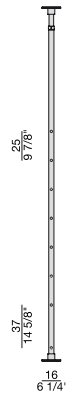
Design T. Colzani

COMPONENTI | ELEMENTS

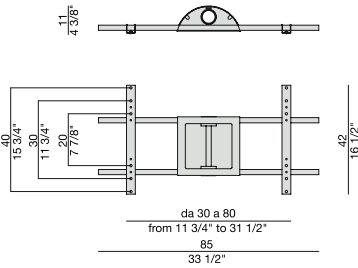
2007



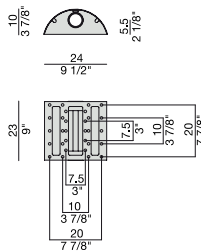
**COLONNA A PARETE**  
*Column fixed to the wall*



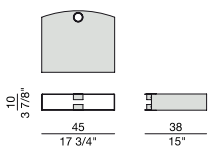
**COLONNA A SOFFITTO**  
*Ceiling column*



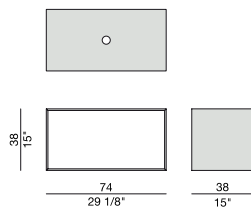
**PIASTRA 2**  
*Metal board 2*



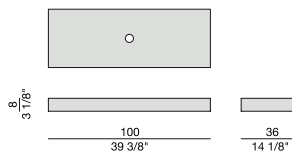
**PIASTRA 1**  
*Metal board 1*



**PORTA DECODER**  
*Decoder holder*

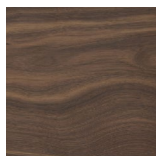


**CONTENITORE GIREVOLE**  
*Revolving container*

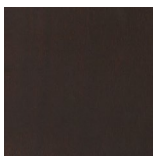


**MENSOLA CENTRALE**  
*Shelf*

## Essenze | Wood



NOCE CANALETTA  
Canaletta Walnut



NOCE CANALETTA  
Canaletta Walnut  
tinto/stained moka



NOCE CANALETTA  
Canaletta Walnut  
tinto/stained wengé

## Laccato opaco poro chiuso | Matt Lacquered closed pore



BIANCO  
White  
(RAL 9016)



AVORIO  
Ivory  
(RAL 1013)



ARGILLA  
Argilla  
(RAL 7006)



PIOMBO  
Piombo  
(NCS S5005G20Y)



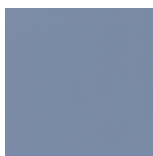
NERO  
Black  
(RAL 9005)



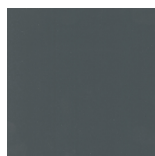
GRANATA  
Granata  
(NCS S4050Y90R)



PISTACCHIO  
Pistacchio  
(PANTONE 5825)



AVIO  
Avio  
(PANTONE 5415)



IRON  
Iron  
(RAL 7011)



CIOCCOLATO  
Chocolate  
(RAL 8019)

## Cristallo | Glass



TRASPARENTE  
Transparent



FUMÉ  
Smoked

## Metallo | Metal



BRONZORO