

design — Alexander Lorenz



Bon Bon, 770/TG-R
tavolo \ table

Il disegno a fasce intrecciate delle gambe in metallo caratterizza la famiglia di tavoli e tavolini Bon Bon. A scelta, l'essenziale piano è proposto in vetro o in una preziosa gamma di marmi. All'insegna della versatilità, la base del tavolo può essere modulata a seconda delle dimensioni del piano disponibile nelle versioni tonda e rettangolare.

The interwoven design of the metal legs characterizes the Bon Bon family of tables and coffee tables. Optionally, the top is proposed in glass or in a refined range of marble. In terms of versatility, the base of the table can be modulated according to the size of the top, which is available either in the round and rectangular version.

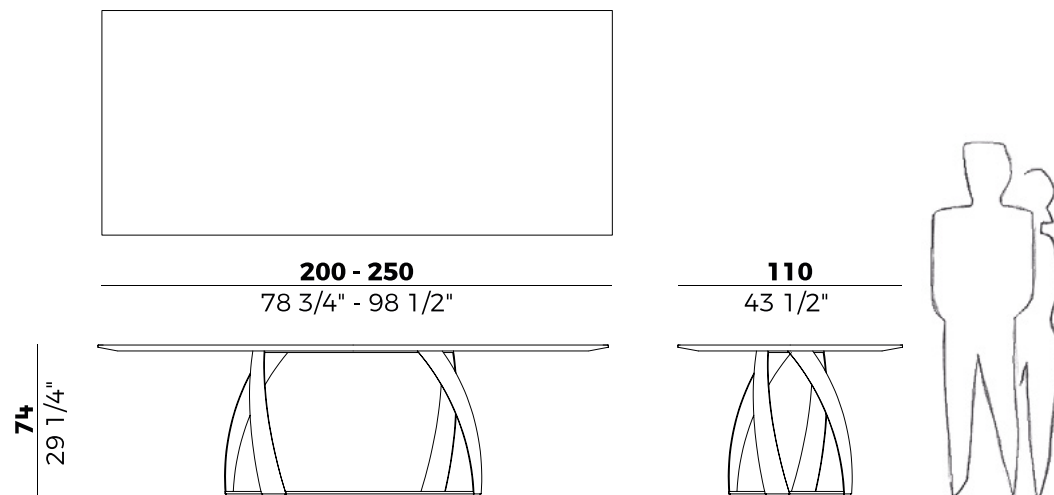
Informazioni tecniche \ *Technical information*


Descrizione tecnica \ *Technical description*


Tavolo con base in metallo allungata e piano tondo in marmo.
La cornice del piano è in rovere.
Finiture di collezione.

*Table with elongated metal base and round marble top.
Oak top frame.
Finishes as per collection.*

Dimensioni \ *Dimensions*



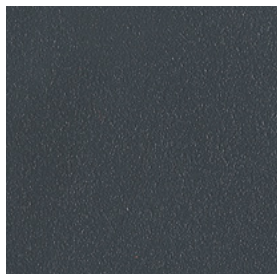
	200x110
	glass - 2 crt = m ³ 1.10
	marble - 2 crt = m ³ 3.30
	gross weight glass - Kg 173
	gross weight marble - Kg 300

	250x110
	glass - 2 crt = m ³ 1.20
	marble - 2 crt = m ³ 3.80
	gross weight glass - Kg 207
	gross weight marble - Kg 360

Finiture \ *Finishes*

Finiture base \ *Base finishes*

Metallo \ *Metal*



Verniciato Antracite Goffrato \
Anthracite Embossed Lacquered



Verniciato Aval Goffrato \
Aval Embossed Lacquered



Verniciato Oro \
Gold Lacquered



Ottone Brunito \
Bronzed Brass



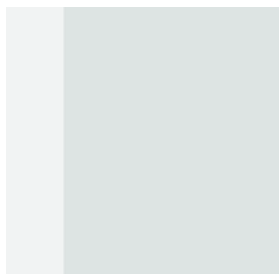
Corten \
Corten

Finiture \ *Finishes*

Finiture piano \

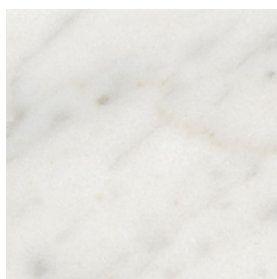
Top finishes

Vetro \ *Glass*



Vetro float trasparente \
Transparent float glass

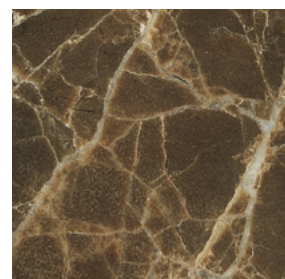
Marmo \ *Marble*



Bianco Carrara Opaco \
Matt White Carrara



Bianco Carrara Lucido \
Glossy White Carrara



Dark Emperador \
Dark Emperador



Sahara Noir \
Sahara Noir



Iron Silver \
Iron Silver

Disponibile solo nella misura
200x110 cm
Available only for size
200x110 cm - 78 3/4 x 43
1/2"

**Collezione Bon Bon **
Bon Bon collection

Famiglia di tavoli e tavolini con base in metallo.
Tavoli con base tonda disponibili con piano tondo o ovale in marmo o vetro temperato.
Tavolo con base allungata disponibile con piano tondo, ovale o rettangolare in marmo o vetro temperato.
Tavolini con base tonda e piano in marmo o vetro.
Finiture di collezione.

*Family of tables and coffee tables with metal base.
Tables with round base available with round or oval top in marble or tempered glass.
Table with elongated base available with round, oval or rectangular top in marble or tempered glass.
Coffee tables with round base and top in marble or glass.
Finishes as per collection.*

