



**Pocket, 894/TB**  
**tavolino** \ *coffee table*

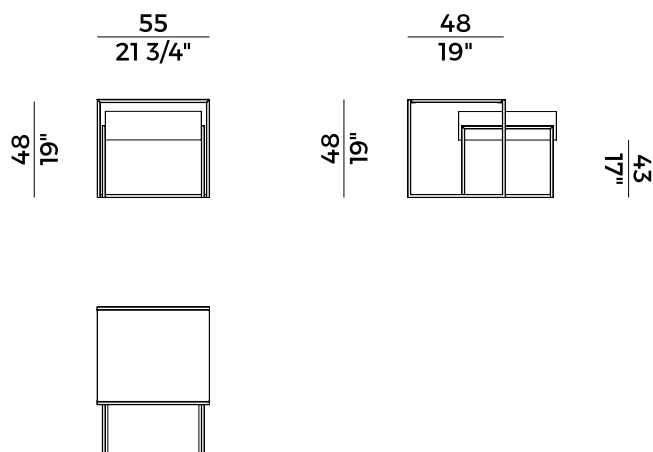
## Informazioni tecniche \ *Technical information*

### Descrizione tecnica \ *Technical description*

Coppia di tavolini con struttura in metallo ottone brunito. Piano superiore laccato nero opaco. Tavolino sottostante, con contenitore aperto, disponibile in frassino o noce Canaletto.

*Pair of coffee tables with bronzed brass metal frame and matt black lacquered top. The table below, with an open case, is available in ash wood or Canaletto walnut.*

### Dimensioni \ *Dimensions*



## Finiture \ *Finishes*

---

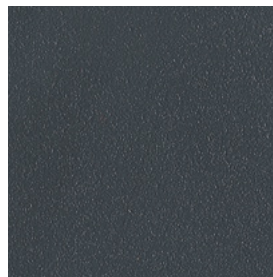
### Finiture struttura \

*Frame finishes*

### Metallo \ *Metal*



Ottone brunito \  
Bronzed Brass

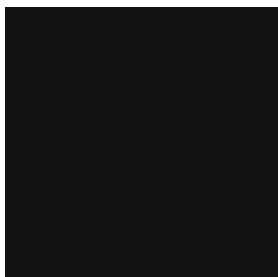


Metallo Antracite Goffrato \  
Metal Embossed Anthracite

### Finiture piano \

*Top finishes*

### Frassino \ *Ash*



Nero Opaco \  
Matt Black

## Finiture \ *Finishes*

### Finiture cassetto \

*Drawer finishes*

### Frassino \ *Ash*



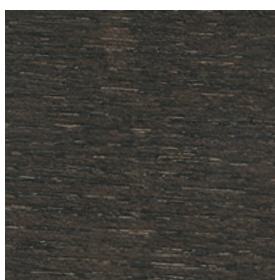
SG  
Anilina Beige \  
Beige Aniline



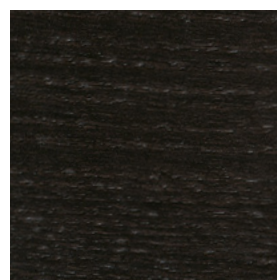
SC  
Biscotto \  
Biscuit



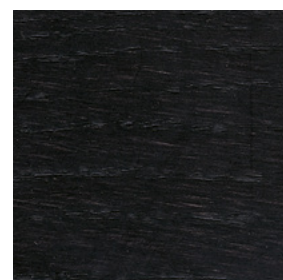
HJ  
Moka \  
Moka



HK  
Grigio Plumbeo \  
Dark Grey

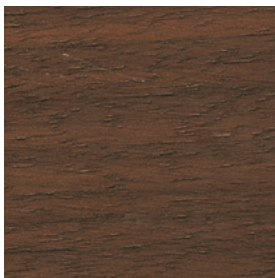


HL  
Wengé \  
Wengé



HP  
Carbone \  
Carbon

### Noce Canaletto \ *Canaletto Walnut*



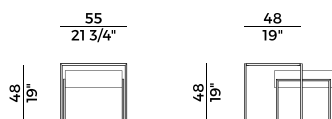
Noce Canaletto Opaco \  
Matt Canaletto Walnut

## Collezione Pocket \

*Pocket collection*

Coppia di tavolini con struttura in metallo ottone brunito. Piano superiore laccato nero opaco. Tavolino sottostante, con contenitore aperto, disponibile in frassino o noce Canaletto.

*Pair of coffee tables with bronzed brass metal frame and matt black lacquered top. The table below, with an open case, is available in ash wood or Canaletto walnut.*



894/TB

*tavolino \ coffee table*