

design — David Lopez Quincoces



**Vigo, 881/L**  
lounge \ lounge armchair

La lounge Vigo reinterpreta il mondo dei grandi safari anni '20/'30 in chiave moderna, lavorando sui tubolari in metallo e sul cuoio pieno fiore, riportando al minimo tutti gli spessori. La leggera seduta accompagna dolcemente il corpo per godere dei momenti di massimo relax.

*The Vigo lounge chair reinterprets the great safari world of the '20s/'30s in a modern key, working on metal tubular frames and full-grain leather, and keeping all the thicknesses to a minimum. The light seat gently accompanies the body to enjoy moments of maximum relaxation.*

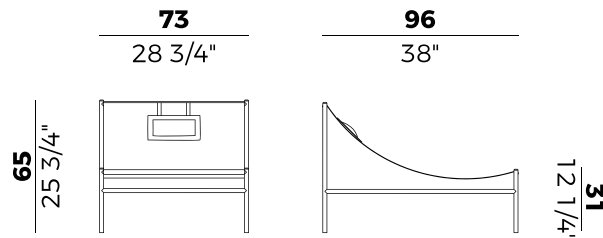
## Informazioni tecniche \ *Technical information*

### Descrizione tecnica \ *Technical description*

Lounge con struttura in tubolare di metallo verniciato con schienale/se-  
duta in cuoio autoportante. Poggiate-  
sta incluso.  
Finiture di collezione.

*Lounge chair with tubular metal  
frame painted with self-supporting  
backrest/seat in saddle leather. Head-  
rest included.  
Finishes as per collection.*

### Dimensioni \ *Dimensions*



#### PACKAGING

1 x crt = m<sup>3</sup> 0.59

gross weight - Kg 14,4

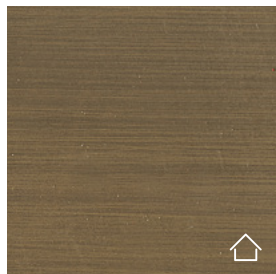
## Finiture \ *Finishes*

---

### Finiture struttura \

*Frame finishes*

### Metallo \ *Metal*

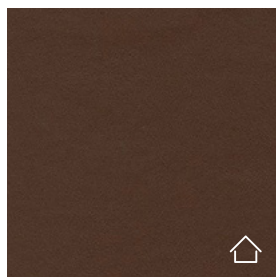


Ottone brunito \  
Bronzed Brass

### Finiture seduta \

*Seat finishes*

### Cuoio \ *Saddle leather*

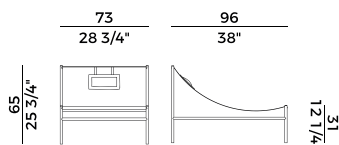


C6A  
Naturale \  
Natural

Collezione Vigo \  
Vigo collection

Lounge con struttura in tubolare di metallo verniciato con schienale/se-  
duta in cuoio autoportante. Poggiate-  
sta incluso.  
Finiture di collezione.

*Lounge chair with tubular metal  
frame painted with self-supporting  
backrest/seat in saddle leather. Head-  
rest included.  
Finishes as per collection.*



881/L  
lounge \ lounge chair