

SKETCH

APPENDIABITI | CLOTHES STAND

Design M. & L. Dainelli

2012



SKETCH

Design M. & L. Dainelli

APPENDIABITI | CLOTHES STAND

2012

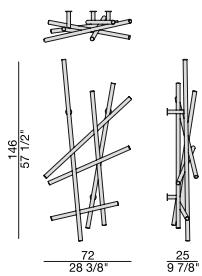
Portabiti da parete in massello di noce canaletta con supporti in metallo.

Wall clothes stand in solid canaletta walnut with metal supports.

Wandskulptur aus massivem Nussbaum Canaletta mit Garderobenhacken aus Metall.

Porte-manteaux en noyer canaletta massif avec supports en métal.

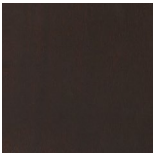
Perchero de pared en nogal canaletta macizo con soporte de metal.



Essenze | Wood



NOCE CANALETTA
Canaletta Walnut

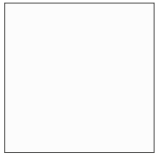


NOCE CANALETTA
Canaletta Walnut
tinto/stained moka

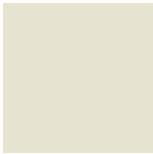


NOCE CANALETTA
Canaletta Walnut
tinto/stained wengé

Laccato opaco poro chiuso | Matt Lacquered closed pore



BIANCO
White
(RAL 9016)



AVORIO
Ivory
(RAL 1013)



ARGILLA
Argilla
(RAL 7006)



PIOMBO
Piombo
(NCS S5005G20Y)



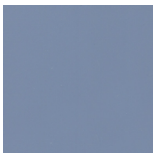
NERO
Black
(RAL 9005)



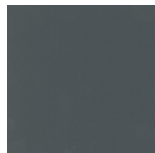
GRANATA
Granata
(NCS S4050Y90R)



PISTACCHIO
Pistacchio
(PANTONE 5825)



AVIO
Avio
(PANTONE 5415)



IRON
Iron
(RAL 7011)



CIOCCOLATO
Chocolate
(RAL 8019)

Metallo | Metal



ANTRACITE
SPAZZOLATO
Brushed Anthracite