



Hexa

Design Enzo Berti

Anno di produzione 2019

Production year 2019

[It] — Il progetto trae ispirazione dalla memoria, recuperando forme semplici e iconiche che appartengono al passato. L'elemento centrale della collezione è il montante di sezione esagonale usato in edilizia che in questo contesto viene interpretato come uno snodo sul quale va ad attaccarsi perpendicolarmente il piede, anch'esso recupero stilistico che ricorda l'arredo anni '50.

La base del tavolino è in trafilato metallico verniciato bruno oliva o bronzo, piano in marmo bianco di carrara, marmo noir antique o marmo emperador dark.

Struttura

In trafilato metallico verniciato con sezione esagonale e piedi in lama d'acciaio.

Top in marmo spessore 10 mm e con bordo rastremato.

[En] — The project takes its inspiration from the concept of our memory, reimagining simple and iconic forms with echoes from the past. The central element of the design is the upright hexagonal structure typically used in building construction that in this context is interpreted as a joint on which to attach perpendicularly to the feet.

This style detail is reminiscent of 1950's furniture design.

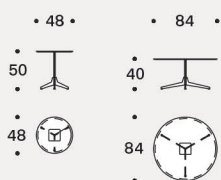
The base of the table is in drawn metallic with brown olive or bronze finishing, and the top is in white Carrara marble, black antique marble or emperador dark marble.

Structure

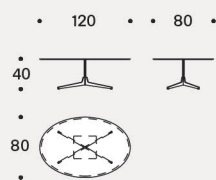
In painted wire drawn with hexagonal section and feet in steel blade.

Top in marble thickness 10 mm and with tapered edge.

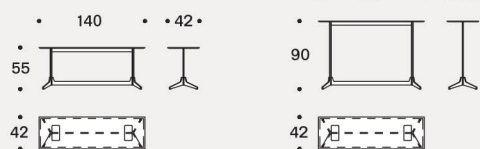
Top tondi / Round top



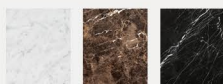
Top ovale / Oval top



Consolle



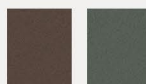
Finitura piani in marmo / Table top marble finish



1 2 3

1 Bianco Carrara / White Carrara / Blanc Carrara / Blanco Carrara
2 Emperador Dark
3 Noir Antique

Finitura struttura / Frame finish



1 2

1 Bronzo / Bronze / Bronze / Bronze
2 Bruno oliva / Brown olive / Brun olive / Marrón oliva