

waves

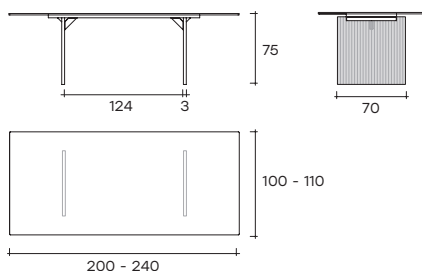
DESIGN LUDOVICA +
ROBERTO PALOMBA

modello registrato
registered model

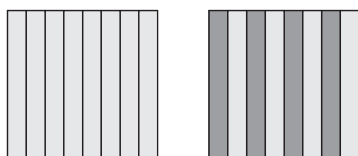
portata sul piano: 150 kg
load capacity on top: 150 kg

Tavolo con base composta da due elementi in DV-Glass® da 30 mm trasparente o a strisce verticali trasparenti e bronzo. Piano in vetro da 12 mm* o da 15 mm trasparente retroverniciato con tinte monocromatiche, oppure ricoperto in Ecomalta spatolatura tipo fine.

Table with base made of two separate 30 mm DV-Glass® elements, transparent or with transparent and bronze vertical glass stripes. Top available in 12* or 15 mm transparent glass, back-lacquered with monochrome finishes, or hand-finished with Ecomalta, finer-grained texture finish.



STRUTTURA DV-GLASS® DV-GLASS® STRUCTURE



- Trasparente
Transparent
- Bronzo
Bronze

Per combinazioni custom,
contattare il customer service.

For customized compositions
please contact Fiam customer service.

dimensioni L, P, H dimensions L, W, H (cm)	COD./CODE	L	P/W	H	peso netto net weight (kg)	peso lordo gross weight (kg)	volume imballo package volume (m³)
Tavolo con piano in vetro trasparente retroverniciato in tinta Cat.1. Base in DV Glass trasparente. <i>Table with top in transparent glass, back-lacquered -color Cat.1. Base in transparent DV glass.</i>	*W-TR200/V-	200	100	75	147	207	0,84
	W-TR240/V-	240	110	75	187	259	0,88
Tavolo con piano in vetro trasparente retroverniciato in tinta Cat.1. Base in DV Glass a strisce colorate. <i>Table with top in transparent glass, back-lacquered -color Cat.1. Base made of colored DV glass.</i>	*W-CO200/V-	200	100	75	147	207	0,84
	W-CO240/V-	240	110	75	187	259	0,88
Tavolo con piano in vetro ricoperto in Ecomalta, spatolatura tipo fine. Base in DV Glass trasparente. <i>Table with glass top, hand-finished with ecomalta, finer-grained texture finish. Base in transparent DV glass.</i>	*W-TR200/ECO-	200	100	75	147	207	0,84
	W-TR240/ECO-	240	110	75	187	259	0,88
Tavolo con piano in vetro ricoperto in Ecomalta, spatolatura tipo fine. Base in DV Glass a strisce colorate. <i>Table with glass top, hand-finished with ecomalta, finer-grained texture finish. Base made of colored DV glass.</i>	*W-CO200/ECO-	200	100	75	147	207	0,84
	W-CO240/ECO-	240	110	75	187	259	0,88

Dimensione su richiesta: min. 200x100 cm - max. 260x120 cm

Custom dimension: min. 200x100 cm - max. 260x120 cm

waves extendible

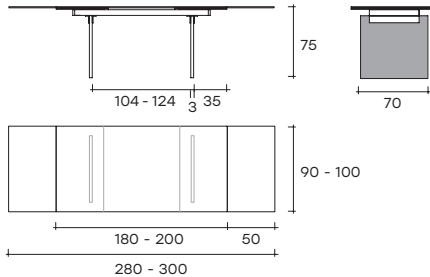
DESIGN LUDOVICA +
ROBERTO PALOMBA

modello registrato
registered model

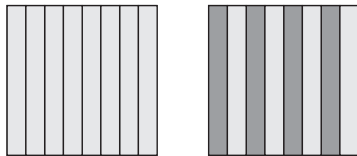
portata sul piano: 150 kg
portata sulla prolunga: 30 kg
load capacity on top: 150 kg
extension load capacity: 30 kg

Tavolo allungabile
con base composta
da due elementi
in DV Glass da 30 mm
trasparente o a strisce
verticali trasparenti
e bronzo. Piano
e allunghe in vetro
da 12 mm trasparente
retroverniciato con
tinte monocromatiche,
oppure ricoperto
in Ecomalta
spatolatura tipo fine.

Extendible table
with base made of two
separate 30 mm DV Glass
elements, transparent
or with transparent
and bronze vertical
glass stripes. Top and
extensions available
in 12 mm transparent
glass, back-lacquered
with monochrome finish
or hand-finished with
Ecomalta, finer-grained
texture finish.



STRUTTURA DV-GLASS® DV-GLASS® STRUCTURE



- Trasparente
Transparent
- Bronzo
Bronze

Per combinazioni custom,
contattare il customer service.

For customized compositions
please contact Fiam customer service.

dimensioni L, P, H
dimensions L, W, H
(cm)

	COD./CODE	L	P/W	H	peso netto net weight (kg)	peso lordo gross weight (kg)	volume imballo package volume (m³)
Tavolo allungabile con piano in vetro trasparente retroverniciato in tinta Cat.1. Base in DV Glass trasparente. Extendible table with top in transparent glass, back-lacquered - color Cat.1. Base in transparent DV glass.	W-TRAL180 /IV-	180 (280)	90	75	175	238	0,81
	W-TRAL200 /IV-	200 (300)	100	75	190	254	0,88
Tavolo allungabile con piano in vetro trasparente retroverniciato in tinta Cat.1. Base in DV Glass a strisce colorate. Extendible table with top in transparent glass, back-lacquered - color Cat.1. Base made of colored DV glass.	W-COAL180 /IV-	180 (280)	90	75	175	238	0,81
	W-COAL200 /IV-	200 (300)	100	75	190	254	0,88
Tavolo allungabile con piano in vetro ricoperto in Ecomalta, spatolatura tipo fine. Base in DV Glass trasparente. Extendible table with glass top, hand-finished with ecomalta, finer-grained texture finish. Base in transparent DV glass.	W-TRAL180 /ECO-	180 (280)	90	75	175	238	0,81
	W-TRAL200 /ECO-	200 (300)	100	75	190	254	0,88
Tavolo allungabile con piano in vetro ricoperto in Ecomalta, spatolatura tipo fine. Base in DV Glass a strisce colorate. Extendible table with glass top, hand-finished with ecomalta, finer-grained texture finish. Base made of colored DV glass.	W-COAL180 /ECO-	180 (280)	90	75	175	238	0,81
	W-COAL200 /ECO-	200 (300)	100	75	190	254	0,88

VETRO RETROVERNICIATO _ BACK PAINTED GLASS				
CAT. COLORE COLOR CAT.	COLORI COLORS	CODICE _ CODE		
		Vetro trasparente <i>Transparent glass</i>	Vetro trasparente fuso <i>Fused transparent glass</i>	Vetro extralight acidato <i>Etched extralight glass</i>
CAT.1 Tinta unita <i>Plain color</i>	Grigio grafite <i>Grey graphite</i>	V-GR		
	Rosso vinaccia <i>Wine red</i>	V-VI		
	Testa di moro <i>Dark brown</i>	V-MR		

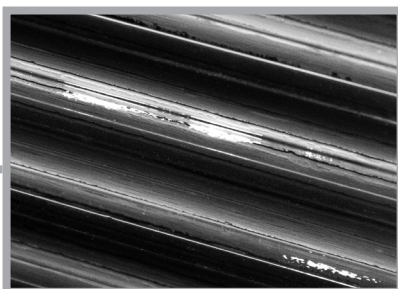
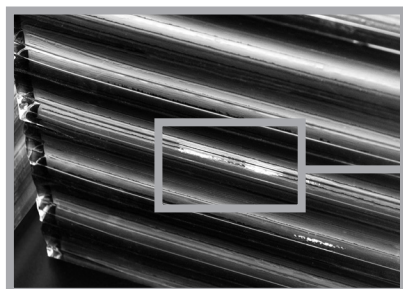
FINITURE ECOMALTA _ ECOMALTA FINISHES						
FINITURE FINISHES	Avorio <i>Ivory</i>	Tortora <i>Dove grey</i>	Nero Ardesia <i>Black slate</i>	Argilla <i>Clay brown</i>	Fango <i>Mud brown</i>	Calce <i>Lime grey</i>
CODICE CODE	TBP	TNR	MNA	MAR	M25	M42

Per altre finiture fare riferimento alla tabella nella bandella di copertina.

Per misure e finiture su richiesta rivolgersi all'ufficio commerciale.

For the other finishes, please refer to the chart in the fold flap cover.

For customized dimensions and finishes contact FIAM customer service.



Lievi tracce, avvallamenti superficiali ed irregolarità interne ed esterne alla lastra in vetro sono segni distintivi del processo di fusione ad alta temperatura che ne garantiscono l'artigianalità. Non possono quindi essere oggetto di contestazione.

Slight traces on the surface, perimeter irregularities and small air bubbles in the glass plate are distinctive signs of the high-temperature fusion process that guarantee its craftsmanship. They cannot therefore be contested.