

FANTINO

Scheda prodotto
Product datasheet

LEIMA



FANTINO

Gordon Guillaumier firma l'elegante poltrona Fantino. Dalle forme compatte, grazie alla sinuosità delle linee, richiama vagamente la forma di una sella da cavallo montata sulla base in frassino tinto rovere termotrattato.

L'imbottitura morbida ma asciutta riduce il volume complessivo, bilanciando le proporzioni, pur mantenendo inalterato il comfort. Un progetto senza tempo che pone al centro i valori della cultura manifatturiera di Lema come sottolinea la profilatura in gros grain che corre lungo la cucitura dei rivestimenti in tessuto o pelle.

Struttura

– Legno

Seduta/Schienale

– Tessuto

– Pelle

– Ecopelle

Gordon Guillaumier signs the elegant FANTINO armchair. With its compact and sinuous forms, which vaguely recall a saddle mounted on an oak-tinted, heat-treated, ash base, the soft but essential upholstery keeps the dimensions contained, balancing out the proportions, while still ensuring optimal comfort. A timeless project based on the ethos of Lema's manufacturing culture, emphasised in the gros-grain profile that runs along the stitch work of the fabric or leather upholstery.

Structure

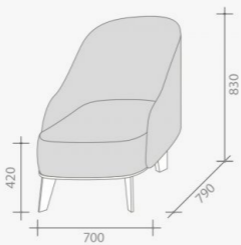
– Wood

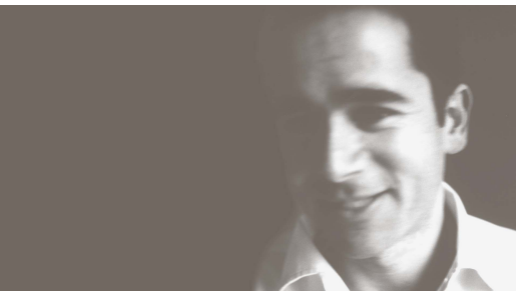
Seat/ backrest

– Fabric

– Leather

– Eco-leather





Design by: GORDON GUILLAUMIER

Gordon Guillaumier nasce nel 1966 a Malta. Studia a Malta, in Svizzera, in Inghilterra e in Italia.

Si diploma in industrial design presso lo IED di Milano (1988-1991) ottenendo successivamente un master in industrial design presso la Domus Academy, Milano (1992).

Nel 1993 dopo l'apprendistato presso Baleri Associati, collabora con Rodolfo Dordoni, disegnando i suoi primi pezzi.

Nel 2002 apre il proprio studio, lavorando sul design di prodotto ma anche come consulente per progetti di design.

Ha collaborato per marchio come Azzurra Ceramiche, Bosa, Ceramiche Piemme, Desalto, DeSede, Driade, FontanaArte, Foscarini, Frag, Matteo Grassi, Minotti, Montina, Moroso, Oluce, Pamar, Paola C, Roda, Tacchini.

Ha ricevuto numerosi riconoscimenti, tra i quali: Interzum 2011 Award, Wallpaper Design Award 2014, Compasso d'Oro 2016.

La collaborazione per Lema per cui firma numerosi progetti inizia nel 2012.

Gordon Guillaumier was born in 1966 in Malta. He studied in Malta, Switzerland, England and Italy.

He gained a diploma in industrial design at the IED in Milan (1988-1991), successfully then gaining a Masters in Industrial Design at the Domus Academy, Milan (1992).

In 1993 after an internship at Baleri Associati, he collaborated with Rodolfo Dordoni, designing his first pieces.

In 2002 he opens his own studio, working on product design as well as being a consultant on design projects.

He has collaborated with brands such as Azzurra Ceramiche, Bosa, Ceramiche Piemme, Desalto, DeSede, Driade, FontanaArte, Foscarini, Frag, Matteo Grassi, Minotti, Montina, Moroso, Oluce, Pamar, Paola C, Roda, Tacchini.

He has received various awards such as: Interzum 2011 Award, Wallpaper Design Award 2014, Compasso d'Oro 2016.

His collaboration with Lema began in 2012, for which he has designed various objects.

Finiture
Finishes

tessuti
fabrics



alena tde680



alena tde681



alena tde682



alena tde683



alena tde684



alena tde685



alena tde686



alya tdc160



alya tdc161



alya tdc162



alya tdc163



alya tdc164



alya tdc165



alya tdc166



alya tdc167



alya tdc168



alya tdc169



alya tdc170



alya tdc171



alya tdc172



alya tdc173



alya tdc174



alya tdc175



alya tdc176



alya tdc177



antares tdc880



antares tdc881



antares tdc882



antares tdc883



boote tdd600



boote tdd601



boote tdd602



boote tdd603



boote tdd604



boote tdd605



boote tdd606



boote tdd607



boote tdd608



boote tdd609



cassiopea tdc120



cassiopea tdc121



cassiopea tdc122



cassiopea tdc123



cassiopea tdc124



cassiopea tdc125



cassiopea tdc126



cassiopea tdc127



cassiopea tdc128



cassiopea tdc129



cassiopea tdc130



cassiopea tdc131



cassiopea tdc132



cassiopea tdc133



cassiopea tdc134



cassiopea tdc135



cassiopea tdc136



cassiopea tdc137



cassiopea tdc138



cassiopea tdc139



cassiopea tdc140



cassiopea tdc141



cassiopea tdc142



cerere tdc510



cerere tdc511



cerere tdc512



cerere tdc513



cerere tdc514



cerere tdc515



cerere tdc516



cerere tdc517



cerere tdc518



cerere tdc519



cerere tdc520



chara tdc760



chara tdc761



chara tdc762



chara tdc763



chara tdc764



chara tdc765



chara tdc766



chara tdc767



chara tdc768



chara tdc769



chara tdc770



chara tdc771



chara tdc772



chara tdc773



chara tdc774



chara tdc775



chao tdc790



chao tdc791



chao tdc792



chao tdc793



chao tdc794



dorado tdd870



dorado tdd871



dorado tdd872



dorado tdd873



dorado tdd874



dorado tdd875



electra tdd200



electra tdd201



electra tdd202



electra tdd203



electra tdd204



electra tdd205



electra tdd206



electra tdd207



eridani tde640



eridani tde641



eridani tde642



eridani tde643



eridani tde644



eridani tde645



eridani tde646



eridani tde647



eridani tde648



eridani tde649



fenice tdd850



fenice tdd851



fenice tdd852



fenice tdd853



fenice tdd854



fenice tdd855



fenice tdd856



fenice tdd857



fenice tdd858



fenice tdd859



fenice tdd860



fenice tdd861



fenice tdd862



fenice tdd863



fenice tdd864



fenice tdd865



galatea tdc410



galatea tdc411



galatea tdc420



galatea tdc421



galatea tdc430



galatea tdc431



galatea tdc440



galatea tdc441



halley tdb400



halley tdb401



halley tdb402



halley tdb403



halley tdb404



halley tdb405



halley tdb406



halley tdb407



halley tdb408



halley tdb409



halley tdb410



halley tdb411



indus tdc890



indus tdc892



kuma tdd180



kuma tdd181



kuma tdd182



kuma tdd183



kuma tdd184



kuma tdd185



kuma tdd186



kuma tdd187



kuma tdd188



kuma tdd189



kuma tdd190



leo tdc891



leo tdc893



lyra tdc750



lyra tdc751



lyra tdc752



lyra tdc753



lyra tdc754



lyra tdc755



lyra tdc756



lyra tde757



maia tde830



maia tde831



maia tde832



maia tde833



maia tde834



maia tde835



naos tde630



naos tde631



naos tde632



naos tde633



naos tde634



naos tde635



naos tde636



naos tde637



naos tde638



naos tde639



nashira tda400



nashira tda401



nashira tda402



nashira tda403



nashira tda404



nashira tda405



nashira tda406



nashira tda407



norma tde841



norma tde842



norma tde843



norma tde844



norma tde845



nube tde301



nube tde302



nube tde303



nube tde305



nube tde306



nube tde307



nube tde308



nube tde309



nube tde310



nube tde311



nube tde312



nube tde313



nube tde314



nube tde315



nyda tdc370



nyda tdc371



nyda tdc372



nyda tdc373



nyda tdc374



nyda tdc375



nyda tdc376



nyda tdc377



nyda tdc378



nyda tdc379



nyda tdc380



nyda tdc381



orione tdb080



orione tdb081



orione tdb082



orione tdb083



orione tdb084



orione tdb085



orione tdb086



orione tdb087



phobos tdc445



phobos tdc446



phobos tdc447



phobos tdc448



phobos tdc449



phobos tdc450



phobos tdc451



phobos tdc452



phobos tdc453



phobos tdc454



phobos tdc454



phobos tdc455



phobos tdc456



phobos tdc457



phobos tdc458



phobos tdc460



phobos tdc461



phobos tdc462



phobos tdc463



phobos tdc465



phobos tdc466



phobos tdc469



pyxis tdc230



pyxis tdc231



pyxis tdc232



pyxis tdc233



pyxis tdc234



pyxis tdc235



pyxis tdc236



pyxis tdc237



regolo tda120



regolo tda121



regolo tda122



regolo tda123



regolo tda124



regolo tda125



regolo tda126



regolo tda127



sagitta tdd220



sagitta tdd221



sagitta tdd222



sagitta tdd223



sagitta tdd224



sagitta tdd225



sagitta tdd226



sarin tdd80



sarin tdd81



sarin tdd82



sarin tdd83



sarin tdd84



sarin tdd85



T030 Batik



tolocco tdd800



tolocco tdd801



tolocco tdd802



tolocco tdd803



vega tdd552



vega tdd554



vega tdd557



vega TDD550



vega tdd551



vega tdd553



vega tdd555



vega tdd556



vega tdd558



vega tdd559



vega tdd560



vega tdd561



vega tdd562



zaniah tdd150



zaniah tdd151



zaniah tdd152



zaniah tdd153



zaniah tdd154



zaniah tdd155



zaniah tdd156

PELLI
leathers



basic pb7050



basic pb7060



basic pb7070



basic pb7100



basic pb7130



basic pb7140



basic pb7150



basic pb7160



basic pb7170



basic pb7200



basic pb7230



basic pb7240



basic pb7280



basic pb7732



basic pb7748



nabuk pn3405



nabuk pn3409



nabuk pn3411



nabuk pn3415



nabuk pn3416



nabuk pn3424



nabuk pn3436



super ps2002



super ps2052



super ps2062



super ps2068



super ps2190



super ps2262



super ps2266



super ps2268



super ps2270



super ps2276



super ps2280



top pt0011



top pt0012



top pt0013



top pt0014



top pt0015

ecopelli
eco-leathers



castore tdc540



castore tdc541



castore tdc542



castore tdc543



castore tdc544



castore tdc545



castore tdc546



castore tdc547



castore tdc548



castore tdc549



castore tdc550



castore tdc551



castore tdc552



castore tdc553



castore tdc554



castore tdc555

legni
woods



rovere termotrattato

gros grain
gros grain



043-peltro



050-sahra



057-fumo



063-senape



085-rubino



088-amaranto



096-coccio



097-cioccolato



115-marina



125-oliva



162-cipolla



175-muschio

Consigli per la manutenzione e la pulizia

Care and cleaning

Per la pulizia ordinaria usare un panno inumidito con acqua. Nel caso di pulizie più accurate si consiglia l'uso di detersivi a base di sapone neutro.

Avvertenza

Evitare assolutamente prodotti a base di ammoniacca, solventi o abrasivi.

Sicurezza: seguire le istruzioni di montaggio. Evitare qualsiasi modifica ai mobili che possa comprometterne la stabilità.

Smaltimento: una volta terminato l'utilizzo affidare il mobile ad aziende comunali o private preposte allo smaltimento dei rifiuti solidi ingombranti.

Avvertenza

In ottemperanza della legge N. 126 del 10 aprile 1991 "Norme per l'informazione del consumatore" e al decreto N. 101 "Regolamento d'attuazione" dell'8 febbraio 1997

La qualità Lema è garantita dalla produzione esclusivamente realizzata in Italia.

For routine cleaning, use a soft cloth moistened with water. For more thorough cleaning, use a neutral detergent.

Warning

Avoid any use of products that may contain ammonia, solvents or abrasives.

Safety: carefully follow the assembly instructions. Do not modify the furniture in any way as this could render it unstable.

Disposal: if product needs to be disposed of, please contact the local council or a private company that can dispose of bulk waste products.

Notice

In compliance with law N. 126, April 10th 1991 "Customer information regulation" and with decree N. 101 "Implementation rules", February 8th 1997

The quality of Lema products is guaranteed by their being produced exclusively in Italy.

Associato a - Associated with



ASSARREDO ASSOCIATION FEDERAZIONE ASSARREDO

LEMA s.p.a.
20040 Alzate Brianza
Como - Italy
Strada Statale Briantea n°2
T +39 031 630 990
F +39 031 632 492

lemamobili.com