

f  
wardrobes  
system  
t



f  
wardrobes  
system  
t



©Ballancin

Ballancin presenta il *nuovo sistema armadi First*.

Un progetto del contenere che interpreta al meglio i trends più attuali dell'abitare e si distingue per la *qualità dei materiali*, la *massima versatilità compositiva* e *l'estetica sempre più personalizzata*. Proposte originali che entrano nelle case assecondando la personalità di chi vi abita, le sue inclinazioni e il suo stile di vita. *First è qualità, versatilità e design.*

*Ballancin presents First, a new wardrobes system.*

*A storage concept that interprets the latest in home lifestyle trends and articulates a maximum in composition flexibility with the ever more customized aesthetics. Original solutions, creating an affinity with the numerous styles of contemporary life. First is quality, versatility and design.*

**ANTA BATTENTE**  
*/ Hinged door p. 5*

**Natural Chic**  
*wardrobe#01 p. 6*

Linea

*wardrobe#02 p. 12*

Jackie

*wardrobe#03 p. 18*

Urban

*wardrobe#04 p. 24*

Linea

*wardrobe#05 p. 28*

Free

**Contemporary**

*wardrobe#06 p. 34*

Linea

*wardrobe#07 p. 40*

Jackie

*wardrobe#08 p. 46*

Miller

*wardrobe#09 p. 52*

Linea | Velo

*wardrobe#10 p. 60*

Linea

**Timeless**

*wardrobe#11 p. 68*

Rod Plus

*wardrobe#12 p. 74*

Rod | Velo

*wardrobe#13 p. 80*

Gem

*wardrobe#14 p. 86*

Gem

*wardrobe#15 p. 94*

Velo | Gem

**ANTA SCORREVOLE**  
*/ Sliding door p. 103*

**Natural Chic**

*wardrobe#16 p. 104*

Urban

*wardrobe#17 p. 110*

City | Linea

*wardrobe#18 p. 118*

Free

**Contemporary**

*wardrobe#19 p. 122*

Side

*wardrobe#20 p. 128*

Stripe

*wardrobe#21 p. 134*

Madame

**Timeless**

*wardrobe#22 p. 140*

Reverse

**ANTA COMPLANARE**  
*/ Coplanar door p. 147*

**Natural Chic**

*wardrobe#23 p. 148*

Ego | Mirage

*wardrobe#24 p. 154*

Rod Plus

**Contemporary**

*wardrobe#25 p. 160*

Rail

*wardrobe#26 p. 166*

Rod

**Timeless**

*wardrobe#27 p. 172*

Ego

*wardrobe#28 p. 178*

Lord

**SPAZIO GUARDAROBA**  
*/ Walk-in closet p. 185*

*Walk-in closet#01 p. 186*

First | Velo

*Walk-in closet#02 p. 194*

First | Velo

**TECHNICAL SECTION p. 200**

**first**wardrobes system

Michele Marcon designer



Casa come spazio organizzato ma libero, capace di accogliere il presente e il passato, di raccogliere suggestioni e differenze. Il sistema armadi Ballancin disegna e realizza le strutture essenziali dello spazio, declinandolo in tre stili: *Natural Chic*, che unisce alla luminosità e alla leggerezza del design di ispirazione scandinava la raffinatezza di materiali pregiati. *Contemporary*, orientata alla ricercatezza – e a un certo cosmopolitismo – ma anche alla scrupolosa attenzione al dettaglio. E infine *Timeless*, che reinterpreta in chiave attuale i grandi classici dell'arredamento

*Home, an intelligent and lively space, organized but free, where the present and past coexist, where suggestions and differences are gathered. Ballancin wardrobe system draws and creates essential structures of space in three styles: Natural Chic, which combines the refinement of precious materials with the brightness and lightness of Scandinavian-inspired design. Contemporary, oriented towards sophistication - and to a certain extent cosmopolitanism - but also with scrupulous attention to detail. And finally Timeless, a modern reinterpretation of great classic furniture.*



*Natural Chic*



*Contemporary*



*Timeless*

## ANTA BATTENTE

### *Hinged door*

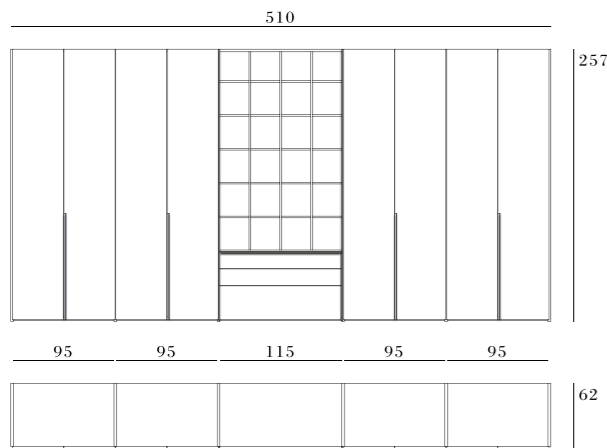
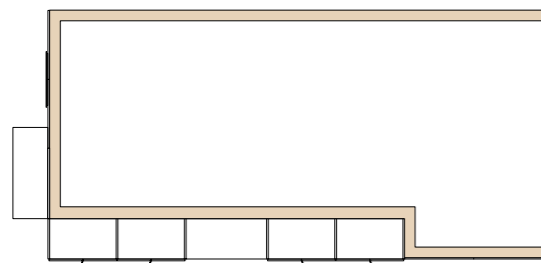
Gli armadi *anta battente* sono una risposta puntuale alle nuove esigenze d'arredo: un'*estetica innovativa*, una *totale flessibilità compositiva*, una *varietà di attrezzature e accessori*. Le composizioni che vengono presentate confermano queste qualità concentrando con armonia un'*ampia varietà di elementi*, dalle soluzioni a *libreria* a quelle a *ponte*, dagli *elementi ad angolo* a quelli *terminale*.

*Wardrobes with hinged door are a prompt response to new furnishing demands. An innovative aesthetic quality, total compositions flexibility, a variety of equipments and accessories. The compositions presented in this issue confirms these qualities, seamlessly bringing together a wide variety of elements, from bookshelf solutions to bridge solutions, from corner to end elements.*



# Wardrobe #01

## NATURAL CHIC



### Linea battente *Hinged Linea*

***In questo ambiente:***  
armadio anta Linea apertura battente,  
boiserie Linea, comò Artic, libreria  
pensile Random, specchiera Form.

***In the room:***  
wardrobe with Linea hinged door,  
Linea boiserie, Artic chest of drawers,  
Random wall bookshelf, Form mirror.



**Armadio anta Linea apertura battente**\_laccato poro aperto Canapa PA04, maniglia MN32 in laccato opaco Canapa OL04, vano giorno con libreria, frassino tinto Argilla FT02. **Boiserie Linea**\_frassino tinto Argilla FT02. **Comò Artic**\_laccato poro aperto Canapa PA04 con basamento frassino tinto Argilla FT02. **Libreria pensile Random**\_laccato opaco Fango OL06 e Canapa OL04. **Specchiera rotonda**\_Form R80.

*Wardrobe with Linea hinged door\_Canapa PA04 open pore lacquered ash, Canapa OL04 matte lacquer finish MN32 handle, open unit with shelves, Argilla FT02 stained ash. Linea boiserie\_Argilla FT02 stained ash. Artic chest of drawers\_Canapa PA04 open pore lacquered ash and Argilla FT02 stained ash. Random wall bookshelf\_Fango OL06 and Canapa OL04 matte lacquer finish. Form R80\_round mirror.*



aluminum

Particolare della *maniglia MN32* in *alluminio laccato* Canapa OL04; posizionata rigorosamente a *filo anta*, *geometria e praticità*. La *boiserie Linea* in frassino tinto Argilla FT02 incorpora perfettamente l'armadio alla parete.

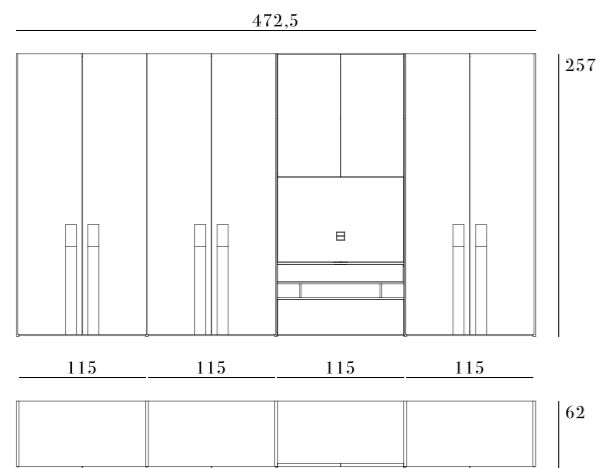
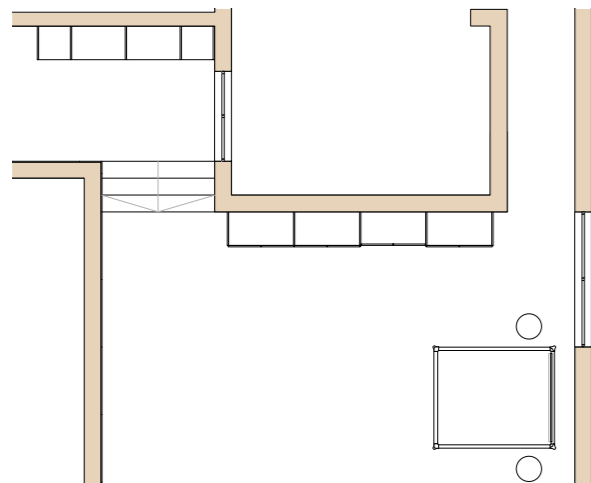
*Detail of the MN32 handle in Canapa OL04 lacquered aluminum; rigorously positioned flush with the door, geometry and practicality. The Linea boiserie in Argilla FT02 stained ash perfectly incorporates the wardrobe to the wall.*





# Wardrobe #02

## NATURAL CHIC



### Jackie battente *Hinged Jackie*

***In questo ambiente:***  
armadio anta Jackie apertura battente,  
letto Lauren, tavolino Cross Marmo,  
cabina armadio First in finitura Grey  
Wood.

***In the room:***  
*wardrobe with Jackie hinged door,  
Lauren bed, Cross Marmo small table,  
First walk-in closet in Grey Wood finish.*



**Armadio anta Jackie battente**\_laccato opaco Salvia OL07, maniglia integrata. **Vano TV con cassetti e antine apertura push-pull**\_frassino tinto Sabbia FT01. **Letto Lauren**\_frassino tinto Sabbia FT01. **Tavolino Cross Marmo**\_struttura in metallo finitura Nero Opaco ME01, piano marmo Bianco Carrara. **Cabina armadio First**\_in finitura Grey Wood.

*Wardrobe with Jackie hinged door\_Salvia OL07 matte lacquer finish, built-in handles. TV unit with push-pull doors and drawers\_Sabbia FT01 stained ash. Lauren bed\_Sabbia FT01 stained ash. Cross Marmo small table\_Nero Opaco ME01 metal frame, Bianco Carrara marble top. First walk-in closet\_in Grey Wood finish.*





*L'elemento TV* si contraddistingue per il *design molto ricercato: spessore sottile* dei piani, fianchi con *massello sagomato*, antine e cassetti arretrati con *apertura push-pull*.

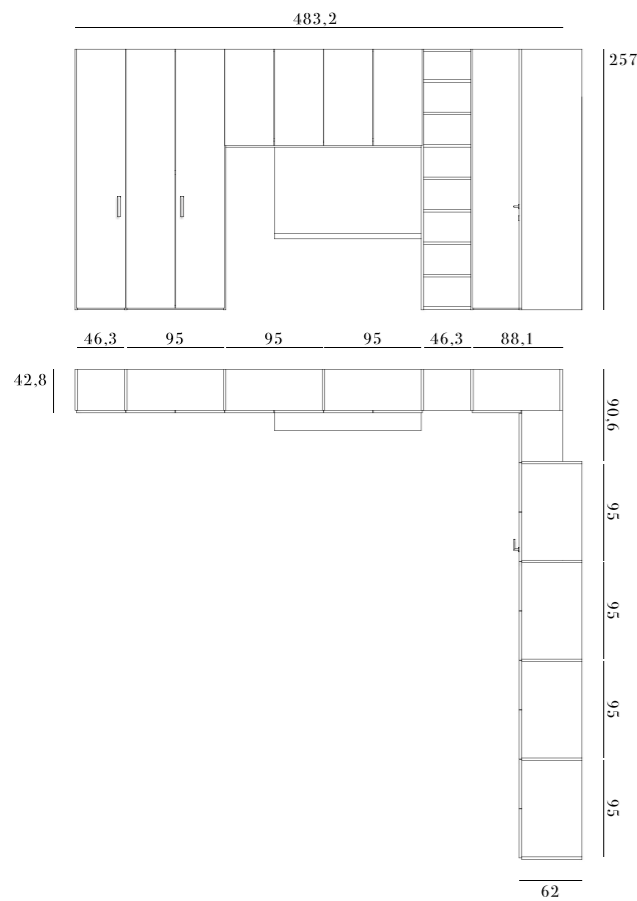
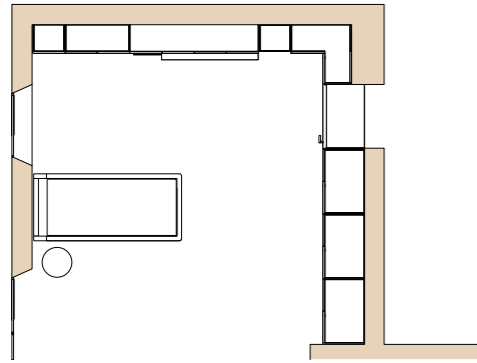
*Il pannello per lo schermo TV*, dietro al quale si può celare un vano porta-dvd, è *girevole* per permettere una visione ideale da diverse angolazioni. *I vani a giorno* sottostanti permettono di posizionare vari impianti, come un decoder o un lettore dvd.

*The TV element has a very refined design: thin thickness of the tops, sides with solid wood edge, doors and drawers with push-pull opening. Behind the panel for the TV screen you can have a dvd compartment. The TV panel is adjustable to allow ideal vision from different angles. Two open units below allow various pieces of equipment to be set up, such as a decoder or dvd player.*



# Wardrobe #03

## NATURAL CHIC



### Urban battente Hinged Urban

**In questo ambiente:**  
armadio anta Urban apertura battente,  
letto Dedalo, elemento pensile Cubic,  
tavolino Cross Marmo.

**In the room:**  
wardrobe with Urban hinged door,  
Dedalo bed, Cubic wall unit,  
Cross Marmo small table.



**Armadio anta Urban battente**\_laccato opaco Bianco Puro OL01, maniglia integrata con vetro laccato Bianco Puro VL01. **Letto singolo Dedalo**\_frassino tinto Argilla FT02, cuscino testiera tessuto Linara Ecrù L916. **Elemento pensile Cubic**\_laccato opaco Bianco Puro OL01. **Tavolino Cross Marmo**\_struttura in metallo finitura Nero Opaco ME01, piano marmo Bianco Carrara.

*Wardrobe with Jackie hinged door\_Bianco Puro OL01 matte lacquer finish, Bianco Puro VL01 lacquered glass on built-in handles.  
Dedalo single bed\_Argilla FT02 stained ash, headboard cushion in Linara Ecrù L916. Cubic wall unit\_Bianco Puro OL01 matte lacquer finish. Cross Marmo small table\_Nero Opaco ME01 metal frame, Bianco Carrara marble top.*





study area

*L'elemento ponte è stato progettato con sottostante una zona studio composta da piano scrittoio di grosso spessore, schienale in contrasto finitura frassino tinto Argilla FT02, elemento pensile Cubic con un cassetto. Elemento a giorno uso libreria con o senza antine e con schienale in contrasto finitura frassino tinto Argilla FT02. Interessante la soluzione a misura con passaggio porta integrato nell'armadio.*

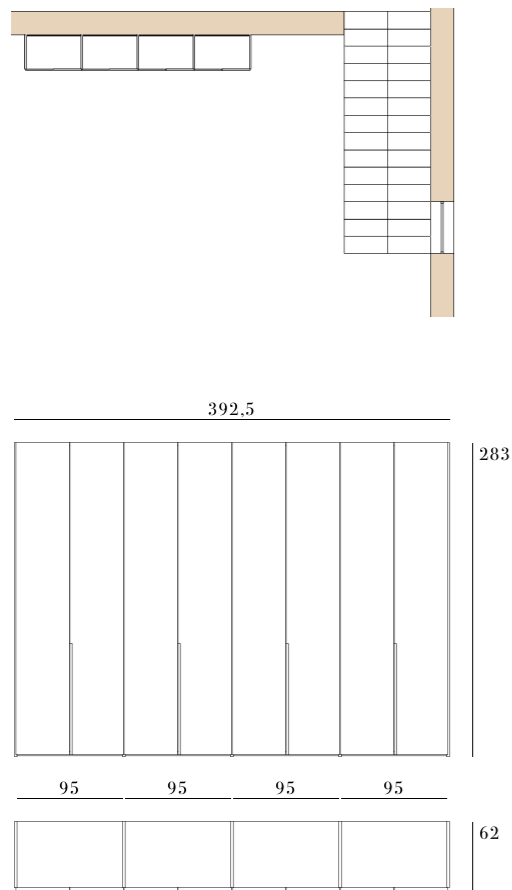
*The bridge unit has been designed with a study area underneath, composed of a thick writing top, a back in Argilla FT02 stained ash, a Cubic wall unit with a drawer. Bookcase open unit with or without doors and with back in Argilla FT02 stained ash. Interesting tailormade solution with door passage integrated into the cabinet.*



# Wardrobe #04

---

## NATURAL CHIC



**Linea battente**  
*Hinged Linea*

***In questo ambiente:***  
armadio anta Linea apertura battente.

***In the room:***  
wardrobe with Linea hinged door.





first wardrobes system

Wardrobe #04

**Armadio anta Linea apertura battente\_** laccato opaco Bianco Puro OL01, maniglia MN10 finitura Rovere Naturale RN01. Il *look natural chic* trova nel *bianco* la sua anima gemella, la maniglia è in *legno massello tinta rovere*.

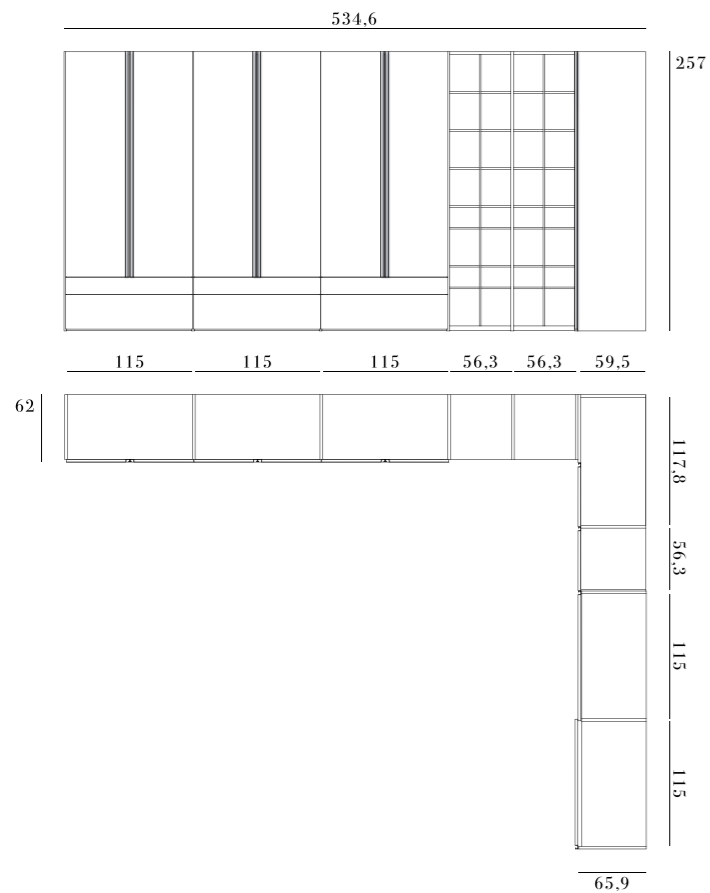
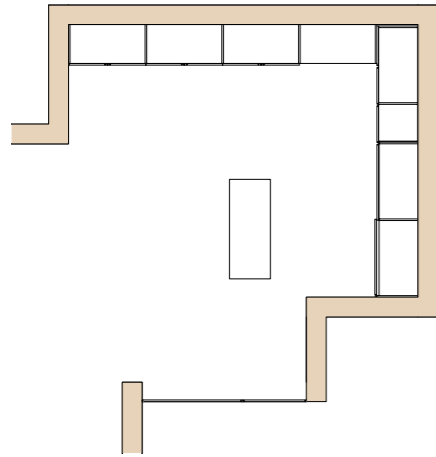
*Wardrobe with Linea hinged door\_ Bianco Puro OL01 matte lacquer finish, Rovere Naturale RN01 finish MN10 handle.*

*The modern look of natural chic is in white color his soul mate, the handle is in solid wood.*

# Wardrobe #05

---

## NATURAL CHIC



**Free battente – Free scorrevole**  
*Hinged Free – Sliding Free*

***In questo ambiente:***  
armadio anta Free apertura battente  
e anta Free apertura scorrevole,  
scrivania First.

***In the room:***  
wardrobe with Free hinged door  
and Free sliding door, First desk.





**Armadio anta Free battente e scorrevole\_** laccato poro aperto Bianco Puro PA01, maniglia integrata MN52 in laccato opaco Ferro OL09, vano giorno con libreria, laccato opaco Ferro OL09. **Scrivanìa First\_** laccato opaco Ferro OL09 e piano in frassino tinto Roccia FT05.

*Wardrobe with Free hinged and sliding door\_ Bianco Puro PA01 open pore lacquered ash, Ferro OL09 matte lacquer finish MN52 built-in handle, open unit with shelves, Ferro OL09 matte lacquer finish. First desk\_ Ferro OL09 matte lacquer finish and Roccia FT05 stained ash top.*





Wardrobe #05

Particolare delle maniglie profilo MN52 integrate su entrambe le ante e laccate colore Ferro OL09.

*Detail of the MN52 profile handles in Ferro OL09 lacquered aluminum, built-in to both doors.*

## new units

Nell'armadio Free *praticità e valenza estetica* vivono in perfetta simbiosi, diventando espressione di un *comfort assoluto*; arricchito da elementi nuovi quali la *libreria* in laccato opaco, l'*elemento ad angolo cieco*, *cassetti esterni* in due misure con apertura *push pull*.

*In the Free wardrobe practicality and aesthetic value live together in perfect symbiosis, becoming an expression of absolute comfort, enriched with new units: matt lacquered bookcase, blind corner unit, external drawers in two sizes with push-pull opening.*

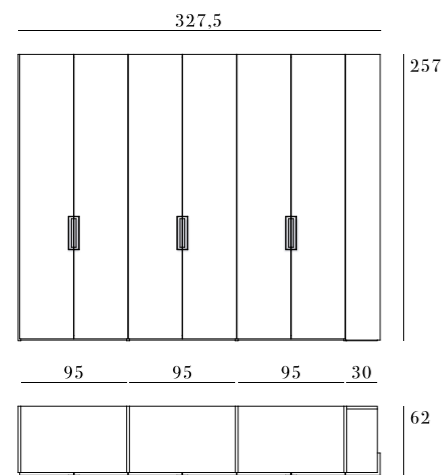
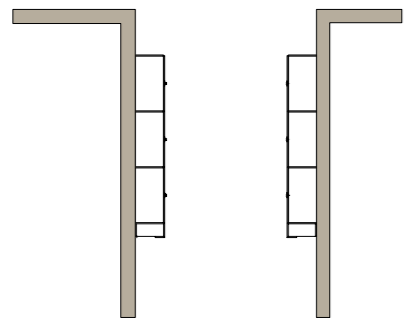
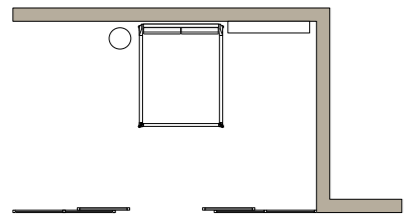




# Wardrobe #06

---

## CONTEMPORARY



### Linea battente

*Hinged Linea*

***In questo ambiente:***  
armadi anta Linea apertura battente,  
letto Lauren, libreria pensile Random.

***In the room:***  
wardrobes with Linea hinged door,  
Lauren bed, Random wall bookshelf.



first wardrobes system

**Armadi** anta **Linea** apertura **battente**\_frassino tinto Argilla FT02, maniglia MN40 in finitura Metal Iron ME05. **Terminale** a giorno libreria, frassino tinto Argilla FT02. **Letto** **Lauren**\_frassino tinto Argilla FT02. **Libreria** **pensile** **Random**\_frassino tinto Sabbia FT01 e laccato opaco Salvia OL07.

*Wardrobes with Linea hinged door\_Argilla FT02 stained ash, Metal Iron ME05 finish MN40 handles. End open unit with shelves, Argilla FT02 stained ash. Lauren bed\_Argilla FT02 stained ash. Random wall bookshelf\_Sabbia FT01 stained ash and Salvia OL07 matte lacquer finish.*

Wardrobe #06





comfort

Dettaglio della **nuova maniglia MN40** in finitura Metal Iron ME05, **comoda impugnatura e design ricercato.**

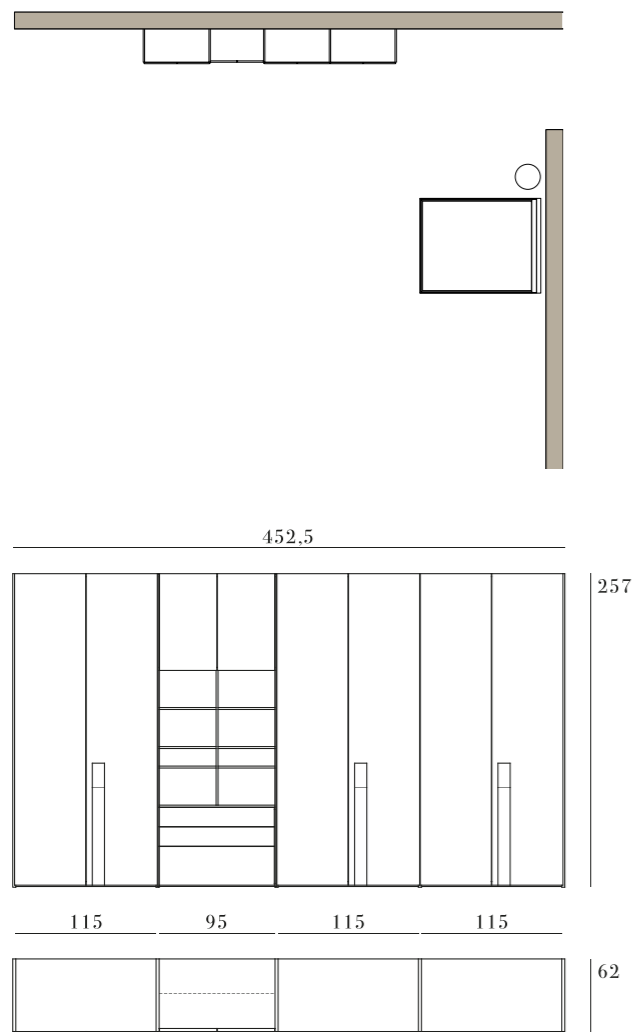
*Detail of a new MN40 handle in Metal Iron ME05 finish, comfortable grip and sophisticated design.*

**Armadio anta Linea apertura battente**\_frassino tinto Argilla FT02, interni in finitura Tecno Pelle e illuminazione integrata led.  
*Wardrobes with Linea hinged door\_ Argilla FT02 stained ash, inner equipment in Tecno Pelle finish and built-in led lamps.*



# Wardrobe #07

## CONTEMPORARY



### Jackie battente *Hinged Jackie*

***In questo ambiente:***  
armadio anta Jackie apertura battente,  
letto Cronos Soft, tavolino Cross Marmo.

***In the room:***  
wardrobe with Jackie hinged door,  
Cronos Soft bed, Cross Marmo small table.





**Armadio anta Jackie apertura battente**\_laccato opaco Visone OL05, maniglia integrata con similpelle Vintage Tortora E4G9. Vano a giorno libreria con cassetti e antine apertura push-pull, Visone OL05. **Letto Cronos Soft giroletto A**\_frassino tinto Roccia FT05, testiera in similpelle Vintage Tortora E4G9. **Tavolino Cross Marmo**\_struttura in metallo finitura Nero Opaco ME01, piano marmo Bianco Carrara.

*Wardrobe with Jackie hinged door\_Visone OL05 matte lacquer finish, Vintage Tortora E4G9 imitation leather built-in handles. Open unit with shelves, push-pull doors and drawers, Visone OL05 matte lacquer finish. Cronos Soft bed with bedframe A\_Roccia FT05 stained ash, headboard in Vintage Tortora E4G9 imitation leather. Cross Marmo small table\_Nero Opaco ME01 metal frame, Bianco Carrara marble top.*





**Armadio anta Jackie apertura battente\_** laccato opaco Visone OL05, maniglia integrata con similpelle Vintage Tortora E4G9. **Letto Cronos Soft giroletto A\_** frassino tinto Roccia FT05, testiera in similpelle Vintage Tortora E4G9.

*Wardrobe with Jackie hinged door\_ Visone OL05 matte lacquer finish, Vintage Tortora E4G9 imitation leather built-in handles. Cronos Soft bed with bedframe A\_ Roccia FT05 stained ash, headboard in Vintage Tortora E4G9 imitation leather.*

shadows

La **maniglia** dell'anta Jackie è **scavata direttamente nel pannello** e crea un piacevole gioco di **ombre e profondità**. Può avere il rivestimento in **morbida ecopelle Vintage** con **cucitura a vista**.

*The handle of the Jackie door is formed directly in the panel and created pleasing play on shadows and depth. It can have the soft imitation leather Vintage with visible stitching.*

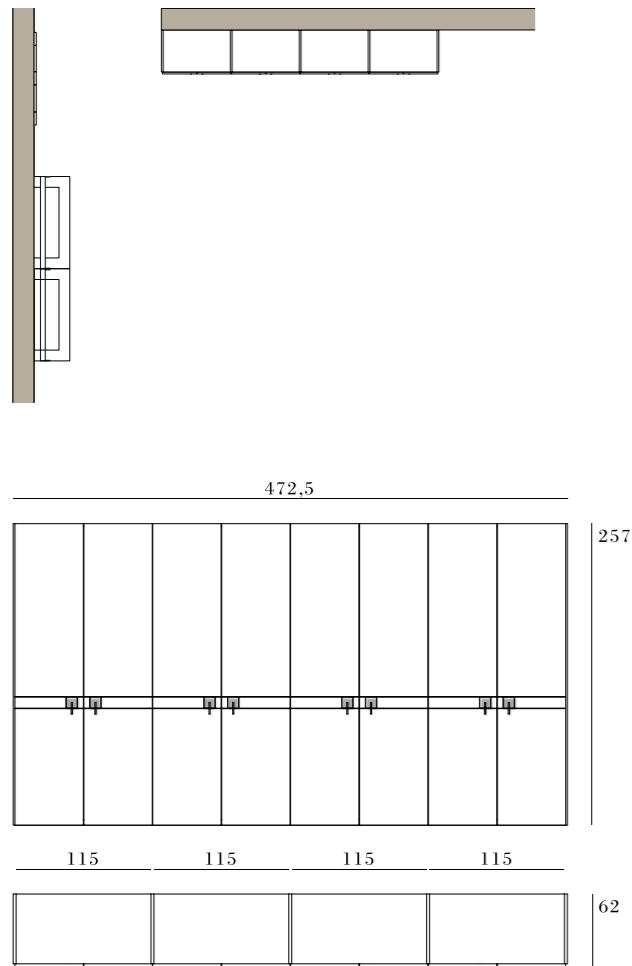




# Wardrobe #08

---

## CONTEMPORARY



**Miller battente**  
*Hinged Miller*

***In questo ambiente:***  
armadio anta Miller apertura battente,  
comò Artic, specchiere Form.

***In the room:***  
wardrobe with Miller hinged door,  
Artic chest of drawers, Form mirrors.



**Armadio anta Miller apertura battente**\_frassino tinto Terra FT03, maniglia integrata finitura Metal Brown ME04.  
**Comò Artic**\_scocca laccato opaco Visone LO05, basamento e cassettoni frassino laccato poro aperto Grafite PA10.  
**Specchiere esagonali Form**\_E65 e E98.

*Wardrobe with Miller hinged door\_Terra FT03 stained ash, Metal Brown ME04 built-in handles. Artic chest of drawers\_Visone LO05 matte lacquer finish and Grafite PA10 open pore lacquered ash. Form E65 and E98\_hexagonal mirrors.*





Wardrobe #08

**Armadio anta Miller apertura battente**\_frassino tinto Terra FT03, maniglia integrata finitura Metal Brown ME04. Finitura interni in Tecno Pelle, attrezzatura interna costituita da vassoi e porta pantaloni estraibili.

*Wardrobe with Miller hinged door\_Terra FT03 stained ash, Metal Brown ME04 built-in handles. Internal finishing in Tecno Pelle. Details of the internal equipment with pull-out tray and trouser rack in Metal Grey finish.*

simplicity

La *maniglia Miller* è l'ideale *sintesi di ricercatezza e semplicità*, nel dettaglio è proposta con vaschetta e astina in finitura Metal Brown ma può essere realizzata in tutte le tonalità laccate opaco.

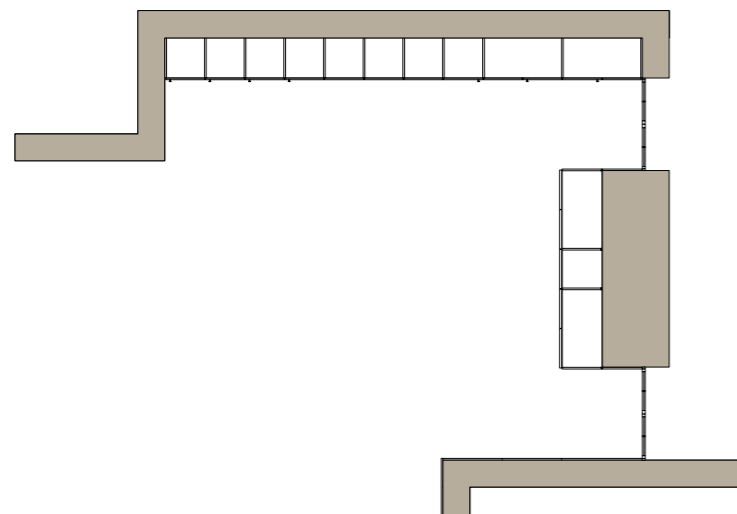
*Miller handle is perfect synthesis of elegance and simplicity; in detail it is proposed with a Metal Brown finish inside and little rod but it can be realized in all the matt lacquered colors.*



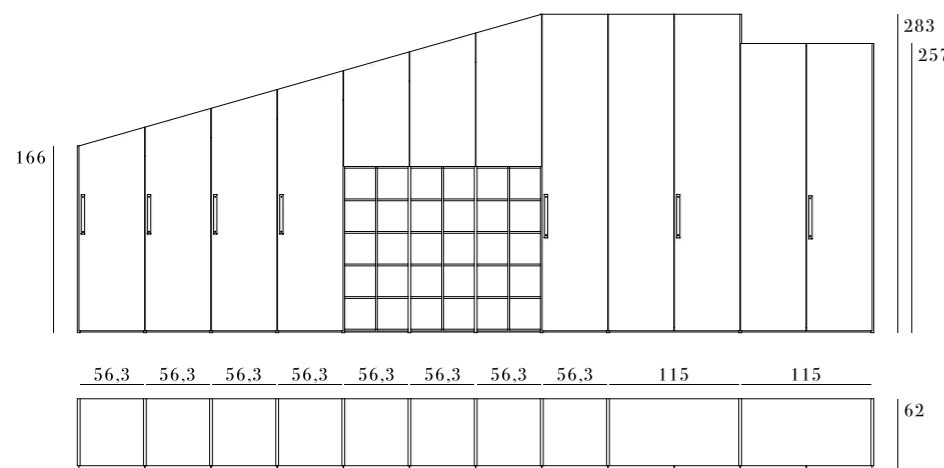


# Wardrobe #09

## CONTEMPORARY



707.9



**Linea battente - Velo battente**  
*Hinged Linea - hinged Velo*

***In questo ambiente:***  
 armadio anta Linea apertura  
 battente, armadio anta Velo  
 apertura battente.

***In the room:***  
 wardrobe with Linea hinged door,  
 wardrobe with Velo hinged door.





**Armadio anta Linea apertura battente**\_laccato opaco Ferro LO09, maniglia MN34 finitura Peltro ME06, vano giorno libreria, frassino tinto Roccia FT05. **Armadio anta Velo apertura battente**\_ telaio finitura Metal Grey ME03 e vetro Trasparente Fumè VT01, fianchi laccato opaco Ferro LO09.

*Wardrobe with Linea hinged door\_Ferro LO09 matte lacquer finish, Peltro ME06 finish MN34 handle, open unit with shelves, Roccia FT05 stained ash. Wardrobe with Velo hinged door\_ Metal Grey ME03 frame and Transparent Fumè VT01 glass, Ferro LO09 matte lacquer finish side panel.*





Trasparenza delicata,  
illuminazione integrata.

*Delicate transparency,  
integrated lighting.*

**Armadio anta Velo apertura battente,** telaio finitura Metal Grey ME03 e vetro Trasparente Fumè VT01, fianchi laccato opaco Ferro LO09.

L'anta Velo *lascia intravedere delicatamente l'interno dell'armadio* ove per un'ulteriore *effetto di trasparenza* tutti i ripiani sono in vetro Trasparente Fumè con telaio finitura Metal Grey ME03 e *illuminazione led integrata*.

*Wardrobe with Velo hinged door\_Metal Grey ME03 frame and Transparent Fumè VT01 glass, Ferro LO09 matte lacquer finish side panel.*

*Velo door allows a gentle glimpse into the wardrobe, Transparent Fumè glass shelves afford a further transparency effect, Metal Grey ME03 painted frame with built-in led lamps.*



industrial chic

Soluzione a misura con l'armadio *configurazione mansarda*, per un perfetto inserimento anche negli spazi più difficili. Gli *elementi libreria in frassino* tinto spezzano la monotonia della lunga parete armadio. La maniglia MN34 in peltro sfumato con viti esagonali a vista denota un gusto "industrial chic".

*Wardrobe configuration angled to sit under a sloping ceiling, making it perfect fit even in the most awkward spaces. The bookcase units break the monotony of the long wardrobe. The bookcase units break the monotony of the long wardrobe. The Peltro finish MN34 handle with exposed hexagonal screws denotes an "industrial chic" taste.*

**Armadio anta Linea apertura battente**\_laccato opaco Ferro LO09, maniglia MN34 finitura Peltro ME06, vano giorno libreria, frassino tinto Roccia FT05.  
*Wardrobe with Linea hinged door\_Ferro LO09 matte lacquer finish, Peltro ME06 finish MN34 handle, open unit with shelves, Roccia FT05 stained ash.*

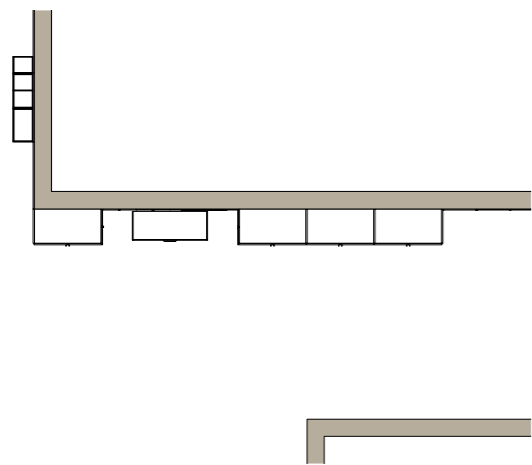




# Wardrobe # 10

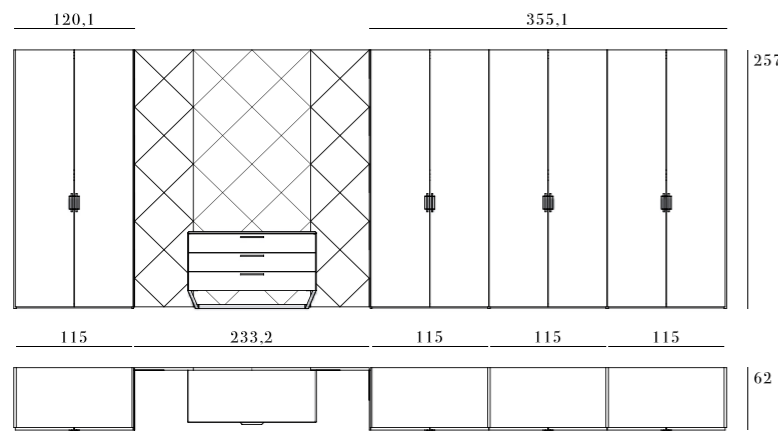
---

## CONTEMPORARY



### Linea battente

*Hinged Linea*



**In questo ambiente:**  
armadio anta Linea apertura battente,  
boiserie Linea, boiserie Gem,  
comò Ruben, specchiera Form,  
librerie pensili String.

**In the room:**  
wardrobe with Linea hinged door,  
boiserie Linea, boiserie Gem, Ruben chest  
of drawers, Form mirror, String wall book-  
shelves.



**Armadio anta Linea** apertura battente\_frassino tinto Roccia FT05, maniglia MN41 finitura Metal Brown ME04 con astina Bronzo ME02. **Boiserie Linea**\_frassino tinto Roccia FT05. **Boiserie Gem**\_laccato opaco Ferro LO09. **Comò Ruben**\_frassino tinto Roccia FT05, basamento, maniglie e profilo fianco in metallo finitura Bronzo ME02. **Specchiera rotonda**\_Form R80. **Librerie pensili**\_String in metallo finitura Bronzo ME02, ripiani similpelle Vintage Tortora E4G9.

*Wardrobe Linea hinged door\_Roccia FT05 stained ash, Metal Brown ME04 with Bronzo ME02 rod finish MN41 handle. Boiserie Linea\_Roccia FT05 stained ash. Boiserie Gem\_Ferro LO09 matte lacquer finish. Ruben chest of drawers\_Roccia FT05 stained ash, Bronzo ME02 handle, profiles and metal insert. Form R80\_round mirror. String wall bookshelves\_Bronzo ME02 metal frame, Vintage Tortora E4G9 imitation leather shelves.*

Ruben, modello depositato / registered model.





L'elegante disegno  
Gem definisce lo spazio.

*The elegant Gem design  
create the perfect space.*

**Boiserie Gem**\_laccato opaco Ferro LO09.  
**Comò Ruben**\_ frassino tinto Roccia FT05,  
basamento, maniglie e profilo fianco in  
metallo finitura Bronzo ME02. **Specchiera**  
**rotonda**\_Form R80.

La boiserie e i fianchi armadio con l'*elegante  
disegno Gem* definiscono lo spazio perfetto  
ove posizionare il comò Ruben.

*Boiserie Gem\_Ferro LO09 matte lacquer  
finish. Ruben chest of drawers\_ Roccia FT05  
stained ash, Bronzo ME02 handle, profiles  
and metal insert. Form R80\_round mirror.*

*Boiserie and side panels with the elegant Gem  
design created the perfect space to place the Ruben  
chest of drawers.*



Wardrobe #10

exclusivity

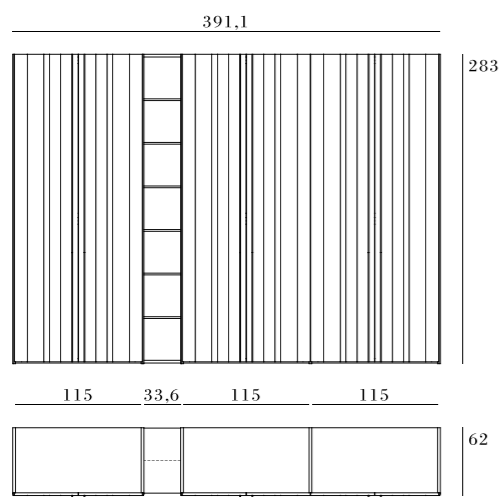
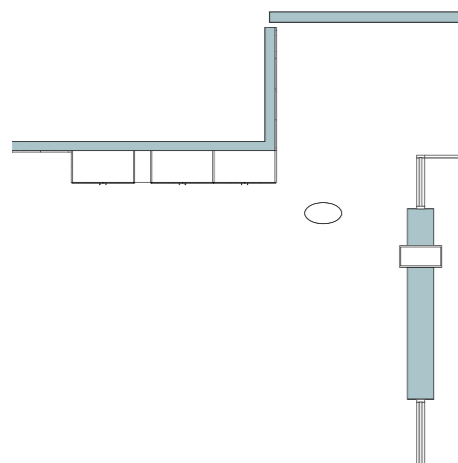
La *qualità* e la *varietà di materiali* e di finiture rendono l'*ambiente esclusivo*: legno di frassino tinto, morbido laccato opaco, metalli bronzati, interni in *Tecno Pelle*. La maniglia progettata dal designer *Michele Marcon* è perfettamente in sintonia con l'esclusività dell'ambiente.

*The quality and variety of materials and finishes makes the environment exclusive: stained ash wood, matt and soft lacquer, bronzed metals, Tecno Pelle interior fittings. The handle designed by the designer Michele Marcon is perfectly in tune with the exclusivity of the environment.*



# Wardrobe # 11

## T I M E L E S S



### Rod Plus battente *Hinged Rod Plus*

***In questo ambiente:***  
armadio anta Rod Plus apertura  
battente con vano giorno libreria,  
boiserie Stripe Rod, tavolino Cross  
Marmo.

***In the room:***  
wardrobe with Rod Plus hinged door and  
open unit with shelves, Stripe Rod boiserie,  
Cross Marmo small table.





**Armadio anta Rod Plus apertura battente**\_frassino tinto Roccia FT05, maniglia e inserto in metallo finitura Bronzo ME02, vano giorno libreria, laccato opaco Salvia OL07. **Boiserie Stripe Rod**\_frassino tinto Roccia FT05 con inserto in metallo finitura Bronzo ME02. **Tavolino Cross Marmo**\_struttura in metallo finitura Bronzo ME02, piano marmo Bianco Carrara.

*Wardrobe with Rod Plus hinged door\_Roccia FT05 stained ash, Bronzo ME02 handle and metal insert, open unit with shelves, Salvia OL07 matte lacquer finish. Stripe Rod boiserie\_Roccia FT05 stained ash, Bronzo ME02 metal insert. Cross Marmo small table\_Bronzo ME02 metal frame, Bianco Carrara marble top.*





Materiali preziosi,  
stile esclusivo.

*Precious materials,  
exclusive style.*

**Armadio anta Rod Plus apertura battente e boiserie Stripe Rod\_ frassino tinto Roccia FT05, maniglia e inserto in metallo finitura Bronzo ME02.**

Il susseguirsi di *sottili linee verticali incise sul legno*, che dall'armadio proseguono sui pannelli boiserie, è interrotto dal solo inserimento del *profilo bronzo*, che funge anche da maniglia. *Materiali preziosi* che definiscono uno *stile esclusivo*.

*Wardrobe with Rod Plus hinged door and Stripe Rod boiserie\_ Roccia FT05 stained ash, Bronzo ME02 handle and metal insert.*

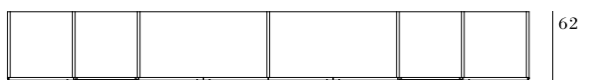
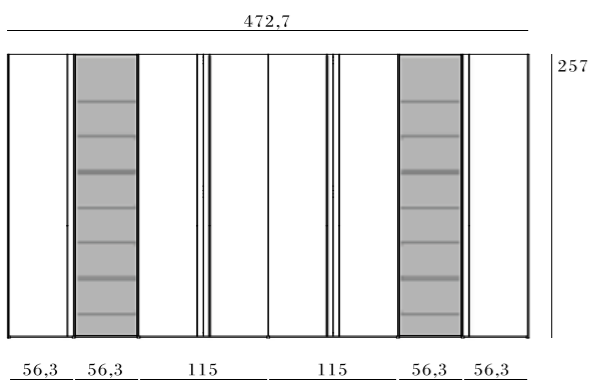
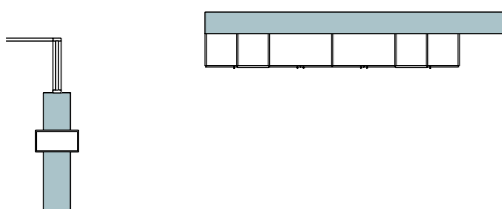
*The succession of thin vertical lines engraved on the wood from the wardrobe continue on the boiserie panels, they are interrupted by bronze profile insert, which also is an handle.*

*Precious materials that define an exclusive style.*



# Wardrobe # 12

## T I M E L E S S



**Rod battente - Velo battente**  
*Hinged Rod - hinged Velo*

***In questo ambiente:***  
 armadio anta Rod e anta Velo apertura battente, boiserie Linea, comò Ruben.

***In the room:***  
 wardrobe with Rod and Velo hinged doors, Linea boiserie, Ruben chest of drawers.





**Armadio anta Rod apertura battente**\_frassino tinto Creta FT04, maniglia e inserto in metallo finitura Bronzo ME02, anta Velo apertura battente, telaio finitura Metal Grey ME03 e vetro Trasparente Fumè VT01. **Boiserie Linea**\_frassino tinto Creta FT04. **Comò Ruben**\_laccato opaco Salvia OL07, basamento, maniglie e profilo fianco in metallo finitura Bronzo ME02.

*Wardrobe with Rod hinged door\_Creta FT04 stained ash, Bronzo ME02 handle and metal insert, and Velo hinged door, Metal Grey ME03 frame and Transparent Fumè VT01 glass. Linea boiserie\_Creta FT04 stained ash. Ruben chest of drawers\_Salvia OL07 matte lacquer finish, Bronzo ME02 metal base and handles.*



trasparenza

Abbinamento tra *tecnica* e *trasparenza*, un connubio tra *legno*, *metallo* e *vetro*. L'armadio ideale per chi ama esporre e vedere.

*A combination between technique and transparency, wood, metal and glass. The ideal wardrobe for those who love to see and be seen.*

**Armadio anta Rod apertura battente**\_frassino tinto Creta FT04, maniglia e inserto in metallo finitura Bronzo ME02, anta Velo apertura battente, telaio Metal Grey ME03 e vetro Trasparente Fumè VT01.

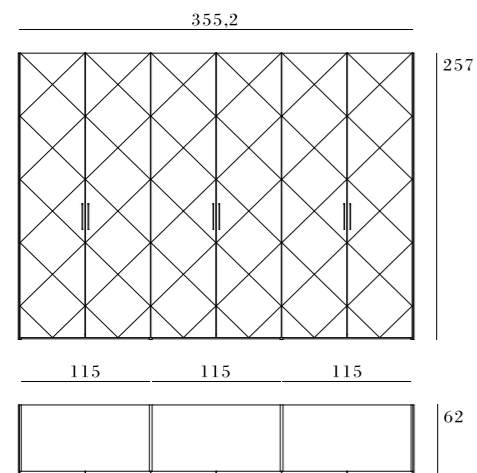
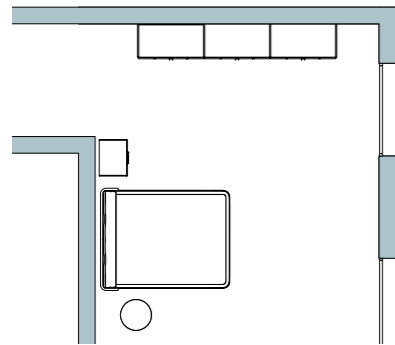
*Wardrobe with Rod hinged door\_Creta FT04 stained ash, Bronzo ME02 handle and metal insert, and Velo hinged door, Metal Grey ME03 frame and Transparent Fumè VT01 glass.*





## Wardrobe # 13

T I M E L E S S



### Gem Battente *Hinged Gem*

***In questo ambiente:***  
armadio anta Gem apertura battente,  
letto Dedalo Belt, tavolino Cross  
Vassoio, panca Ruben.

***In the room:***  
wardrobe with Gem hinged door,  
Dedalo Belt bed, Cross Vassoio small  
table, Ruben bench.





Armadio anta Gem apertura battente\_laccato opaco Muschio OL08, maniglie MN33 finitura Bronzo ME02. Letto Dedalo Belt\_frassino tinto Carbone FT06, inserto Belt in similpelle Vintage Piombo E2E3. Tavolino Cross Vassoio\_struttura in metallo finitura Bronzo ME02, piano laccato opaco Grafite OL10. Panca Ruben\_tessuto Sweet Oliva S070, basamento in metallo finitura Bronzo ME02.

Wardrobe with Gem hinged door\_Muschio OL08 matte lacquer finish, Bronzo ME02 finish MN33 handles. Dedalo Belt bed\_Carbone FT06 stained ash, Vintage Piombo E2E3 imitation leather Belt. Cross Vassoio small table\_Bronzo ME02 metal frame, Grafite OL10 matte lacquer finish top. Ruben bench\_Sweet Oliva S070 fabric, Bronzo ME02 metal base.

Gem, modello depositato / registered model.





Armadio anta Gem apertura battente\_laccato opaco Muschio OL08, maniglie MN33 finitura Bronzo ME02.  
Wardrobe with Gem hinged door\_Muschio OL08 matte lacquer finish, Bronzo ME02 finish MN33 handles.

quilted

*Linee sapientemente lavorate* si intrecciano nelle ante e nei fianchi dell'armadio Gem creando un sorprendente *effetto trapuntato*.

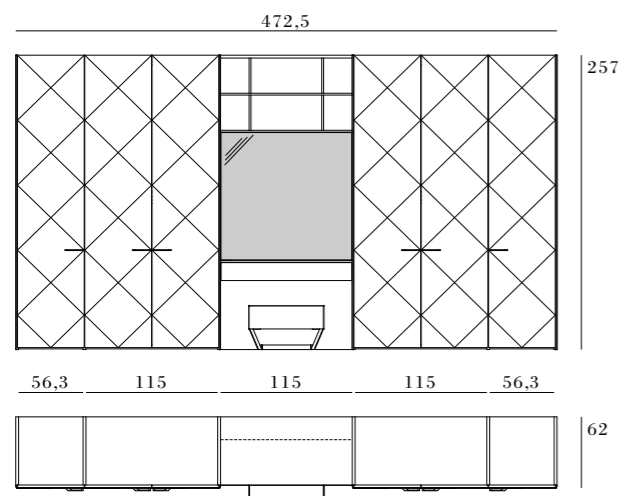
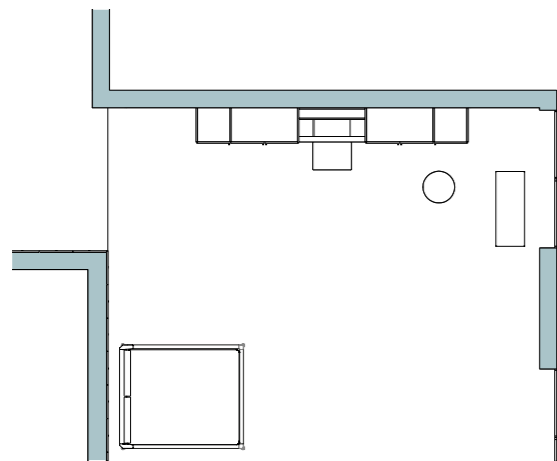
*Wisely worked lines intertwine in the Gem's wardrobe doors and sides creating a surprising quilted effect.*





## Wardrobe # 14

### T I M E L E S S



#### Gem Battente *Hinged Gem*

***In questo ambiente:***  
armadio anta Gem apertura battente  
con elemento toilette, boiserie Gem,  
letto Dedalo Belt, tavolino Cross  
Marmo, pouf e panca Ruben.

***In the room:***  
wardrobe with Gem hinged door and  
toilette element, boiserie Gem, Dedalo Belt  
bed, Cross Marmo small table,  
Ruben pouf and bench.





Armadio anta Gem apertura battente\_laccato opaco Crema OL03, maniglie MN30 finitura Metal Brown ME04. Tavolino Cross Marmo\_struttura in metallo finitura Bronzo ME02, piano marmo Bianco Carrara. Pouf e panca Ruben\_similpelle Vintage Camoscio E5EL, basamento in metallo finitura Bronzo ME02.

Wardrobe with Gem hinged door\_Crema OL03 matte lacquer finish, Metal Brown ME04 finish MN30 handles. Cross Marmo small table\_Bronzo ME02 metal frame, Bianco Carrara marble top. Ruben pouf and bench\_Vintage Camoscio E5EL imitation leather. Bronzo ME02 metal base.

Gem, modello depositato / registered model.





## Uno spazio al servizio dei propri desideri.

*A space furnished according  
to one's desires.*



**Armadio anta Gem apertura battente\_**  
laccato opaco Crema OL03, maniglie MN30  
finitura Metal Brown ME04.

**Letto Dedalo Belt\_frassino tinto Creta**  
FT04, cuscini testiera e inserto Belt in simil-  
pelle Vintage Camoscio E5EL.

**Cabina armadio e isole centrali First\_**  
in finitura Tecno Pelle.

*Wardrobe with Gem hinged door\_Crema OL03  
matte lacquer finish, Metal Brown ME04 finish  
MN30 handles. Dedalo Belt bed\_Creta FT04  
stained ash, headboard cushions and Belt in Vin-  
tage Camoscio E5EL imitation leather. First walk-in  
closet and islands\_dresse in Tecno Pelle finish.*

first wardrobes system



Wardrobe #14

Armadio anta Gem apertura battente con elemento toilette\_ laccato opaco Crema OL03. Pouf Ruben, similpelle Vintage Camoscio E5EL, basamento in metallo finitura Bronzo ME02. Wardrobe with Gem hinged door and toilette element\_ Crema OL03 matte lacquer finish. Ruben pouf, Vintage Camoscio E5EL imitation leather, Bronzo ME02 metal base.

## make up

L'armadio è anche *toilette per il trucco*, con *specchio*, illuminazione a *led* e pratico *cassetto* rivestito in *pelle*. Una soluzione moderna ma dall'aspetto *elegante e raffinato*.

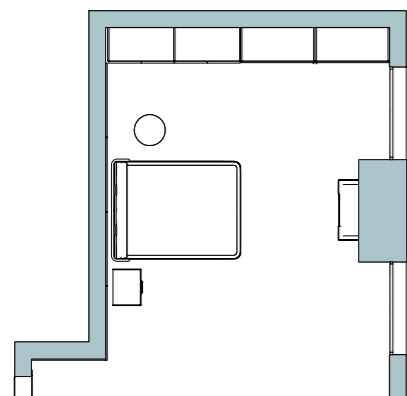
The wardrobe is also a *make-up toilet*, with a *mirror*, *led lighting* and a *practical drawer* covered in *leather*. A modern solution with an *elegant and refined appearance*.



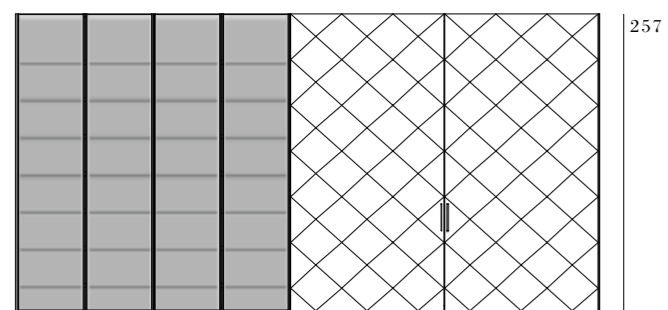


# Wardrobe # 15

## T I M E L E S S



501,6



257

115 115 127,5 127,5

63

62,7

**Velo battente - Gem complanare**  
*Hinged Velo - coplanar Gem*

***In questo ambiente:***  
armadio anta Velo apertura battente  
e anta Gem apertura complanare,  
boiserie Gem, letto Royal, comodino  
Ruben, tavolino Cross Vassoio.

***In the room:***  
wardrobe with Velo hinged door and Gem  
coplanar door, Linea boiserie, Royal bed,  
Ruben bedside unit, Cross Vassoio small  
table.





first wardrobes system

Wardrobe #15

**Armadio anta Velo** apertura battente\_telaio Metal Grey ME03 e vetro Trasparente Fumè VT01, anta Gem apertura complanare, laccato opaco Grafite OL10, maniglia MN33 finitura Bronzo ME02. **Boiserie Gem**\_laccato opaco Grafite OL10. **Letto Royal con giroletto C**\_frassino tinto Roccia FT05, testiera e giroletto in similpelle Vintage Tortora E4G9. **Comodino Ruben**\_frassino tinto Roccia FT05, basamento, maniglie e profilo fianco in metallo finitura Bronzo ME02.

*Wardrobe Velo hinged door\_Metal Grey ME03 frame and Transparent Fumè VT01 glass, Gem coplanar door, Grafite OL10 matte lacquer finish, Bronzo ME02 finish MN33 handles. Gem boiserie\_Grafite OL10 matte lacquer finish. Royal Bed with bedframe C\_Roccia FT05 stained ash, headboard and bedframe in Vintage Tortora E4G9 imitation leather. Ruben bedside unit\_Roccia FT05 stained ash, Bronzo ME02 metal base and handles.*

Gem e Ruben, modelli depositati / registered models.







Vetro riflettente,  
delicate luci interne.

*Reflecting glass,  
gently interior lights.*

**Armadio anta Velo apertura battente\_** telaio Metal Grey ME03 e vetro Riflettente Grigio VT02. **Boiserie Gem\_** laccato opaco Grafite OL10.

Il **vetro riflettente** nelle ante Velo cela alla vista il contenuto dell'armadio, che riappare delicatamente all'accensione delle **luci interne**.

*Wardrobe Velo hinged door\_Metal Grey ME03 frame and Reflectiv Grigio VT02 glass. Gem boiserie\_Grafite OL10 matte lacquer finish.*

*The reflecting glass in the Velo doors concealed from view the contents of the wardrobe, which reappears gently when the interior lights are turned on.*



**Armadio anta Velo apertura battente\_** interni in finitura Tecno Pelle. Le ante, i cassetti e i vassoi estraibili sono dotati di chiusura rallentata per il massimo confort. Cassettiere in finitura Tecno Pelle, ripiani in vetro Trasparente Fumè VT01 con telaio verniciato Metal Grey ME03 e luce led integrata. Vassoi estraibili con telaio verniciato Metal Grey ME03 e fondo con tappetino in similpelle, vaschette porta oggetti e porta gioielli con struttura rivestita in similpelle, esternamente grigio scuro e internamente grigio chiaro.

*Wardrobe Velo hinged door\_ interior fittings in Tecno Pelle finish. Doors, drawers and pull-out shelves are equipped with slow closing for maximum comfort. Chest of drawers in Tecno Pelle finish, Transparent Fumè VT01 glass shelves with Metal Grey ME03 frame and integrated led light. Pull-out shelves with Metal Grey ME03 frame and bottom with imitation leather, boxes for objects and jewelry holder with structure covered in imitation leather, dark gray outside and light gray inside.*







*Natural Chic*



*Contemporary*



*Timeless*

## ANTA SCORREVOLE

### *Sliding door*

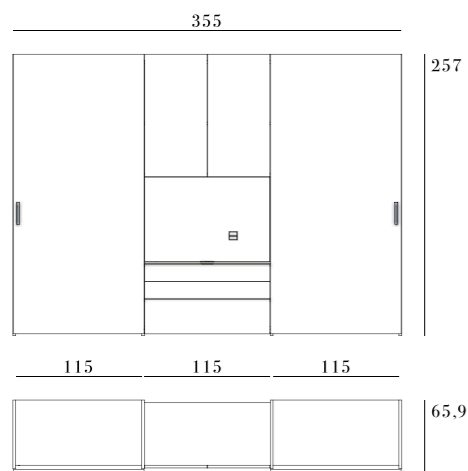
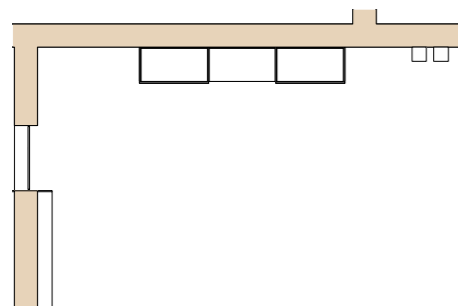
L'armadio con *anta scorrevole* viene interpretato in modo nuovo e non solo nella zona notte, ma ovunque nella casa la sua *funzione di contenitore* possa esprimersi in libertà. L'armadio *protagonista della scena*, l'attore principale di un progetto abitativo.

*The wardrobe with sliding door is interpreted in a new way and not only in the sleeping area, but everywhere in the home its function as a container can express itself freely. The wardrobe is protagonist of the scene, the main actor of a home project.*

# Wardrobe # 16

---

## NATURAL CHIC



### Urban scorrevole

*Sliding Urban*

***In questo ambiente:***  
armadio anta Urban apertura scorrevole, librerie pensili Random.

***In the room:***  
wardrobe with Urban sliding door,  
Random wall bookshelves.









**Particolare della maniglia scavata nell'anta** con cover interna in similpelle Vintage Tortora E4G9.  
*The handle of the Urban door is formed directly in the panel and have cover in soft imitation leather Vintage color Tortora E4G9.*



tv panel

Le ante scorrono agevolmente sopra l'*elemento centrale* con pannello TV orientabile, *cassetti e antine apertura push-pull* in finitura *frassino laccato poro aperto* Ferro PA09, variante con pannello TV e cassetti in frassino tinto Roccia FT05.

*The doors slide easily over the central module with adjustable TV panel, push-pull opening drawers and doors, finish in Ferro PA09 open pore lacquered ash, variant with TV panel and drawers in Roccia FT05 stained ash.*

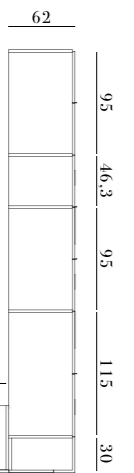
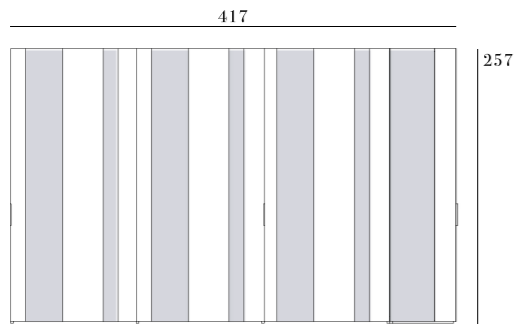
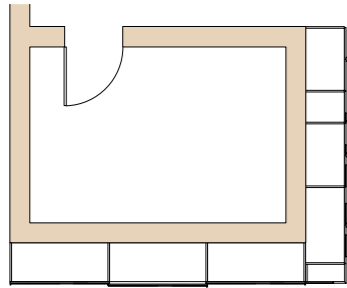




# Wardrobe # 17

---

## NATURAL CHIC



**City scorrevole - City battente - Linea battente**  
*Sliding City - Hinged City - Hinged Linea*

***In questo ambiente:***  
armadio anta City apertura scorrevole,  
armadio anta City e anta Linea apertura battente.

***In the room:***  
wardrobe with City sliding door, wardrobe with  
City and Linea hinged door.



**Armadio anta City apertura scorrevole**\_frassino tinto Sabbia FT01, fasce in vetro laccato Bianco Caldo VL02, maniglia MN50 laccata. **Armadio anta City e anta Linea apertura battente**\_frassino tinto Sabbia FT01, fasce in vetro laccato Bianco Caldo VL02, maniglia MN50 laccata.

*Wardrobe with City sliding door\_Sabbia FT01 stained ash, bands in Bianco Caldo VL02 lacquered glass, MN50 handle. Wardrobe with City and Linea hinged door\_Sabbia FT01 stained ash, bands in lacquered glass Bianco Caldo VL02, MN50 handle.*







Dedicato ai giovani amanti  
del design nordico.

*For young lovers of nordic design.*

**Armadio anta City e anta Linea apertura  
battente\_**frassino tinto Sabbia FT01,  
fasce in vetro laccato Bianco Caldo  
VL02, maniglia MN50 laccata.

Per giovani amanti del *design nordico*,  
una proposta dinamica che gioca con il *movi-  
mento delle fasce* in vetro e con la tavolozza  
dei colori.

*Wardrobe with City and Linea hinged door\_*  
*Sabbia FT01 stained ash, bands in Bianco*  
*Caldo VL02 lacquered glass, MN50 handle.*

*For young lovers of nordic design, hereis*  
*a dynamic idea that plays with the movement*  
*of lines and with colour palette shades.*

an unusual solution

Nel particolare il **modulo terminale** in frassino tinto Sabbia FT01 con **anta in vetro** laccato Bianco Caldo VL02. **Un'insolita soluzione ad angolo inverso** ove il terminale è elemento di unione tra l'armadio scorrevole e l'armadio battente.

**Alternanza tra la matericità del vero legno e la luminosità del vetro laccato**, discreta la presenza della **maniglia laccata MN50 sul bordo anta**.

*In particular the end unit in Sabbia FT01 stained ash and with door in Bianco Caldo VL02 lacquered glass. An unusual solution with an inverse angle where the end unit is an element of union between the sliding wardrobe and the hinged wardrobe. Alternation between the materiality of real wood and the brightness of the lacquered glass, inconspicuous the MN50 lacquered handle on the door edge.*

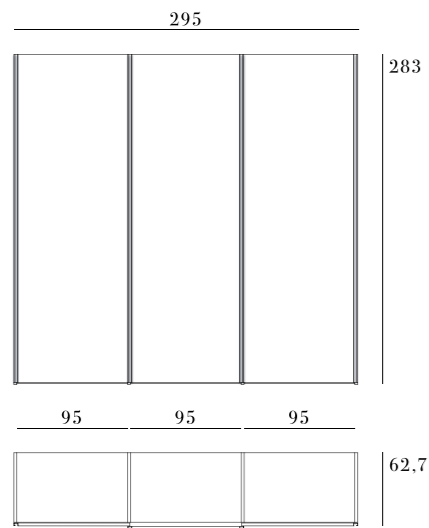
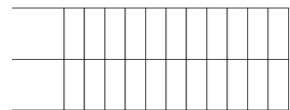
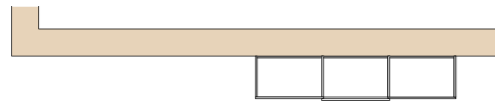




# Wardrobe # 18

---

## NATURAL CHIC



**Free scorrevole**  
*Sliding Free*

***In questo ambiente:***  
armadio anta Free apertura scorrevole.

***In the room:***  
wardrobe with Free sliding door.



**Armadio anta Free apertura scorrevole**\_laccato opaco Canapa LO04, maniglia integrata MN52 finitura laccato opaco Canapa LO04.

Il **profilo maniglia è applicato sullo spessore** in perfetta tonalità con il colore dell'anta. L'armadio scorrevole è realizzato nella massima altezza.

*Wardrobe with Free sliding door\_Canapa OL04 matte lacquer finish, Canapa OL04 finish MN52 handle.*

*Handle profile concealed in door thickness, a perfect color match with that of the door. The sliding wardrobe is made in the maximum height.*

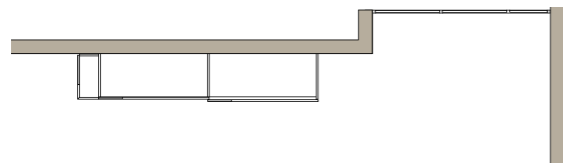




# Wardrobe # 19

---

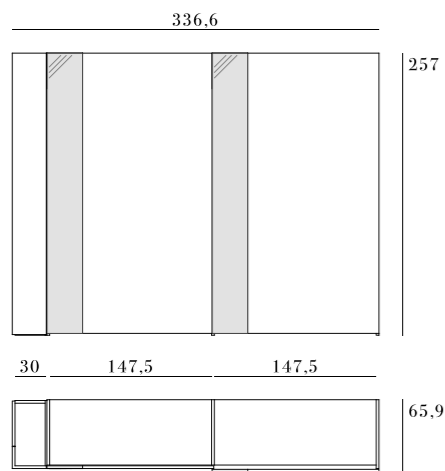
## CONTEMPORARY



**Side scorrevole**  
*Sliding Side*

***In questo ambiente:***  
armadio anta Side apertura scorrevole,  
comò Artic.

***In the room:***  
wardrobe with Side sliding door;  
Artic chest of drawers.





**Armadio anta Side apertura scorrevole**\_frassino laccato poro aperto Grafite PA10, fascia laterale specchio Fumè SP02, maniglia MN50. **Comò Artic**\_scocca laccato opaco Visone LO05, basamento e cassettoni frassino laccato poro aperto Grafite PA10.

*Wardrobe with Stripe sliding door\_Grafite PA10 open pore lacquered ash, Fumè SP02 mirror side bands, MN50 handle. Artic chest of drawers\_Visone LO05 matte lacquer finish and Grafite PA10 open pore lacquered ash.*



first wardrobes system



Wardrobe #19

**Armadio anta Stripe apertura scorrevole\_**  
finitura interni in Tecno Pelle, cassettiera con  
frontali cassetto in vetro Trasparente Fumè VT01.  
*Wardrobe with Stripe sliding doors\_ internal fini-  
shing in Tecno Pelle, chest of drawers in lacquered  
finish with drawer fronts in Transparent Fumè  
VT01 glass.*

**rhythmic**

La *sequenza ritmica di materiali* - legno laccato e  
specchio, continua sul lato con il pratico elemento ter-  
minale con **anta a specchio** apribile tramite push-pull.

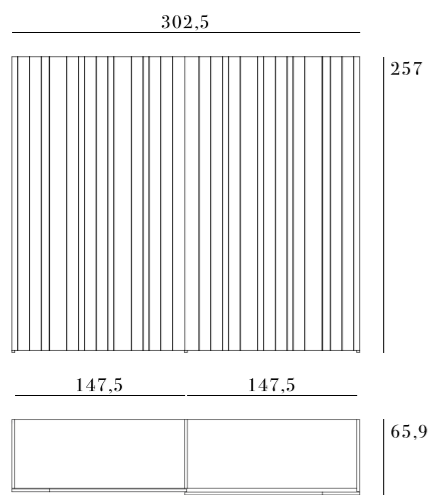
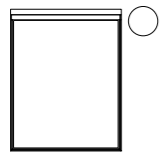
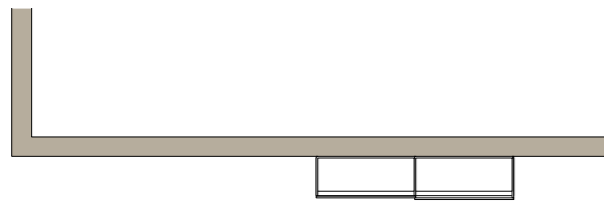
*The rhythmic sequence of materials - lacquered wood and mirror  
continues on the side with the practical end unit with mirror door  
that can be opened by push-pull.*



# Wardrobe # 20

---

## CONTEMPORARY



### Stripe scorrevole

*Sliding Stripe*

***In questo ambiente:***  
armadio anta Stripe apertura scorrevole, letto Cronos, Tavolino Cross.

***In the room:***  
wardrobe with Stripe sliding door, Cronos bed, Cross small table.





**Armadio anta Stripe** apertura scorrevole\_frassino tinto Terra FT03, maniglia integrata MN09 finitura Nero Opaco ME01. **Letto Cronos**\_frassino tinto Terra FT03, luci led con dimmer. **Tavolino Cross**\_struttura metallo Nero Opaco ME01, piano laccato opaco Muschio OL08

*Wardrobe with Stripe sliding door\_Terra FT03 stained ash, Nero Opaco ME01 built-in MN09 handle. Cronos bed\_Terra FT03 stained ash, headboard with led light. Cross small table\_Nero Opaco ME01 metal frame, Muschio OL08 matte lacquer finish top.*



tecnopelle

Finitura interni in **Tecno Pelle**, che ricorda la **lavorazione martellata** della vera pelle. La **lampada led integrata** sul fianco diffonde una morbida luce calda. La maniglia MN09 è inserita nello spessore dell'anta.

*Internal finishing in Tecno Pelle, reminiscent of hammered genuine leather. The built-in led lamp on the side panel shed soft light. MN09 handle is inserted into the thick door.*

**Armadio anta Stripe apertura scorrevole**\_frassino tinto Terra FT03, maniglia integrata MN09 finitura Nero Opaco ME01.  
*Wardrobe with Stripe sliding door\_Terra FT03 stained ash, Nero Opaco ME01 built-in MN09 handle.*

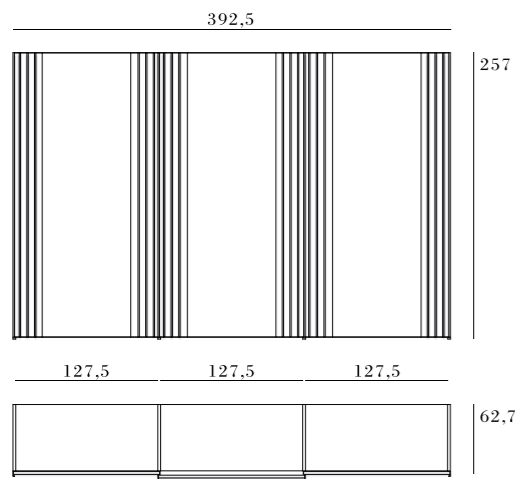
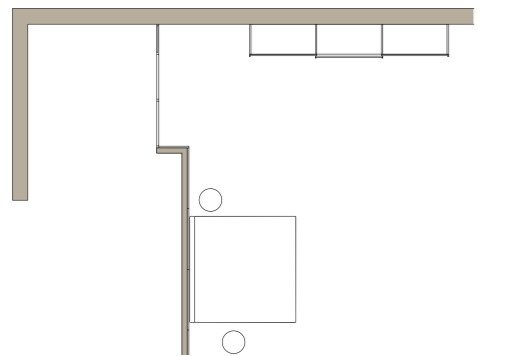




# Wardrobe # 21

---

## CONTEMPORARY



### Madame scorrevole *Sliding Madame*

***In questo ambiente:***  
armadio anta Madame apertura scorrevole, boiserie bassa Linea, Sommier, tavolini Cross Vassoio.

***In the room:***  
wardrobe with Madame sliding door, low boiserie Linea, Sommier bed, Cross Vassoio small tables.



**Armadio anta Madame apertura scorrevole**\_laccato opaco Muschio OL08, maniglia, profili esterni e inserti in metallo finitura Bronzo ME02. **Boiserie bassa Linea con led integrato**\_frassino tinto Terra FT03. **Sommier giroletto C**\_frassino tinto Terra FT03 e fasce in tessuto Sweet Oliva S070. **Tavolini Cross Vassoio**\_struttura in metallo finitura Nero Opaco ME01, piano in laccato opaco Salvia OL07 e piano in laccato opaco Grafite OL10.

*Wardrobe Madame sliding door\_Muschio OL08 matte lacquer finish, Bronzo ME02 handle, profiles and metal insert.  
Low boiserie Linea with built in led light\_Terra FT03 stained ash. Sommier with bedframe C\_Terra FT03 stained ash and Sweet Oliva S070 fabric. Cross Vassoio small tables\_Nero Opaco ME01 metal frame, Salvia OL07 and Grafite OL10 matte lacquer finish tops.*





bronze

Particolare *elementi decorativi in metallo bronzo* inseriti nel pannello anta, sinergia tra artigianalità e valenza estetica.

*In detail the bronze metal decorations inserted in the door panel, synergy between craftsmanship and aesthetic value.*

**Armadio anta Madame apertura scorrevole**\_laccato opaco Muschio OL08.

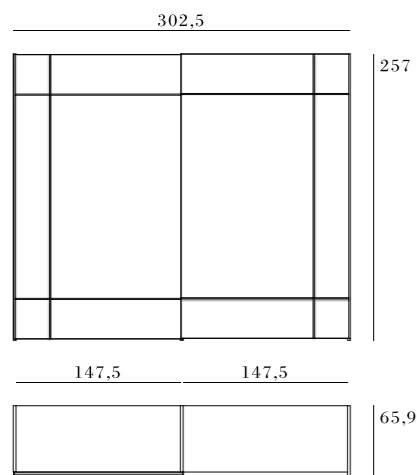
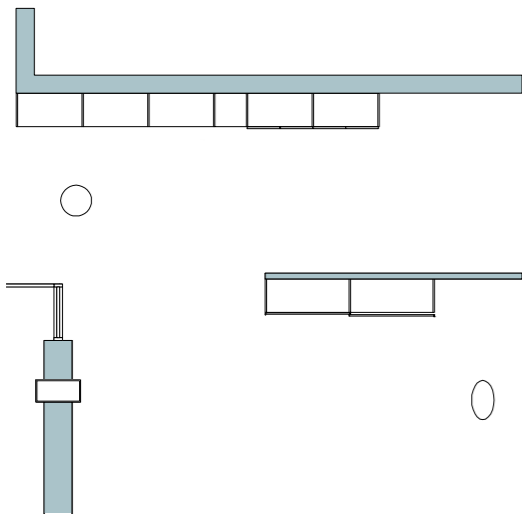
**Boiserie bassa Linea**\_frassino tinto Terra FT03. **Sommier giroletto C**\_frassino tinto Terra FT03 e fasce in tessuto Sweet Foresta S071.

*Wardrobe Madame sliding door\_Muschio OL08 matte lacquer finish. Low boiserie Linea\_with built in led light, Terra FT03 stained ash. Sommier with bedframe\_Terra FT03 stained ash and Sweet Foresta S071 fabric.*



# Wardrobe #22

## T I M E L E S S



### Reverse scorrevole *Sliding Reverse*

***In questo ambiente:***  
armadio anta Reverse apertura scorrevole, tavolini Cross e Cross Vassoio, cabina armadio First.

***In the room:***  
wardrobe with Reverse sliding door, Cross and Cross Vassoio small tables, First walk-in closet.





Armadio anta Reverse apertura scorrevole\_laccato lucido Fango LL13, maniglia, profili esterni e inserti in metallo finitura Bronzo ME02. Tavolino Cross rotondo\_struttura in metallo finitura Bronzo ME02, piano laccato opaco Fango LO06. Tavolino Cross Vassoio ovale\_struttura in metallo finitura Bronzo ME02, piano laccato opaco Blu Notte NCS S8010. Cabina armadio First\_in finitura Tecno Pelle, cassetti laccato opaco Fango LO06.

*Wardrobe Reverse sliding door\_Fango LL13 glossy lacquer finish, Bronzo ME02 handle, profiles and metal insert. Cross small table\_Bronzo ME02 metal frame, Fango LO06 matte lacquer finish top. Cross Vassoio small table\_Bronzo ME02 metal frame, Blu Notte NCS S8010 matte lacquer finish top. First walk-in closet\_in Tecno Pelle finish, Fango LO06 matte lacquer finish drawers.*





Wardrobe #22

**Armadio anta Reverse apertura scorrevole\_** ripiani portascarpe inclinati con profili battitacco verniciati Metal Grey ME03, ripiani in vetro Trasparente Fumè VT01 con telaio verniciato Metal Grey ME03 e luce led integrata. *Wardrobe Reverse sliding door\_ inclined shoe shelves with Metal Grey ME03 frames, Transparent Fumè VT01 glass shelves with Metal Grey ME03 frame and integrated led light.*

precious

Il gioco dei quadrati creato con *profili bronzo in rilievo*, la lunga *maniglia metallica integrata nell'anta* e la *finitura laccata lucida* rendono *unico e prezioso* questo armadio.

*The squares created with bronze profiles, the long metal handle integrated into the door and the glossy lacquered finish make this wardrobe unique and precious.*







*Natural Chic*



*Contemporary*



*Timeless*

## ANTA COMPLANARE

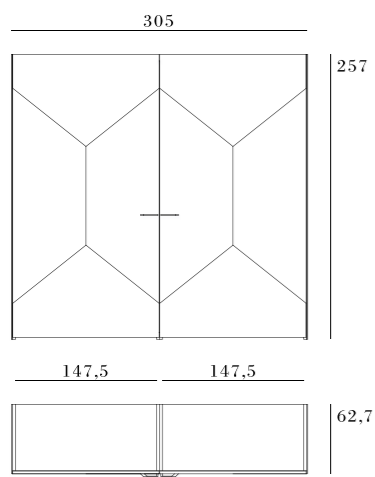
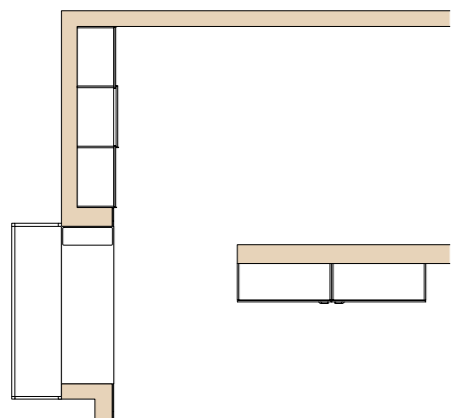
### *Coplanar door*

Il *valore dell'innovazione* in perfetto equilibrio tra *tradizione e modernità*. L'*armadio complanare* interpretato in composizioni lineari e in quelle più attrezzate: una rassegna varia e articolata, ma non esaustiva di un sistema dalle *potenzialità infinite*.

*The value of innovation in perfect balance between tradition and modernity. The coplanar wardrobe interpreted in linear compositions and in the most equipped ones: a varied, detailed, but by no means definitive overview of a system which offers infinite possibilities.*

## Wardrobe # 23

### NATURAL CHIC



#### **Ego complanare – Mirage scorrevole** *Coplanar Ego – Sliding Mirage*

***In questo ambiente:***  
armadio anta Ego apertura complanare,  
armadio Mirage apertura scorrevole,  
specchiera Form.

***In the room:***  
wardrobe with Ego coplanar door, wardrobe  
with Mirage sliding door, Form mirror.







diffused light

Lo *specchio è protagonista* principale grazie alla straordinaria capacità di *diffondere la luce* e dilatare lo spazio. *L'anta Mirage* è prevista anche in *vetro laccato*.

*Mirror is the main feature of the extraordinary capacity to diffuse light and expand space. Mirage door is also available with lacquered glass door.*

**Armadio Mirage apertura scorrevole**\_ante specchio Naturale SP01, fianchi in laccato opaco Bianco Puro OL01, maniglia integrata MN51 in finitura laccato opaco Bianco Puro OL01.

**Specchiera esagonale**\_Form E98.

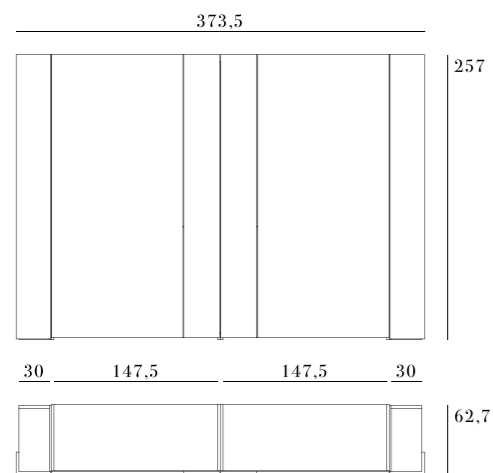
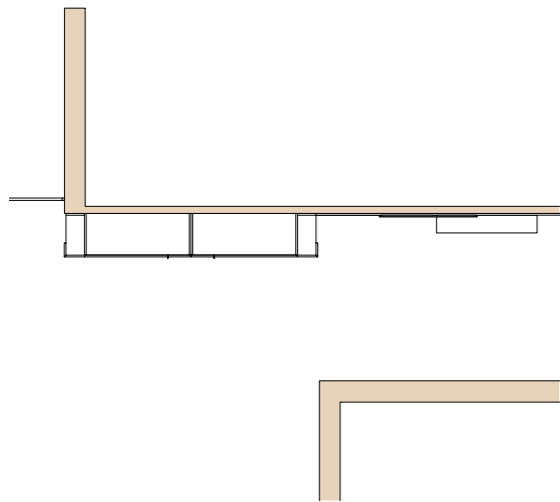
*Wardrobe Mirage sliding door\_Bianco Puro OL01 matte lacquer finish, doors with Naturale SP01 mirror, MN51 built-in handle in Bianco Puro OL01 matte lacquer finish. Form E98\_hexagonal mirror.*





## Wardrobe #24

### NATURAL CHIC



#### Rod Plus complanare *Coplanar Rod Plus*

***In questo ambiente:***  
armadio anta Rod Plus apertura  
complanare, boiserie Stripe, libreria  
pensile Random, specchiere Form.

***In the room:***  
wardrobe with Rod Plus coplanar door,  
Stripe boiserie, Random wall bookshelf,  
Form mirrors.



**Armadio anta Rod Plus apertura complanare**\_frassino laccato poro aperto Visone PA05, maniglia e inserto in metallo finitura Metal Grey ME03. **Elementi terminali**\_frassino tinto Creta FT04. **Boiserie Stripe**\_frassino tinto Creta FT04. **Librerie pensili Random**\_frassino tinto Creta FT04 e laccato opaco Canapa OL14. **Specchiere rotonde**\_Form R60 e R80.

*Wardrobe Rod Plus coplanar door\_Visone PA05 open pore lacquered ash, Metal Grey ME03 handle and metal insert. End units\_Creta FT04 stained ash. Stripe boiserie\_Creta FT04 stained ash. Random wall bookshelf\_Creta FT04 stained ash and Canapa OL14 matte lacquer finish. Form R60 and R80\_round mirrors.*





end unit

Il **terminale dell'armadio** diventa elemento di servizio alla zona ingresso per appendere i soprabiti e riporre le borse. **Funzionale e bello.**

*The end unit becomes a service element to the entrance area for hanging over coats and storing bags. Functional and beautiful.*

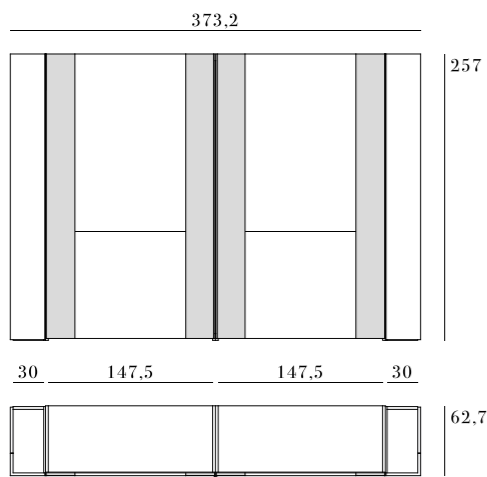
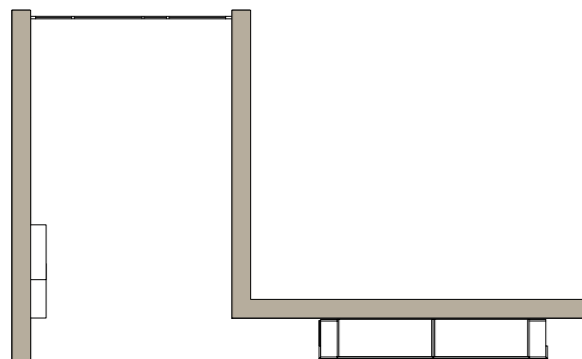
La zona ingresso si veste con la **boiserie Stripe** in frassino tinto Creta FT04, con le **specchiere rotonde Form** e la comoda **libreria Random** in frassino tinto Creta FT04 e laccato opaco Canapa OL14.

*The entrance area is dressed with the Stripe boiserie in Creta FT04 stained ash, with the Form round mirrors and the comfortable Random wall bookshelves in Creta FT04 stained ash and Canapa OL14 matt lacquer.*



# Wardrobe #25

## CONTEMPORARY



### Rail coplanare *Coplanar Rail*

***In questo ambiente:***  
armadio anta Rail apertura coplanare,  
librerie pensili Random.

***In the room:***  
wardrobe with Rail coplanar door,  
Random wall bookshelves.





**Armadio anta Rail apertura complanare**\_frassino tinto Carbone FT06, inserti in similpelle Vintage Mattone E5B1, maniglia e profili esterni in metallo finitura Bronzo ME02. **Librerie pensili Random**\_frassino tinto Carbone FT06 e laccato opaco Grafite OL10.

*Wardrobe Rail coplanar door\_Carbone FT06 stained ash, Vintage Mattone E5B1 imitation leather, Bronzo ME02 handle and metal profiles. Random wall bookshelves\_Carbone FT06 stained ash and Grafite OL10 matte lacquer finish.*





Wardrobe #25

**Armadio anta Rail apertura complanare\_** frassino tinto Carbone FT06, inserti in similpelle Vintage Mattone E5B1, maniglia e profili esterni in metallo finitura Bronzo ME02.  
*Wardrobe Rail coplanar door\_ Carbone FT06 stained ash, Vintage Mattone E5B1 imitation leather, Bronzo ME02 handle and metal profiles.*

sophisticated

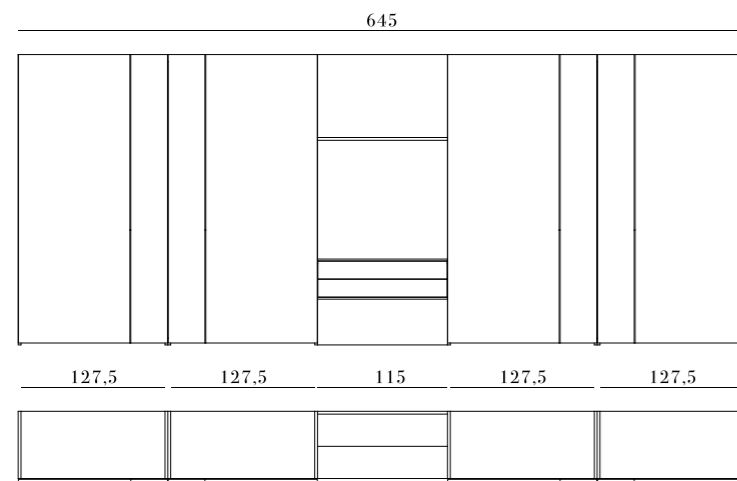
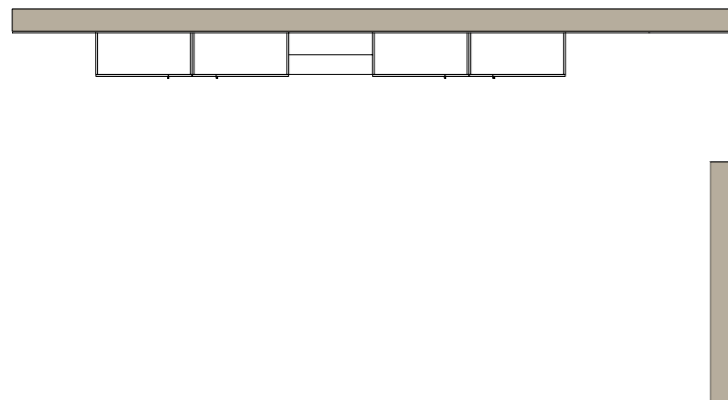
Terminale libreria e terminale scarpiera, *soluzioni innovative* per sfruttare al meglio lo spazio disponibile. Particolari sofisticati per l'anta Rail che crea un ambiente dinamico e raffinato: *inserti in similpelle* delineati da un' *impuntura, incisione orizzontale e profili perimetrali in metallo bronzo.*

*Library end unit and shoe rack end unit: innovative solutions to make the most of available space. Rail door with sophisticated details creates a dynamic and refined environment: imitation leather inserts outlined by topstitching, horizontal engraving and perimeter profiles in bronze metal.*



# Wardrobe # 26

## CONTEMPORARY



257  
**Rod complanare**  
*Coplanar Rod*

**In questo ambiente:**  
armadi anta Rod apertura complanare,  
boiserie Linea.

62.7  
**In the room:**  
wardrobes with Rod coplanar door,  
Linea boiserie.





first wardrobes system

Wardrobe #26

**Armadi anta Rod apertura complanare\_** laccato lucido Visone LL12 e frassino tinto Creta FT04, maniglia e inserto in metallo laccati. **Elemento con cassetti e boiserie** Linea\_frassino tinto Creta FT04.

*Wardrobes Rod coplanar door\_ Visone LL12 glossy lacquer finish and Creta FT04 stained ash, handle and metal insert in lacquer finish. Unit with drawers and Linea boiserie\_ Creta FT04 stained ash.*





Wardrobe #26

**Armadi anta Rod apertura complanare**\_tra gli armadi un elemento speciale con cassetti e schienale in frassino oppure a specchio, la mensola ha la luce led integrata.

*Wardrobes Rod coplanar door\_ between wardrobes there is a special unit with drawers and back in ash or mirrored, the shelf has integrated led light.*

## design

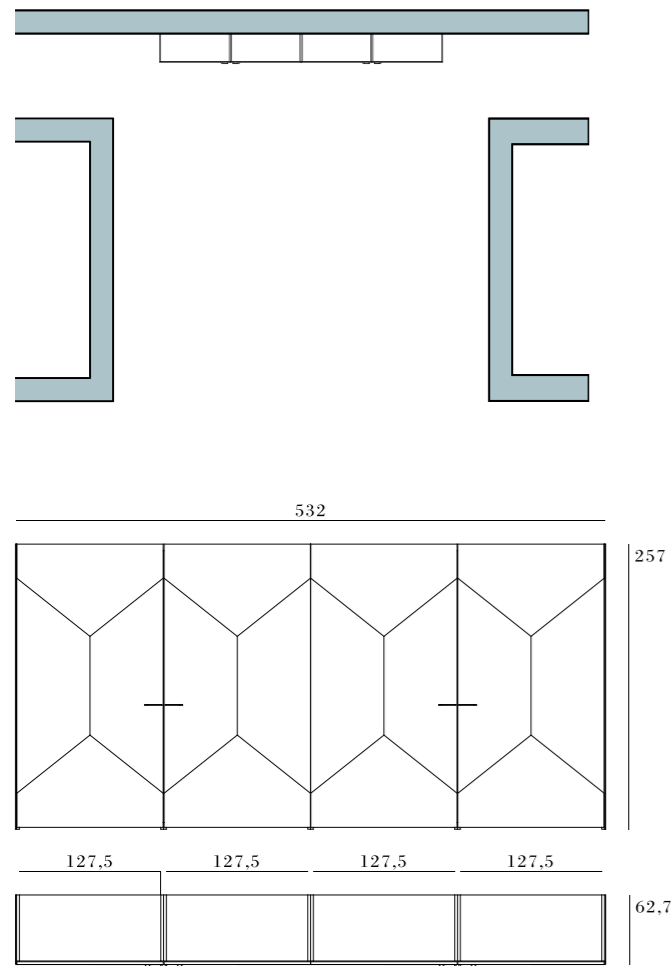
L'attenzione per i dettagli, l'imperativo dell'alta qualità, la ricerca di soluzioni di arredo dal **forte impatto estetico e funzionale**, sono le prerogative del modello Rod.

*Attention to detail, imperative for high quality, the search for design solutions with a strong visual and functional impact are the prerogatives of the Rod model.*



# Wardrobe # 27

## T I M E L E S S



### Ego Complanare *Coplanar Ego*

*In questo ambiente:*  
armadio anta Ego apertura complanare.

*In the room:*  
wardrobe with Ego coplanar door.





first wardrobes system

Wardrobe #27

Armadio anta Ego apertura complanare\_laccato opaco Fango OL06,  
maniglie MN30 finitura Metal Brown ME04.

Wardrobe Ego coplanar door\_Fango OL06 matte lacquer finish, handles MN30  
finish Metal Brown ME04.



technology

Elevata *tecnologia* del complanare ed *estetica* sono le caratteristiche di un armadio che esprime la sua decisa e *diversa personalità* rispetto agli altri. La *dinamica geometria* del frontale prosegue anche sui fianchi.

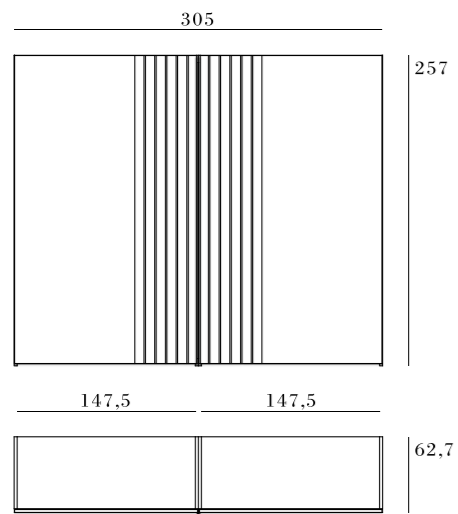
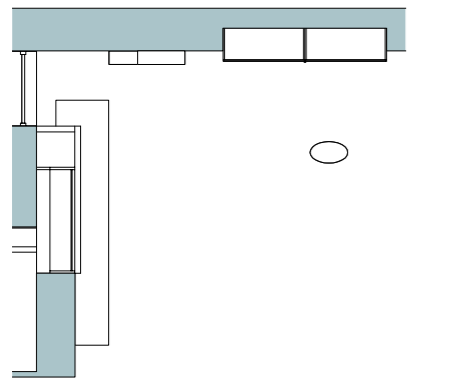
*Coplanar technology and beauty are the leading guides for our project, strong and yet different. The defining look of this wardrobe is its design.*

**Armadio anta Ego apertura complanare\_laccato opaco**  
Fango OL06, maniglie MN30 finitura Metal Brown ME04.  
*Wardrobe Ego coplanar door\_Fango OL06 matte lacquer finish,  
handles MN30 finish Metal Brown ME04.*



# Wardrobe #28

## TIMELESS



### Lord complanare *Coplanar Lord*

***In questo ambiente:***  
armadio anta Lord apertura complanare,  
tavolino Cross Marmo, librerie pensili  
String.

***In the room:***  
wardrobe with Lord coplanar door, Cross  
Marmo small table, String wall bookshelves.





first wardrobes system

Wardrobe #28

**Armadio anta Lord apertura complanare**\_frassino tinto Roccia FT05, maniglia, profili esterni e inserti in metallo finitura Bronzo ME02. **Tavolino Cross Marmo**\_struttura in metallo finitura Bronzo ME02, piano marmo Emperador Dark. **Librerie pensili String**\_in metallo finitura Bronzo ME02.

*Wardrobe Lord coplanar door\_Roccia FT05 stained ash, Bronzo ME02 handle, profiles and metal insert, Cross Marmo small table\_Bronzo ME02 metal frame, Emperador Dark marble top, String wall bookshelves\_Bronzo ME02 metal frame.*





Wardrobe #28

**Armadio anta Lord apertura complanare\_cassettiera** in finitura Tecno Pelle. Vassoi estraibili con telaio verniciato Metal Grey ME03 e fondo in finitura Tecno Pelle. Accessori utili dall'aspetto molto elegante.

*Wardrobe Lord coplanar door\_chest of drawers in Tecno Pelle finish. Pull-out shelves with Metal Grey ME03 frame and Tecno Pelle finish bottom. Useful equipments with a very elegant appearance.*

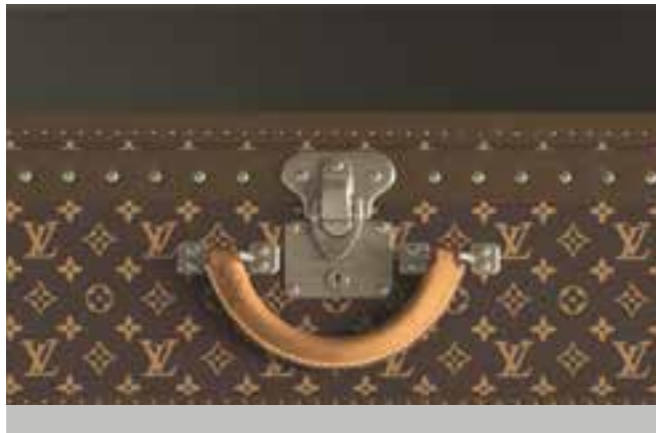


**CLAS S** *Metallo bronzo* accostato al *legno scuro: classe, raffinatezza e solidità*. Dettaglio delle librerie pensili String in metallo finitura Bronzo ME02, ripiani in finitura laccato opaco Fango OL06.

*Bronze metal is combined with dark wood: class, refinement and solidity. Detail of String wall bookshelves, Bronzo ME02 metal frame, Fango OL06 matte lacquer finish shelves.*







## SPAZIO GUARDAROBA

### *Walk-in closet*

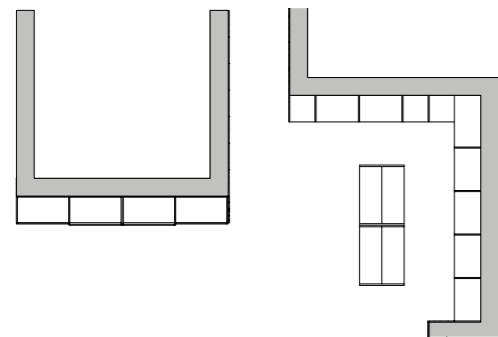
Uno spazio al servizio dei propri desideri, che risponde alle molteplici esigenze dettate dal *lifestyle contemporaneo*. Un *sistema su misura* dove *comfort, precisione e organizzazione* interpretano il vivere quotidiano. La *modularità senza limiti* e le *ricche proposte di attrezzatura interna* sono le carte vincenti di questo progetto.

*A space furnished according to one's desires, that answers to multiple needs deriving from a contemporary life style. A customizable system where comfort, precision and organisation interpret every day life. Modularity without limits and the rich proposals of internal equipment are the winning cards of this project.*



## Walk-inCloset#01

### CONTEMPORARY



#### First guardaroba - Velo scorrevole | First walk-in closet - Sliding Velo

##### ***In questa stanza guardaroba:***

cabina First, isole esterne First, boiserie Stripe, armadio Velo apertura scorrevole.

##### ***In the walk-in closet:***

First walk-in closet, First drawer-unit island, Stripe boiserie, wardrobe with Velo sliding door.





**Cabina First**\_in finitura Grey Wood, cassettiere in Grey Wood, ripiani in vetro Trasparente Fumè VT01 con telaio verniciato Metal Grey ME03 e luce led integrata. Vassoi estraibili con telaio verniciato Metal Grey ME03. **Isole First**\_in finitura Grey Wood con teca in vetro Trasparente Fumè VT01. **Stripe boiserie**\_frassino laccato poro aperto Fango PA06.

*First walk-in closet\_in Grey Wood finish, chest of drawers in Grey Wood finish, Transparent Fumè VT01 glass shelves with Metal Grey ME03 frame and integrated led light. Pull-out shelves\_with Metal Grey ME03 frame. First drawer-unit island\_in Grey Wood finish and Transparent Fumè VT01 glass case. Stripe boiserie\_PA06 open pore lacquered ash.*





Visione totale e trasparente  
degli oggetti del nostro  
desiderio.

*Complete and transparent view  
of the things we love.*

Armadio anta Velo apertura scorrevole\_  
telaio finitura Metal Grey ME03 e vetro  
Trasparente Fumè VT01.

*Wardrobe with Velo sliding door\_Metal Grey ME03  
frame and Transparent Fumè VT01 glass.*



box for objects

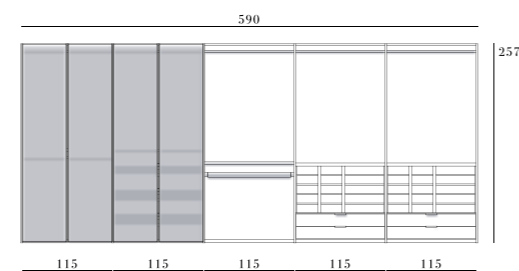
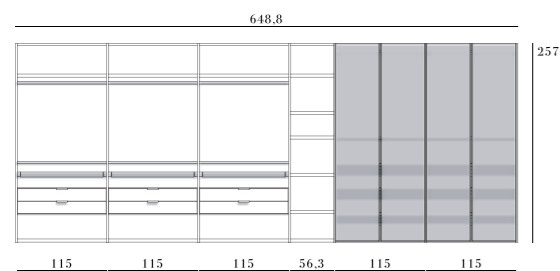
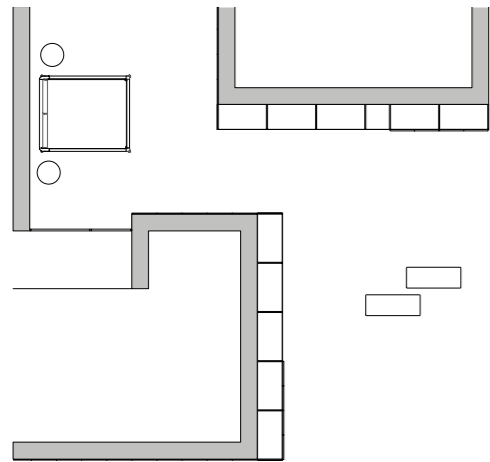
**Isole First**\_in finitura Grey Wood con teca in vetro Trasparente Fumè VT01. *Lineare pulizia estetica e funzionalità.* Nel particolare gli *eleganti accessori inseriti nel cassetto apribile della teca in vetro*: vaschette rettangolari *porta oggetti, porta gioielli e porta orologi*, con struttura rivestita in similpelle, esternamente grigio scuro e internamente grigio chiaro, fondo cassetto con tappetino in similpelle grigio scuro.

*First drawer-unit island*\_in Grey Wood finish and Transparent Fumè VT01 glass case. *Sleek, clean-lined aesthetics and functionality.* In particular, the *elegant accessories inserted into the opening drawer of the glass case*: boxes for objects and jewelry holder with structure covered in imitation leather, dark gray outside and light gray inside, drawer bottom with dark gray imitation leather.



## Walk-inCloset#02

### T I M E L E S S



**First guardaroba - Velo battente** | *First walk-in closet - hinged Velo*

**In questa stanza guardaroba:**  
cabine First, panchette Ruben, letto Lauren, tavolino Cross.

**In the walk-in closet:**  
*First walk-in closet, Ruben benches, Lauren bed, Cross small table.*





**Cabina First**\_in finitura Tecno Pelle, ante Velo apertura battente, telaio Metal Grey ME03 e vetro Trasparente Fumè VT01, schienali in Tecno Pelle laccato opaco Muschio OL08. **Cassettiere**\_in laccato opaco Muschio OL08, ripiani in vetro e vassoi estraibili con telaio verniciato Metal Grey ME03.

*First walk-in closet\_in Tecno Pelle finish, Velo hinghed door, Metal Grey ME03 frame and Transparent Fumè VT01 glass, back panels in Tecno Pelle matt lacquered Musk OL08. Chest of drawers\_in matt lacquered Musk OL08 finish and pull-out shelves in Metal Grey ME03.*





Walk-in closet #02

for Him, for Her

*La cabina per Lei e la cabina per Lui, entrambe riccamente accessoriate per soddisfare ogni esigenza nel riporre con ordine le proprie cose. Nel dettaglio il raster porta camicie e maglioni in finitura Tecno Pelle con eleganti scatole estraibili, esternamente in similpelle e internamente in velluto grigio scuro.*

*The walk-in closet for Her and the walk-in closet for Him, both richly equipped to meet every need in order to store your belongings. In detail, the raster carries shirts and sweaters in Tecno Pelle finish with elegant boxes in dark gray imitation leather outside and in dark gray velvet inside.*



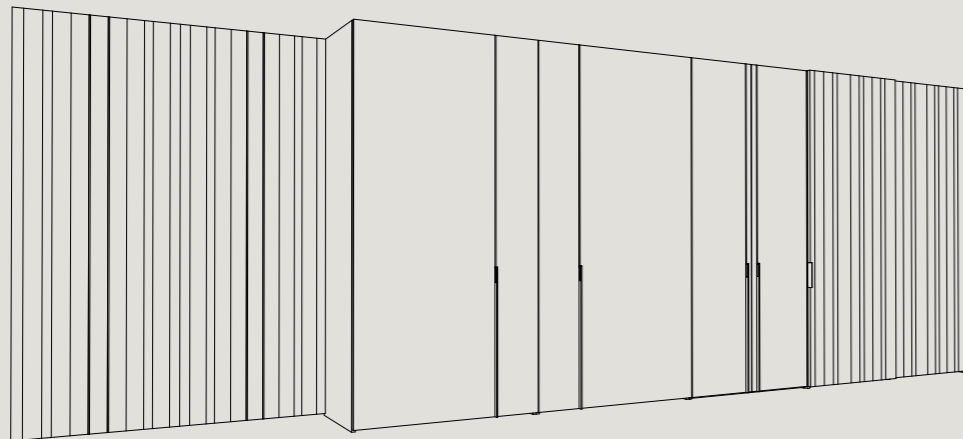
f i r s t  
wardrobes  
s y s t e m  
*technical*

— *indice sezione tecnica* | *technical section contents*



**Modularità evoluta / Evolute modularity p. 202**  
**Flexi / Flexi p. 203**  
**Ante / Doors p. 204**  
**Boiserie / Boiserie p. 210**  
**Maniglie / Handles p. 212**  
**Elementi battenti / Hinged door units p. 214**  
**Elementi speciali / Special units p. 215**  
**Elementi scorrevoli / Sliding door units p. 216**  
**Elementi complanari / Coplanar door units p. 217**  
**Organizzazione degli interni / Organizing the inside p. 218**  
**Illuminazione / Lighting p. 220**  
**Accessori interni / Equipment p. 221**  
**Cassettiere / Chest of drawers p. 222**  
**Tipologie di vassoi / Types of tray p. 223**  
**Ripiani dedicati / Special shelves p. 224**  
**Contenitori dedicati / Storage boxes p. 225**  
**Isola esterna / External island p. 226**  
**Finiture / Finishings p. 228**





## MODULARITÀ EVOLUTA | *EVOLUTE MODULARITY*

FIRST è un sistema armadi progettato con una modularità evoluta.

L'armadio può essere realizzato con ante di **diversa tipologia di apertura**, battente - scorrevole - coplanare, **perfettamente allineate** sia frontalmente che sotto e sopra, inoltre può combinarsi a pannelli di rivestimento murale **-boiserie-** con le stesse finiture e gli stessi elementi decorativi delle ante, creando soluzioni di grande impatto ove **l'armadio scompare alla vista** divenendo un tutt'uno con l'architettura della casa.

*FIRST is a wardrobes system with an advanced modularity, suitable to any space.*

*The wardrobe can be realized with different doors opening, hinged - sliding - coplanar, with perfect alignment on door panel. Wardrobe can be combined with mural panels -boiserie- with the same finishes and decorative elements of the doors. This solution permit to create great impact solutions where the wardrobe disappears into the view and becoming one with the architecture of the home.*



## FLEXI

Con i modelli contrassegnati dal timbro **FLEXI** non esistono più solo i moduli a misura fissa, l'armadio viene prodotto **al centimetro in altezza e in larghezza senza alcun aggravio di costi**. FLEXI permette di progettare in assoluta libertà, sfruttando tutto lo spazio disponibile e scegliendo sempre tra la **vasta gamma di essenze, finiture e colori** che contraddistingue tutta la produzione Ballancin.

**Modelli con apertura battente FLEXI:** Free, Jackie, Linea, Miller, Rod.

**Modelli con apertura scorrevole FLEXI:** Free, Jackie, Linea, Side.

*The models with the FLEXI stamp are no only fixed-size modules, they will have tailored in height and width without any cost increase. FLEXI allows you to design in absolute freedom, taking advantage of all available space and always choosing from the wide range of essences, finishes and colors of Ballancin production.*

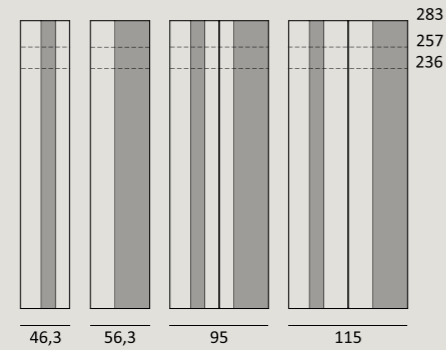
*FLEXI hinged opening doors: Free, Jackie, Linea, Miller, Rod.*

*FLEXI sliding opening doors: Free, Jackie, Linea, Side.*

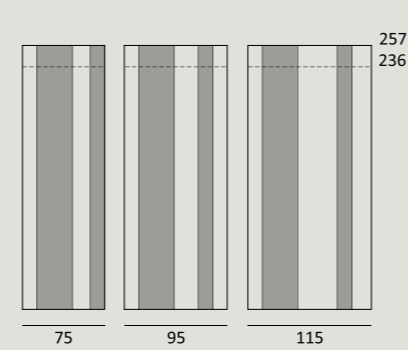
CITY



Moduli ANTA BATTENTE / *Hinged door units*



Moduli ANTA SCORREVOLE / *Sliding door units*

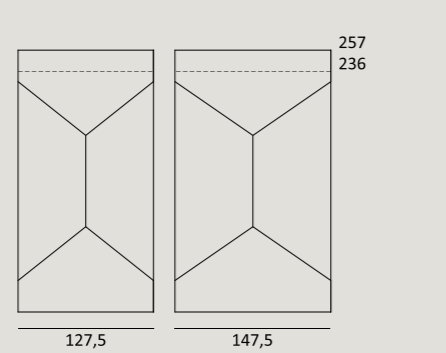


**Finiture anta:** frassino tinto / frassino laccato poro aperto / laccato opaco / vetro laccato / specchio  
**Door finishings:** stained ash / open pore lacquered ash / matte lacquered / lacquered glass / mirror  
**Maniglie disponibili / Handles available:** MN01 / MN10 / MN12 / MN31 / MN32 / MN 33 / MN34 / MN40 / MN09 / MN50 / MN51

EGO | design by Michele Marcon

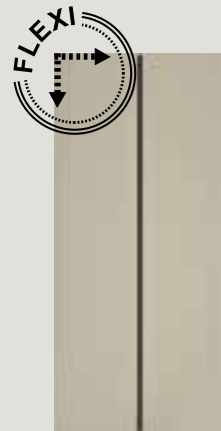


Moduli ANTA COMPLANARE / *Coplanar door units*

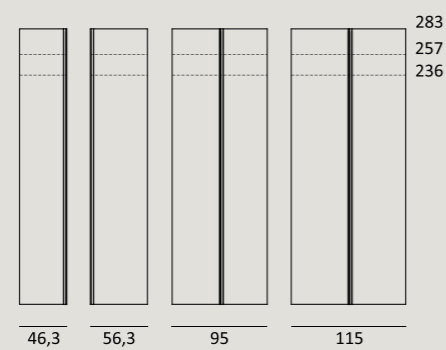


**Finiture anta:** laccato opaco / laccato lucido  
**Door finishings:** matte lacquered / glossy lacquered  
**Maniglie disponibili / Handles available:** MN30 / MN33

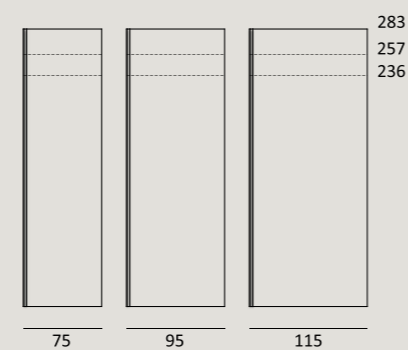
FREE



Moduli ANTA BATTENTE / *Hinged door units*



Moduli ANTA SCORREVOLE / *Sliding door units*

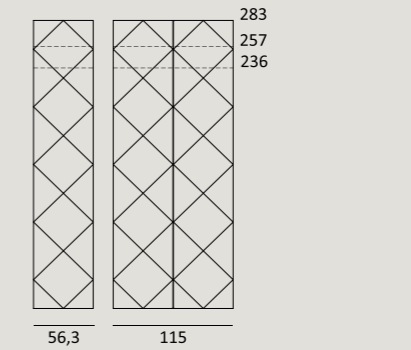


**Finiture anta:** frassino tinto / frassino laccato poro aperto / laccato opaco / laccato lucido  
**Door finishings:** stained ash / open pore lacquered ash / matte lacquered / glossy lacquered  
**Maniglia integrata / Built-in handle:** MN52

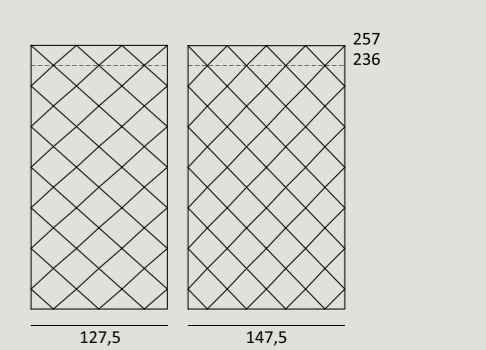
GEM | design by Michele Marcon | modello depositato / registered model



Moduli ANTA BATTENTE / *Hinged door units*



Moduli ANTA COMPLANARE / *Coplanar door units*

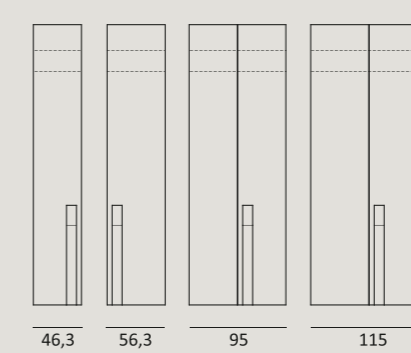


**Finiture anta:** laccato opaco / laccato lucido  
**Door finishings:** matte lacquered / glossy lacquered  
**Maniglie disponibili / Handles available:** MN30 / MN33

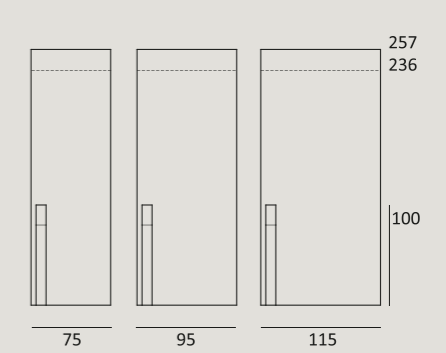
JACKIE | design by Michele Marcon



Moduli ANTA BATTENTE / *Hinged door units*

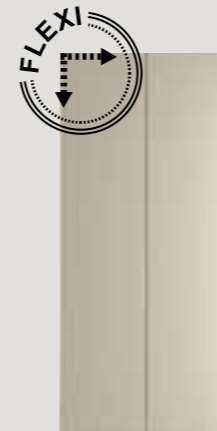


Moduli ANTA SCORREVOLE / *Sliding door units*

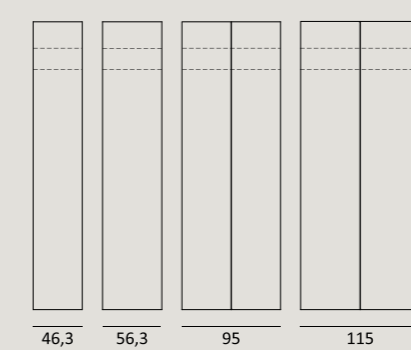


**Finiture anta:** laccato opaco / laccato lucido  
**Door finishings:** matte lacquered / glossy lacquered  
**Maniglia integrata, optional rivestimento in similpelle Vintage / Built-in handle, optional cover in Vintage imitation leather**

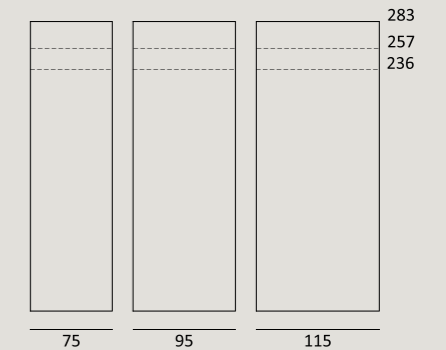
LINEA



Moduli ANTA BATTENTE / *Hinged door units*



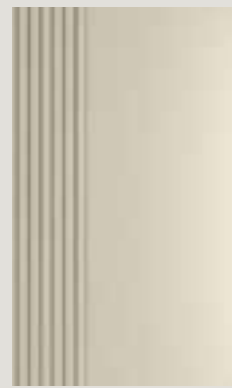
Moduli ANTA SCORREVOLE / *Sliding door units*



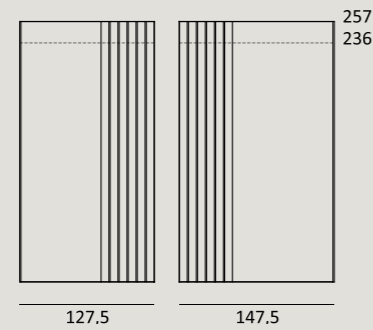
**Finiture anta:** frassino tinto / frassino laccato poro aperto / laccato opaco / laccato lucido  
**Door finishings:** stained ash / open pore lacquered ash / matte lacquered / glossy lacquered  
**Maniglie disponibili / Handles available:** M01 / MN10 / MN12 / MN13 / MN30 / MN31 / MN32 / MN 33 / MN 34 / MN40 / MN41 / MN42 / MN09 / MN50 / MN51



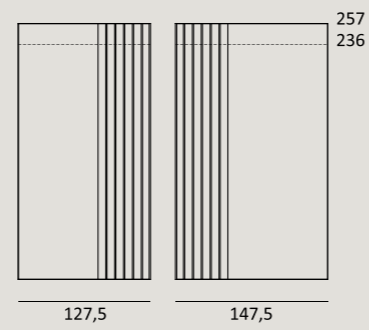
LORD | design by Michele Marcon



Moduli ANTA SCORREVOLE / *Sliding door units*



Moduli ANTA COMPLANARE / *Coplanar door units*

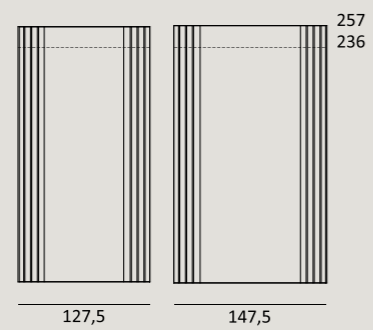


**Finiture anta:** frassino tinto / frassino laccato poro aperto / laccato opaco  
**Door finishings:** *stained ash / open pore lacquered ash / matte lacquered*  
**Maniglia integrata / Built-in handle:** MN51 solo finitura Bronzo / *MN51 only Bronzo finish*

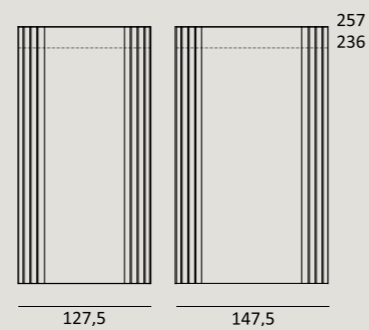
MADAME | design by Michele Marcon



Moduli ANTA SCORREVOLE / *Sliding door units*



Moduli ANTA COMPLANARE / *Coplanar door units*

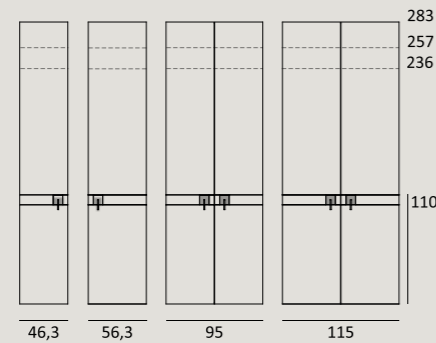


**Finiture anta:** frassino tinto / frassino laccato poro aperto / laccato opaco  
**Door finishings:** *stained ash / open pore lacquered ash / matte lacquered*  
**Maniglia integrata / Built-in handle:** MN51 solo finitura Bronzo / *MN51 only Bronzo finish*

MILLER | design by Michele Marcon



Moduli ANTA BATTENTE / *Hinged door units*

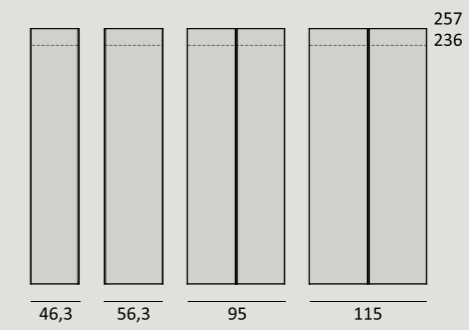


**Finiture anta:** frassino tinto / frassino laccato poro aperto / laccato opaco  
**Door finishings:** *stained ash / open pore lacquered ash / matte lacquered*  
**Maniglia integrata / Built-in handle:** MN42

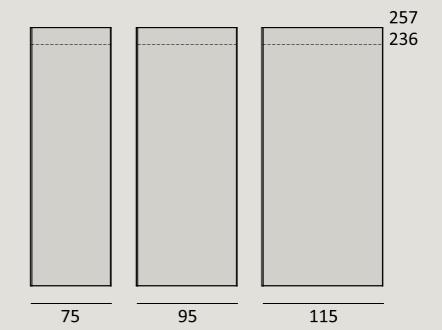
MIRAGE



Moduli ANTA BATTENTE / *Hinged door units*



Moduli ANTA SCORREVOLE / *Sliding door units*

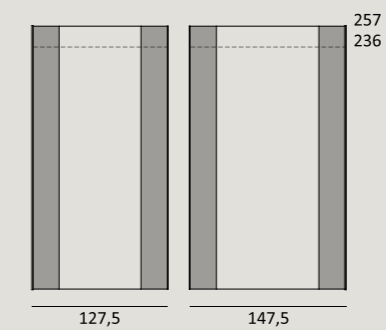


**Finiture anta:** vetro laccato / specchio  
**Door finishings:** *lacquered glass / mirror*  
**Maniglia integrata / Built-in handle:** MN51

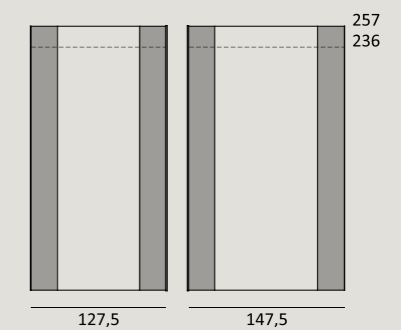
RAIL | design by Michele Marcon



Moduli ANTA SCORREVOLE / *Sliding door units*



Moduli ANTA COMPLANARE / *Coplanar door units*

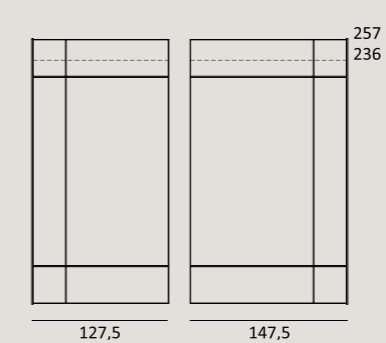


**Finiture anta:** frassino tinto / frassino laccato poro aperto / laccato opaco / similpelle Vintage  
**Door finishings:** *stained ash / open pore lacquered ash / matte lacquered / Vintage imitation leather*  
**Maniglia integrata / Built-in handle:** MN51 solo finitura Bronzo / *MN51 only Bronzo finish*

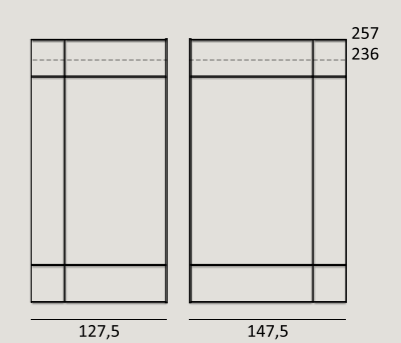
REVERSE | design by Michele Marcon



Moduli ANTA SCORREVOLE / *Sliding door units*

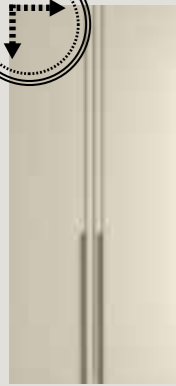


Moduli ANTA COMPLANARE / *Coplanar door units*

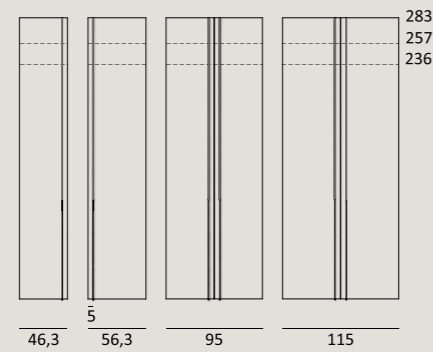


**Finiture anta:** frassino tinto / frassino laccato poro aperto / laccato opaco / laccato lucido  
**Door finishings:** *stained ash / open pore lacquered ash / matte lacquered / glossy lacquered*  
**Maniglia integrata / Built-in handle:** MN51 solo finitura Bronzo / *MN51 only Bronzo finish*

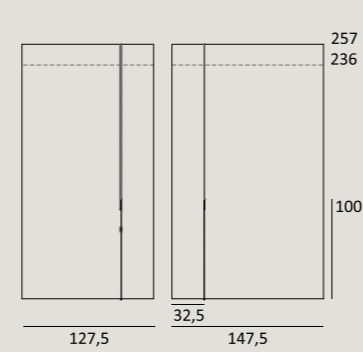
ROD | design by Michele Marcon



Moduli ANTA BATTENTE / *Hinged door units*



Moduli ANTA COMPLANARE / *Coplanar door units*

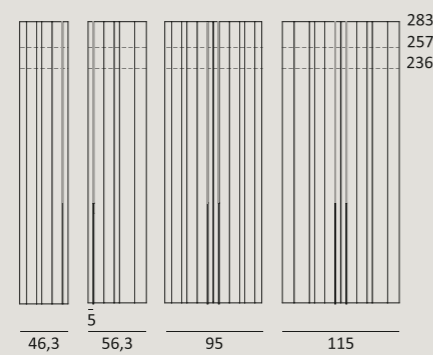


**Finiture anta:** frassino tinto / frassino laccato poro aperto / laccato opaco / laccato lucido  
**Door finishings:** *stained ash / open pore lacquered ash / matte lacquered / glossy lacquered*  
**Maniglia integrata / Built-in handle:** MN31

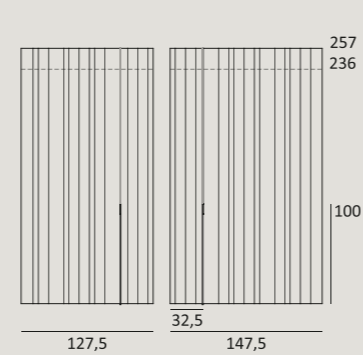
ROD PLUS | design by Michele Marcon



Moduli ANTA BATTENTE / *Hinged door units*



Moduli ANTA COMPLANARE / *Coplanar door units*

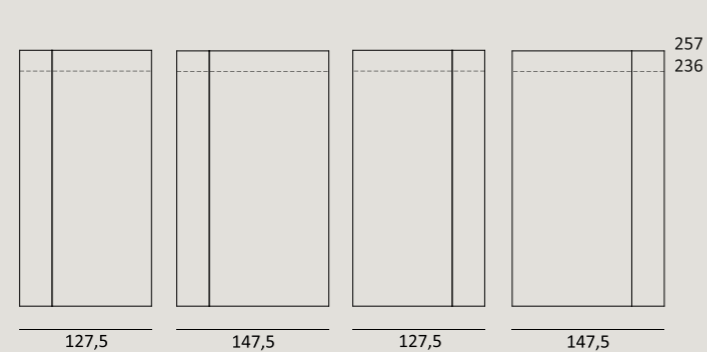


**Finiture anta:** frassino tinto / frassino laccato poro aperto / laccato opaco  
**Door finishings:** *stained ash / open pore lacquered ash / matte lacquered*  
**Maniglia integrata / Built-in handle:** MN31

SIDE



Moduli ANTA SCORREVOLE / *Sliding door units*

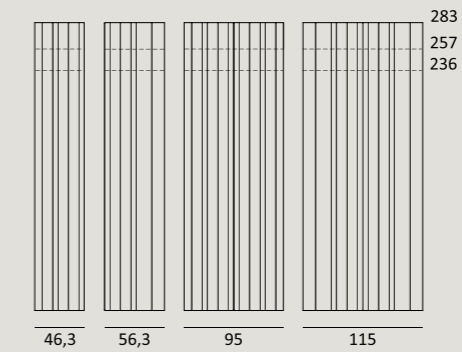


**Finiture anta:** frassino tinto / frassino laccato poro aperto / laccato opaco / laccato lucido / vetro laccato (solo pannello stretto) / specchio (solo pannello stretto)  
**Door finishings:** *stained ash / open pore lacquered ash / matte lacquered / glossy lacquered / lacquered glass (only narrow panel) / mirror (only narrow panel)*  
**Maniglie disponibili / Handles available:** MN09 / MN50

STRIPE



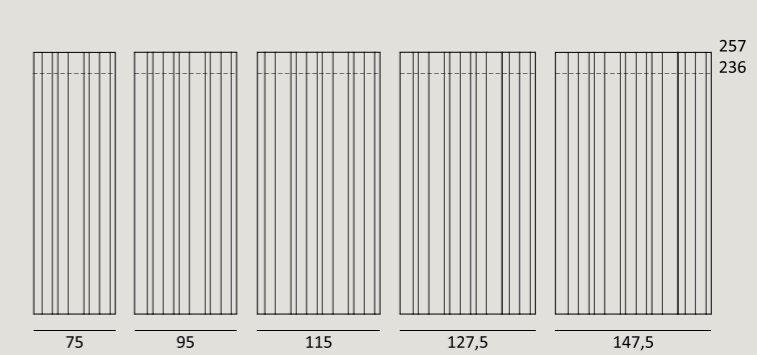
Moduli ANTA BATTENTE / *Hinged door units*



**Finiture anta:** frassino tinto / frassino laccato poro aperto / laccato opaco  
**Door finishings:** *stained ash / open pore lacquered ash / matte lacquered*  
**Maniglia integrata / Built-in handle:** MN50



Moduli ANTA SCORREVOLE / *Sliding door units*

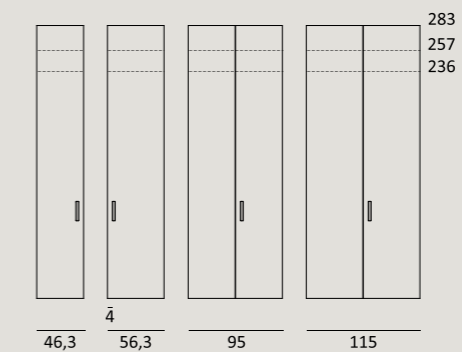


**Finiture anta:** frassino tinto / frassino laccato poro aperto / laccato opaco  
**Door finishings:** *stained ash / open pore lacquered ash / matte lacquered*  
**Maniglia integrata / Built-in handle:** MN09 / MN50

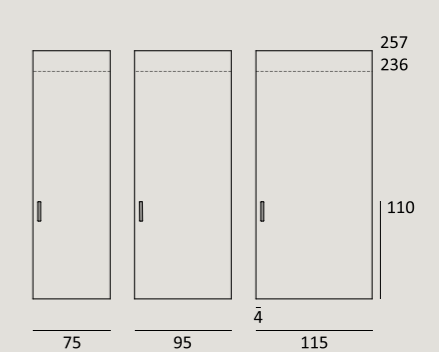
URBAN



Moduli ANTA BATTENTE / *Hinged door units*

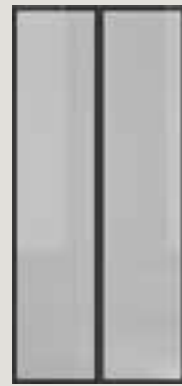


Moduli ANTA SCORREVOLE / *Sliding door units*

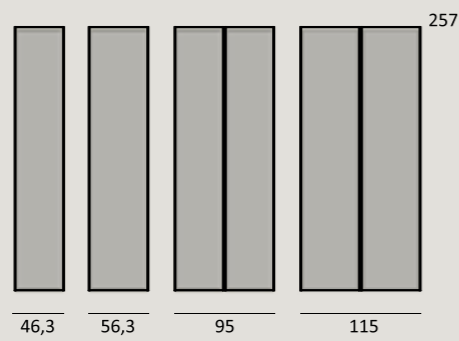


**Finiture anta:** frassino tinto / frassino laccato poro aperto / laccato opaco  
**Door finishings:** *stained ash / open pore lacquered ash / matte lacquered*  
**Maniglia integrata:** cover interna in vetro laccato / similpelle Vintage / **Built-in handle:** *internal cover in lacquered glass / Vintage imitation leather*

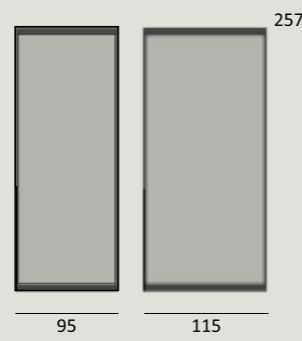
VELO



Moduli ANTA BATTENTE / *Hinged door units*



Moduli ANTASCORREVOLE / *Sliding door units*



**Finitura telaio anta:** epossidico Metal Grey / *Door frame finishing:* epoxy Metal Grey

**Finitura anta:** vetro Trasparente Fumè / vetro Riflettente Grigio / *Door finishings:* Transparent Fumè glass / Reflective Grigio glass

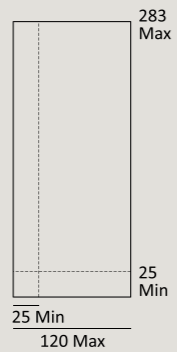
**Maniglia integrata / Built-in handle**

BOISERIE | Boiserie

LINEA



BOISEIRE / *Boiserie*



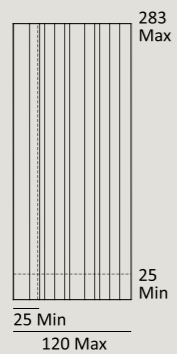
**Finiture:** frassino tinto / frassino laccato poro aperto / laccato opaco

**Finishing:** stained ash / open pore lacquered ash / matte lacquered

STRIPE



BOISEIRE / *Boiserie*



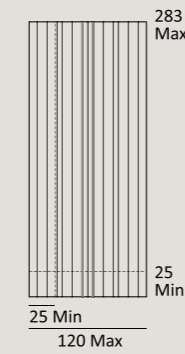
**Finiture:** frassino tinto / frassino laccato poro aperto / laccato opaco

**Finishing:** stained ash / open pore lacquered ash / matte lacquered

STRIPE ROD



BOISEIRE / *Boiserie*

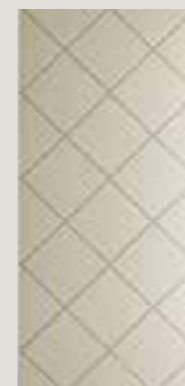


**Finiture:** frassino tinto / frassino laccato poro aperto / laccato opaco

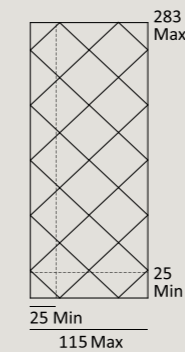
**Finishing:** stained ash / open pore lacquered ash / matte lacquered

**Profilo ROD:** Bronzo / laccato opaco / **Profile ROD:** Bronzo / matte lacquered

GEM | design by Michele Marcon | modello depositato / registered model



BOISEIRE / *Boiserie n.1*



**Finiture:** laccato opaco / laccato lucido

**Finishing:** matte lacquered / glossy lacquered

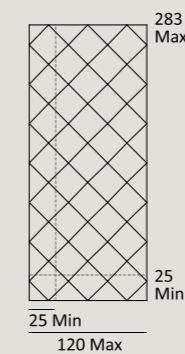
I Rombi non corrispondono alle misure minime del pannello

*The rhombus don't correspond to the minimum measures of the panel*

GEM | design by Michele Marcon | modello depositato / registered model



BOISEIRE / *Boiserie n.2*



**Finiture:** laccato opaco / laccato lucido

**Finishing:** matte lacquered / glossy lacquered

I Rombi non corrispondono alle misure minime del pannello

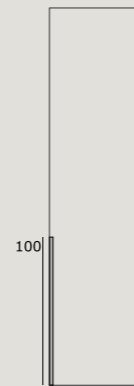
*The rhombus don't correspond to the minimum measures of the panel*





**MN01**

**Finitura:**  
legno laccato opaco  
**Finishing:**  
*matte lacquered wood*  
**Dimensioni / Dimensions:**  
l. 1,5 p. 2 h. 30



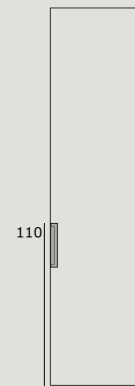
**MN10**

**Finitura:**  
frassino laccato poro aperto  
/ rovere naturale  
**Finishing:**  
*open pore lacquered ash,  
/ natural oak*  
**Dimensioni / Dimensions:**  
l. 2 p. 2,3 h. 100



**MN34**

**Finitura:**  
Peltro  
**Finishing:**  
*Peltro*  
**Dimensioni / Dimensions:**  
l. 3 p. 2,8 h. 35



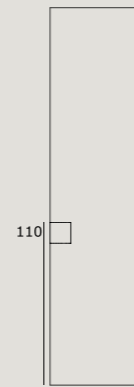
**MN40**

**Finitura:**  
Metal Iron  
**Finishing:**  
*Metal Iron*  
**Dimensioni / Dimensions:**  
l. 5 p. 3 h. 30



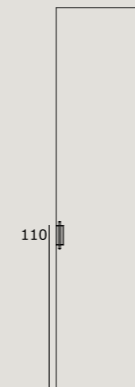
**MN12**

**Finitura:**  
legno laccato opaco  
**Finishing:**  
*matte lacquered wood*  
**Dimensioni / Dimensions:**  
l. 14 p. 2 h. 1,5



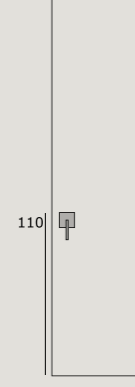
**MN13 Fly**

**Finitura:**  
frassino laccato a poro aperto  
**Finishing:**  
*open pore lacquered ash*  
**Dimensioni / Dimensions:**  
l. 15 p. 3 h. 14



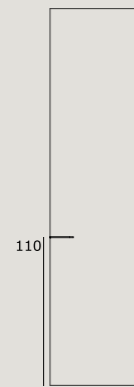
**MN41**

**Finitura:**  
Metal Brown / laccato opaco  
/ Bronzo (solo astina)  
**Bowl finishing:**  
*Metal Brown / matte lacquered  
/ Bronzo (only stich)*  
**Dimensioni / Dimensions:**  
l. 5 p. 3 h. 18



**MN42 Miller**

**Finitura:**  
Metal Brown / laccato opaco  
/ Bronzo (solo astina)  
**Bowl finishing:**  
*Metal Brown / matte lacquered  
/ Bronzo (only stich)*  
**Dimensioni / Dimensions:**  
l. 10 p. 3 h. 18



**MN30**

**Finitura:**  
Metal Brown  
**Finishing:**  
*Metal Brown*  
**Dimensioni / Dimensions:**  
l. 0,8 p. 2,5 h. 15,5



**MN31**

**Finitura:**  
Bronzo / laccato opaco  
**Finishing:**  
*Bronzo / matte lacquered*  
**Dimensioni / Dimensions:**  
l. 0,8 p. 2,5 h. 100



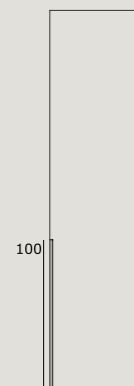
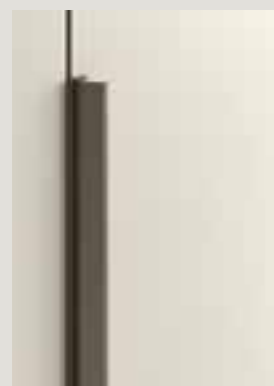
**MN09**

**Finitura:**  
Nero Opaco / Cromo Matt  
**Finishing:**  
*Nero Opaco / Cromo Matt*  
**Dimensioni / Dimensions:**  
l. 1,5 h. 11



**MN50**

**Finitura:**  
Cromo Matt / laccato opaco  
**Finishing:**  
*Cromo Matt / matte lacquered*  
**Dimensioni / Dimensions:**  
l. 0,4 p. 4,1 h. 20



**MN32**

**Finitura:**  
Metal Brown / laccato opaco  
**Finishing:**  
*Metal Brown / matte lacquered*  
**Dimensioni / Dimensions:**  
l. 1 p. 3 h. 100



**MN33 Ruben**

**Finitura:**  
Nero Opaco / Bronzo  
**Finishing:**  
*Nero Opaco / Bronzo*  
**Dimensioni / Dimensions:**  
l. 1 p. 2 h. 23



**MN51**

**Finitura:**  
Bronzo / laccato opaco  
**Finishing:**  
*Bronzo / matte lacquered*  
**Dimensioni / Dimensions:**  
l. 1 p. 4,2 h. anta / door

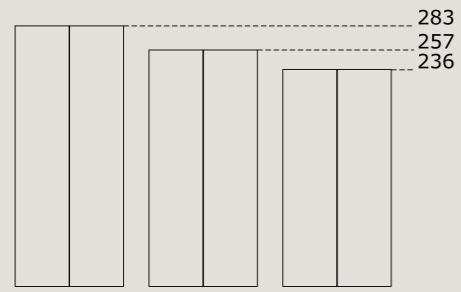


**MN52 Free**

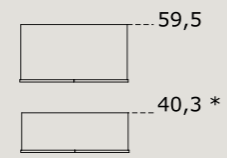
**Finitura:**  
Laccato opaco  
**Finishing:**  
*Matte lacquered*  
**Dimensioni / Dimensions:**  
l. 3,5 p. 2,2 h. anta / door

# ELEMENTI BATTENTI | Hinged door units

Altezza | Height

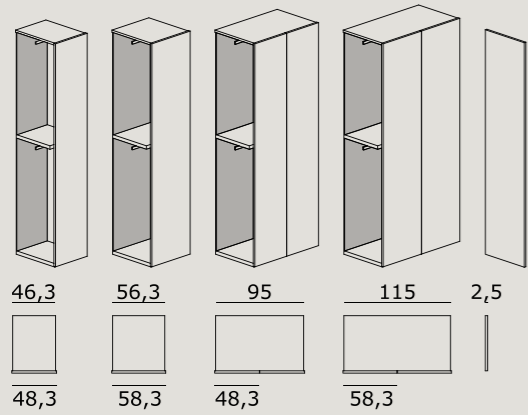


Profondità | Depth

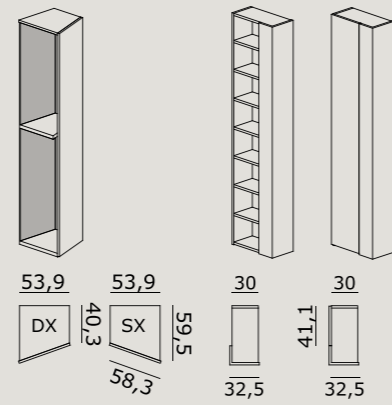


\* esclusi moduli con cassetti, terminale e angolo spogliatoio | excluding unit with drawers, end unit and corner walk-in closet

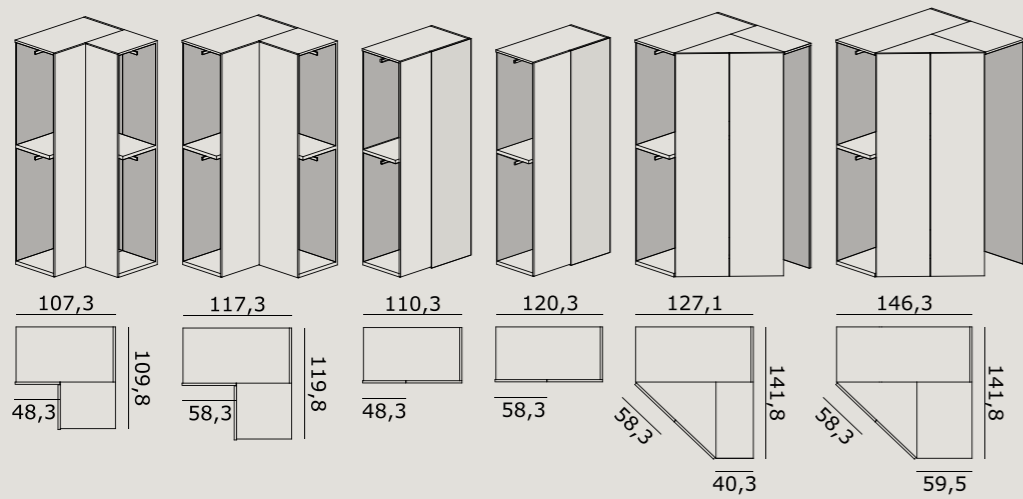
Elementi | Units



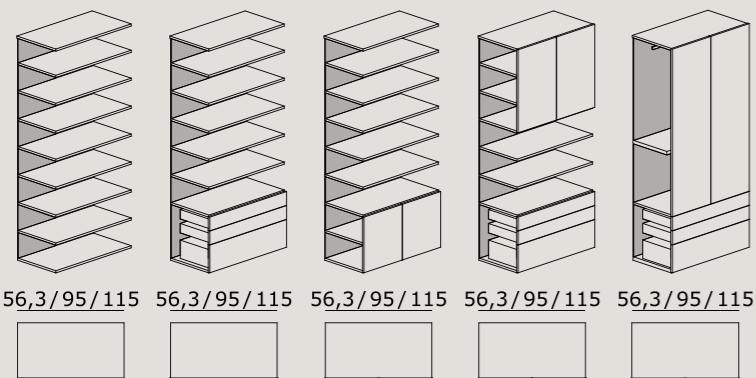
Terminali | End Units



Elementi angolo | Corner units

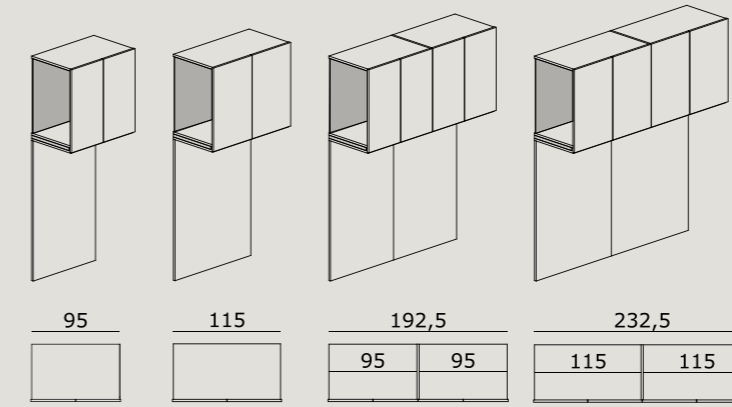


Elementi vani a giorno componibile | Open compartment units

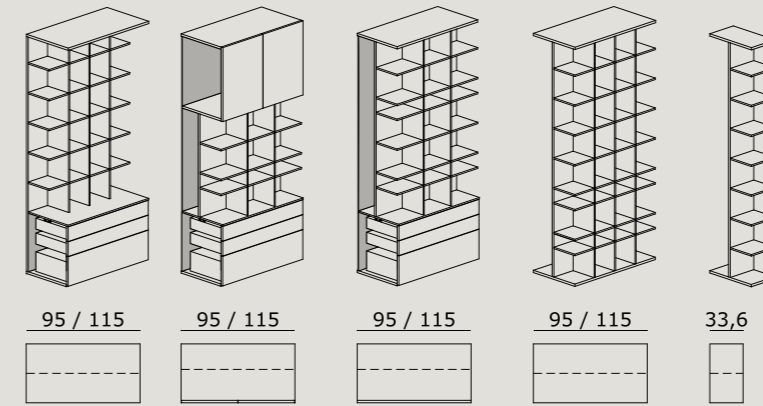


# ELEMENTI SPECIALI | Special units

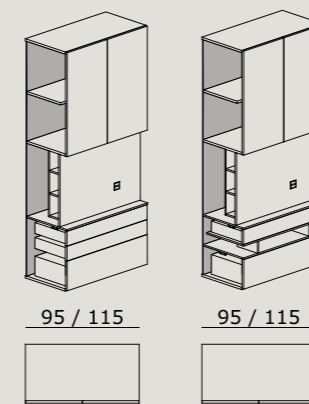
Ponti | Bridge units



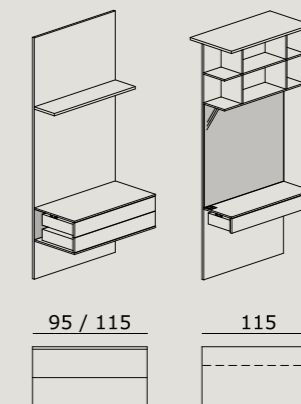
Elementi libreria | Bookshelf units



Elementi TV | TV units



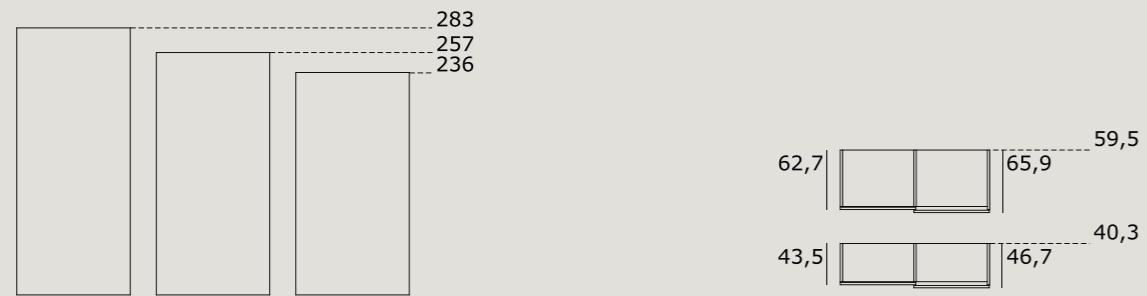
Elementi speciali | Special units



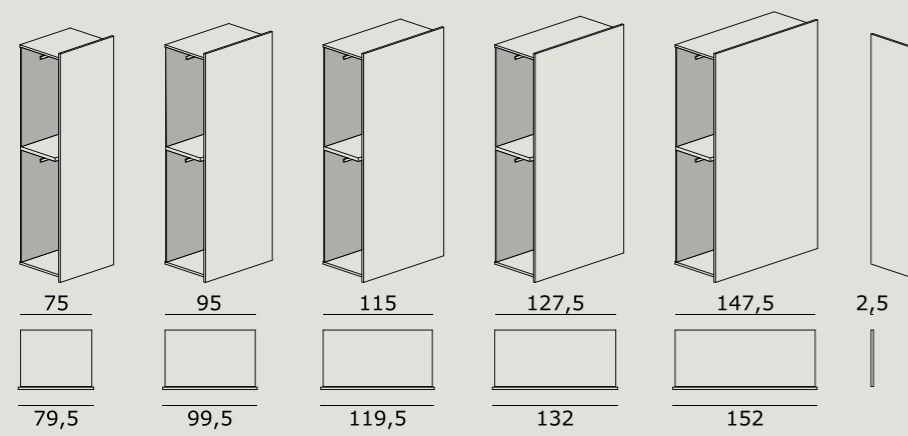
## ELEMENTI SCORREVOLI | Sliding door units

Altezza | Height

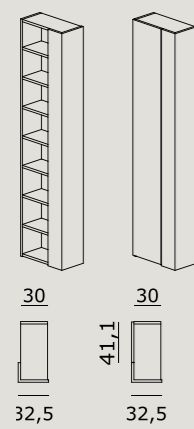
Profondità | Depth



Elementi | Units



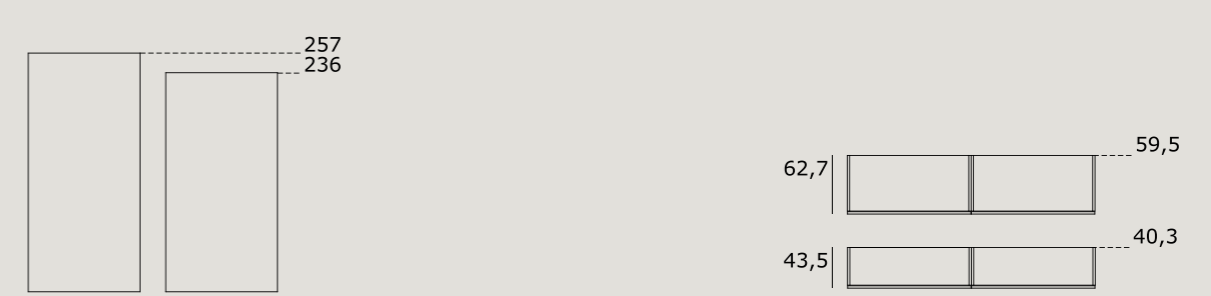
Terminali | End Units



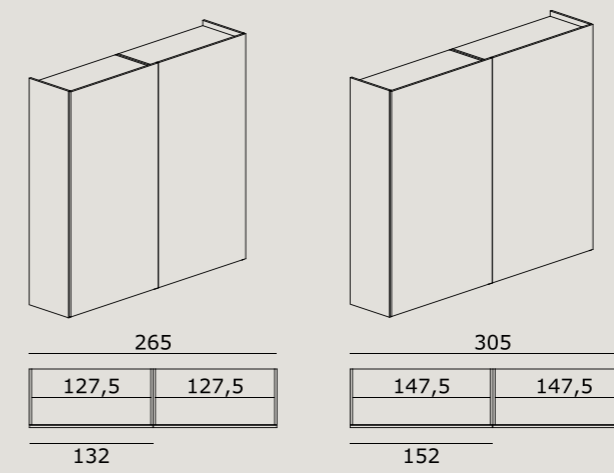
## ELEMENTI COMPLANARI | Coplanar door units

Altezza | Height

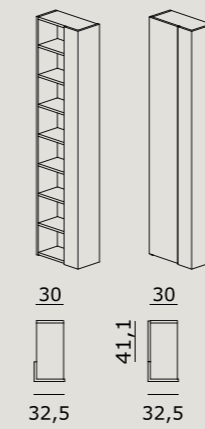
Profondità | Depth



Elementi | Units

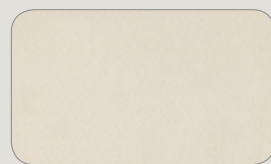


Terminali | End Units





Finiture disponibili | Available finishings



Tecno Pelle



Grey Wood



1

2

3

4

5

6

7

8

9

10

1	ELEMENTO L. 46,3  2 ripiani legno 1 tubo appendiabiti 1 specchio estraibile ed orientabile  <i>UNIT</i> W. 46,3  2 wood shelves 1 clothes rail 1 adjustable pull-out mirror	2	ELEMENTO L. 56,3  1 tubo appendiabiti 1 ripiano legno 2 ripiani porta scarpe inclinati  <i>UNIT</i> W. 56,3  1 clothes rail 1 wood shelf 2 inclined shoe rack shelves	3	ELEMENTO L. 56,3  1 ripiano legno 1 tubo appendiabiti 1 ripiano legno 2 vassoi estraibili 1 cassetiera interna tre cassetti legno  <i>UNIT</i> W. 56,3  1 wood shelf 1 clothes rail 1 wood shelf 2 pull-out trays 1 drawer-unit with three wood drawers	4	ELEMENTO L. 56,3  1 tubo appendiabiti 1 ripiani legno con portagruccie estraibile 2 ripiani legno  <i>UNIT</i> W. 56,3  1 clothes rail 1 wood shelf with pull-out rod 2 wood shelves	5	ELEMENTO L. 75  3 ripiani legno 1 cassetiera interna sei cassetti legno  <i>UNIT</i> W. 75  3 wood shelves 1 drawer-unit with six wood drawers	6	ELEMENTO L. 95  1 servetto 2 vassoi estraibili 1 porta pantaloni estraibile  <i>UNIT</i> W. 95  1 servetto - clothes lift 2 pull-out trays 1 pull-out trouser rack	7	ELEMENTO L. 95  1 tubo appendiabiti 1 cassetiera sospesa con un cassetto in legno 1 vassoio estraibile con sacche porta biancheria  <i>UNIT</i> W. 95  1 clothes rail 1 floating drawer-unit with large wood drawer 1 pull-out tray with linen laundry bag	8	ELEMENTO L. 115  1 tubo appendiabiti 1 raster porta camicie e maglioni 1 cassetiera sospesa con due cassetti in legno 1 vassoio estraibile con porta scarpe  <i>UNIT</i> W. 115  1 clothes rail 1 cubby-hole unit for shirts and jumpers 1 floating drawer-unit with two wood drawers 1 pull-out tray with shoe rack	9	ELEMENTO L. 127,5  1 tubo appendiabiti 1 ripiano legno 1 divisorio 3 ripiani legno 1 tubo appendiabiti  <i>UNIT</i> W. 127,5  1 clothes rail 1 wood shelf 1 partition 3 wood shelves 1 clothes rail	10	ELEMENTO L. 147,5  1 ripiano legno 1 tubo appendiabiti 1 cassetiera con 1 ripiano laterale con due cassetti in vetro e due cassetti legno  <i>UNIT</i> W. 147,5  1 wood shelf 1 clothes rail 1 drawer-unit with side shelf, two glass front drawers and two wood drawers
---	---	---	---	---	--	---	--	---	---	---	--	---	--	---	--	---	---	----	--

Ripiano in vetro con luce LED | *Glass shelf with LED light*



Ripiano vetro Trasparente Fumè VT01 con telaio in alluminio finitura Metal Grey ME03 e luce LED integrata.  
*Transparent Fumè VT01 glass shelf with aluminum frame in Metal Grey ME03 finish and integrated LED light.*

Ripiano legno con luce LED | *Wood shelf with LED light*



Barra luce LED incassata per ripiano legno o top.  
*Built-in LED strip for wood shelf or top panel.*

Fianco con luce LED | *Side panel with LED light*



Barra luce LED incassata per fianco o divisorio.  
Sensore di prossimità ad infrarossi incassato nello spessore del cappello, controlla l'accensione di tutte le luci inserite nel vano.  
*Built-in LED strip for side panel or partition. Infrared proximity sensor fit in in the thickness of top panel, controls the starting of all the lights inserted in the unit.*

Tubo appendiabito | *Clothes rail*



Tubo appendiabito in finitura Metal Grey ME03 con guarnizione trasparente | *Clothes rail in finish Metal Grey ME03 with transparent seal.*

Servetto | *Servetto - clothes lift*



Servetto oleodinamico finitura Brown | *Servetto - clothes lift, Brown finish.*

Specchio orientabile ed estraibile

*Adjustable pull-out mirror*



Specchio orientabile - estraibile da applicare all'interno di un elemento scorrevole, telaio in finitura Metal Grey ME03.  
*Adjustable pull-out mirror to be fix to sliding door unit, frame in finish Metal Grey ME03.*

Cassettiera interna con cassetti in vetro | *Drawer-unit with glass front drawers*



Cassettiera interna con cassetti in vetro.  
*Drawer-unit with glass front drawers.*

Cassettiera interna con cassetti legno | *Drawer-unit with wood front drawers*



Cassettiera interna con cassetti legno. Maniglie in finitura Metal Grey ME03.  
*Drawer-unit with wood front drawers. Handles in finish Metal Grey ME03.*

Vassoio estraibile | *Pull-out tray*



Vassoio estraibile con telaio in alluminio in finitura Metal Grey ME03. Piano in finitura Techno Pelle o Grey Wood.  
*Pull-out tray with an aluminum frame in finish Metal Grey ME03. Panel in finish Techno Pelle or Grey Wood.*

Vassoio estraibile con griglia | *Pull-out tray with inner partition*



Vassoio estraibile con telaio in alluminio in finitura Metal Grey ME03. Piano in finitura Techno Pelle o Grey Wood e dotato di griglia laccata opaco.  
*Pull-out tray with an aluminum frame in finish Metal Grey ME03. Panel in finish Techno Pelle or Grey Wood and equipped with inner partition finish matte lacquer.*

Porta pantaloni estraibile | *Pull-out trouser rack*



Porta pantaloni estraibile con telaio in alluminio in finitura Metal Grey ME03.  
*Pull-out trouser rack with an aluminum frame in finish Metal Grey ME03.*

Vassoio estraibile porta scarpe | *Pull-out tray with shoe rack*



Vassoio estraibile con telaio in alluminio e con elemento porta scarpe inclinato in finitura Metal Grey ME03.  
*Pull-out tray with an aluminum frame and inclined shoe rack in finish Metal Grey ME03.*



Ripiano inclinato porta scarpe | *Inclined shoe rack shelf*



Ripiano inclinato porta scarpe con due profili batti tacco in finitura Metal Grey ME03.  
*Inclined shoe rack shelf with dividers in finish Metal Grey ME03.*

Raster | *Cubby-hole unit*



Raster porta camicie e maglioni in finitura Tecno Pelle o Grey Wood. Disponibile come optional scatola (L. 26 P. 40 H. 80) con struttura rivestita in similpelle esterna grigio scuro e internamente in velluto grigio scuro.  
*Cubby-hole unit for shirt and jumper in finish Tecno Pelle or Grey Wood. Available as an optional boxes (W. 26 D. 40 H. 80) with structure covered in imitation leather dark gray outside and in velvet dark gray inside.*

Vaschetta portaoggetti per vassoio estraibile | *Storage box for pull-out tray*



Vaschette porta oggetti e porta gioielli con struttura rivestita in similpelle, esternamente grigio scuro e internamente grigio chiaro. Si può utilizzare all'interno del vassoio estraibile. L. 36,5 P. 39,5 H. 5  
*Boxes for objects and jewelry holder with structure covered in imitation leather, dark gray outside and light gray inside. It can be used inside pull-out tray. W. 36,5 D. 39,5 H. 5*

Vaschette portaoggetti per cassetto | *Storage boxes for drawers*



Vaschette porta oggetti con struttura rivestita in similpelle, esternamente grigio scuro e internamente grigio chiaro. Disponibile in tre tipologie: per orologi, per anelli e per oggetti vari. Si possono utilizzare all'interno dei cassetti. L. 15 P. 43,2 H. 5  
*Boxes for objects with structure covered in imitation leather, dark gray outside and light gray inside. Available in three types: for watches, rings and various objects. They can be used inside the drawers. W. 15 D. 43,2 H. 5*

Tappetino per fondo cassetto | *Mat for drawer bottom*



Tappetino in similpelle grigio scuro per fondo cassetti.  
*Mat in dark gray imitation leather for drawer bottom.*

Scatola | *Box*

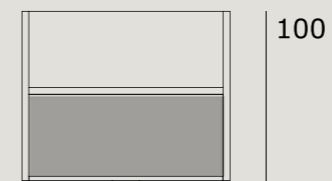
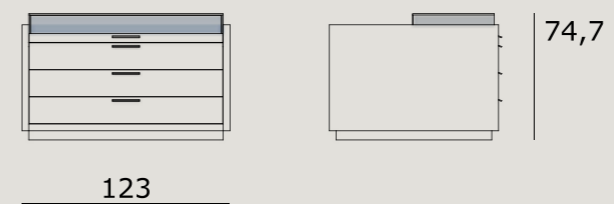
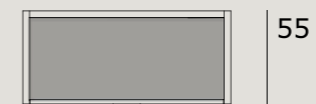
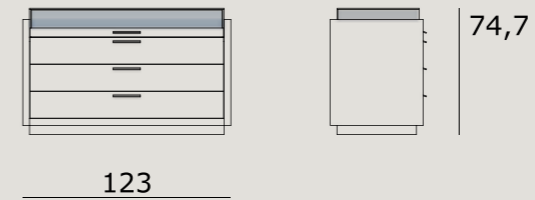


Scatola con coperchio con struttura rivestita esternamente in similpelle grigio scuro e internamente in velluto grigio scuro. L. 35 P. 45 H. 20  
*Box with lid and structure covered in dark gray imitation leather and in dark gray velvet inside. W. 35 D. 45 H. 20*

Isola con cassetti esterna | External drawers-unit island



Misure disponibili | Available sizes



Finiture disponibili | Available finishings

**Cassettiera isola First disponibile in due finiture:** Grey Wood e Tecno Pelle. Formata da: un vassoio estraibile con frontale vetro trasparente Fumè h. 16,2 cm., tre cassetti con frontale legno h. 16 cm., teca fissa in vetro trasparente Fumè, retro a giorno con ripiani nella versione profondità 100 cm. Maniglie in finitura Metal Grey ME03. **Optional per vassoio estraibile:** griglia in laccato opaco, vaschette porta oggetti con struttura rivestita in similpelle tipologie per orologi, per anelli e per oggetti vari, piano con tappetino in similpelle grigio scuro.

*First island chest of drawers available in two finishes: Gray Wood and Tecno Pelle. It is composed of: one shallow tray with transparent Fumè glass front H 16,2, three deep drawers with wooden front h. 16 cm., fixed case in transparent Fumè glass, open back with shelves in the 100 cm depth version. Handles in Metal Gray ME03 finish. Optional on shallow tray: inner partition in matte lacquer finish, boxes for objects with structure covered in imitation leather, types for watches, rings and various objects, Mat in imitation leather for drawer bottom.*

Frassino Tinto | Stained Ash



Sabbia FT01



Argilla FT02



Terra FT03



Creta FT04



Roccia FT05



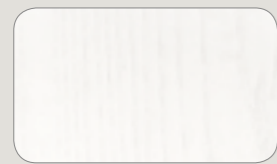
Carbone FT06

Rovere Naturale | Natural Oak

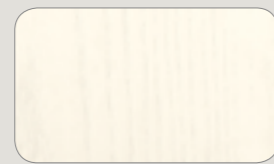


Rovere Naturale RN01

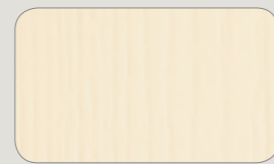
Frassino laccato poro aperto | Open pore lacquered ash



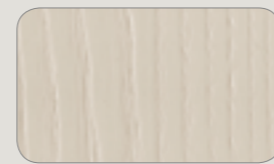
Bianco Puro PA01



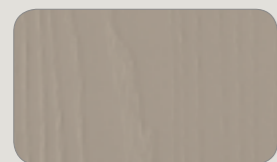
Bianco Caldo PA02



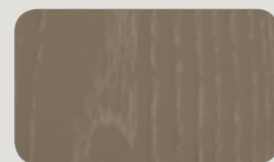
Crema PA03



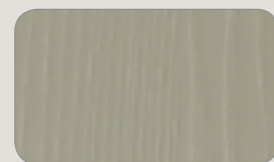
Canapa PA04



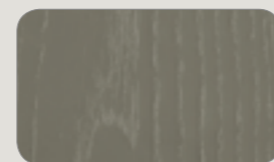
Visone PA05



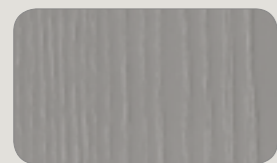
Fango PA06



Salvia PA07



Muschio PA08

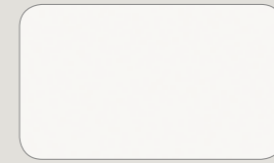


Ferro PA09



Grafite PA10

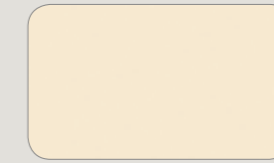
Laccato Opaco | Matte Lacquered



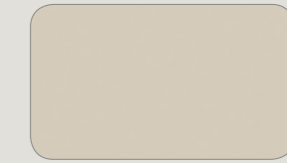
Bianco Puro OL01



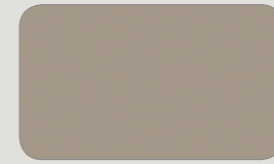
Bianco Caldo OL02



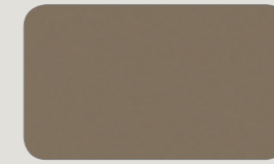
Crema OL03



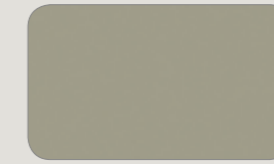
Canapa OL04



Visone OL05



Fango OL06



Salvia OL07



Muschio OL08

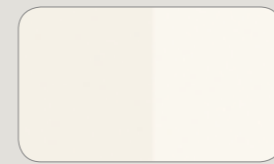


Ferro OL09

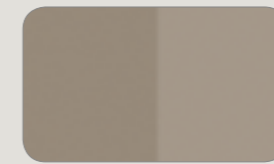


Grafite OL10

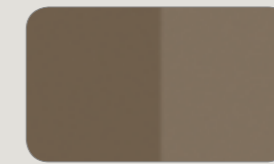
Laccato Lucido | Glossy Lacquered



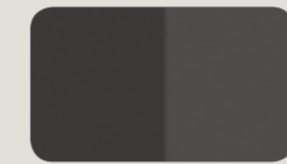
Bianco LL11



Visone LL12



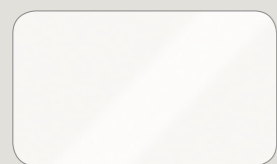
Fango LL13



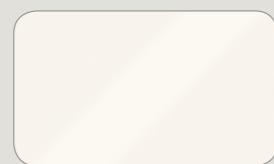
Grafite LL14



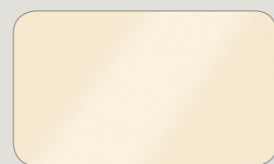
Vetro Laccato | Lacquered Glass



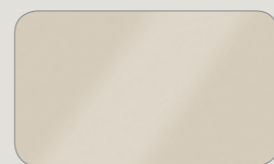
Bianco Puro VL01



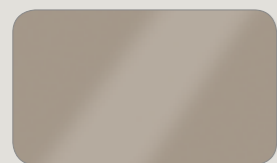
Bianco Caldo VL02



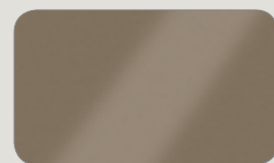
Crema VL03



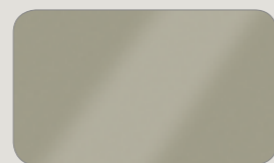
Canapa VL04



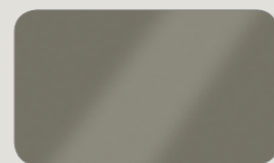
Visone VL05



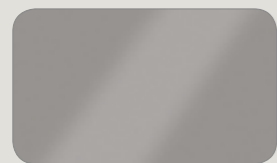
Fango VL06



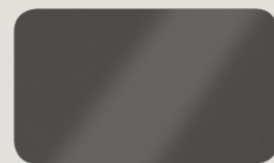
Salvia VL07



Muschio VL08

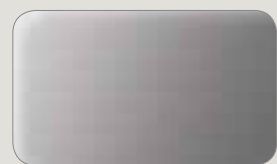


Ferro VL09

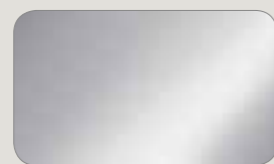


Grafite VL10

Vetro Temperato | Tempered Glass

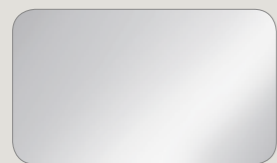


Trasparente Fumè VT01



Riflettente Grigio VT02

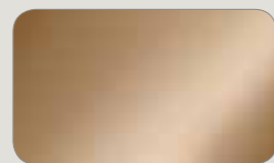
SPECCHI | Mirrors



Naturale SP01

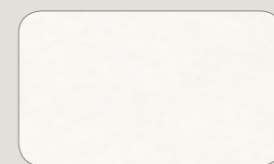


Fumè SP02

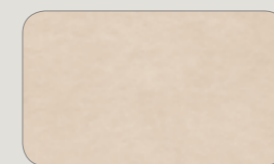


Bronzo SP03

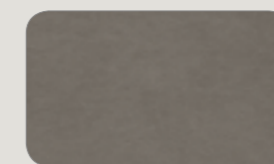
Similpelle Vintage | Vintage Imitation Leather



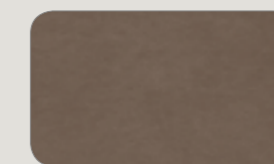
Bianco E101



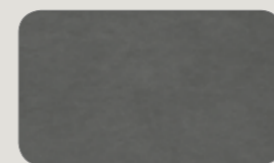
Beige E4EZ



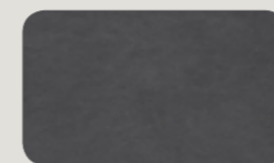
Tortora E4G9



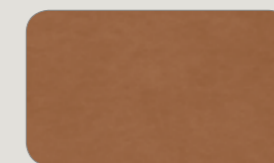
Camoscio E5EL



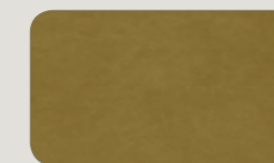
Elefante E2DH



Piombo E2E3

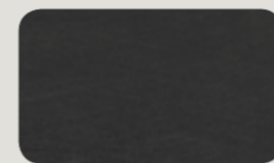


Mattone E5B1

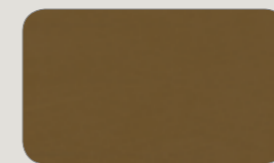


Pistacchio E7DM

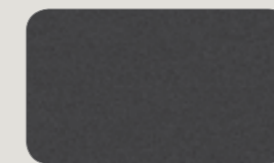
METALLI | Metals



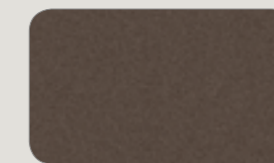
Nero Opaco ME01



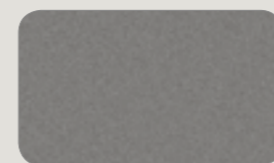
Bronzo ME02



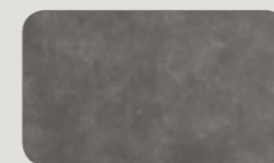
Metal Grey ME03



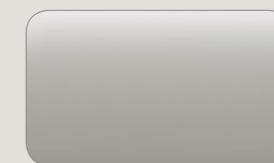
Metal Brown ME04



Metal Iron ME05



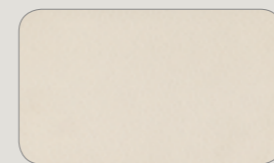
Peltro Sfumato ME06



Cromo Matt ME07

INTERNO ARMADI | Inside wardrobes

Decorativo Melaminico | Decorative Melanine



Tecno Pelle



Grey Wood

## Credits

design **Michele Marcon**

concept e styling **02 Studio**

images **Neiko**

photo **Studio Rocci**

graphic design **Atelier n.33**

photolithography **Lucegroup**

printed by **Lucegroup**

2018

 **Ballancin**

---

Ballancin si riserva il diritto di apportare, senza preavviso, ogni modifica mirata al miglioramento funzionale e qualitativo dei propri prodotti. Testi e disegni presenti in questo stampato hanno scopo divulgativo: per ogni aspetto tecnico e dimensionale fare riferimento ai listini aziendali e relativi aggiornamenti. Le tonalità delle riproduzioni fotografiche sono puramente indicative, per un'esatta scelta si deve fare riferimento al campionario colori.

*Ballancin reserves the rights at all time to apply modifications for the functional or qualitative improvement of its products. Texts and drawings present in this brochure have a divulgative purpose: for every technical and dimensional aspect please refer to the company's price lists and their relative updatings. The colour shades in the pictures are merely indicative. For a precise choice in is necessary to refer to the colour samples.*



---

MOBILIFICIO BALLANCIN srl

Via Monte Grappa, 18 | 31010 Farra di Soligo - Treviso

Tel: +39 0438 841562 | Fax: +39 0438 842653

[info@ballancin.it](mailto:info@ballancin.it) | [www.ballancin.it](http://www.ballancin.it)