

Collection II/19

Frag
dal 1921



p. 004

Abacus

p. 006

Chapter I
Also Textiles

p. 056

Chapter III
Materials
Directory

p. 012

Chapter II
The Collection II

- 014 Olimpia
- 018 Artù
- 024 Square
- 026 Winnie
- 032 Cocoon
- 036 Elf
- 042 Viae
- 044 Riviera
- 048 Clubby
- 054 Doa

p. 074

Chapter IV
Technical
Sheet

Side Chairs >



Doa
FG 464.01
Shooting p. 54 - 55
Details p. 76



Elf
FG 497.00
Shooting p. 36 - 41
Details p. 77

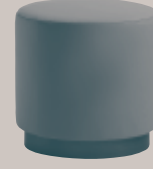


Elf H
FG 497.02
Shooting p. 36 - 41
Details p. 77
Also p. 22 - 23



Olimpia
FG 501.00
Shooting p. 14 - 16
Details p. 77

Pouuf >



Clubby Pouf
FG 493.01
Shooting p. 48 - 53
Details p. 76



Cocoon Pouf
FG 495.01
Shooting p. 32 - 35
Details p. 76

Armchairs >



Doa P
FG 464.00
Shooting p. 54 - 55
Details p. 76



Elf P
FG 497.01
Shooting p. 36 - 41
Details p. 77



Elf HP
FG 497.03
Shooting p. 36 - 41
Details p. 77



Olimpia P
FG 501.01
Shooting p. 14 - 16
Details p. 77

Tables >



Artù 160 / Artù 180
FG 494.00 / FG 494.01
Shooting p. 18 - 23
Details p. 78

Complements >



Viae Valet Stand
FG 484.50
Shooting p. 42 - 43
Details p. 79

Lounge Chairs >



Clubby
FG 493.00
Shooting p. 48 - 53
Details p. 76



Cocoon
FG 495.00
Shooting p. 32 - 35
Details p. 76



Riviera
FG 499.00
Shooting p. 44 - 47
Details p. 78

Sofas >



Square Sofa
FG 465.24 / 465.04
Shooting p. 24 - 25
Details p. 78



Winnie Sofa 200 / Winnie Sofa 240
FG 483.01 / FG 483.02
Shooting p. 26 - 31
Details p. 79

Also Fabrics/

→ La storica tradizione di rivestimenti in pelle e cuoio, che da sempre ha caratterizzato la produzione di Frag, viene affiancata da una nuova proposta di tessuti. Le linee di prodotti e collezioni si vestono di ricercati velluti, pattern classici e contemporanei e superfici tessili pensate appositamente per gli spazi pubblici, grazie alla collaborazione di alcuni tra i più noti brand specializzati in tessuti per il settore dell'arredo. La nuova proposta di rivestimenti di Frag nasce per rispondere alle diverse esigenze dell'arredo, in particolare, sulla scia di una sempre maggiore richiesta da parte del mercato contract. I tessuti scelti dall'azienda, infatti, riescono ad inserirsi perfettamente sia in eleganti ambienti domestici che all'interno di importanti spazi comuni. → A new line of fabrics is joining the longstanding tradition of upholstery in leather and saddle leather which has always characterised Frag's range of products. The furnishings and collections are upholstered in refined velvet, with classic and contemporary patterns and fabric surfaces designed specifically with public spaces in mind. This is the result of a collaboration between some of the most celebrated brands specialising in fabrics for the furniture sector. Frag's new range of upholstery was created to provide a solution to the range of demand for furniture, and specifically on the back of increased demand for contract furniture. The fabrics chosen by the company are equally suited to elegant domestic environments as they are to central public spaces.

Melange Nap / 54-951



Dione / 45-08

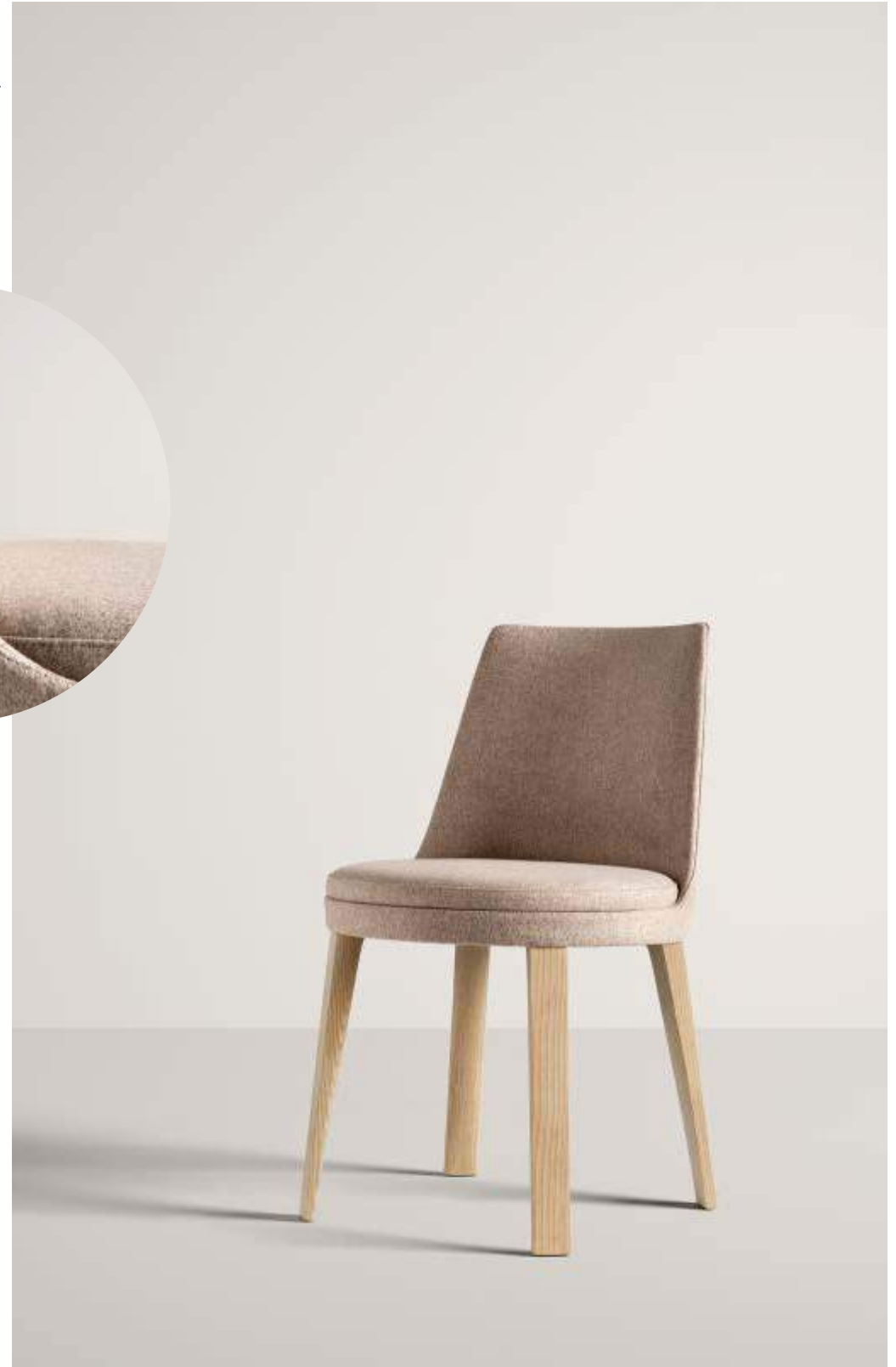
→ Sahrai Pouf / FG 471.01
→ Sahrai L / FG 471.00



008

Divina / 52-213

→ Ponza / FG 405.00



009

Urano /
42-004



→ Aileron / FG 334.00

010

Sole /
24-S400



→ Bella H / FG 320.00

011

The Collection II.





014

Model

design:
Dainellistudio

Olimpia,

→ è una seduta che unisce estetica e funzione, in un gioco in cui la struttura metallica sostiene e ricalca la silhouette di seduta e schienale senza quasi toccarla. La scocca è impreziosita da impunture capitonné confermando la personalità decorativa e contemporanea di Olimpia.

→ combines aesthetics and functionality, with a metal frame that supports and traces the outline of the seat and back rest almost without touching it. The body is embellished with capitonné stitching which gives it the signature decorative and contemporary Olimpia style.

015



→ Olimpia P / FG 501.01
→ Olimpia / FG 501.00

016



017



Model

design:
Michele di Fonzo

Artù,



→ archetipo del tavolo da pranzo rotondo, è un oggetto dalle forme importanti e dal carattere sontuoso, dedicato ai dining più lussuosi e alle sale riunione più ricercate. La base del tavolo, rivestita in morbida pelle e impreziosita da un basamento e da profili in ottone brunito, dichiara immediatamente lo statement di questo oggetto dalla forte personalità.

→ the archetypal round dining table, its impressive shape and distinguished appearance make it suitable for the most luxurious dining areas and elegant meeting rooms. The base of the table, upholstered in soft leather and enhanced by a burnished brass base and profiling, marks this out as a piece with a strong personality that makes an immediate statement.



→ Artù 180 / FG 494.01
→ Artù 160 / FG 494.00

020



021



→ Artù 180 / FG 494.01
→ Elf H / FG 497.02

022

023

Square,



→ Square Sofa mono-material / FG 465.24

→ vive di contrasti, di opposti che si completano. Il rigore del disegno di questo divano, fatto di linee nette e decise, convive con l'accogliente morbidezza dei cuscini. Il contrasto rivive anche nei materiali e nella possibilità di mixare cuoio, pelle e tessuti nelle due varianti mono e bi-materica. → is a creation of complementary contrast. The precision design of this sofa, rendered with clear, sharp lines, blends with the inviting softness of the cushions. The contrast is also found in the materials, with the option of leather, saddle leather and fabrics in either single or dual-fabric variations.



Model

design:
Mist-o

Winnie,

→ è un divano caratterizzato da forme generose e imbottiture che invitano al relax. La scocca rivestita in pelle o tessuto disegna seduta e schienale, curvandosi a formare una sorta di nido. Al suo interno un unico cuscino rivestito in pelle o tessuto curvato a formare una U, definisce uno spazio intimo, un rifugio, in cui sprofondare viziati dalla preziosa morbidezza del materiale. → is a sofa notable for its generous form and padding which invites relaxation. The shell is upholstered in leather or fabric, while the design of the seat and back curve to form a nest shape. Inside this is a single U-shaped cushion, upholstered in leather or fabric. Winnie is a refuge, a private space in which to nestle, surrounded by the comforting softness of the materials.

026

027



→ Winnie Sofa 200 / FG 483.01





030

031



Cocoon,

→ è una collezione composta da poltrona lounge con poggiatesta, fatta di forme avvolgenti, armoniche, equilibrate e da sapienti accostamenti materici: perfetto connubio tra formalismo estetico e comfort, testimonia una grande abilità nel mixare e lavorare materiali e rivestimenti differenti.

→ is a collection featuring a lounge chair with a footrest, combining enveloping, harmonious, balanced lines with skilfully-paired materials: a perfect marriage of aesthetic formalism and comfort, evidence of an ability to blend and work with different materials and upholsteries.



→ Cocoon / FG 495.00
→ Cocoon Pouf / FG 495.01

034

035



036

Model

design:
Gordon Guillaumier

Elf,



→ famiglia di sedie e poltroncine, mantiene un profilo rigoroso senza rinunciare al comfort, grazie alla morbida imbottitura e allo schienale flessibile, dando vita ad un oggetto fatto di nuove sinuosità dal gusto estremamente contemporaneo. → is a collection of chairs and armchairs with a clean-cut profile that doesn't compromise on comfort, thanks to the soft upholstery and flexible back, which produce a sinuous, curved item with a particularly contemporary flavour.

037

→ Elf H / FG 497.02
→ Elf HP / FG 497.03



→ Elf / FG 497.00
→ Elf P / FG 497.01



038



039



040



041



→ Elf HP / FG 497.03
→ Elf / FG 497.00



042

Model

design:
Analogia Project

Viae,



→ si ispira ai ciottoli delle antiche strade romane la cui forma liscia e levigata deriva dall'uso e dal tempo. Appendiabiti e svuotatasche al tempo stesso, **Viae** riesce ad unire funzionalità e vanità in un oggetto del desiderio dal carattere prezioso dedicato agli ambienti più intimi della casa.

→ is inspired by the cobblestones of ancient Roman roads, shaped and polished by time and wear. Combining a clothes stand and valet tray, **Viae** successfully marries functionality and design in a desirable, luxurious item suitable for the most intimate domestic environments.

043



044

Model

design:
Dainellistudio

Riviera,



→ è una lounge armchair in cui sono leggibili sia richiami modernisti, per l'utilizzo del tubolare metallico, sia un'impronta contemporanea e decorativa, per l'utilizzo della finitura ottone brunito graffiato e l'accostamento tra la pelle o tessuto dei cuscini ed il cuoio di seduta e schienale. → is a lounge chair which displays hints of modernism in its use of metallic tubing, while a contemporary, decorative influence is provided by the burnished brass finish and the combination of the leather-upholstered cushions and the saddle leather on the seat and back.

045



→ Riviera / FG 499.00

046



047



Model

design:
Christophe Pillet

Clubby,



→ è una famiglia composta da club armchair e pouf dalle linee tondeggianti, ispirati alle poltroncine dei fumoir dei circoli parigini. Le proporzioni e le forme di questa famiglia, infatti, la rendono particolarmente adatta agli spazi comuni e agli utilizzi più legati al mondo del contract. → a range consisting of a club armchair and pouf with rounded contours, inspired by the chairs found in Parisian fumoirs. The proportions and lines of this series make it ideal for public areas and the uses commonly requested by contract clients.

048

049



→ Clubby / FG 493.30
→ Clubby Pouf / FG 493.10



→ Clubby / FG 493.20



050

051





→ Clubby / FG 493.20 → Doni 62 / FG 485.01
→ Clubby Pouf / FG 493.10

052

053



054

Model

design:
Alessandro Dubini

Doa,



→ Doa P / FG 464.00
→ Doa / FG 464.01

→ si configura come la classica seduta con struttura in legno a vista, un arredo intramontabile in grado di valorizzare differenti ambienti domestici. La base e le gambe affusolate sostengono il cuscino di seduta e lo schienale, disegnando una silhouette armoniosa ed accogliente.

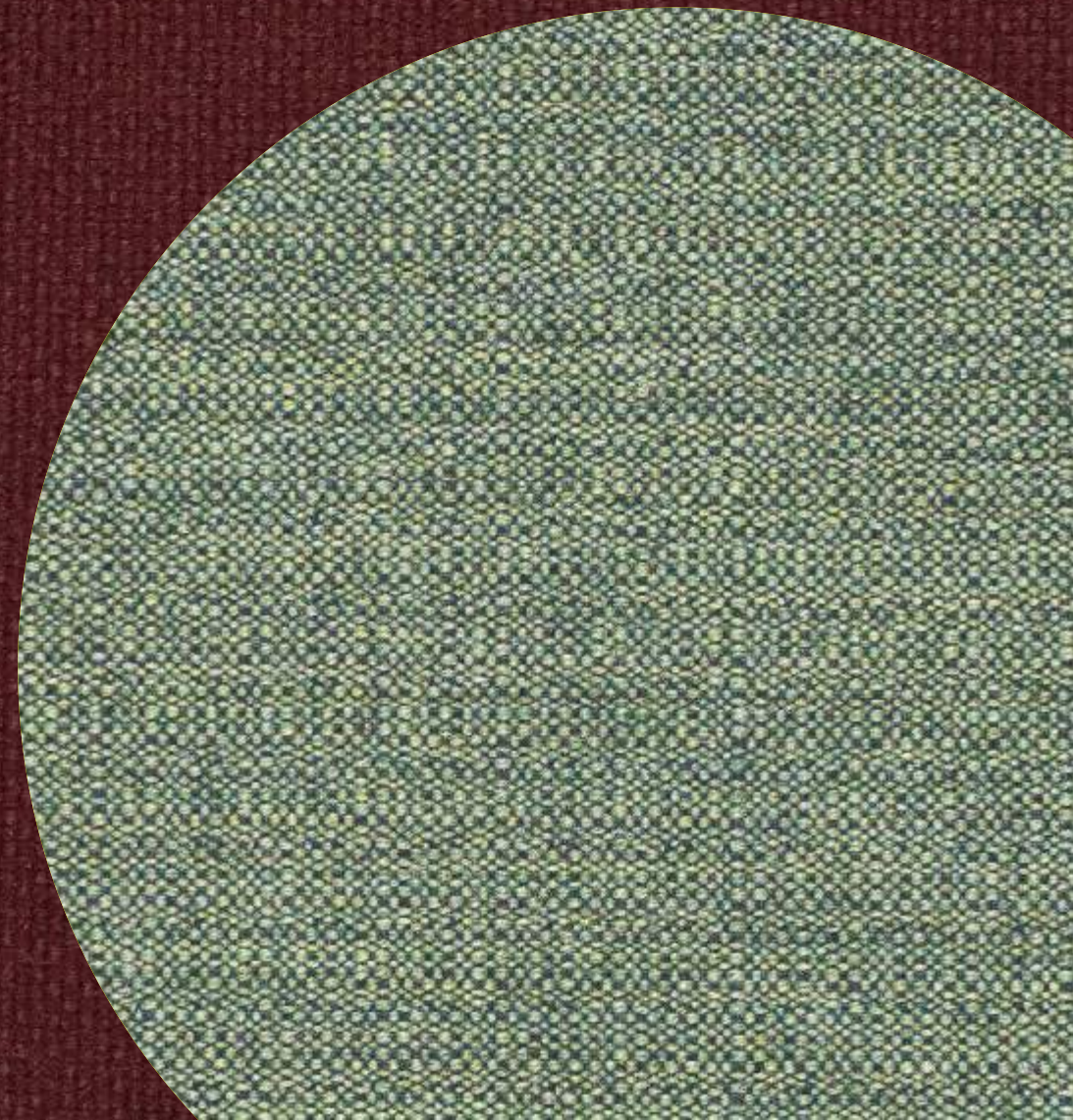
→ is a classic chair with a visible timber frame, a timeless piece that will enhance many different rooms of the house. The base and tapered walnut legs support the seat and back cushioning, creating a harmonious, welcoming silhouette.

055

New fabrics + finishings.



058



059

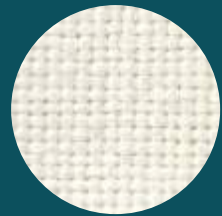
Collection News '19

New fabrics.

Fabric / Tessuto / 24 Sole



24-S422



24-S420



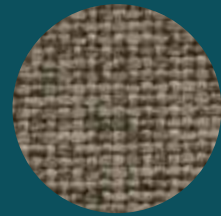
24-S444



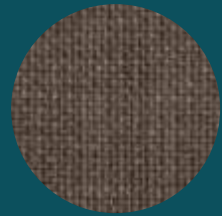
24-S401



24-S402



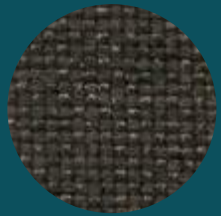
24-S441



24-S440



24-S416



24-S437



24-S407



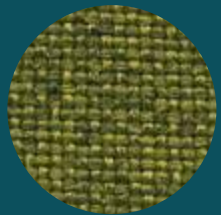
24-S409



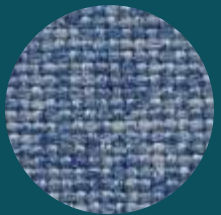
24-S007



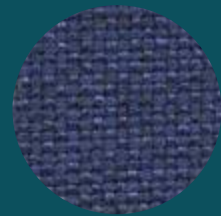
24-S022



24-S011



24-S414



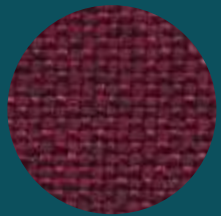
24-S434



24-S025



24-S436



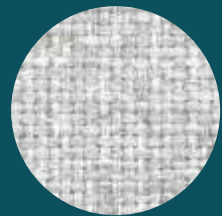
24-S016



24-S433



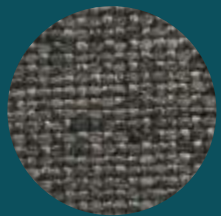
24-S020



24-S443



24-S400



24-S417

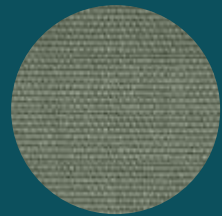


24-S418

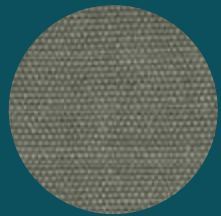
Fabric / Tessuto / 28 Marte



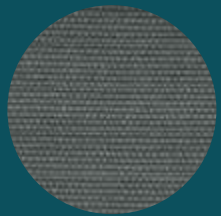
28-37



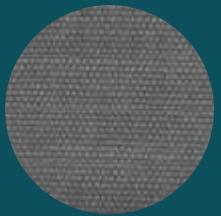
28-26



28-29



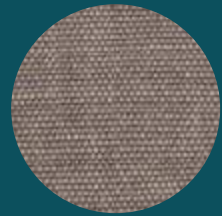
28-31



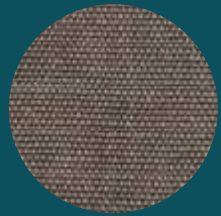
28-30



28-03



28-05



28-07



28-32



28-08



28-13



28-24



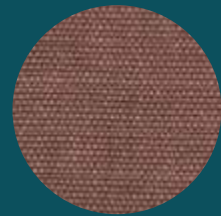
28-38



28-35



28-18



28-10



28-14

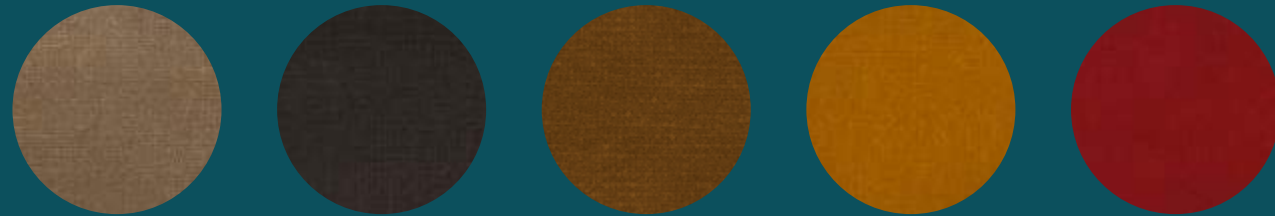


28-02

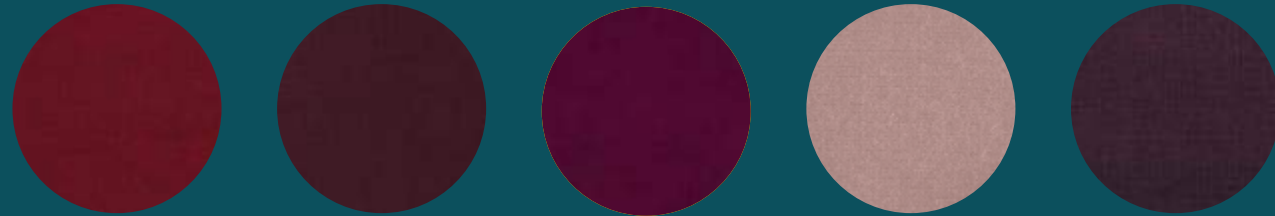
Collection News '19

New fabrics.

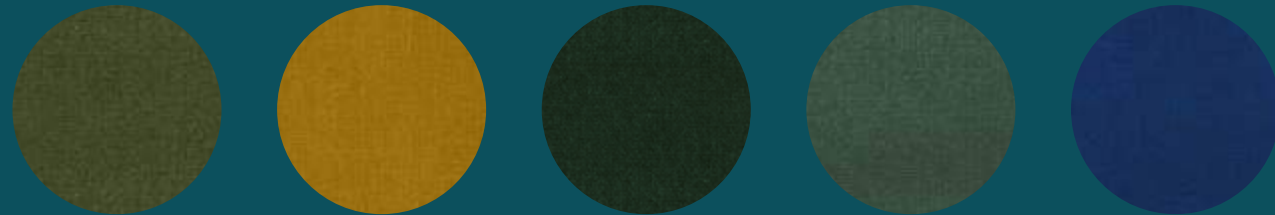
Fabric / Tessuto / 38 Venere



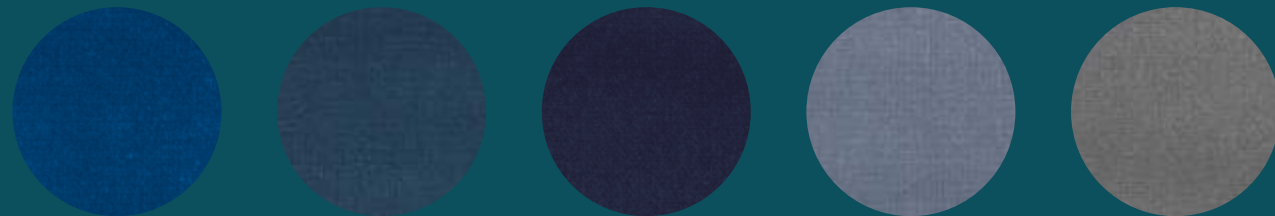
38-4744 38-8612 38-8450 38-1688 38-3247



38-3590 38-3804 38-3833 38-4512 38-9402



38-7307 38-7515 38-6726 38-6381 38-5436



38-5243 38-5604 38-5632 38-5098 38-0104



38-0546 38-0504 38-0518 38-0702 38-0802

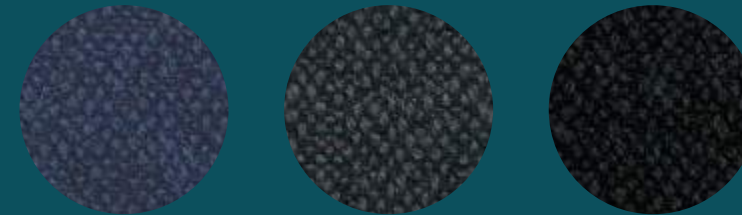
Fabric / Tessuto / 41 Teti



41-700 41-111 41-100 41-400 41-900



41-406 41-405 41-300 41-304 41-500



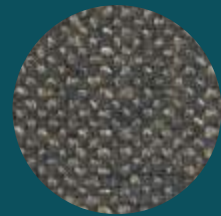
41-701 41-601 41-200

Fabric / Tessuto / 42 Urano

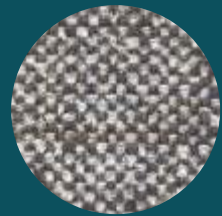


42-011 42-001 42-004 42-008 42-009

Collection News '19



42-014



42-012



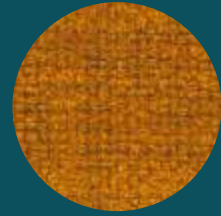
42-010



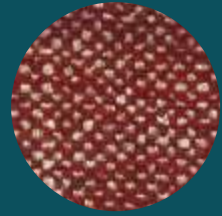
42-015



42-021



42-028

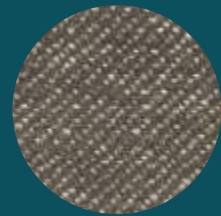


42-016



42-031

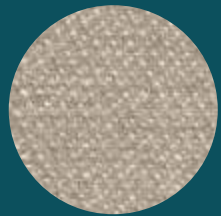
Fabric / Tessuto / 43 Eris



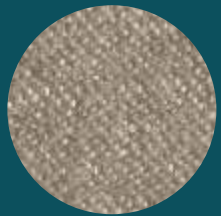
43-601



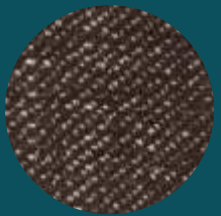
43-100



43-400



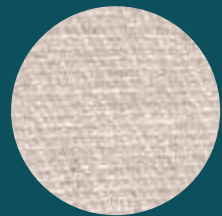
43-406



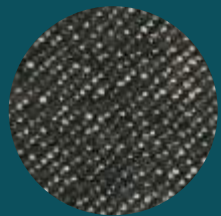
43-405



43-701



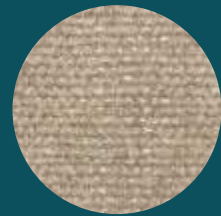
43-600



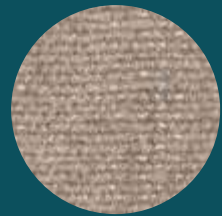
43-200

New fabrics.

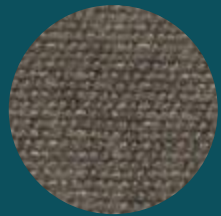
Fabric / Tessuto / 44 Ariel



44-102



44-400



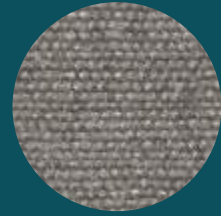
44-406



44-600



44-405



44-601



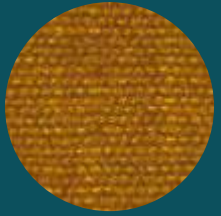
44-603



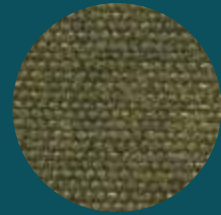
44-301



44-001



44-500

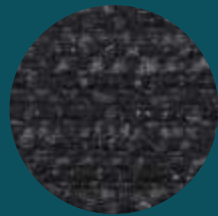


44-806



44-707

Fabric / Tessuto / 45 Dione



45-09



45-04



45-20



45-08



45-10



45-22

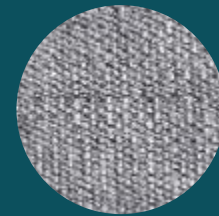


45-19



45-14

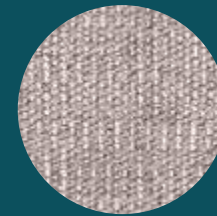
Fabric / Tessuto / 51 Maple



51-172



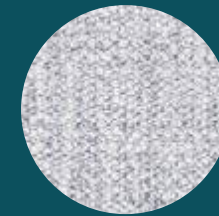
51-212



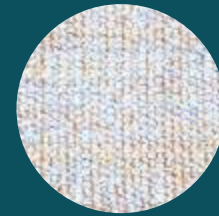
51-342



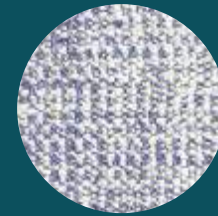
51-542



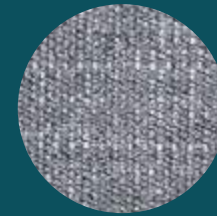
51-722



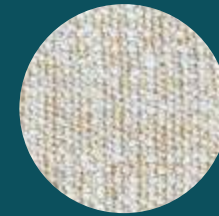
51-732



51-742

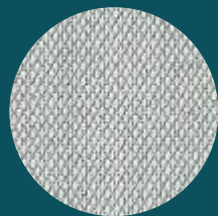


51-762

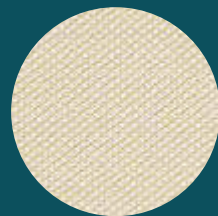


51-832

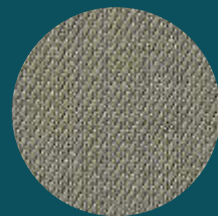
Fabric / Tessuto / 50 Steelcut Trio 3



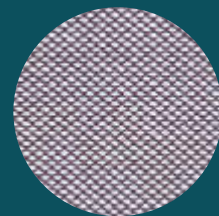
50-113



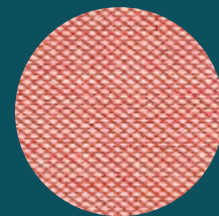
50-236



50-253



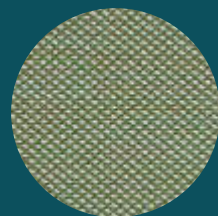
50-336



50-526



50-906



50-946

Fabric / Tessuto / 52 Divina



52-193



52-203



52-213



52-343



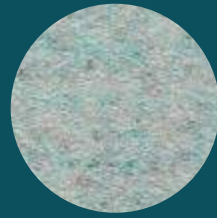
52-453



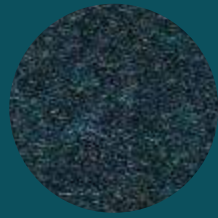
52-673



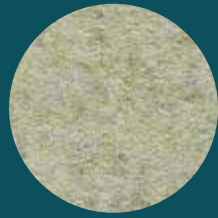
52-713



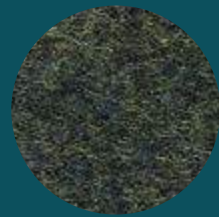
52-813



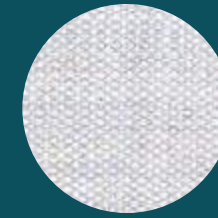
52-873



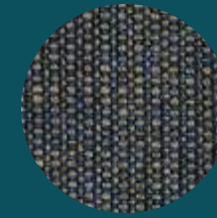
52-913



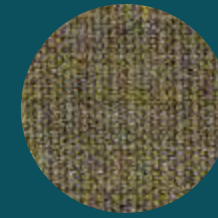
52-973



53-716

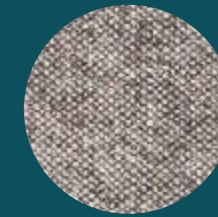


53-854

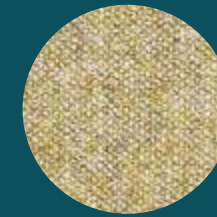


53-964

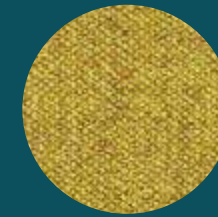
Fabric / Tessuto / 54 Melange Nap



54-241



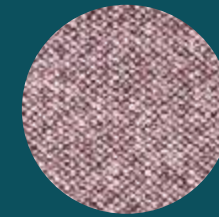
54-411



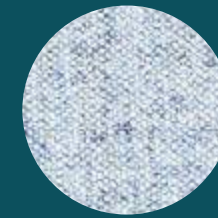
54-441



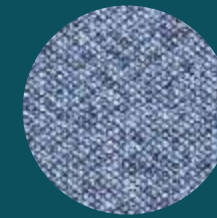
54-521



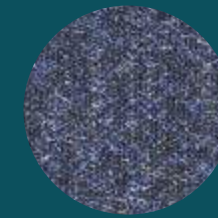
54-651



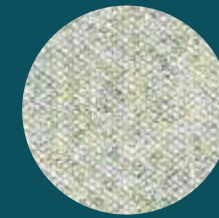
54-711



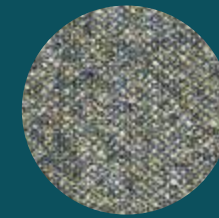
54-751



54-791

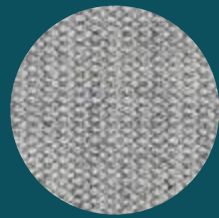


54-911

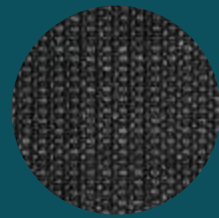


54-951

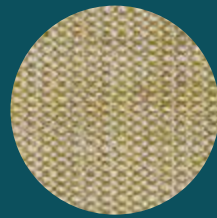
Fabric / Tessuto / 53 Canvas



53-124



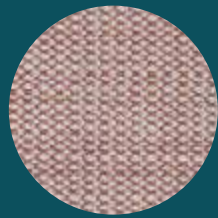
53-174



53-414



53-566

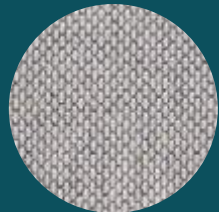


53-614

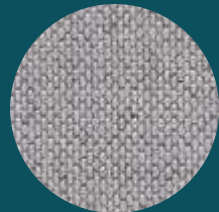
Collection News '19

New fabrics.

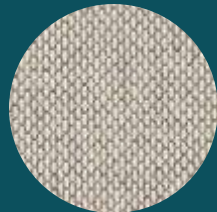
Fabric / Tessuto / 55 Rewool



55-128



55-158



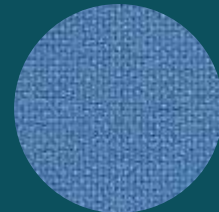
55-218



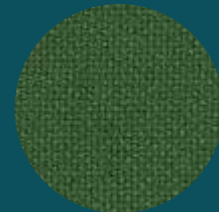
55-358



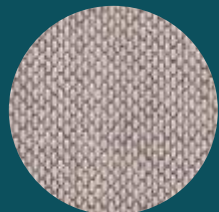
55-378



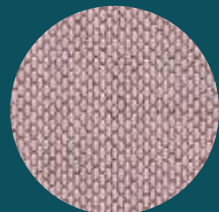
56-723



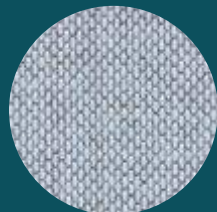
56-944



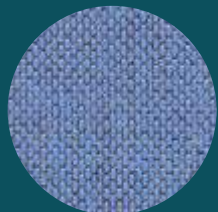
55-628



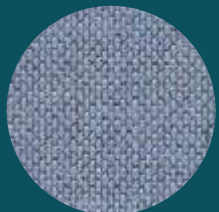
55-648



55-718

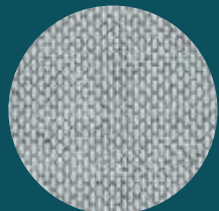


55-758



55-768

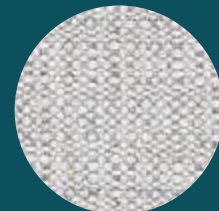
Fabric / Tessuto / 57 Foss



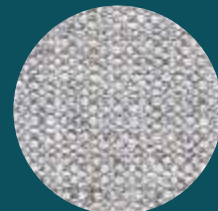
55-868



57-102



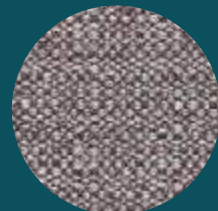
57-112



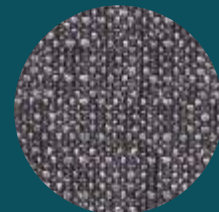
57-142



57-212



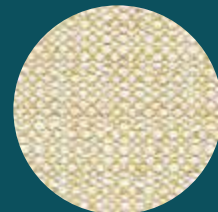
57-372



57-382



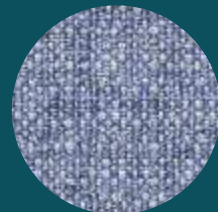
57-392



57-412

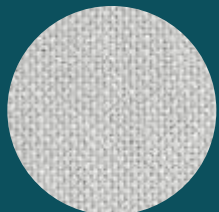


57-612

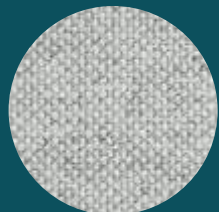


57-722

Fabric / Tessuto / 56 Hallingdal



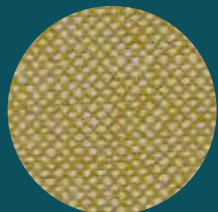
56-103



56-110



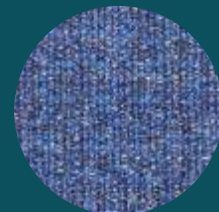
56-376



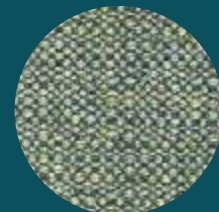
56-407



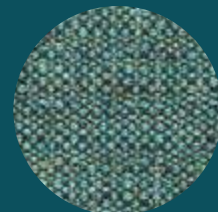
56-694



57-752



57-932



57-972

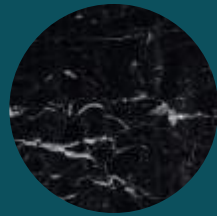
Marble / Marmo



M01



M02



M03



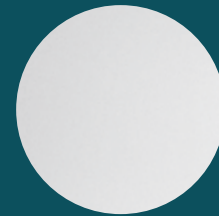
M04

New finishings.

Steel / Acciaio



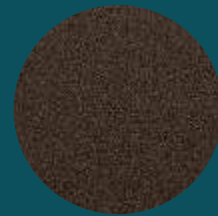
F11



F12



F15



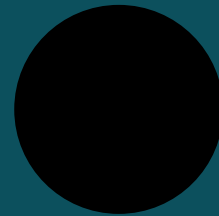
F20



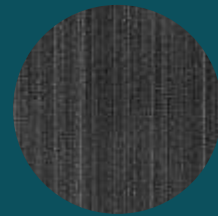
F22



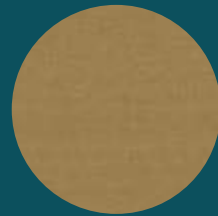
F23



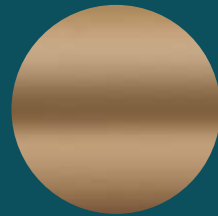
F24



F29



F33



F36



F40

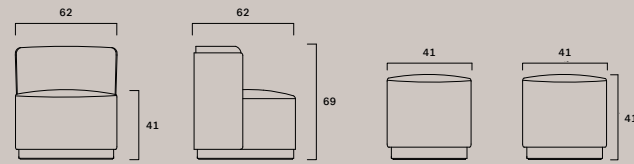
Technical Sheet.

Chairs →

Clubby

Famiglia di sedute completamente imbottite con basamento in metallo finitura ottone spazzolato. Poltrona lounge con basamento girevole, rivestita in pelle o tessuto, con guscio esterno rivestito in pelle, cuoio o tessuto. Pouf rivestito in pelle o tessuto.

Range of fully padded chairs with base finished in brushed brass. Lounge chair with a swivelling base, upholstered in leather or fabric, with an external shell upholstered in leather, saddle leather or fabric. Pouf upholstered in leather or fabric.



Clubby
Swivel Armchair
FG 493.00
FG 493.20
FG 493.30

Clubby Pouf
FG 493.10

Cocoon

Poltrona lounge e pouf imbottiti e rivestiti in pelle o tessuto, piedini in massello di noce. Lounge con scocca in anima di alluminio rivestita in cuoio.

Lounge chair and pouf, padded and upholstered in leather or fabric, solid walnut feet. Lounge with aluminium-core frame upholstered in saddle leather.



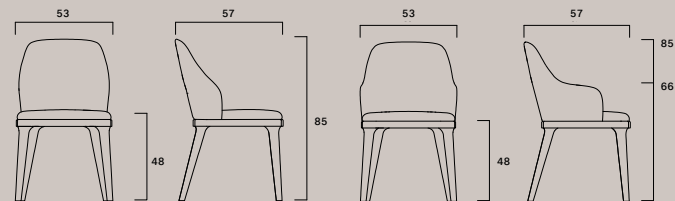
Cocoon
Armchair
FG 495.00

Cocoon Pouf
FG 495.01

Doa

Seduta con scocca in multistrato, imbottita in poliuretano espanso ignifugo e rivestita in pelle. Gambe e struttura in legno di frassino. Disponibile con o senza braccioli.

Seat with multilayer body, padded with flame-retardant polyurethane foam and upholstered in leather. Legs and frame in ash wood. Available with or without armrests.



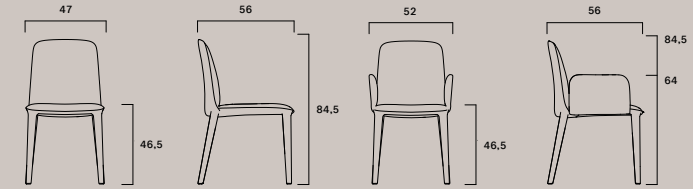
Doa
Side chair
FG 464.01

Doa P
Armchair
FG 464.00

Elf

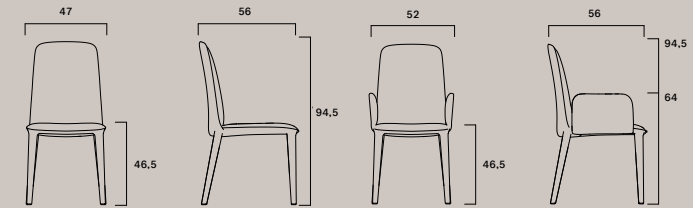
Famiglia di sedute imbottite in poliuretano espanso, interamente rivestite in pelle o tessuto. Struttura in acciaio con schienale flessibile. Disponibile con schienale alto o basso, con e senza braccioli.

Range of chairs padded with polyurethane foam and fully upholstered in leather or fabric. Steel frame with flexible back. Available with high or low back, with or without armrests.



Elf
Side chair
FG 497.00

Elf P
Armchair
FG 497.01



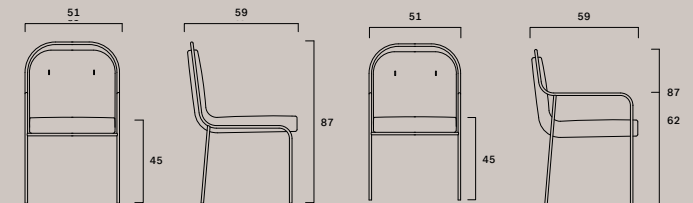
Elf H
Side chair
FG 497.02

Elf HP
Armchair
FG 497.03

Olimpia

Famiglie di sedute con struttura in tubolare d'acciaio verniciato o cromato e scocca imbottita e rivestita in pelle o tessuto. Disponibile con e senza braccioli. Schienale con dettaglio bottone metallico.

Range of chairs with a tubular frame in lacquered steel or chrome and padded body upholstered in leather or fabric. Available with or without armrests. Back with metallic button details.



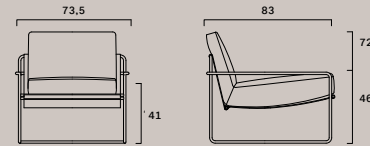
Olimpia
Side chair
FG 501.00

Olimpia P
Armchair
FG 501.01

Riviera

Poltrona lounge con struttura in tubolare d'acciaio verniciato o cromato, seduta e schienale in cuoio. Cuscini sfoderabili, imbottiti, rivestiti in pelle o tessuto.

Lounge chair with tubular frame in lacquered steel or chrome, seat and back in saddle leather. Removable cushions, padded and upholstered in leather or fabric.



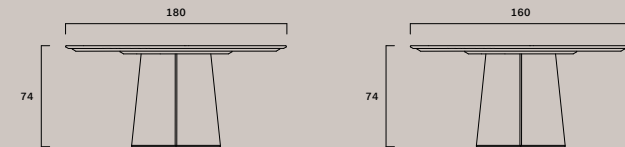
Riviera
Armchair
FG 499.00

Tables →

Artù

Tavolo tondo con base rivestita in pelle e dettagli in metallo con finitura in ottone spazzolato. Top in marmo. Su richiesta, vassoio girevole in marmo.

A round table with a base covered in leather and metal details with a brushed brass finish. Marble top. Marble lazy Susan available upon request.



Artù 180
Table
FG 494.01

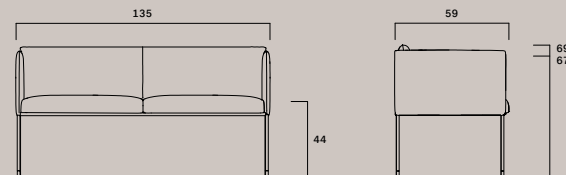
Artù 160
Table
FG 494.00

Sofa →

Square Sofa

Famiglia di sedute con scocca leggermente imbottita e rivestita in cuoio, pelle o tessuto. Cuscini in poliuretano sagomato, rivestiti in pelle o tessuto. Gambe in tubo di acciaio verniciato, puntali in alluminio spazzolato.

Range of chairs with lightly padded body, upholstered in leather, saddle leather or fabric. Moulded polyurethane seat cushions, upholstered in leather or fabric. Lacquered tubular steel legs, brushed aluminium ferrules.

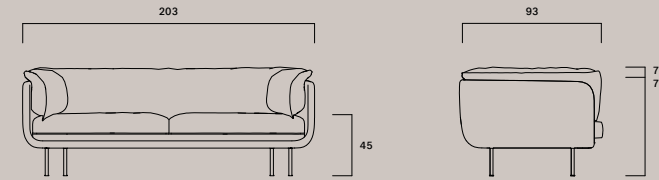


Square Sofa
Sofa
FG 465.24 / FG 465.04

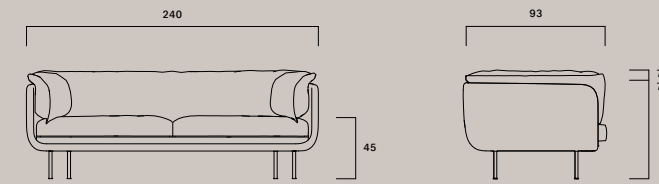
Winnie Sofa

Collezione di imbottiti con struttura in metallo leggermente imbottita e rivestita in pelle o tessuto. Cuscini di seduta e schienale imbottiti in piuma ecologica e rivestiti in pelle o tessuto. Piedini in ottone spazzolato o brunito.

Collection of upholstered furnishings with lightly padded metal frame covered in leather or fabric. Seat and back cushions filled with eco-friendly down and upholstered in leather or fabric. Feet in brushed or burnished brass.



Winnie Sofa 200
Sofa
FG 483.01



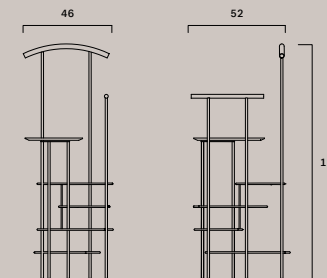
Winnie Sofa 240
Sofa
FG 483.02

Complements →

Viae

Servomuto con struttura in tondino metallico, finitura cromo lucido o verniciato. Servomuto con ripiano e appendiabiti rivestiti in cuoio.

Valet stand with a metal rod frame in polished chrome or lacquered steel. Valet stand with shelf and clothes stand upholstered in saddle leather.



Viae Valet Stand
Valet Stand
FG 484.50

Colophon./Acknowledgements.

Company info

Frag Srl
Via dei Boschi 2
33040 Pradamano
Udine Italia
Tel. +39 0432 671375
frag@frag.it
www.frag.it

Credits

Art Direction
R+W

Concept and design
Samuele Savio /
Choice—Studio

Lay-out
Samuela Naticchi /
Choice—Studio

Project coordination
Federica di Fonzo

Photos Photographer
Gionata Xerra Photo

Assistant
Leonardo Duggento
Photo Assistant
Pierpaolo Mazzola

Stylist
Simona Silenzi Studio

Stylist Assistant
Gaia Marchesini
Alessandra Chiarelli

Photo retouching
Malvina Monteggia

Color separation
Luce srl

Printed in Italy
Grafiche Filacorda
March 2019

Thanks to

72 Steps Atelier
Cattelani & Smith
CC Tapis
Nude Glass
Oluce

Frag reserves the right to
introduce any changes
to its own models without
prior notice.
Color tones may vary from
one dye lot to another.

© 2019 by Frag srl
All rights reserved

