

Portfolio 10_2017

INFO 002

OFFICE 004

SPA 024

RESIDENCIAL 028

HOSPITALITY 048

COMMERCIAL 050

RES . A STORY ABOUT DESIGN



RES designs and produces doors and systems since 1962, when Enrico Santambrogio establishes and settles the company in a productive and constantly improving contest, which knew how to bring the made in Italy style all over the world: Brianza.

With its headquarter in Seregno, RES shows its collection of inside doors everywhere in Italy, succeeding in establishing itself in the peninsula and then spreading even over the boundaries, conquering the Russian and American trades. The distribution of products takes place through high level furniture systems retailers, as well as specialists in the field of design doors.

RES suppliers are settled in New York for the United States and Canada, in Benelux, Hong Kong, Ciprus, Dubai, India and Turkey.

During the years, RES has realized important design projects carrying the collections of doors and systems inside the prestigious offices Estée Lauder Cosmetics in New York, in the housing complex Palais Liegi in Rome, in the Belstaff location of Mogliano Veneto, in the Hotel Conservatorium in Amsterdam and in the offices of the luxury fashion brand Giada in China.



Moreover, many products earned RES important awards, among which:

- . special mention "Young e Design 1995" for the system Sidus;
- . special mention "Young e Design 2003" for the led door Luna Light;
- . special mention "Young e Design 2005" for the system Twin;
- . recommendation "Idot 2006" for the led door Luna Light.

The goal for the next years is to bring RES products inside other international trades, particularly in Kazakhstan, Azerbaijan, Romania, Ghana and Mexico.

The developing of RES image and goals are the results of the creative direction of Massimo Cavana, RES art director since the very beginning.

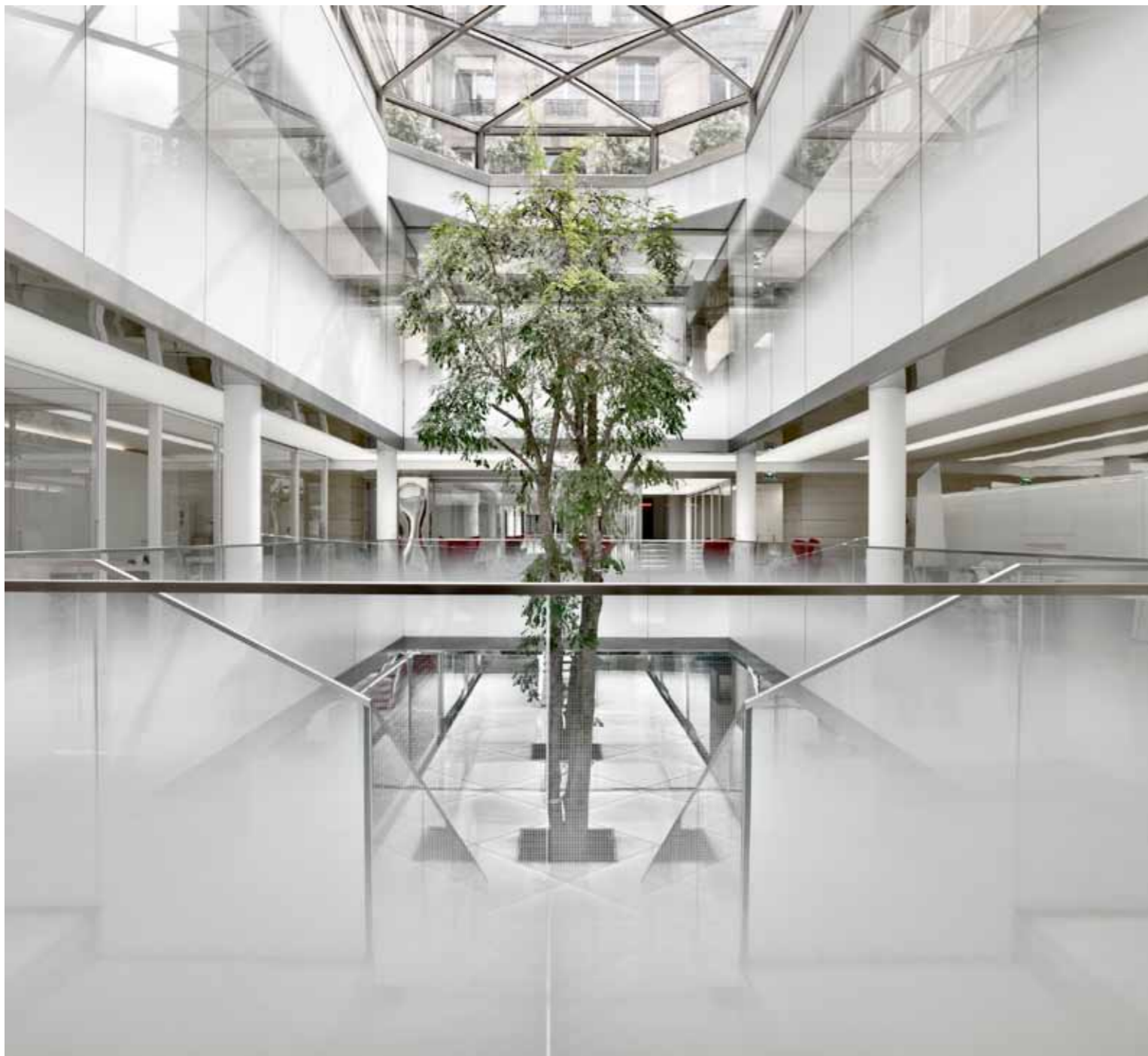


LUXURY OFFICES

PARIS . FRANCE



Three floors full of natural light from the glass roof in the most chic square of Paris.





The project is based on Luna sliding doors, the thinnest frame of Res production. Aluminium and transparent glass are the finishings used for these offices.





FASHION COMPANY HEADQUARTERS SHENZHEN . CHINA

The creation of the headquarters of the fashion brand Giada in the centre of Shenzhen.





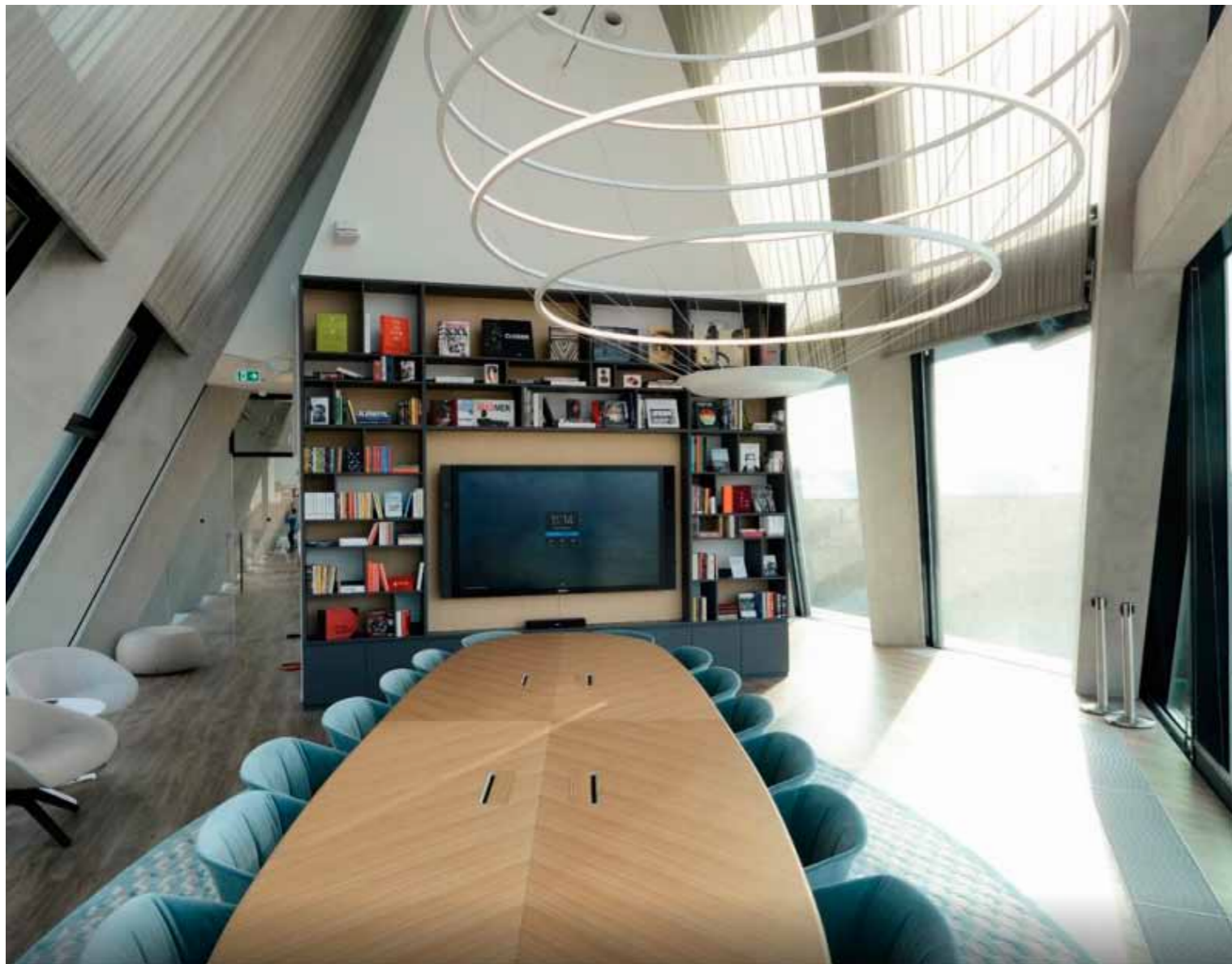


Levia doors are used in this project for the office rooms, using mainly different glass finishings.





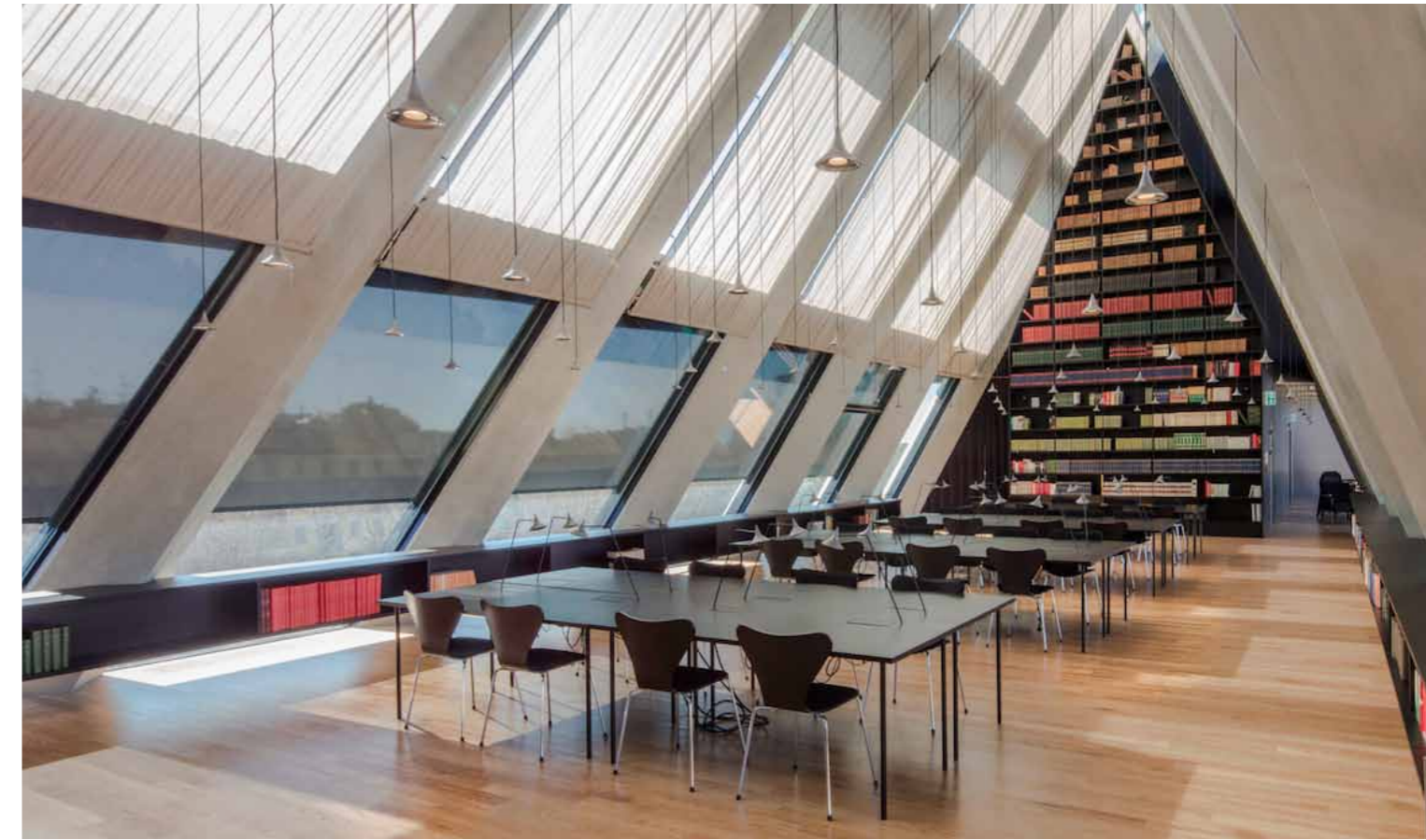
MICROSOFT HEADQUARTERS MILAN . ITALY



The new headquarters of Microsoft Italy, has opened its doors in the beautiful district of Porta Volta in Milan. Partition with integrated wing doors are the Res products in this important architectural project.



FELTRINELLI HEADQUARTERS MILAN . ITALY



The architectural project was designed by the international architectural studio Herzog & de Meuron. Res, within this important project of the new Milan, has participated in the implementation of some elements of furniture, like partitions with integrated wing doors.



The new building where the Giangiacomo Feltrinelli Foundation moved its headquarters, opened in December 2016, it is located in Porta Volta area in the Municipality of Milan. The new premises are located in about 2,700 square meters on five floors and is flanked by a Municipality building, which will have its administrative center.





ARCHITECTS OFFICE BERGAMO . ITALY

A lab office where work and agency meet in a dreamlike atmosphere: a place where everything can happen, be imagined and then realized.







The glass walls are made of Stopsol, particularly bright and reflective: in the operational area has allowed the multiplication of the infinity of light reflections.



FASHION COMPANY HEADQUARTERS

MOGLIANO VENETO . ITALY

An industrial space in the Venetian countryside turned into offices by using Luna doors in Brill finishing.





LAFODIA SPA HOTEL
LOPUD ISLAND . CROATIA



The latest generation of Spa with the most sophisticated elements for the ultimate relaxation.





Levia, Arc and Miss are products used in this special project.





UPSCALE PENTHOUSE
BAKU . AZERBAIJAN



In the most iconic building in the centre of the square overlooking the Black Sea.



In this project a wide range of Res products: Levia, Luna, Wave, 10.8 and Zero.Zero.

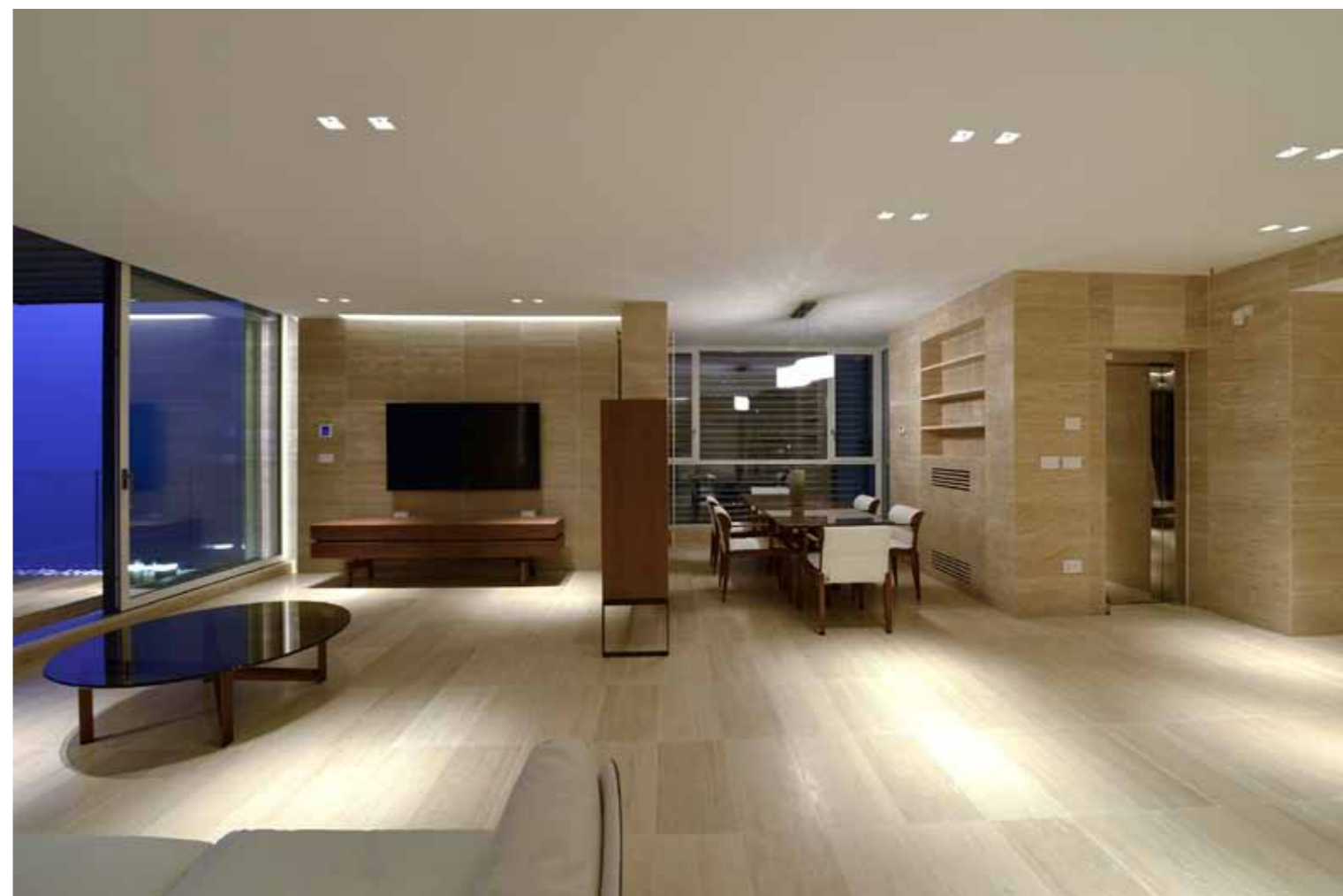


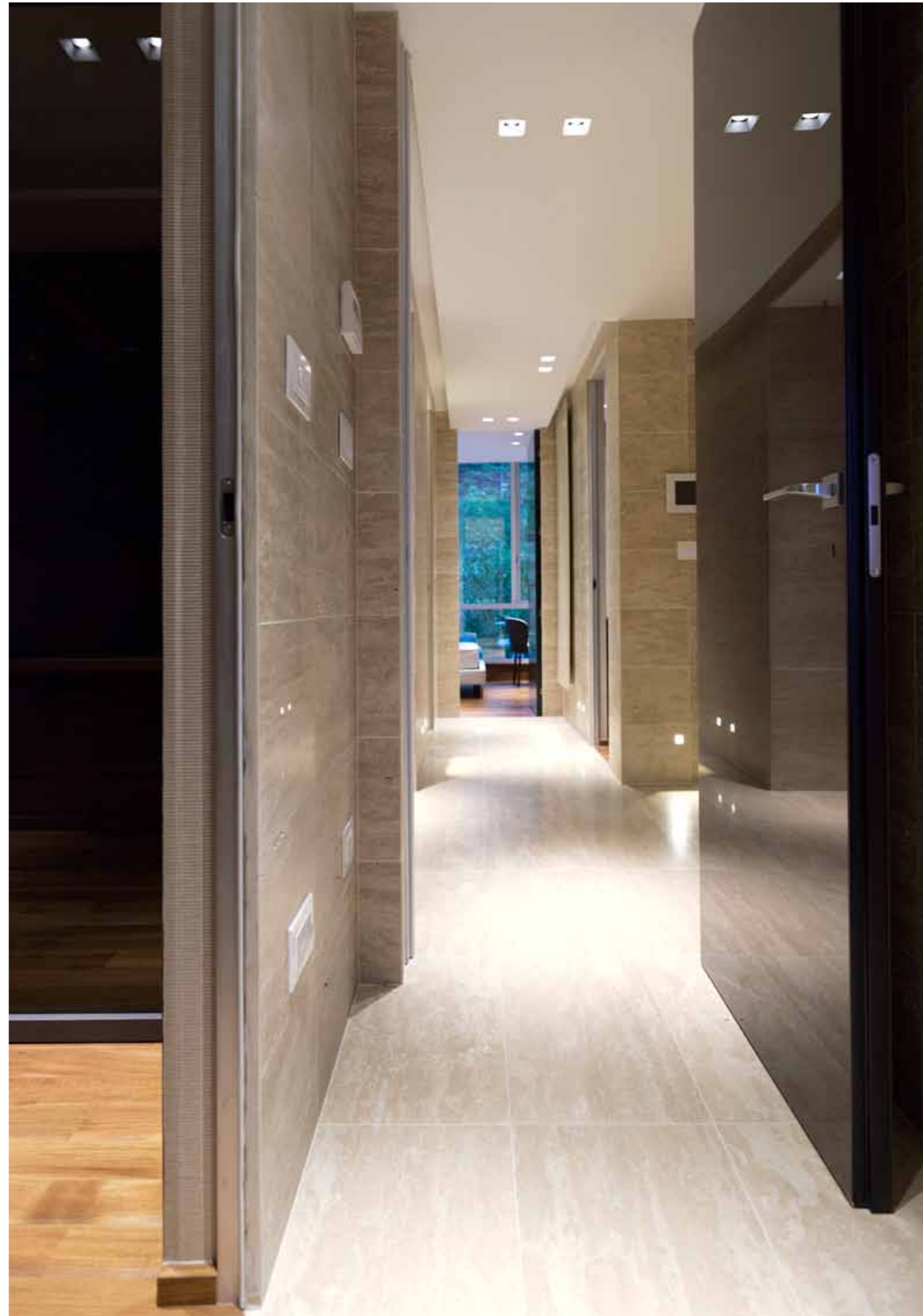


PRIVATE VILLA
SHENZHEN . CHINA

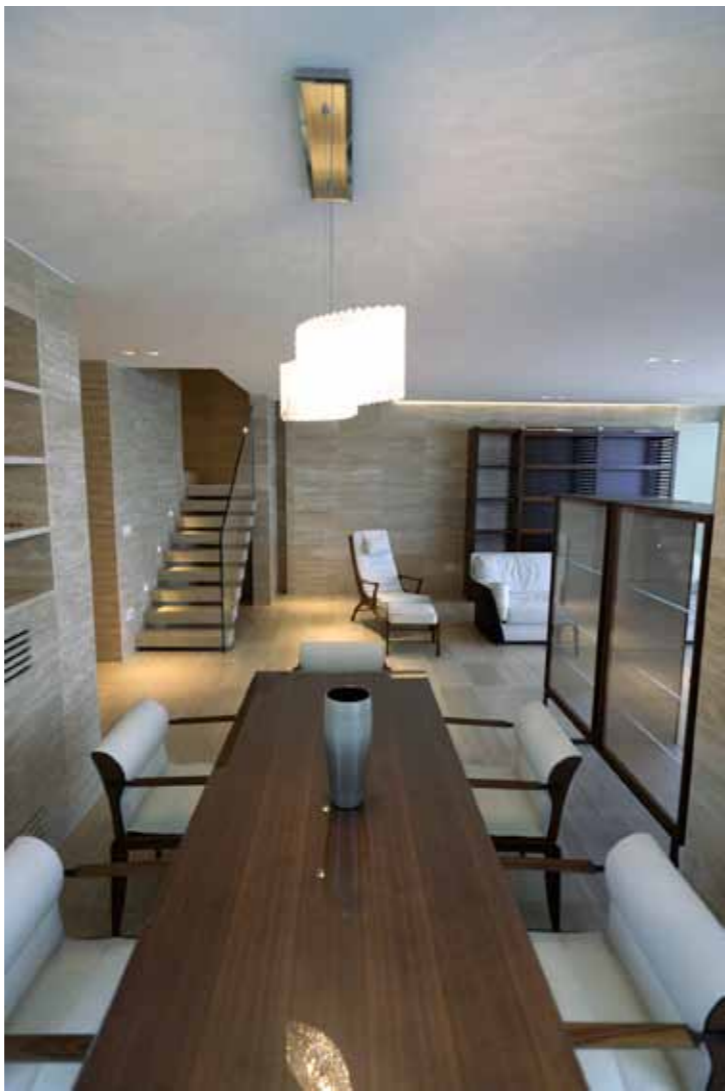


These villas in China are a breath-taking break from the frenzy of Shenzhen: a residential complex perfectly integrated into the cliff overlooking the sea.





Warm-hearted environments have been created, twisting the space available by creating new paths and new views. Res products have blended perfectly with the philosophy and concept of these villas.





The most recent restoration project in the center of Marina Bay with apartments, offices, hotels. Products used: Levia, Luna and Sidus.

SOUTH BEACH RESIDENCE SINGAPORE





ARIA, SOLARIA, SOLEA TOWERS
MILAN . ITALY



The 3 towers are one of the most important architectural icons of the Porta Nuova Area in Milan.

PRIVATE APARTMENT MONTECARLO . MONACO



Prestigious apartment in the heart of Montecarlo, facing the sea. Corridor fully realized with a boiserie in natural oak finish, which incorporates bath doors and technical cabinets. Automatic door with touch controls and sun stop glass. Lacquered "rasomuro" doors complete the supply.

PRIVATE APARTMENT BRATISLAVA . SLOVAKIA

Elegant apartment in the center of Bratislava, where the use of sliding doors Luna has given the opportunity to create bright and open spaces.





PRIVATE APARTMENT
BRATISLAVA . SLOVAKIA



The sliding doors Luna at the center of this project where the open spaces are the protagonists. The fine finishes make the design of this apartment even more interesting.

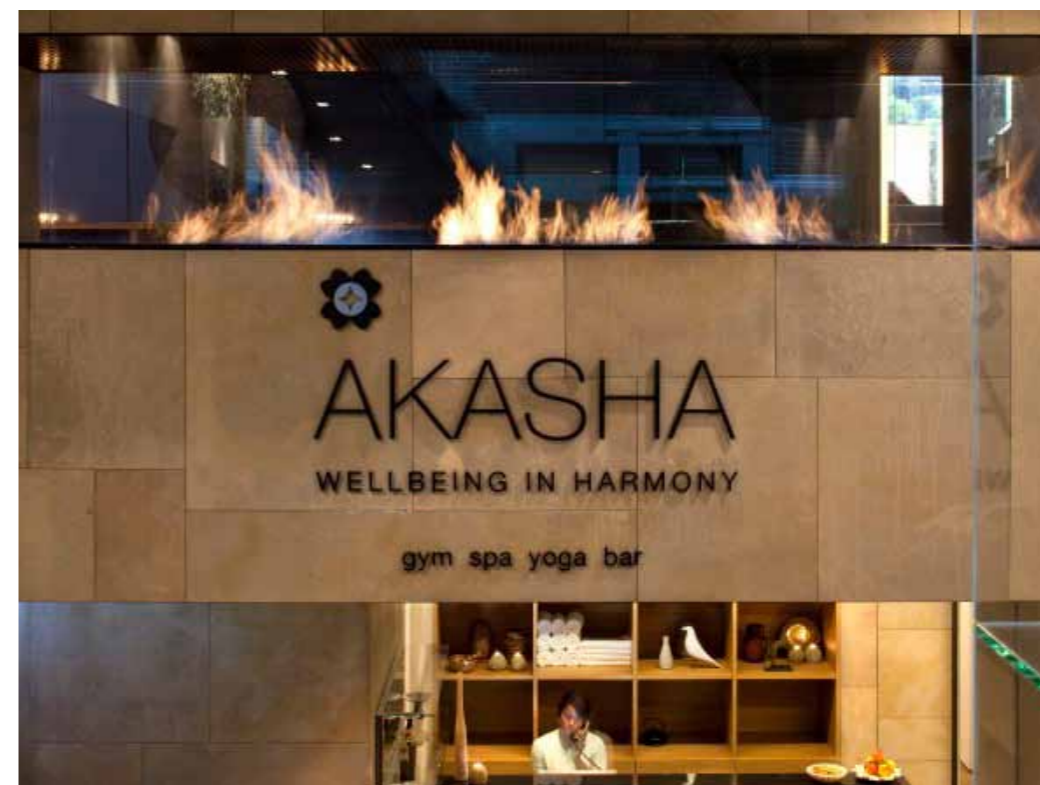
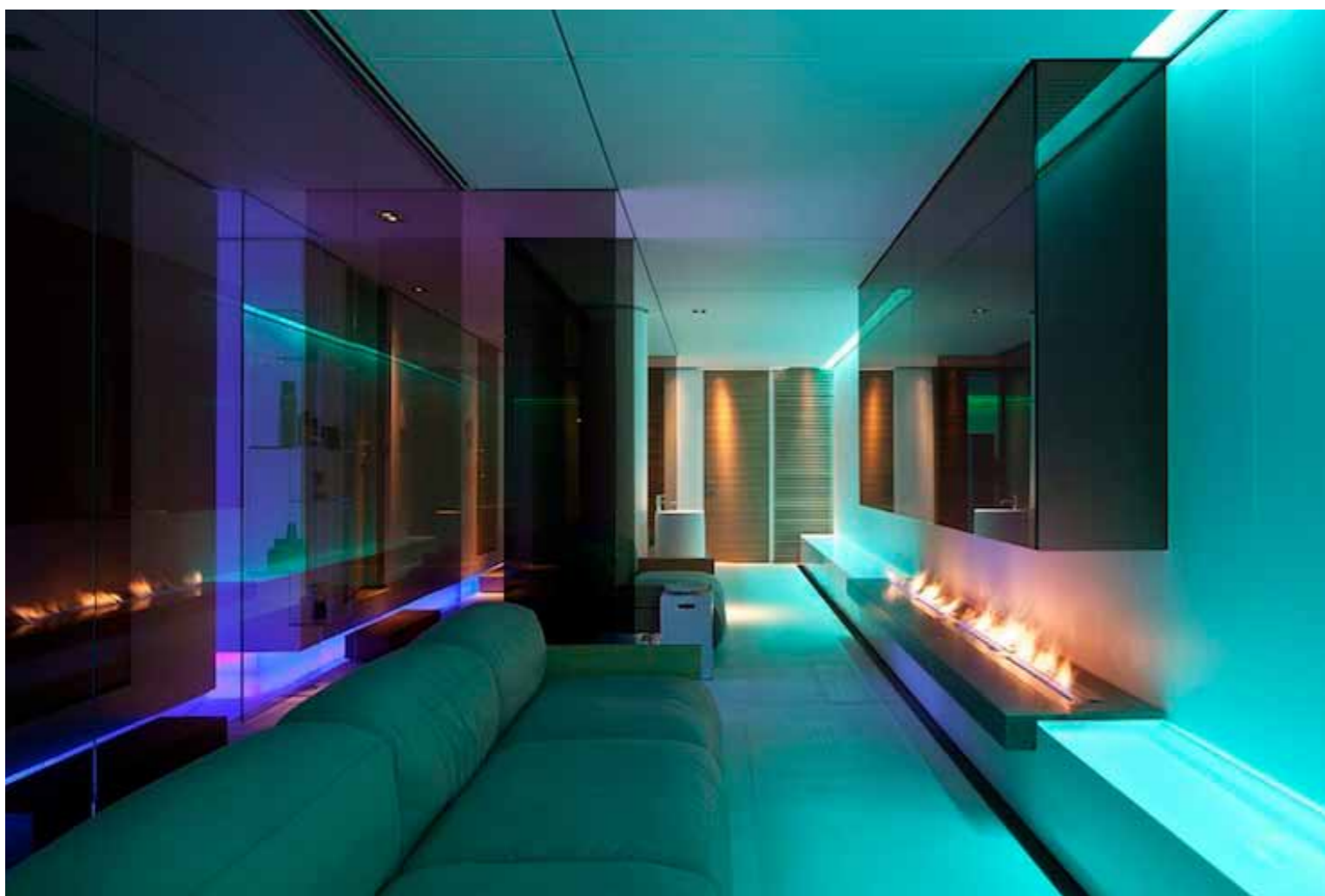




CONSERVATORIUM HOTEL
AMSTERDAM . NETHERLANDS



Restoration of the Conservatorium Hotel in Amsterdam, a neo-gothic building, designed by Piero Lissoni. Levia and Miss are the doors used at the Akasha Spa.





LEICA FLAGSHIP STORE MILAN . ITALY



The flagship store for connoisseurs of professional cameras overlooking the most beautiful square in the centre of Milan.



Doors and systems . Italia 20831 , Seregno (Milano)
via Cassina Savina, 49 . T +39 0362 238620 . F +39 0362 327860
www.resitalia.it . e-mail: info@resitalia.it

AD massimocavana.com

Pages 08.13 ph. Nicolò PiuZZi
Pages 18.23 ph. arch. Giacomo Albo
Pages 34.37 ph. Giuseppe Taramelli
Pages 42.43 ph. Sonia Soldati

Release 02 10-2017

