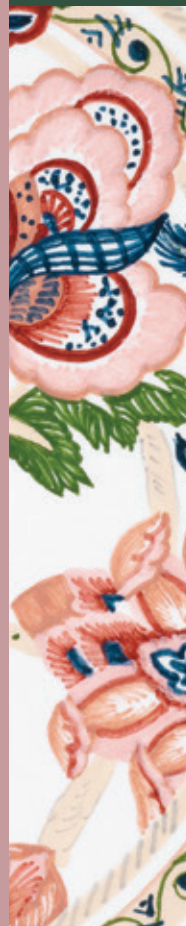




K Y M Δ



sambonet®



EN

Kyma

In Greek, “Kyma” means wave, but it is also the name of a basic architectural element with its origin in ancient Greece, one that became well known in the great works of the following eras. This smooth, curvilinear or moulded band is the birth, development and life of Kyma: an original collection of furnishing designed by **Serena Confalonieri**.

In Kyma, a sine wave – represented by a stainless steel tube – runs along the outside of the objects, gently tracing their profiles. The broad waves give continuity and movement to the clear lines of the inner geometry in this series of accessories based on hexagonal, octagonal, square and rectangular shapes. The lightness and the dynamism of the decorative sign also characterize the vibrant surfaces of the showplate and the candelabra.

For this project, Sambonet chose next-generation finishes in copper and gold shades – the product of constant technological research developed in the application of PVD to steel – to electropolishing and silvering techniques for steel as well.

From design to production, Kyma finds its raison d'être entirely in Italy, taking advantage of artisan know-how and perfectly uniting it with the company's industrial expertise.



Collection

**SQUARE**

26 x 26 cm H 8,5 cm

Finishing

STAINLESS STEEL HI-TECH
SILVERPLATED
PVD GOLD
PVD COPPER

**HEXAGON**

31 x 27 cm H 8,5 cm

Finishing

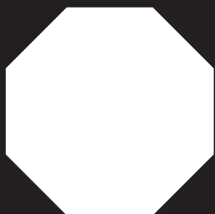
STAINLESS STEEL HI-TECH
SILVERPLATED
PVD GOLD
PVD COPPER

**RECTANGLE**

41 x 26 cm H 8,5 cm

Finishing

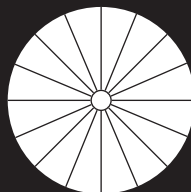
STAINLESS STEEL HI-TECH
SILVERPLATED
PVD GOLD
PVD COPPER

**OCTAGON**

37 x 37 cm H 8,5 cm

Finishing

STAINLESS STEEL HI TECH
SILVERPLATED
PVD GOLD
PVD COPPER

**SHOW PLATE**

Ø 31 cm H 1,6 cm

Finishing

STAINLESS STEEL
SILVERPLATED
PVD GOLD
PVD COPPER

**CANDELABRA 7 LIGHTS**

Ø 25 cm H 30 cm

Finishing

STAINLESS STEEL HI TECH
SILVERPLATED
PVD GOLD
PVD COPPER







Design by



With a degree in Interior Design from the Milan Polytechnic Institute, **Serena Confalonieri** (Vimercate [MB] 1980) is working with important architecture and design studios in Milan, Barcelona and Berlin and has collaborated with the Polytechnic's department of interior design. She is an independent designer and art director who lives and works in Milan, where she collaborates with Italian and international companies. Her work lies in the nexus of graphics and product design: a careful study of surfaces is always evident in her projects.

Kyma meets the tradition of Deruta



The exclusive special edition of artistic Deruta ceramics, interpreted from the expressive language of the fashion designer Gianni Cinti - is added to Kyma's all-italian good taste and stylistic research.

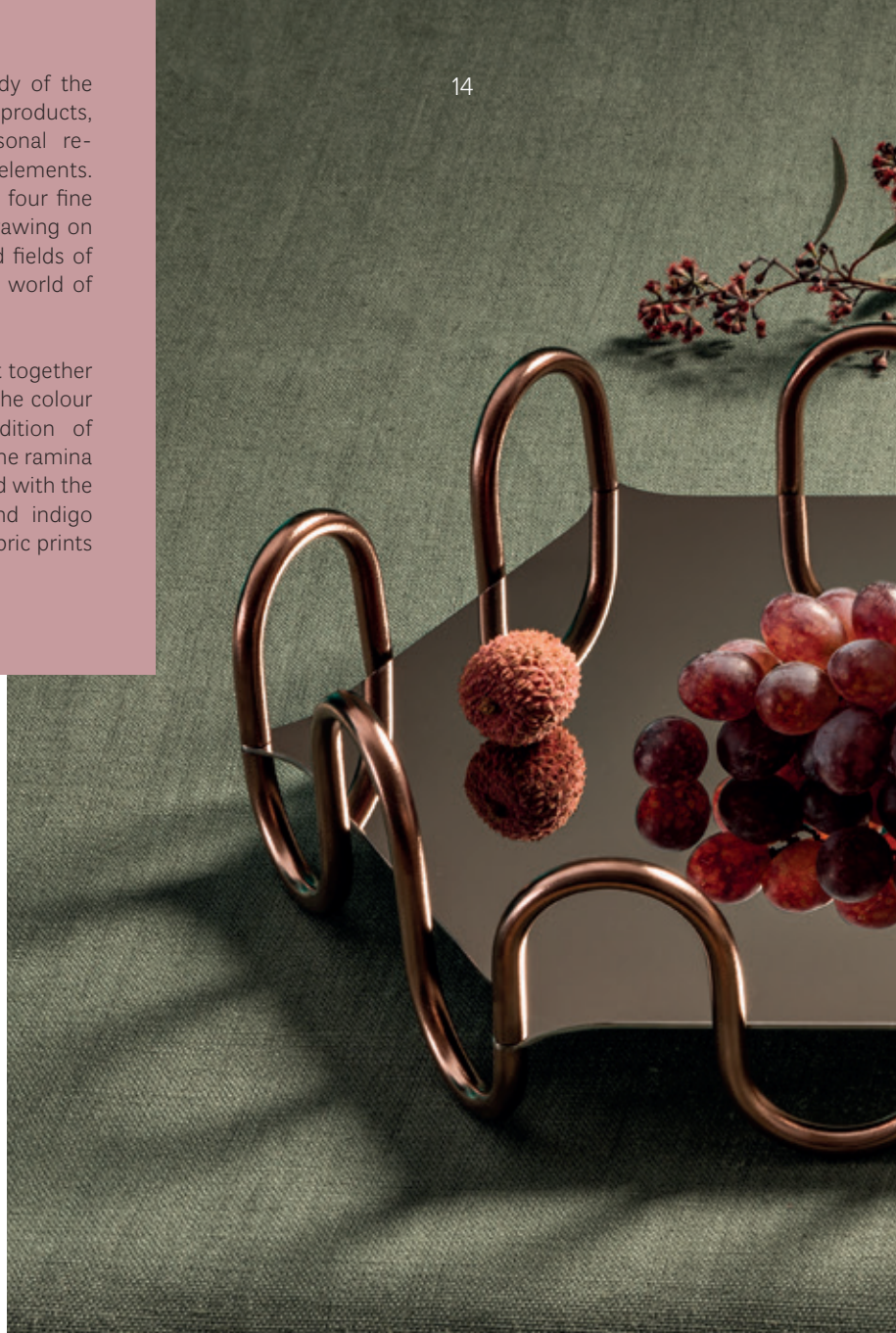
This project sprang from a fascinating dialogue between an object of industrial design – featuring the strength and continuity of contemporary graphic design – and the excellence of artisan ceramics and its ancient artistic legacy, clearly recognisable by its traditional Renaissance decoration. Working side by side with **MOD – Maioliche Originali Deruta** – Sambonet designed an object that perfectly fits art and fashion.

In the class of authentic ceramic products, these plates are the result of the abilities of MOD expert artisans that, thanks to an experience of more than 50 years, faithfully reproduces the local painting traditions into the richness of decoration. This was able to transform the visual and emotional impact of Kyma.



Through an elegant philological study of the oldest designs of Renaissance Deruta products, **Gianni Cinti** offers a totally personal re-reading of these original free-form elements. This was the context in which these four fine decorative objects were designed, drawing on elements from different cultures and fields of endeavour, including the fascinating world of fabrics.

The fashion designer skilfully brought together prints of nature and geometry with the colour tones typical of the ceramic tradition of Umbria. The nuance of manganese, the ramina green and peacock blue are combined with the sophisticated golden, pink, mint and indigo tones of antique Chinese silks and fabric prints for fashion.



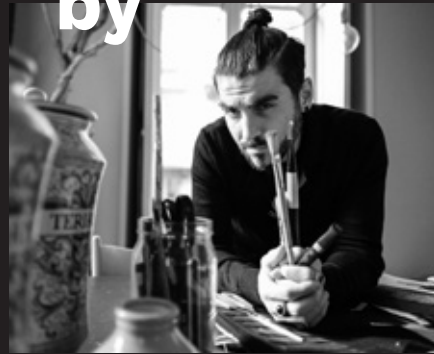




Decor by

“His creativity
is an open space
that he arranges
from time to time”

GF Ferrè



After his early artistic training in Deruta, **Gianni Cinti** (Marsciano, 1979) specialised in graphics and design at the Istituto Superiore per le Industrie Artistiche in Urbino.

He has worked with some of the most famous brands in Italian and international fashion like Alberta Ferretti and Marithè and François Girbaud, even working with Gianfranco Ferré as a member of the creative staff of the Maison. Besides teaching at Istituto Europeo di Design di Milano, he collaborates with prominent international figures at his Fashion Design Studio in Turin. He is considered one of the most interesting emerging designers, especially in Shanghai, due to his creative production, which ranges from fashion to designer ceramics, from graphics to textiles.

Ph. Davide Bonaiti

credits

STYLIST

Alessandra Salaris, Studio Salaris

PHOTO

Gionata Xerra

ART DIRECTION

Paola Longoni

THANKS TO

Draga Obradovic

Pietro Russo

Nahoor

Baxter

Mohebban

WWW.SAMBONET.IT

XA9694 © 02/2017 - ARCTURUS GROUP

