

Studio Tecnico Pacini & Cappellini

Sedia o poltroncina con struttura in massello di frassino, scocca curvata rivestita in pelle, ecopelle o tessuto della collezione. Finiture disponibili: WG wengé, NC noce, TB tabacco, TN tinto nero, laccato opaco poro aperto.
 Chair or armchair with structure in solid ash, curved shell covered in leather, eco-leather or fabric of the collection.. Available finishings: WG wengé, NC walnut, TB tobacco, TN stained black, open pore matt lacquered.

chair or armchair
 cod.5437
 cod. 5437.1



cod.5437 mis.cm. 52 x 55 x h. 84
 cod.5437.1 mis.cm. 56 x 57 x h. 84

LEGNI WOODS



TN
tinto nero
stained black



NC
frassino tinto noce
ash stained walnut



TB
frassino tinto tabacco
ash stained tobacco



WG
frassino o noce
canaletto tinto wengé
ash or canaletto
walnut stained wengé

LACCATO OPACO PORO APERTO OPEN PORE MATT LACQUERED



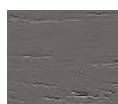
L21
bianco
white



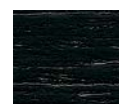
L29
madreperla
pearl



L23
cappuccino
cappuccino colour



L25
grigio fumo
smoke grey



L22
nero
black



L24
rosso
red