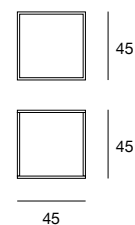


Tavolino di servizio con struttura in metallo cromato. Piani placcati frassino, in vetro verniciato (extra chiaro bianco, nero o moka) o in marmo lucido. Finiture disponibili: WG wengé, NC noce, TB tabacco, laccato opaco poro aperto. Serving coffee table with structure in chrome-plated metal. Tops veneered in ash, in lacquered glass (extra light white, black or moka) or in polished marble. Available finishings: WG wengé, NC walnut, TB tobacco, open pore matt lacquered.

coffee table  
cod.5451



45

LEGNI  
WOODS



NC  
frassino tinto noce  
ash stained walnut



TB  
frassino tinto tabacco  
ash stained tobacco



WG  
frassino tinto wengé  
ash stained wengé

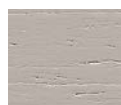
LACCATO OPACO PORO APERTO  
OPEN PORE MATT LACQUERED



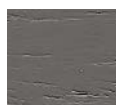
L21  
bianco  
white



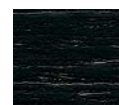
L29  
madreperla  
pearl



L23  
cappuccino  
cappuccino colour



L25  
grigio fumo  
smoke grey



L22  
nero  
black



L24  
rosso  
red

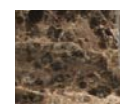
MARMI  
MARBLE



BC  
marmo bianco  
carrara lucido  
polished white  
carrara marble



NM  
marmo nero  
marquinia lucido  
polished black  
marquinia marble



EM  
marmo emperador  
dark lucido  
polished dark  
emperador marble